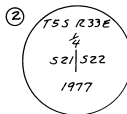
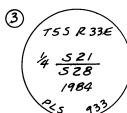


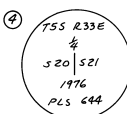
1/4 CORNER TO SECTIONS 16 & 21, T.5S., R.33E.
 FOUND 2" GALV. IRON PIPE WITH 2 1/2" BRASS CAP, MKD. AS SHOWN,
 20" ABOVE GROUND, IN A STONE MOUND, FROM WHICH:
 36" PINE, OPEN FACE WITH SCRIBES "1/4 S" VISIBLE, BEARS
 S 45° E, 9.9 FT. TO FACE.
 26" PINE STUMP, SCRIBES "BT" VISIBLE ON ROTTED FACE,
 BEARS N 18° W, 66.5 FT.
 28" PINE, OPEN DOUBLE BLADE WITH SCRIBES "T55 R 33E 1/4
 S 1/4 BT" BEARS N 13° W, 67.9 FT.



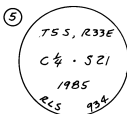
1/4 CORNER TO SECTIONS 21 & 22, T.5S., R.33E.
 FOUND 2" GALV. IRON PIPE WITH 3 1/2" BLM. BRASS CAP, MKD. AS
 SHOWN, FROM WHICH:
 14" LARCH SNAG, HAS BEEN CHOPPED OPEN, SCRIBE "S" VISIBLE,
 BEARS N 39° W, 35 LKS.
 7" PINE, OPEN FACE WITH SCRIBES "1/4 S 21 BT" VISIBLE, POOR
 CONDITION, BEARS N 39° W, 51 LKS.



1/4 CORNER TO SECTIONS 21 & 28, T.5S., R.33E.
 FOUND 2" GALV. IRON PIPE WITH 2 1/2" BRASS CAP MKD. AS SHOWN,
 WITH ORIGINAL STONE LYING ALONGSIDE, FROM WHICH:
 26" PINE STUMP, VISIBLE SCRIBES, BEARS N 10° W, 19 LKS.
 12" FIR SNAG, HEALED BLAZES, BEARS S 54° E, 13 LKS.
 18" FIR, SCRIBES "1/4 S 21 BT" VISIBLE, BEARS N 32° W, 51.6 FT.
 10" FIR, SCRIBES "1/4 S 28 BT" VISIBLE, BEARS S 17° E, 25.1 FT.



1/4 CORNER TO SECTIONS 20 & 21, T.5S., R.33E.
 FOUND 2" GALV. IRON PIPE WITH 2 1/2" BRASS CAP, MKD. AS SHOWN,
 IN A MOUND OF STONE AT FENCE CORNER, FROM WHICH:
 26" PINE SNAG, OPEN FACE WITH SCRIBES "T55 R 33E 1/4 S 21 BT"
 BEARS N 34° E, 81.4 FT.
 12" PINE, PARTIAL SCRIBES "1/4 S" VISIBLE, BEARS S 67° W, 71 LKS.



CENTER 1/4 CORNER OF SECTION 21, T.5S., R.33E
 AT POINT OF INTERSECTION OF E-W CENTERLINE AND N-S
 CENTERLINE I SET A 2" X 30" ALUMINUM PIPE WITH 2 1/2" ALUMINUM
 CAP, MKD. AS SHOWN, 26" IN GROUND, IN A STONE MOUND.
 I BLAZED AND SCRIBED 2 NEW BEARING TREES AS FOLLOWS:
 8" LARCH, SCRIBED "C 1/4 S 21 BT" BEARS S 30° W, 47.7 FT.
 8" FIR, SCRIBED "C 1/4 S 21 BT" BEARS N 83° W, 27.3 FT.

NOTE: FROM THE ABOVE CENTER 1/4 CORNER SET BY ME I FOUND 2" GALV. IRON
 PIPE WITH 2 1/2" BRASS CAP MKD. "T55 R 33E, C 1/4 S 21, 1984, PLS 933" BEARS
 S 78° 39' 40" E, 23.73 FEET.

PURPOSE OF SURVEY:

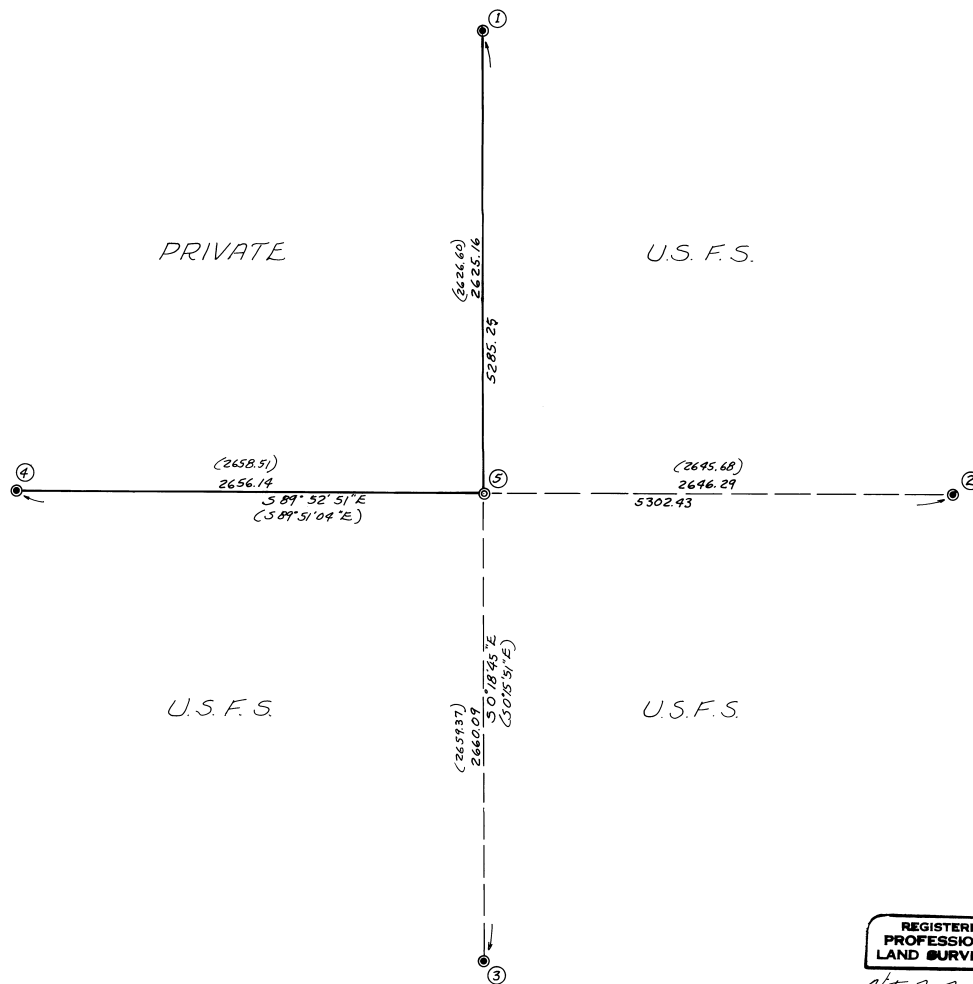
THE PURPOSE OF THIS SURVEY IS TO SUBDIVIDE SECTION 21 AND RESET
 THE CENTER 1/4 CORNER AT THE CORRECT LOCATION, AND TO RESET THE
 POSTS MARKING THE FOREST BOUNDARY TO CONFORM TO THAT BOUNDARY.

HISTORY:

THE ORIGINAL G.L.O. SURVEY OF THE EXTERIOR OF SECTION 21 WAS
 PERFORMED BY GEORGE PERDISH UNDER HIS CONTRACT NO. 430 IN
 1882. THE NORTH AND WEST 1/4 CORNERS WERE REMONUMENTED BY PLS
 NO. 644 IN 1976. THE EAST 1/4 CORNER WAS REMONUMENTED BY BLM IN
 1977. THE SOUTH 1/4 CORNER WAS REMONUMENTED BY PLS NO. 933
 IN 1984. THE CENTER 1/4 CORNER WAS SET BY PLS NO. 933 BY SURVEY
 IN 1984. MY SURVEY ESTABLISHES THE CENTER 1/4 CORNER AT A
 DIFFERENT LOCATION AS NOTED ABOVE.

METHOD OF SURVEY:

I RAN A CLOSED RANDOM TRAVERSE TO ESTABLISH THE LOCATION OF
 THE FOUR 1/4 CORNERS AND FOUR CONTROL TO SET THE CENTER 1/4 CORNER
 AND POST THE LINES, USING A TOPCON GTS100 THEODOLITE WITH BUILT-
 IN DISTANCE METER. MY TRAVERSE CLOSED WITH A PRECISION RATIO OF
 1: 13,000. I DID A SERIES OF SOLAR OBSERVATIONS NEAR THE SOUTH
 1/4 CORNER TO ESTABLISH MY BASIS OF BEARINGS, USING THE LOCAL HOUR
 ANGLE METHOD.



LEGEND

- FOUND MONUMENTED CORNER, USED FOR CONTROL
- SET 2" X 30" ALUMINUM PIPE WITH 2 1/2" ALUMINUM CAP AT CENTER 1/4 CORNER OF SEC. 21 BY SURVEY.
- BOUNDARY OF FOREST SERVICE LAND, POSTED WITH 6 FT. STEEL POSTS AND SIGNS 54-2
- () BRACKETS INDICATE RECORD PER 1894 KRUMBEIN SURVEY

SURVEYOR'S CERTIFICATE:

I, VICTOR M. MCLIND, A REGISTERED LAND SURVEYOR
 IN THE STATE OF OREGON, HEREBY CERTIFY THAT THIS PLAT
 AND THE NOTES HEREOF OR ATTACHED, CORRECTLY REPRESENT
 A SURVEY PERFORMED BY ME DURING AUGUST AND SEPTEMBER,
 1985 FOR THE UMATILLA NATIONAL FOREST IN ACCORDANCE
 WITH THE STATUTES OF THE STATE OF OREGON AND THE
 ARTICLES OF MY CONTRACT. *Victor M. McLind*
 VICTOR M. MCLIND, ORE. PLS # 934

PLAT OF SURVEY

LOCATED IN
 SEC. 21, T.5S., R.33E., W.M., UMATILLA COUNTY, OREGON

FOR
 U.S. FOREST SERVICE, UMATILLA NATIONAL FOREST

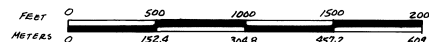
SURVEYED BY
 VICTOR M. MCLIND, MILTON-FREEWATER, OREGON

AUGUST - SEPTEMBER, 1985

BEARINGS TRUE, BASED ON SOLAR OBSERVATION ON 9-12-85

SCALE: 1" = 500'

MAGNETIC DECLINATION: 19° 30' E.



REGISTERED
 PROFESSIONAL
 LAND SURVEYOR

Victor M. McLind

OREGON
 JULY 17, 1979
 VICTOR M. MCLIND
 934

RECEIVED BY
 Umatilla County Surveyor
 Date 9-17-85
 Rec'd By *[Signature]*
 No. 85-118-B