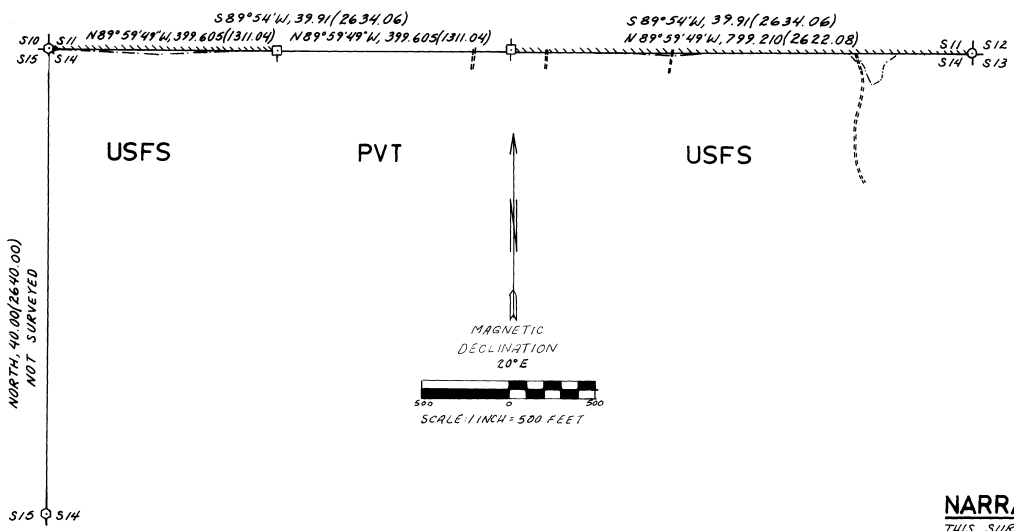
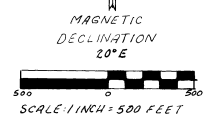


PVT PVT PVT USFS



PVT
NORTH, 40.00(2640.00)
NOT SURVEYED

USFS PVT USFS USFS



LEGEND

- FOUND ALUMINUM CAP SET BY LS 1636 IN 1987
- SET 2" I.D. GALVANIZED IRON PIPE 30" LONG WITH 2 1/2" BRASS CAP FROM EXISTING EVIDENCE.
- SET 2" I.D. GALVANIZED IRON PIPE 30" LONG WITH 2 1/2" BRASS CAP BY SURVEY.
- BOUNDARY OF NATIONAL FOREST SYSTEM LANDS POSTED.
- - - FENCE WITH POSSIBLE ENCROACHMENT.
- === ROAD INTERSECTING POSTED BOUNDARY OR SURVEY LINE.
- N89°59'49"W, 799.210(2622.08) - SURVEY BEARING WITH DISTANCE IN METERS AND FEET.
- S89°54'W, 39.91(2634.06) - G.L.O. RECORD BEARING WITH DISTANCE IN CHAINS AND FEET.

NOTES

- BEARINGS ARE BASED ON POLARIS OBSERVATIONS FROM THE CORNER COMMON TO SECTIONS 10, 11, 14 AND 15.
- FOR ADDITIONAL INFORMATION ON CORNERS MONUMENTED OR REMONUMENTED, SEE THE 'CERTIFIED RECORD OF LAND CORNER MONUMENTATION' FORMS FILED HEREWITH.
- FIELD BOOK REFERENCE - TRAVERSE BOOK 3 AND MONUMENTATION AND POLARIS OBSERVATION BOOK 4 OF THE INDIAN 1987 CADASTRAL SURVEY.

HISTORY

- GEORGE PERSHIN, UNDER G.L.O. CONTRACT NO. 430, DATED MARCH 23, 1882, SUBDIVIDED T.3S, R.32E, W.1M.
- OREGON L.S. 1636, REMONUMENTED THE CORNER COMMON TO SECTIONS 11, 12, 13 AND 14, IN 1987.

NARRATIVE

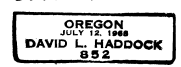
THIS SURVEY WAS PERFORMED AT USDA FOREST SERVICE REQUEST DURING OCTOBER AND NOVEMBER OF 1987. THE PURPOSE OF THE SURVEY WAS TO REMONUMENT THE NORTHWEST SECTION CORNER AND WEST AND NORTH QUARTER CORNERS OF SECTION 14. THE PURPOSE ALSO INCLUDED ESTABLISHING THE WEST ONE SIXTEENTH CORNER AND TO POST THE BOUNDARY BETWEEN NATIONAL FOREST SYSTEM LANDS AND PRIVATE LANDS ALONG THE SECTION LINE BETWEEN SECTIONS 11 AND 14 OF T.3S, R.32E, W.1M IN UMATILLA COUNTY, OREGON.

THE NORTHWEST SECTION CORNER AND THE WEST ONE QUARTER CORNER WERE REMONUMENTED FROM EXISTING EVIDENCE IN THE FORM OF ORIGINAL STONES IN STONE MOUNDS. THE SECTION CORNER MONUMENT AT THE NORTHWEST CORNER AND THE MONUMENT PREVIOUSLY SET AT THE NORTHEAST CORNER OF SECTION 14 WERE USED AS CONTROL POINTS IN A CLOSED TRAVERSE SURVEY USING A WILD T-2 THEODOLITE AND A WILD DI-10 INFRA-RED EDM. THIS SURVEY IS DEPICTED ON THE SURVEY CONTROL DIAGRAM. THE ONE-QUARTER AND WEST ONE SIXTEENTH CORNERS COMMON TO SECTIONS 11 AND 14 WERE SET ON THE BASIS OF SINGLE PROPORTIONMENT AND THIS SURVEY ACCORDING TO THE B.L.M. MANUAL OF SURVEYING INSTRUCTIONS-1973 AND CONTRACT SPECIFICATIONS. THE BOUNDARIES OF NATIONAL FOREST SYSTEM LANDS WERE POSTED WITH 6" STEEL POSTS AND FOREST SERVICE BOUNDARY SIGNS.

SURVEYOR'S CERTIFICATION

I, DAVID L. HADDOCK, A REGISTERED PROFESSIONAL LAND SURVEYOR IN THE STATE OF OREGON, HEREBY CERTIFY, THAT THIS PLAT, AND THE NOTES HEREON, OR ATTACHED, ARE A CORRECT REPRESENTATION OF A SURVEY PERFORMED UNDER MY DIRECT SUPERVISION DURING THE MONTHS OF OCTOBER AND NOVEMBER OF 1987, AT THE REQUEST OF THE USDA FOREST SERVICE, IN ACCORDANCE WITH THE STATUTES OF THE STATE OF OREGON AND WITH THE ARTICLES OF THIS CONTRACT.

David L. Haddock
DAVID L. HADDOCK
OREGON LICENSE NO 852



TOWNSHIP 3 SOUTH, RANGE 32 EAST
WILLAMETTE MERIDIAN
SUBDIVISION OF SECTION 14
INDIAN 1987 CADASTRAL SURVEY
UMATILLA COUNTY, OREGON
UMATILLA NATIONAL FOREST
CONTRACT NO. 53-04R3-7-38

RECEIVED BY
Umatilla County Survey
Date 12-87
Rec'd By [Signature]
No. 87-68-B

EXAMINED AND ACCEPTED FOR THE U.S. FOREST SERVICE
THIS 23 DAY OF November 1987
Dennis R. Jayland C.O.R.
I CERTIFY THAT THIS SURVEY WAS PERFORMED AT THE REQUEST OF THE UMATILLA NATIONAL FOREST
John P. Klein 11/23/87
NATIONAL FOREST SUPERVISOR DATE