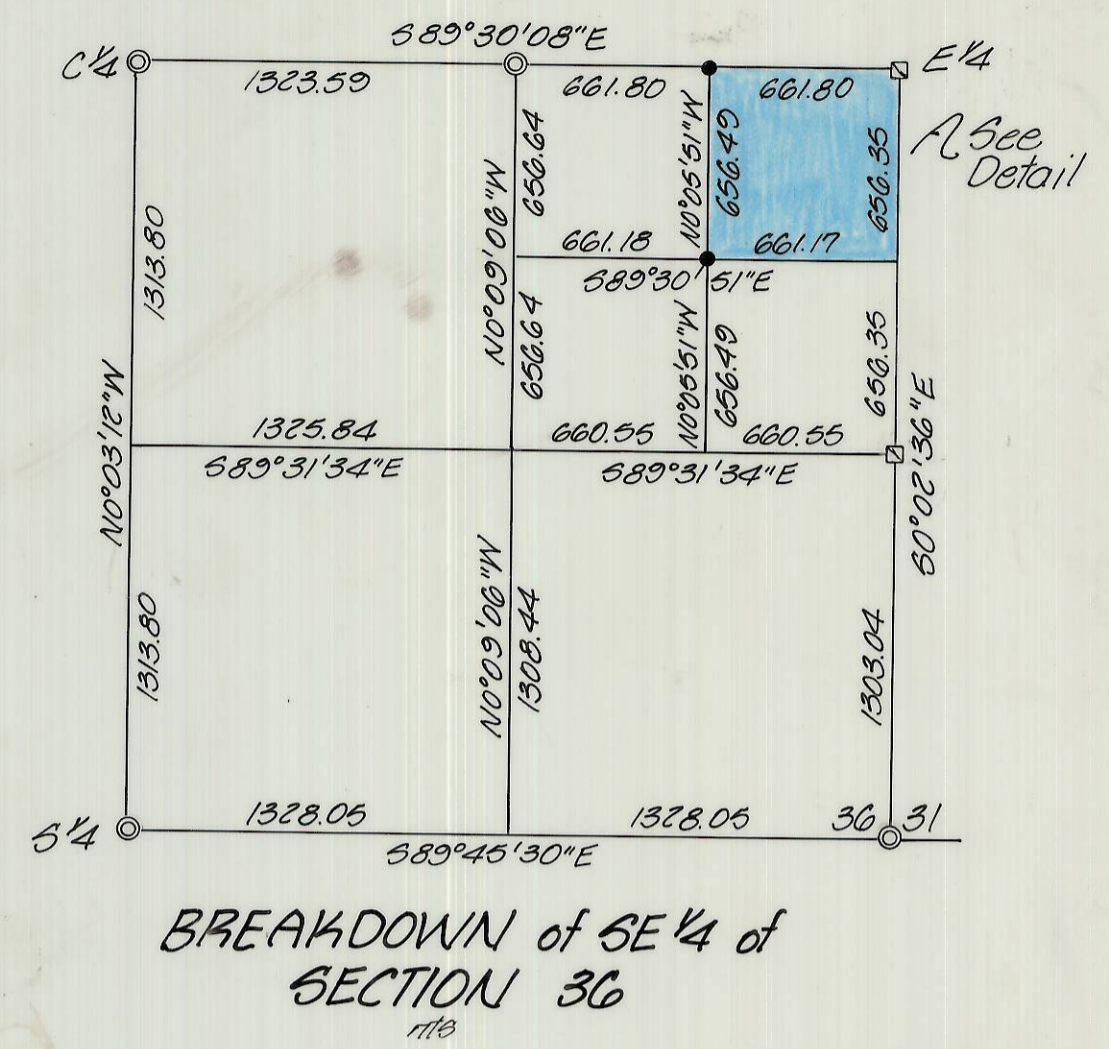


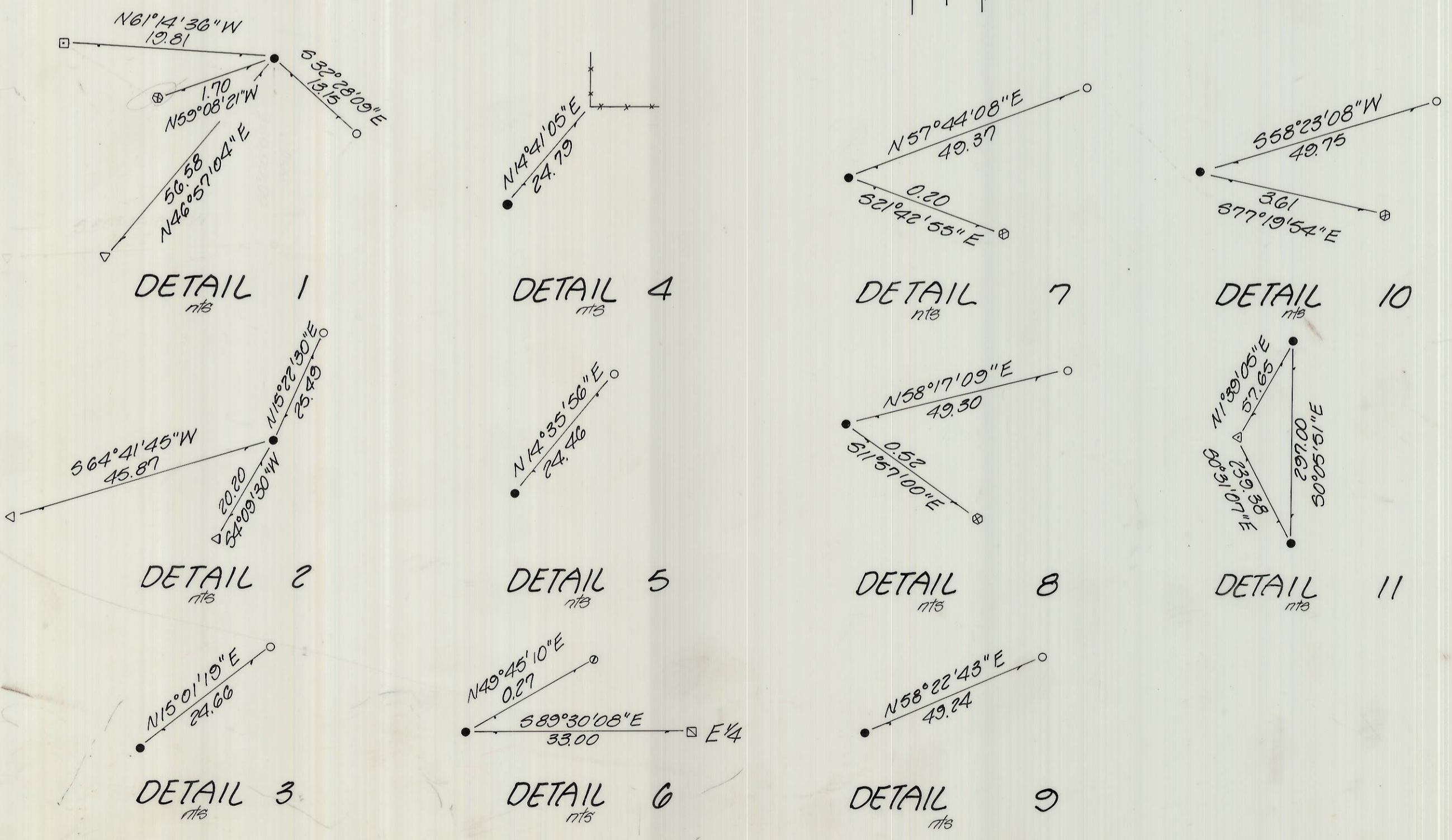
NE 1/4, NE 1/4, SE 1/4 of Section 36
1"=100'



BREAKDOWN of SE 1/4 of SECTION 36
11/8

NARRATIVE

- denotes set 3/8" x 30" iron pin with aluminum cap stamped PLS 933
- ⊙ denotes find Brass Cap, Co Surveyor No.
- ⊠ denotes find 2" i. pipe, set by Kimbrell
- ⊗ denotes find 1" i. pipe, assumed by Cramer
- ⊙ denotes find 4" steel disc, assumed by Cramer
- ⊠ denotes find 2" pipe, unknown origin
- ▽ denotes find 1/2" iron pin, set by Edwards
- ⊙ denotes find 3/8" iron pin set by Harris
- ▽ denotes find 1/2" iron pin, unknown origin



KRUMBEIN ENGINEERING LTD. ENGINEERS - SURVEYORS - PLANNERS 361 S.E. Second Pendleton, Oregon	Scale 1"=100'	Dwn. By MLD	Dwg. No. 85-03C	Revision 1
	Date 11-13-85	Ckd. By DHK	Job No. Umatilla Surveyor	Revision 2
Survey for UMATILLA COUNTY SURVEYOR			RECEIVED BY Umatilla County Surveyor Date <u>6-88</u> Rec'd by <u>RA</u> No. <u>85-28-B</u>	
NE 1/4, NE 1/4, SE 1/4, Sec. 36, T5N, R28E, W1M.				