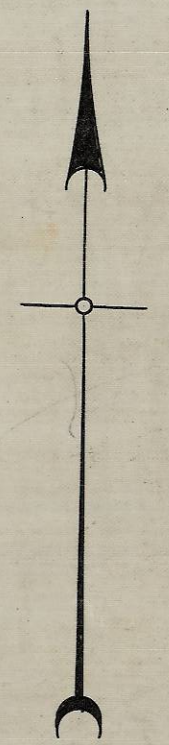
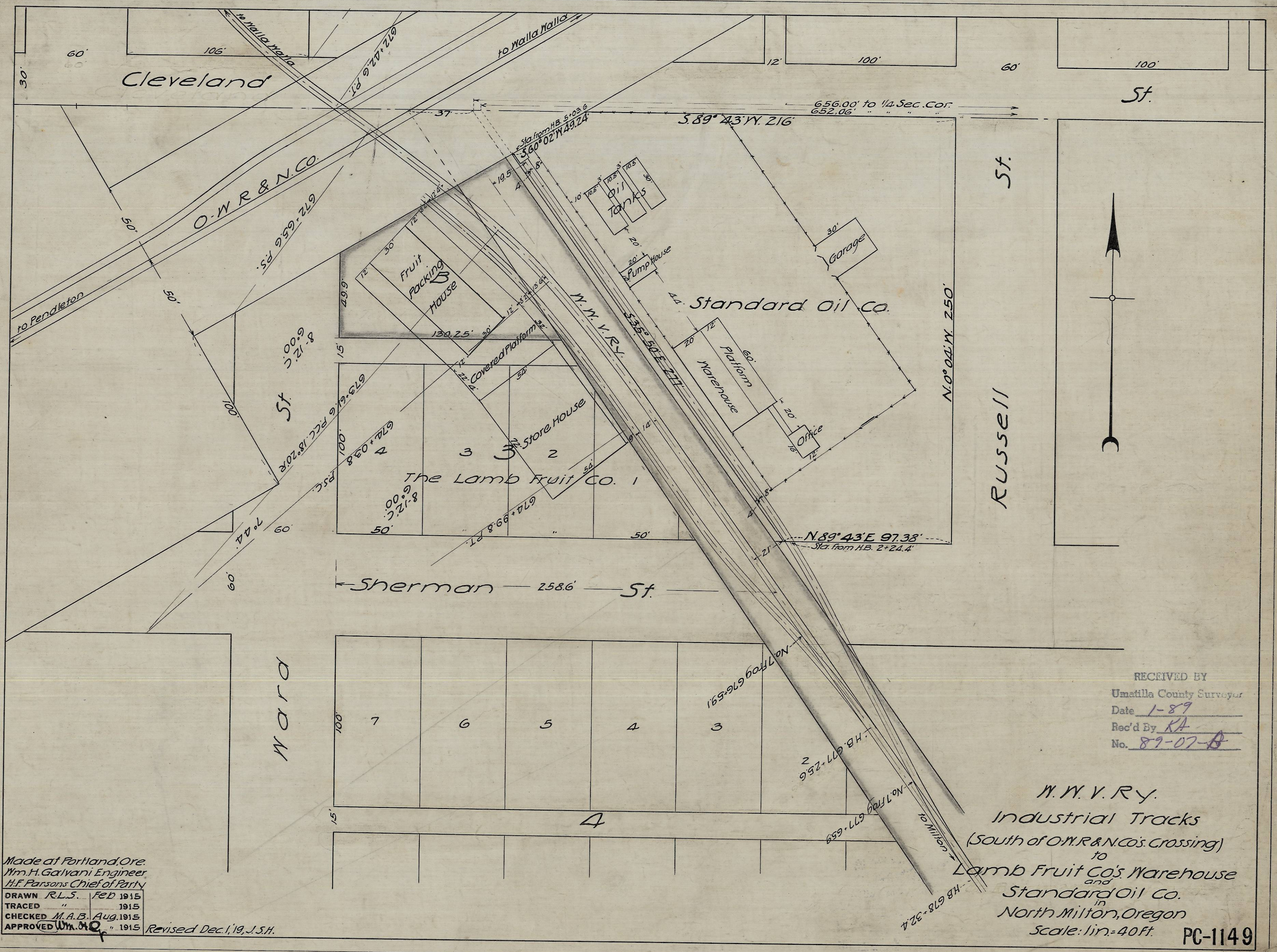


0000

Plat 30. W.W.V. R.W. Plat



RECEIVED BY
 Umatilla County Surveyor
 Date 1-89
 Rec'd By KA
 No. 89-07-B

M.W.V. Ry.
 Industrial Tracks
 (South of O.W.R. & N. Co's. Crossing)
 to
 Lamb Fruit Co's Warehouse
 and
 Standard Oil Co.
 in
 North Milton, Oregon
 Scale: lin. = 40ft. **PC-1149**

Made at Portland, Ore.
 Wm. H. Galvani Engineer
 H.F. Parsons Chief of Party
 DRAWN R.L.S. Feb 1915
 TRACED " " 1915
 CHECKED M.A.B. Aug. 1915
 APPROVED W.H. " 1915
 Revised Dec. 1, 19, J.S.H.