

NARRATIVE

The purpose of this survey was to bury and reference section corners and 1/4 corners which are in danger of obliteration by farming operations. T3U, R27E was completely re-surveyed in a 1940 Dependent Resurvey by Gould of the General Land Office.

The instrument used was a Pentax TH-E-100 and Pentax MD-14.

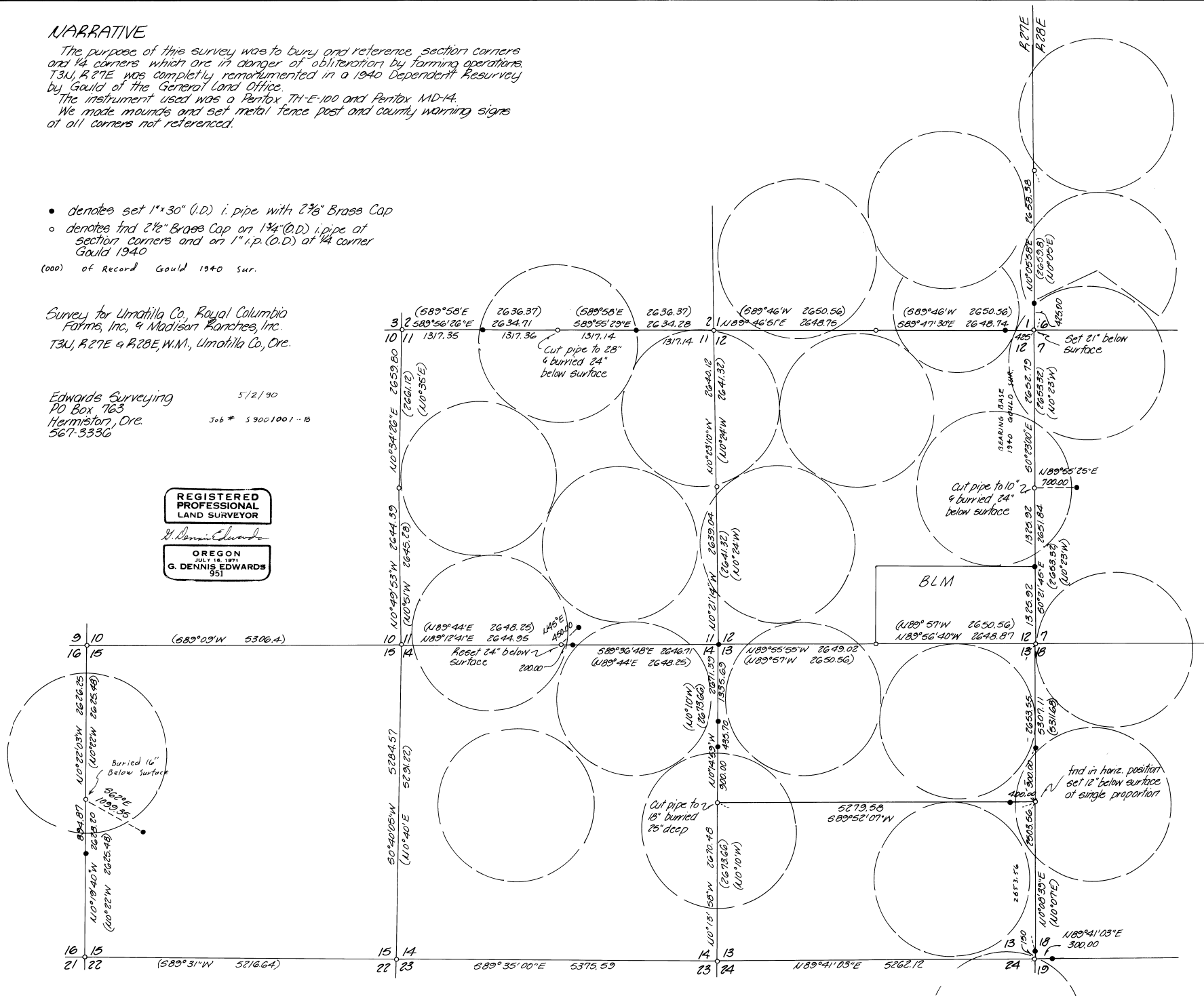
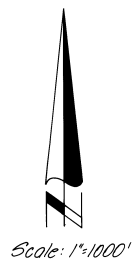
We made mounds and set metal fence post and county warning signs at all corners not referenced.

- denotes set 1" x 30" (I.D.) i. pipe with 2 3/8" Brass Cap
- denotes find 2 1/2" Brass Cap on 1 3/4" (O.D.) i. pipe at section corners and on 1" i.p. (O.D.) at 1/4 corner Gould 1940

(000) of Record Gould 1940 sur.

Survey for Umatilla Co, Royal Columbia Farms, Inc, & Madison Ranches, Inc.
T3U, R27E & R28E, W.M., Umatilla Co, Ore.

Edwards Surveying 5/2/90
PO Box 163
Hermiston, Ore. 567-3336
Job # 59001001-B



RECEIVED
7-90
KA
90-49-B
Job # 59001001-B