

SURVEY FOR
 BLUE MOUNTAIN GROWERS ASSOCIATION
 NE 1/4 SE 1/4 SEC. 2 & NW 1/4 SW 1/4 SEC. 1 T.5N., R.35E.W.M..
 SCALE 1" = 100' Feb. 5, 1992

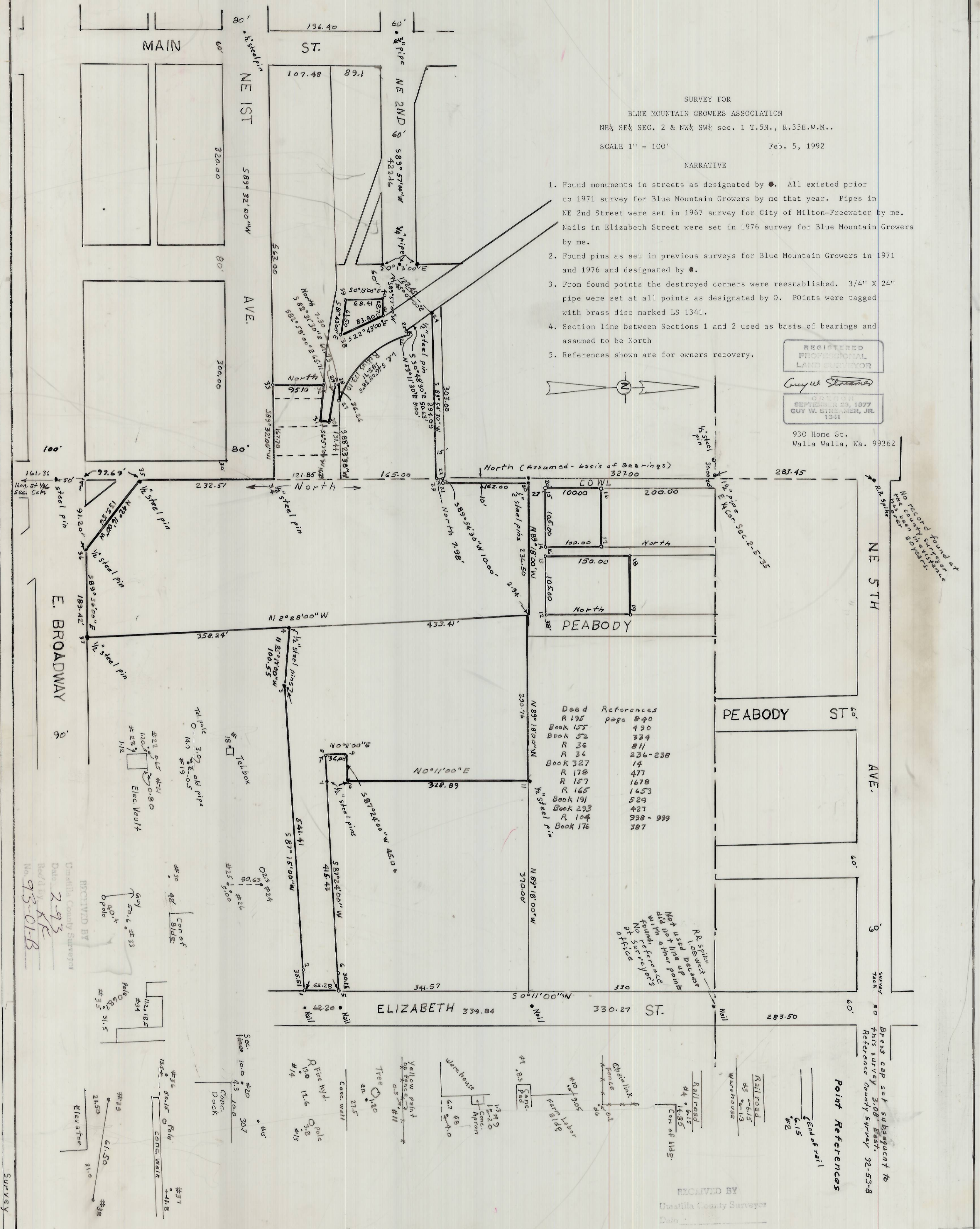
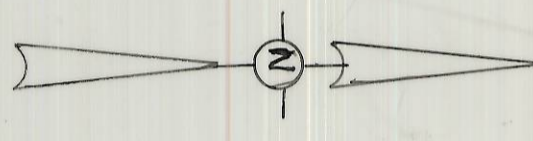
NARRATIVE

1. Found monuments in streets as designated by ●. All existed prior to 1971 survey for Blue Mountain Growers by me that year. Pipes in NE 2nd Street were set in 1967 survey for City of Milton-Freewater by me. Nails in Elizabeth Street were set in 1976 survey for Blue Mountain Growers by me.
2. Found pins as set in previous surveys for Blue Mountain Growers in 1971 and 1976 and designated by ○.
3. From found points the destroyed corners were reestablished. 3/4" X 24" pipe were set at all points as designated by ○. Points were tagged with brass disc marked LS 1341.
4. Section line between Sections 1 and 2 used as basis of bearings and assumed to be North
5. References shown are for owners recovery.

REGISTERED
 PROFESSIONAL
 LAND SURVEYOR

Guy W. Stremmer
 GUY W. STREMMER, JR.
 1941

930 Home St.
 Walla Walla, Wa. 99362



Deed	References
Book	Page
R 195	327
Book 155	190
Book 52	334
R 36	811
R 36	236-238
Book 327	14
R 178	477
R 157	1678
R 165	1653
Book 191	529
Book 293	427
R 104	998-999
Book 176	387

No record found at
 the county clerk's office
 for the year 1971.

Not used because
 did not line up
 with other points
 found references
 No surveyors
 office

Point References
 End of rail
 #1.5
 #2

RECEIVED BY
 Wasilla County Surveyor
 Date _____
 Rec'd by _____
 No. _____

RECEIVED BY
 Wasilla County Surveyor
 Date 2-9-93
 Rec'd by KR
 No. 93-01-B