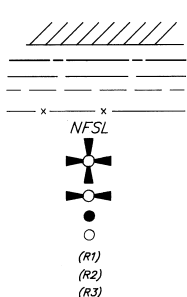


RECORD OF SURVEY

SECTION 30, TOWNSHIP 1 NORTH, RANGE 37 EAST, WILLAMETTE MERIDIAN, UMATILLA COUNTY, OREGON

LEGEND



POSTED LINE AT MAXIMUM 300' SPACING WITH STEEL POST WITH WIRED ON PROPERTY BOUNDARY SIGN.
SECTION LINE
QUARTER SECTION LINE
16TH SECTION LINE
EXISTING FENCE
NATIONAL FOREST SYSTEM LAND

SECTION CORNER (SEE LAND CORNER RECORD FORMS)
QUARTER CORNER (SEE LAND CORNER RECORD FORMS)
FOUND MONUMENT (SEE LAND CORNER RECORDS FORMS)
SET SECTION SUBDIVISION MONUMENT (SEE LAND CORNER RECORDS FORMS)
HERMAN D. GRADON, CONTRACT 452, DATED JUNE 1882
1989, RECORD OF SURVEY 89-101-B, GRIFFITH, "PLS 844"
JACOB C. COOPER, CONTRACT 397, DATED JULY, 1881

BASIS OF BEARING

OREGON NORTH ZONE NAD 83 (1991) BASED ON GEODETIC CONTROL STATIONS THAT WERE ESTABLISHED WITH G.P.S. BY DAVID EVANS & ASSOCIATES AND WHITE SHIELD, INC. (SEE GEODETIC CONTROL DIAGRAM FOR CONTROL, THIS SHEET)

GEODETIC CONTROL

SCALE 1" = 4000'
DATUM, OREGON NORTH ZONE, NAD 83 (1991)

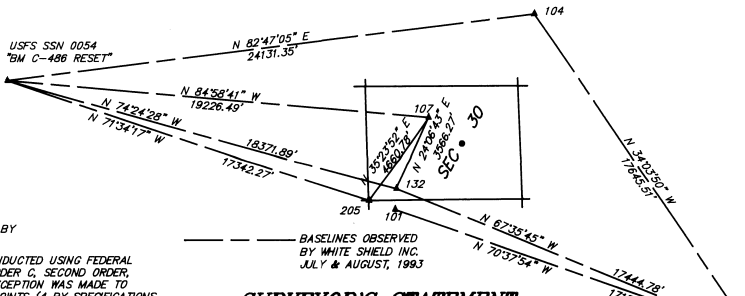
POINT	INTERNATIONAL FEET	NORTHING	EASTING
54	692703.494	8763209.406	
101	692804.548	8760852.568	
104	695714.271	8787148.872	
107	691020.468	8782382.095	
132	687765.354	8780805.199	
178	681116.490	8797033.215	
205	687221.227	8779882.342	

NOTE: U.S.F.S. GEODETIC CONTROL ESTABLISHED BY DAVID EVANS AND ASSOCIATES.

THE GEODETIC CONTROL SURVEY WAS CONDUCTED USING FEDERAL GEODETIC CONTROL COMMITTEE (FGCC) ORDER C, SECOND ORDER, CLASS 1 GPS SURVEY SPECIFICATIONS. EXCEPTION WAS MADE TO NUMBER OF TIES TO EXISTING CONTROL POINTS (4 BY SPECIFICATIONS, 2 WERE ACTUALLY MADE).

HISTORY OF SURVEYS

- 1881 JACOB C. COOPER, CONTRACT 397, DATED JULY 1881 ESTABLISHED THE RANGE LINE BETWEEN RANGES 36/37 EAST
- 1882 HERMAN D. GRADON, CONTRACT 452, DATED JUNE 1882 SUBDIVIDED T.1N., R.37E.
- 1989 DUANE GRIFFITH, PLS 844, RETRACED AND MONUMENTED PORTIONS OF THE BASELINE AND RANGE LINE FOR U.S.F.S. CONTRACT NO.00-04R3-8-68 "SPRING CADASTRAL"



SURVEYOR'S STATEMENT

I, MICHAEL P. LEJEUNE, A PROFESSIONAL LAND SURVEYOR IN THE STATE OF OREGON, HEREBY CERTIFY THAT THIS PLAT AND NOTES HEREON OR ARE ATTACHED ARE A TRUE AND CORRECT REPRESENTATION OF THE SURVEY MADE IN JULY THROUGH SEPTEMBER, 1993, AT THE REQUEST OF THE U.S.F.S. IN THE ACCORDANCE WITH THE STATUTES OF THE STATE OF OREGON AND WITH THE ARTICLES OF MY CONTRACT LOCATED IN SECTION 30, T.1 N., R.37 E., WILLAMETTE MERIDIAN, UMATILLA COUNTY, OREGON.

TRIMBLE 4000ST GPS RECEIVERS WERE USED FOR THE GEODETIC TO U.S.F.S. CONTROL. THE BASE CONTROL NETWORK WAS ESTABLISHED BY DAVID EVANS AND ASSOCIATES. I ESTABLISHED AT THIS TIME A DIRECT TIE ON THE SOUTHWEST CORNER OF THE SECTION WITH A FEW RANDOM CONTROL POINTS FOR TRAVERSE CONTROL. THE CO-ORDINATES ARE BASED ON THE OREGON NORTH ZONE NAD 83 (1991). A TOPCON GTS-302 (3-SECOND) TOTAL STATION WAS USED FOR THE CONVENTIONAL GROUND TRAVERSES. THIS INSTRUMENT WAS RECENTLY CALIBRATED ON THE BASELINE LOCATED AT YAKIMA, WASHINGTON, IN THE SPRING OF 1993.

THE WEST LINE OF THE SECTION WAS RETRACED AND AGREED WITH. THE SURVEY WAS BY DUANE GRIFFITH, PLS 844. ADDITIONAL ACCESSORIES WERE SET FOR THE WEST 1/4 CORNER. A CONTROL TRAVERSE WAS MADE AROUND THE EXTERIOR OF THE SECTION LOCATING THE CONTROLLING CORNERS. AT THE SOUTH 1/4 CORNER I FOUND THE SOUTHEAST BEARING TREE. THIS POSITION FITS THE TOPO CALL FOR THE GREEK AT 4.5 CHAINS TO THE WEST. ALSO IT IS CONSISTENT WITH THE SHORT 1/2 MILE DISTANCES BETWEEN FOUND SECTION CORNERS ON THE EAST AND WEST SECTION LINES. THE SOUTHEAST CORNER WAS RE-ESTABLISHED FROM 2 BEARING TREES. THE ORIGINAL STONE WAS FOUND LOOSE ON THE GROUND DOWNHILL OF THE CORRECT POSITION. AT THE EAST 1/4 CORNER I SEARCHED AT A MID-POINT PROPORTION AND AT RECORD 2840 DISTANCES FROM EACH SECTION CORNER. NO EVIDENCE WAS FOUND. THE NORTHEAST CORNER WAS RE-POSITIONED FROM 1 ORIGINAL BEARING TREE. NO EVIDENCE WAS FOUND AT THE NORTH 1/4 CORNER AT VARIOUS SEARCH AREAS THAT INCLUDED THE SHORT 1/2 MILE DISTANCE, PROPORTION DISTANCE AND AT RECORD DISTANCES FROM EACH SECTION CORNER. TOPO CALLS ON THE NORTH SECTION LINE ARE TO THE NEAREST TO CHAINS AND WERE NOT USED FOR PROPORTIONING.

THE ONLY ENCROACHMENT THAT EXISTS IS THE OLDER CABIN AS SHOWN ON THE SURVEY. THE U.S.F.S. AND THE PRIVATE LAND OWNER HAVE BEEN NOTIFIED OF THIS SITUATION.

REGISTERED PROFESSIONAL LAND SURVEYOR

Michael P. Lejeune

MICHAEL P. LEJEUNE, OREGON P.L.S. 2535

U.S. FOREST SERVICE APPROVAL

EXAMINED AND ACCEPTED FOR THE U.S. FOREST SERVICE THIS 26TH DAY OF OCTOBER, 1993

Dennis L. Hayford C.O.R.

I CERTIFY THAT THIS SURVEY WAS PERFORMED AT THE REQUEST OF THE UMATILLA NATIONAL FOREST.

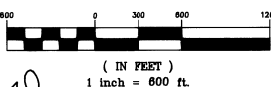
NATIONAL FOREST SUPERVISOR

John E. Jensen 10/27/93
SIGNATURE DATE

OREGON 11473
JAN 21, 1992
MICHAEL P. LEJEUNE
2535

EXP 03 12/31/94

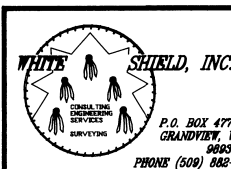
GRAPHIC SCALE



CONVERSION FACTOR
INTERNATIONAL FEET
1 FOOT = 0.3048 METER
MEAN PROJECT SCALE FACTOR 0.999915
ELEVATION FACTOR (3400') 0.999872
COMBINED FACTOR 0.999752

NOTES:
ALL FOUND DISTANCES ARE GRID DISTANCES
DISTANCES OF RECORD ARE "ON THE GROUND" MEASUREMENTS
BEARINGS OF RECORD ARE BASED UPON GEODETIC NORTH

RECEIVED BY
Umatilla County Surveyor
Date 12-93
By *VP*
No. 93-93-B



HOSKINS CADASTRAL SURVEY
UMATILLA NATIONAL FOREST
CON. No. 53-04R3-2-101
SEC. 30, T.1N., R.37E., W.M.

FIELD BOOKS 1,2,3 OF 3
SCALE: 1"=800' JOB # FS-1093

SURVEY BY: DH,WC DRAWN BY: EJB CHECKED BY: MPL DATE: 9/28/93