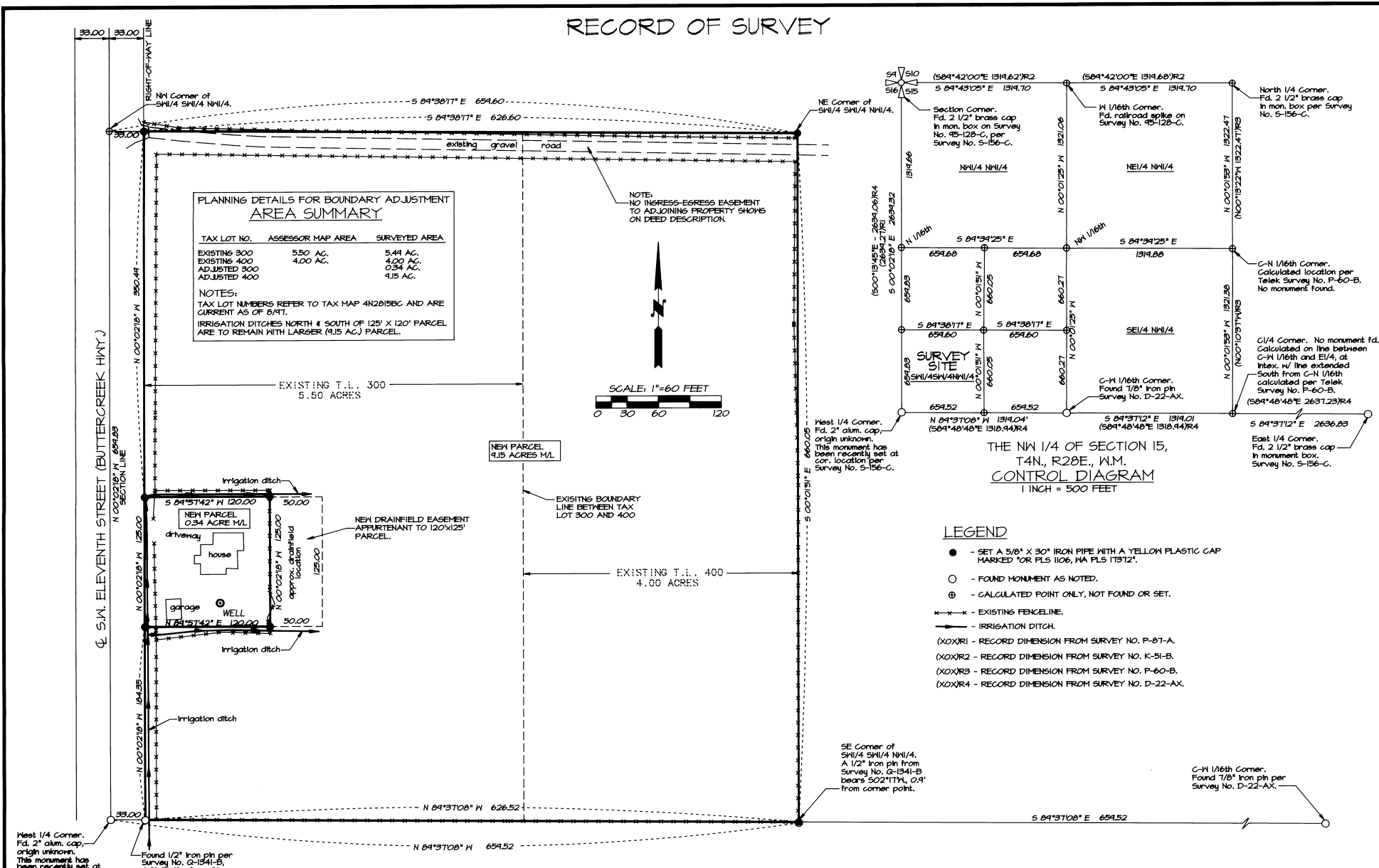


RECORD OF SURVEY



**PLANNING DETAILS FOR BOUNDARY ADJUSTMENT
AREA SUMMARY**

TAX LOT NO.	ASSESSOR MAP AREA	SURVEYED AREA
EXISTING 300	5.50 AC.	5.44 AC.
EXISTING 400	4.00 AC.	4.00 AC.
ADJUSTED 300		0.34 AC.
ADJUSTED 400		9.15 AC.

NOTES:
TAX LOT NUMBERS REFER TO TAX MAP 4N2B15BC AND ARE CURRENT AS OF 8/91.
IRRIGATION DITCHES NORTH & SOUTH OF 125' X 120' PARCEL ARE TO REMAIN WITH LARGER (9.15 AC.) PARCEL.

**THE NW 1/4 OF SECTION 15,
T4N., R28E., N.M.
CONTROL DIAGRAM
1 INCH = 500 FEET**

LEGEND

- - SET A 5/8" X 30" IRON PIPE WITH A YELLOW PLASTIC CAP MARKED *OR PLS 1106, IN A PLS 11512".
- - FOUND MONUMENT AS NOTED.
- ⊕ - CALCULATED POINT ONLY, NOT FOUND OR SET.
- - EXISTING FENCELINE.
- - - - IRRIGATION DITCH.
- (XOX)R1 - RECORD DIMENSION FROM SURVEY NO. P-81-A.
- (XOX)R2 - RECORD DIMENSION FROM SURVEY NO. K-51-B.
- (XOX)R3 - RECORD DIMENSION FROM SURVEY NO. P-60-B.
- (XOX)R4 - RECORD DIMENSION FROM SURVEY NO. D-22-AX.

NARRATIVE OF SURVEY

THIS SURVEY WAS MADE AT THE REQUEST OF JERRY BRANDT TO ADJUST THE BOUNDARIES OF TAX LOTS 300 & 400, MAP 4N 2B 15BC. BOUNDARY ADJUSTMENT DESCRIPTIONS ARE PREPARED SEPARATELY.

THE SURVEY WAS MADE WITH A 2 PERSON CREW USING A COMBINATION OF STATIC GLOBAL POSITIONING MEASUREMENTS AND A SOKKIA SET 45 FIVE SECOND TOTAL STATION. TOTAL STATION MEASUREMENTS WERE MADE BY A COMBINATION OF RADIAL TIES AND CLOSED TRAVERSES. MONUMENTS WERE ESTABLISHED BY RADIAL METHODS AND VERIFIED BY SEPARATE OBSERVATIONS.

RECEIVED BY
Umatilla County Surveyors
Date: 11-97
Rec'd by: RK
No. 97-209-P

REGISTERED
PROFESSIONAL
LAND SURVEYOR
William R. Wells
OREGON
JULY 22, 1977
WILLIAM R. WELLS
1106
RENEWS 6/30/98

WILLIAM R. WELLS, PLS
357 N.E. HWY. 11
P.O. BOX 1696
PENDLETON, OR 97801
PHONE: (541) 276-6362
DATE: 8/14/97 DR. BY: DMT
CK. BY: RWB NO: 97-460

PROJECT:
BOUNDARY LINE ADJUSTMENT
FOR:
JERALD & DEBORAH
BRANDT
LOCATED IN THE SW 1/4 OF THE NW 1/4 OF
SECTION 15, TOWNSHIP 4 NORTH, RANGE
20 EAST, T14M, UMATILLA COUNTY, OREGON.

VRANDLA