

LAND CORNER RECORDS

BASIS OF BEARINGS

OREGON NORTH ZONE STATE PLANE GRID BEARINGS BASED ON G.P.S. OBSERVATIONS TAKEN AT THE N 1/4 CORNER OF SECTION 3.  
 LATITUDE 45 58 39.57265 NORTH  
 LONGITUDE 116 9 16.15243 WEST  
 THETA 1°39'48.26"  
 MAGNETIC DECLINATION 21° E  
 ROTATE BEARINGS CLOCKWISE TO OBTAIN GEODETIC.

NARRATIVE

THIS SURVEY WAS PERFORMED AT THE REQUEST OF MR. MONTY THOMAS TO SURVEY AND MARK THE BOUNDARIES OF THE S.E. 1/4 OF SECTION 26, NAD BY TOM BEECHINOR TO SURVEY AND MARK THE SOUTH AND EAST LINES OF THE N.W. 1/4 OF SECTION 26. THE AREA AROUND THE EAST 1/4 CORNER OF SECTION 26 HAS BEEN HEAVILY LOGGED AND IS CRISS-CROSSED WITH SKID ROADS AFTER A THOROUGH SEARCH OF THE ENTIRE AREA NO EVIDENCE OF THE ORIGINAL 1/4 CORNER COULD BE FOUND. THEREFORE, IT WAS ESTABLISHED AT THE MIDPOINT OF A LINE BETWEEN THE FOUND N.E. AND S.E. CORNERS. THE SURVEYED LINES WERE MARKED WITH 6" STUDDED "T" STEEL FENCE POSTS. THIS SURVEY WAS PERFORMED USING SOKKIA AUTOMATIC TOTAL STATIONS HAVING STANDARD ERRORS OF 00°00'03" ANGULAR AND 3MM ± 3PPM TIMES THE DISTANCE, AND 00°00'00" ANGULAR AND 3MM ± 2PPM TIMES THE DISTANCE. ALL TRAVERSES WERE CLOSED AND ADJUSTED USING THE LEAST SQUARES METHOD. MONUMENTS SHOWN WERE VISITED DURING THE TIME PERIOD OF NOVEMBER 1995 THROUGH APRIL OF 1996.

LAND CORNER RECORDS

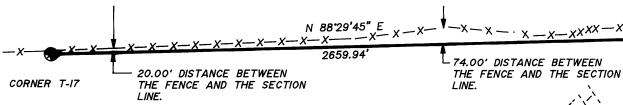
CORNER CODE T-17

WEST 1/4 CORNER OF SECTION 26, AND EAST 1/4 CORNER OF SECTION 27

HISTORY: CORNER WAS ORIGINALLY ESTABLISHED, IN 1872, BY GEORGE WILLIAMS, U.S. DEPUTY SURVEYOR, UNDER CONTRACT NO. 176, AS A POST, FROM WHICH A TAMARACK, 10" IN DIAM, BEARS S.70°E., 24 LKS. 15.64' DIST, AND A RED FIR, 4" IN DIAM, BEARS N.10°W., 15 LKS.(9.9') DIST.

EVIDENCE FOUND: A EAST-WEST FENCE 15' NORTH OF CORNER, A DOWN 18" TAMARACK LOG, BLAZE EVIDENT, NO SCRIBE, N 70° W., 15.8' DISTANCE FROM CORNER, AND A RED FIR STUMP, BEARS N 10° W., 9.9' DISTANCE FROM CORNER.

CORNER PERPETUATION: SET A 5/8" X 30" REBAR WITH YELLOW CAP STAMPED "TOMKINS SURVEYING", WITH THE FOLLOWING BEARING TREES FOR ACCESSORIES; A TAMARACK, 8" IN DIAM, BEARS S 29°08'00" W., 8.20' DIST, AND A WHITE FIR, 16" IN DIAM, BEARS N 14°36'00" E., 21.4' DIST.



CORNER CODE T-19

CENTER 1/4 CORNER OF SECTION 26

HISTORY: NONE  
 EVIDENCE FOUND: NONE

CORNER PERPETUATION: SET A 5/8" X 30" REBAR WITH 2 1/2" ALUMINUM CAP STAMPED "TOMKINS SURVEYING T6N R36E C/4 S26 1996 WA 25893 - OR 2360". USED THE FOLLOWING BEARING TREES FOR ACCESSORIES; A DOUGLAS FIR, 12" IN DIAM, BEARS N 9 1/2° W., 21.40' DIST., MARKED C/4 S26 B.T., A DOUGLAS FIR, 5" IN DIAM, BEARS N 84° E., 11.70' DIST., MARKED C/4 S26 B.T., A DOUGLAS FIR, 14" IN DIAM, BEARS S 8° W., 20' DIST., MARKED C/4 S26 B.T., A DOUGLAS FIR, 8" IN DIAM, BEARS N 78 1/2° W., MARKED C/4 B.T., ALL BEARING TREES TAGGED WITH NAIL AND BRASS WASHER STAMPED "WA 25893 - 2360." BEARING TREES ESTABLISHED WITH A STEEL TAPE AND HAND COMPASS.

CORNER CODE T-21

EAST 1/4 CORNER OF SECTION 26, AND WEST 1/4 CORNER OF SECTION 25

HISTORY: CORNER WAS ORIGINALLY ESTABLISHED, IN 1872, BY GEORGE WILLIAMS, U.S. DEPUTY SURVEYOR, UNDER G.L.O. CONTRACT NO. 176, AS A POST, FROM WHICH A TAMARACK, 12" IN DIAM, BEARS N 10° W., 65LKS (42.9') DIST., A FIR, 8" IN DIAM, BEARS S 20° E., 20 LKS (13.2') DIST.

EVIDENCE FOUND: NONE

CORNER PERPETUATION: SET A 1 1/2" GALVANIZED PIPE WITH 2 1/2" BRASS CAP STAMPED "T6N R37E 1/4 S26/S25 1996", WITH THE FOLLOWING BEARING TREES FOR ACCESSORIES; A DOUGLAS FIR, 27" IN DIAM, BEARS N 78°00' W., 32' DIST., MARKED 1/4 S26 B.T., A DOUGLAS FIR, 6" IN DIAM, BEARS N 66°00' E., 6.80' DIST., MARKED 1/4 S25 B.T., A DOUGLAS FIR, 12" IN DIAM, BEARS S 57°36'00" E., 23.80' DIST., MARKED 1/4 S25 B.T., A DOUGLAS FIR, 32" IN DIAM, BEARS S 2°58'00" W., 23' DIST., MARKED 1/4 S25 B.T., ALL BEARING TREES TAGGED WITH NAIL AND BRASS WASHER STAMPED "WA 25893 - OR 2360."

NORTH-SOUTH FENCE IS 5674' WEST OF SOUTH 1/4 CORNER SECTION 26.

SET CORNER AS DESCRIBED ABOVE

BEECHINOR

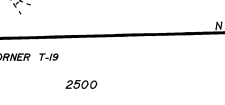
CORNER CODE T-19

WEST 1/4 CORNER OF SECTION 26, AND EAST 1/4 CORNER OF SECTION 27

HISTORY: CORNER WAS ORIGINALLY ESTABLISHED, IN 1872, BY GEORGE WILLIAMS, U.S. DEPUTY SURVEYOR, UNDER CONTRACT NO. 176, AS A POST, FROM WHICH A TAMARACK, 10" IN DIAM, BEARS S.70°E., 24 LKS. 15.64' DIST, AND A RED FIR, 4" IN DIAM, BEARS N.10°W., 15 LKS.(9.9') DIST.

EVIDENCE FOUND: A EAST-WEST FENCE 15' NORTH OF CORNER, A DOWN 18" TAMARACK LOG, BLAZE EVIDENT, NO SCRIBE, N 70° W., 15.8' DISTANCE FROM CORNER, AND A RED FIR STUMP, BEARS N 10° W., 9.9' DISTANCE FROM CORNER.

CORNER PERPETUATION: SET A 5/8" X 30" REBAR WITH YELLOW CAP STAMPED "TOMKINS SURVEYING", WITH THE FOLLOWING BEARING TREES FOR ACCESSORIES; A TAMARACK, 8" IN DIAM, BEARS S 29°08'00" W., 8.20' DIST, AND A WHITE FIR, 16" IN DIAM, BEARS N 14°36'00" E., 21.4' DIST.



CORNER CODE T-19

CENTER 1/4 CORNER OF SECTION 26

HISTORY: NONE  
 EVIDENCE FOUND: NONE

CORNER PERPETUATION: SET A 5/8" X 30" REBAR WITH 2 1/2" ALUMINUM CAP STAMPED "TOMKINS SURVEYING T6N R36E C/4 S26 1996 WA 25893 - OR 2360". USED THE FOLLOWING BEARING TREES FOR ACCESSORIES; A DOUGLAS FIR, 12" IN DIAM, BEARS N 9 1/2° W., 21.40' DIST., MARKED C/4 S26 B.T., A DOUGLAS FIR, 5" IN DIAM, BEARS N 84° E., 11.70' DIST., MARKED C/4 S26 B.T., A DOUGLAS FIR, 14" IN DIAM, BEARS S 8° W., 20' DIST., MARKED C/4 S26 B.T., A DOUGLAS FIR, 8" IN DIAM, BEARS N 78 1/2° W., MARKED C/4 B.T., ALL BEARING TREES TAGGED WITH NAIL AND BRASS WASHER STAMPED "WA 25893 - 2360." BEARING TREES ESTABLISHED WITH A STEEL TAPE AND HAND COMPASS.

CORNER CODE T-21

EAST 1/4 CORNER OF SECTION 26, AND WEST 1/4 CORNER OF SECTION 25

HISTORY: CORNER WAS ORIGINALLY ESTABLISHED, IN 1872, BY GEORGE WILLIAMS, U.S. DEPUTY SURVEYOR, UNDER G.L.O. CONTRACT NO. 176, AS A POST, FROM WHICH A TAMARACK, 12" IN DIAM, BEARS N 10° W., 65LKS (42.9') DIST., A FIR, 8" IN DIAM, BEARS S 20° E., 20 LKS (13.2') DIST.

EVIDENCE FOUND: NONE

CORNER PERPETUATION: SET A 1 1/2" GALVANIZED PIPE WITH 2 1/2" BRASS CAP STAMPED "T6N R37E 1/4 S26/S25 1996", WITH THE FOLLOWING BEARING TREES FOR ACCESSORIES; A DOUGLAS FIR, 27" IN DIAM, BEARS N 78°00' W., 32' DIST., MARKED 1/4 S26 B.T., A DOUGLAS FIR, 6" IN DIAM, BEARS N 66°00' E., 6.80' DIST., MARKED 1/4 S25 B.T., A DOUGLAS FIR, 12" IN DIAM, BEARS S 57°36'00" E., 23.80' DIST., MARKED 1/4 S25 B.T., A DOUGLAS FIR, 32" IN DIAM, BEARS S 2°58'00" W., 23' DIST., MARKED 1/4 S25 B.T., ALL BEARING TREES TAGGED WITH NAIL AND BRASS WASHER STAMPED "WA 25893 - OR 2360."

SET CORNER AS DESCRIBED ABOVE

LEGEND

- SURVEYED PROPERTY LINE
- UNSURVEYED PROPERTY LINE
- - - - SECTION OR SECTION SUBDIVISION LINE
- XXXXXX EXISTING FENCE LINE
- SURVEY MONUMENT, FOUND OR RE-ESTABLISHED FROM ORIGINAL EVIDENCE
- TAX LOT NUMBER
- SET SURVEY MONUMENT AS NOTED

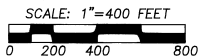
6840280.515.F.  
157.03 ACRES

REGISTERED PROFESSIONAL LAND SURVEYOR

OREGON JULY 26, 1988 PAUL W.P. TOMKINS 2360

RENEWS 12/31/00 2/15/96

EVIDENCE OF OLD E-W FENCE LEADING INTO THE SOUTH EAST CORNER OF SECTION 26.



CORNER CODE R-19

NORTH 1/4 CORNER OF SECTION 26, AND SOUTH 1/4 CORNER OF SECTION 23

HISTORY: CORNER WAS ORIGINALLY ESTABLISHED, IN 1872, BY GEORGE WILLIAMS, U.S. DEPUTY SURVEYOR, UNDER CONTRACT NO. 176, AS A ROCK 6X10X16, MOUND OF ROCK, WITH PITS.

THE BLM (BUREAU OF LAND MANAGEMENT) IN 1965 RESTORED THE 1872 SURVEY BY GEORGE WILLIAMS BY SETTING FOR THE CORNER A BRASS CAP STAMPED 1/4 S23/S26 T 6 N, R37 E 1965" IN MOUND OF STONE 4" SQUARE AND 2" HIGH, ORIGINAL BASALT STONE MARKED 1/4 ON ONE FACE LYING IN ROCK CRIB.

EVIDENCE FOUND: A BRASS CAP STAMPED 1/4 S.23/S.24 T 6 N R 37 E 1965" PROTRUDING 8" ABOVE GROUND, FENCE CORNER TO SOUTH AND WEST 4' SOUTHWEST.

CORNER PERPETUATION: NONE

CORNER CODE V-19

SOUTH 1/4 CORNER OF SECTION 26, AND NORTH 1/4 CORNER OF SECTION 35

HISTORY: CORNER WAS ORIGINALLY ESTABLISHED, IN 1872, BY GEORGE WILLIAMS, U.S. DEPUTY SURVEYOR, UNDER CONTRACT NO. 176, AS A POST, FROM WHICH A TAMARACK, 8" IN DIAM, BEARS S.13°E., 15 LKS. DIST, AND A RED FIR, 5" IN DIAM, BEARS N.2°W., 24 LKS. DIST.

EVIDENCE FOUND: THE ORIGINAL TAMARACK BEARING TREE, NOW 36" IN DIAMETER, BLAZED ON THE NORTH WEST SIDE AND WELL ROTTED, BEARS S.13°E. 9.90' DIST. FROM CORNER.

CORNER PERPETUATION: SET A 5/8" X 30" REBAR WITH 2" ALUMINUM CAP STAMPED "TOMKINS SURVEYING T. 6 N., R. 37E., W.M. SEC. 26 AND 35 1/4 1996" PROTRUDES 2" IN AN OLD N-S FENCE, USED THE FOLLOWING BEARING TREES FOR ACCESSORIES; A WHITE FIR, 14" IN DIAM, BEARS N.06°43'W., 30' DIST., AND A DOUG FIR, 12" IN DIAM, BEARS N.74°37'E., 44.2' DIST. BOTH TREES SCRIBED 1/4 B.T."

CORNER CODE R-21

N.E. CORNER OF SECTION 26, CORNER COMMON TO SECTIONS 23, 24, 25, AND 26.

HISTORY: CORNER WAS ORIGINALLY ESTABLISHED, IN 1872, BY GEORGE WILLIAMS, U.S. DEPUTY SURVEYOR, UNDER CONTRACT NO. 176, AS A POST, FROM WHICH WHITE FIR, 8" IN DIAM, BEARS S.13°E., 15 LKS. DIST., A WHITE FIR, 6" IN DIAM, BEARS S.45°W., 12 LKS. DIST., AND A FIR STUMP, 10" IN DIAM, BEARS N.27°W., 35 LKS. DIST.

THE BLM (BUREAU OF LAND MANAGEMENT) IN 1965 RESTORED THE 1872 SURVEY BY GEORGE WILLIAMS BY SETTING FOR THE CORNER A BRASS CAP STAMPED S 14 N R 37 E S23/S24 AND 23 1965" USED THE FOLLOWING BEARING TREES FOR ACCESSORIES; A FIR, 7" IN DIAM, BEARS N. 25 1/4°E., 47 LKS. DIST., MARKED T6N R37E S24 B.T., A FIR, 13" IN DIAM, BEARS S. 8 1/4° E., 30 LKS. DIST., MARKED T6N R37E S25 B.T., A FIR, 12" IN DIAM, BEARS S. 69° W., 43 LKS. DIST., MARKED T6N R37E S23 B.T., AND A FIR, 7" IN DIAM, BEARS N. 12° W., 42 LKS. DIST., MARKED T6N R37E S23 B.T.

EVIDENCE FOUND: STANDARD 3 1/4" BLM BRASS CAP ON 2 1/2" X 28" IRON POST, PROTRUDING 4", STAMPED "T6N R37E S 23, 24, 26, AND 25, 1965" WITH THE FOLLOWING BEARING TREES FOR ACCESSORIES; THE N.E., S.E., AND S.W., BLM BEARING TREES.

CORNER PERPETUATION: NONE

CORNER CODE V-21

S.E. CORNER OF SECTION 26, CORNER COMMON TO SECTIONS 25, 26, 35, AND 36.

HISTORY: CORNER WAS ORIGINALLY ESTABLISHED, IN 1872, BY GEORGE WILLIAMS, U.S. DEPUTY SURVEYOR, UNDER G.L.O. CONTRACT NO. 176, AS A POST, FROM WHICH A WHITE FIR, 6" IN DIAM, BEARS N. 16° E., 8 LKS. DIST., A WHITE FIR, 9" IN DIAM, BEARS N. 11° W., 29 LKS. DIST., A WHITE FIR, 5" IN DIAM, BEARS S. 15° W., 14 LKS. DIST., AND A WHITE FIR, 8" IN DIAM, BEARS S. 10° E., 27 LKS. DIST.

THE CORNER WAS RE-WITNESSED IN 1956, BY BERT W. UDELL ENGINEER/SURVEYOR, FOUND ORIGINAL BEARING TREES AS DESCRIBED; A WHITE FIR, 6" IN DIAM, BEARS N 16° E., 5.3' DIST., NOW GREEN 28" IN DIAM, OLD SCAR CHOPPED OUT, NO SCRIBING VISIBLE, A WHITE FIR, 9" IN DIAM, BEARS N 11° W., 19.1' DIST., NOW 27" IN DIAM, SCRIBE IS VISIBLE, A WHITE FIR, 5" IN DIAM, BEARS S 15° W., 9.2' DIST., NOW 29" SNAG AND A WHITE FIR, 8" IN DIAM, BEARS S 10° E., 12.8' DIST., GONE. SET 3/8" RE-INFORCING BAR FOR THIS CORNER.

EVIDENCE FOUND: A 30" FIR SNAG, ROTTEN, OPEN BLAZE-SCRIBE ROTTED OUT. (NORTHEAST BEARING TREE.)

CORNER PERPETUATION: SET A 5/8" X 30" REBAR WITH 2" ALUMINUM CAP STAMPED "TOMKINS SURVEYING T. 6 N., R. 37E., W.M. SEC. 26, 35 & 36 1996" FLUSH WITH ROAD, WE SET THE CAP 3/16" 8.3" FROM FACE OF BLAZE, USED THE FOLLOWING BEARING TREES FOR ACCESSORIES; A DOUG FIR, 10" IN DIAM, BEARS S.4°W., 14.1' DIST., AND A DOUG FIR, 17" IN DIAM, BEARS N.9°30'W., 46.5' DIST., ATTACHED BEARING TREE TAGS ON TREES DO NOT SCRIBE. CORNER FALLS 40' WEST OF NORTH-SOUTH FENCE LINE EAST ALONG ROAD.

A SURVEY IN SECTION 26, T.6N., R.37E., WILLAMETTE MERIDIAN, IN UMATILLA COUNTY, OREGON

FOR: MONTY THOMAS, RT. 2, BOX 192, MILTON FREEWATER, OR 97062

PAUL W.P. TOMKINS, LAND SURVEYOR  
 6 1/2 N. SECOND SUITE 303  
 WALLA WALLA, WA. 99362  
 (509) 522-4843

DATE: FEB. 1996  
 SCALE: 1"=400'

7-99  
 KK  
 99-121-B

MTHOMAS.DWG