

TOWNSHIP I NORTH, RANGE 36 EAST, OF THE WILLAMETTE MERIDIAN, OREGON

CORRECTIVE DEPENDENT RESURVEY, DEPENDENT RESURVEY, SUBDIVISION OF SECTIONS AND SURVEY

A history of surveys is contained in the field notes.

This plat represents a corrective dependent resurvey of the mile between sections 34 and 35, a dependent resurvey of portions of the east, west and north boundaries and subdivisional lines, T. 1 N., R. 36 E., Willamette Meridian, Oregon, designed to restore the corners in their true original locations according to the best available evidence, and the subdivision of sections 4, 5, 6, 9, 15, 16, 21, 22, 25, 26, 27 and 34, and the metes-and-bounds survey of portions of the westerly right-of-way of the Union Pacific Railroad in sections 27, 34 and 35.

Portions of the measured distances and directions have been adjusted by Cadastral Measurement Management (CMM), computer software that incorporates a least squares adjustment routine. The adjusted bearings and distances are reported to the nearest second and 0.001 chain.

Except as shown hereon, the lottings and areas are as shown on the plat approved March 31, 1883.

The survey was executed by Richard S. Kaiser, Phillip G. Griffin and Bryan S. Seibold, Cadastral Surveyors, beginning May 13, 1997, and completed October 13, 1999, pursuant to Special Instructions dated May 9, 1997 and Supplemental Special Instructions dated September 8, 1999, under Group Number 1844, Oregon.

Timber in this area consists of fir, pine and larch.

The tie to the geodetic control station is reported as mean bearing and sea level distance.

At the request of the U.S. Forest Service, the true area for each quarter-quarter section is reported for all lands under their jurisdiction. Where the true area is within 5% of the record area, the quarter-quarter section will retain its aliquot part designation even though the area changes. The quarter-quarter section will continue to be divided by legal subdivision. Where the record area changes by more than 5% or the quarter-quarter section is badly distorted, it has been assigned a lot number and may be further divided only by supplemental plat. (SEE SHEET 2)

LEGEND

- ◆ Original corner previously remonumented
- ◇ Original corner remonumented this survey
- Corner previously established or reestablished
- Corner established or reestablished this survey

UNITED STATES DEPARTMENT OF THE INTERIOR
BUREAU OF LAND MANAGEMENT

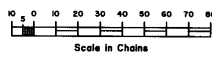
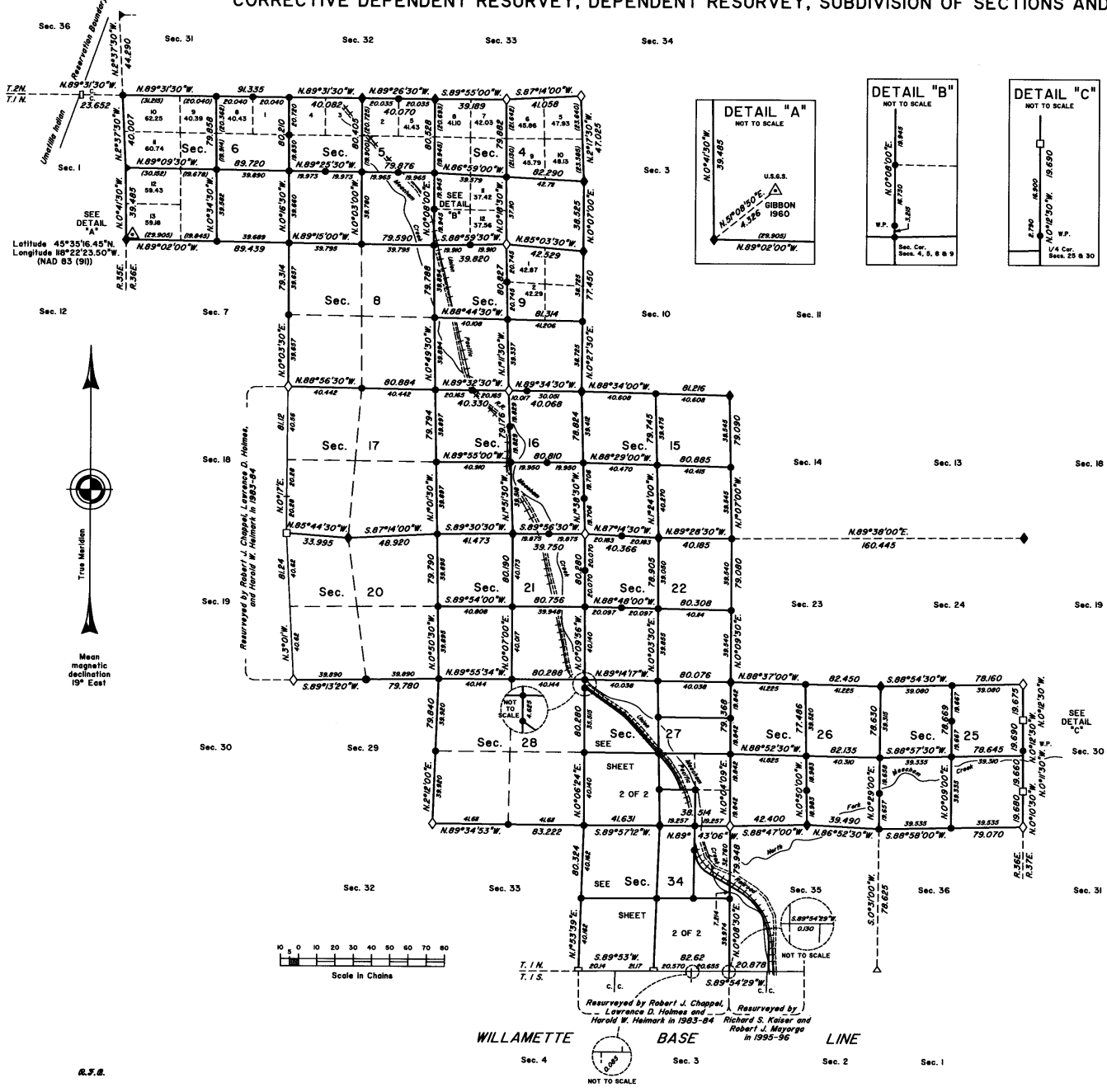
Portland, Oregon March 17, 2000

This plat is strictly conformable to the approved field notes, and the survey, having been correctly executed in accordance with the requirements of law and the regulations of this Bureau, is hereby accepted.

For the Director

Raymond Paulsen
Chief Cadastral Surveyor of Oregon

RECEIVED BY
Umatilla County Surveyors
Date 5-20-00
Rec'd By [Signature]
No. 00-710-B



R.F.B.

TOWNSHIP I NORTH, RANGE 36 EAST, OF THE WILLAMETTE MERIDIAN, OREGON

SHEET 2 OF 2

CORRECTIVE DEPENDENT RESURVEY, DEPENDENT RESURVEY, SUBDIVISION OF SECTIONS AND SURVEY

LEGAL SUBDIVISION	OFFICIAL AREA
SECTION 4	
NE 1/4 SE 1/4	40.64 Acres
SE 1/4 SE 1/4	40.50 Acres
SW 1/4 SE 1/4	39.74 Acres
NW 1/4 SE 1/4	39.87 Acres
NW 1/4 SW 1/4	38.60 Acres
SE 1/4 NW 1/4	41.08 Acres
SW 1/4 NW 1/4	39.92 Acres

LEGAL SUBDIVISION	OFFICIAL AREA
SECTION 5	
SE 1/4 NE 1/4	39.83 Acres
NE 1/4 SE 1/4	39.76 Acres
SE 1/4 SE 1/4	39.85 Acres
SW 1/4 SE 1/4	39.63 Acres
NW 1/4 SE 1/4	39.70 Acres
NE 1/4 SW 1/4	39.66 Acres
SE 1/4 SW 1/4	39.58 Acres
SW 1/4 SW 1/4	39.52 Acres
NW 1/4 SW 1/4	39.60 Acres
SW 1/4 NW 1/4	39.67 Acres

LEGAL SUBDIVISION	OFFICIAL AREA
SECTION 27	
NE 1/4 NE 1/4	39.59 Acres
NW 1/4 NE 1/4	39.70 Acres
SW 1/4 SE 1/4	38.47 Acres
NE 1/4 SW 1/4	40.86 Acres
SE 1/4 SW 1/4	41.31 Acres
SW 1/4 SW 1/4	41.49 Acres
NW 1/4 SW 1/4	41.09 Acres
SW 1/4 NW 1/4	40.72 Acres

LEGEND

- ◇ Original corner previously monumented
- ◆ Original corner monumented this survey
- Corner previously established or reestablished
- Corner established or reestablished this survey

LEGAL SUBDIVISION	OFFICIAL AREA
SECTION 6	
SE 1/4 NE 1/4	39.63 Acres
SW 1/4 NE 1/4	39.71 Acres
NE 1/4 SE 1/4	39.47 Acres
SE 1/4 SE 1/4	39.37 Acres
SW 1/4 SE 1/4	39.33 Acres
NW 1/4 SE 1/4	39.43 Acres
NE 1/4 SW 1/4	38.97 Acres
SE 1/4 SW 1/4	39.15 Acres
SE 1/4 NW 1/4	39.33 Acres

LEGAL SUBDIVISION	OFFICIAL AREA
SECTION 9	
NE 1/4 NE 1/4	41.46 Acres
SE 1/4 NE 1/4	40.98 Acres
NE 1/4 SE 1/4	39.76 Acres
SE 1/4 SE 1/4	39.21 Acres
SW 1/4 SE 1/4	39.51 Acres
NW 1/4 SE 1/4	40.06 Acres
NE 1/4 NW 1/4	40.97 Acres

LEGAL SUBDIVISION	OFFICIAL AREA
SECTION 15	
NE 1/4 NE 1/4	40.04 Acres
SE 1/4 NE 1/4	39.94 Acres
SW 1/4 NE 1/4	39.90 Acres
NW 1/4 NE 1/4	40.00 Acres
NE 1/4 SE 1/4	40.05 Acres
SE 1/4 SE 1/4	39.94 Acres
SW 1/4 SE 1/4	40.31 Acres
NW 1/4 SE 1/4	40.41 Acres
NE 1/4 SW 1/4	40.43 Acres
SE 1/4 SW 1/4	40.36 Acres
NW 1/4 SW 1/4	39.99 Acres
NE 1/4 NW 1/4	39.98 Acres
SE 1/4 NW 1/4	39.90 Acres
SW 1/4 NW 1/4	39.87 Acres
NW 1/4 NW 1/4	39.94 Acres

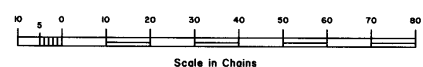
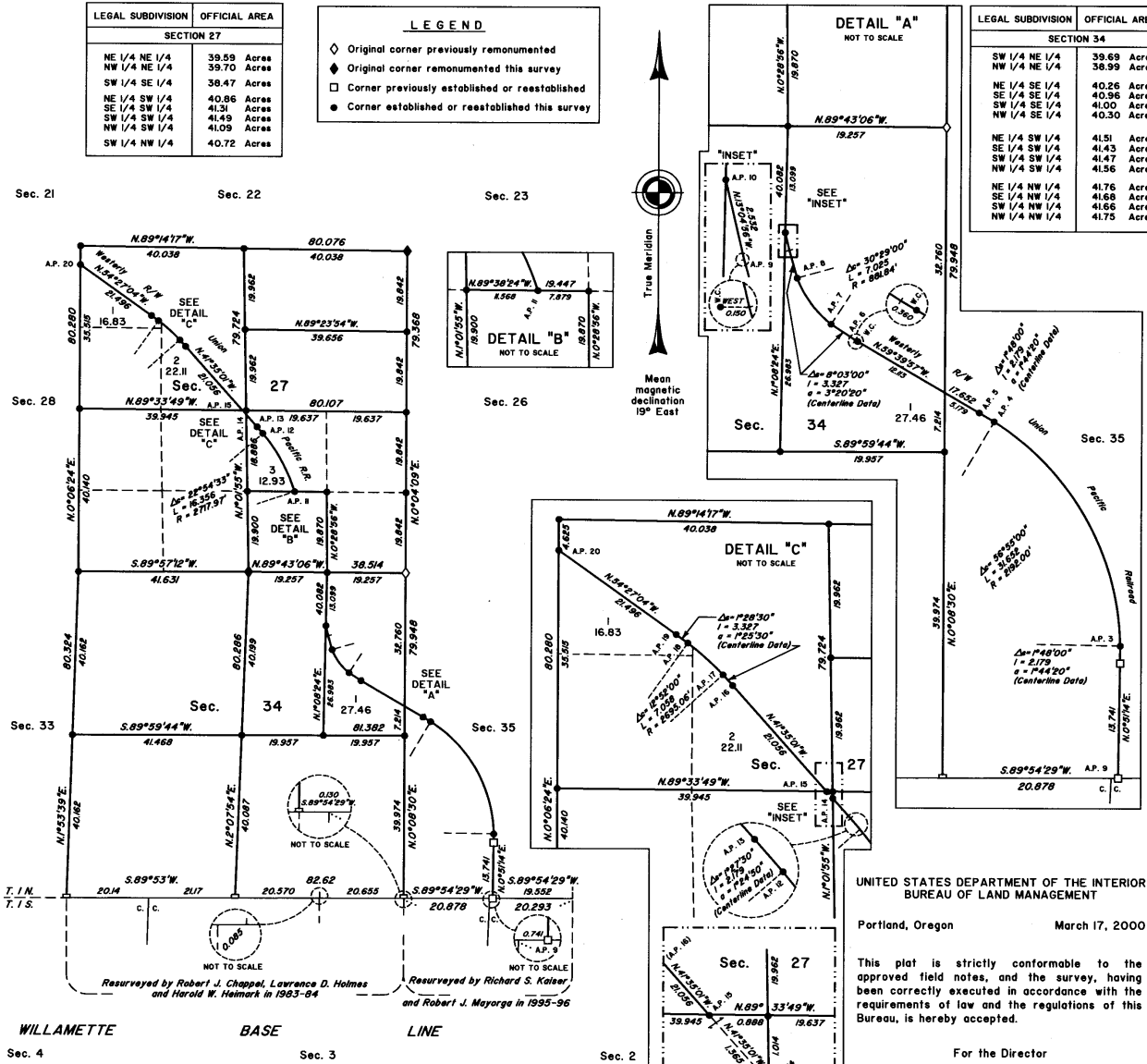
LEGAL SUBDIVISION	OFFICIAL AREA
SECTION 16	
NE 1/4 NE 1/4	39.47 Acres
SE 1/4 NE 1/4	39.40 Acres
E 1/2 NW 1/4 NE 1/4	19.78 Acres
NE 1/4 SE 1/4	39.28 Acres
NE 1/4 SW 1/4	40.63 Acres
SE 1/4 SW 1/4	40.92 Acres
SW 1/4 SW 1/4	41.3 Acres
NW 1/4 SW 1/4	40.84 Acres
NE 1/4 NW 1/4	40.45 Acres
SW 1/4 NW 1/4	40.59 Acres
NW 1/4 NW 1/4	40.30 Acres

LEGAL SUBDIVISION	OFFICIAL AREA
SECTION 21	
SE 1/4 NE 1/4	40.05 Acres
SW 1/4 NE 1/4	40.06 Acres
NW 1/4 NE 1/4	39.96 Acres
NE 1/4 SE 1/4	40.11 Acres
SE 1/4 SE 1/4	40.20 Acres
SW 1/4 SE 1/4	40.14 Acres
NW 1/4 SE 1/4	40.05 Acres
NE 1/4 SW 1/4	40.63 Acres
SE 1/4 SW 1/4	40.29 Acres
SW 1/4 SW 1/4	40.23 Acres
NW 1/4 SW 1/4	40.56 Acres
NE 1/4 NW 1/4	41.43 Acres
SE 1/4 NW 1/4	41.08 Acres
SW 1/4 NW 1/4	40.18 Acres
NW 1/4 NW 1/4	41.27 Acres

LEGAL SUBDIVISION	OFFICIAL AREA
SECTION 22	
NE 1/4 NE 1/4	39.58 Acres
SE 1/4 NE 1/4	39.54 Acres
SW 1/4 NE 1/4	39.30 Acres
NW 1/4 NE 1/4	39.34 Acres
NE 1/4 SE 1/4	39.71 Acres
SE 1/4 SE 1/4	39.67 Acres
SW 1/4 SE 1/4	39.83 Acres
NW 1/4 SE 1/4	39.86 Acres
NE 1/4 SW 1/4	40.07 Acres
SE 1/4 SW 1/4	39.99 Acres
SW 1/4 SW 1/4	40.14 Acres
NW 1/4 SW 1/4	40.22 Acres
NE 1/4 NW 1/4	39.60 Acres
SE 1/4 NW 1/4	39.53 Acres

LEGAL SUBDIVISION	OFFICIAL AREA
SECTION 25	
NE 1/4 NE 1/4	38.49 Acres
NW 1/4 NE 1/4	38.48 Acres
NE 1/4 NW 1/4	38.48 Acres
SE 1/4 NW 1/4	38.60 Acres
SW 1/4 NW 1/4	38.59 Acres
NW 1/4 NW 1/4	38.47 Acres

LEGAL SUBDIVISION	OFFICIAL AREA
SECTION 26	
NE 1/4 NE 1/4	40.34 Acres
SE 1/4 NE 1/4	39.89 Acres
SW 1/4 NE 1/4	39.98 Acres
NW 1/4 NE 1/4	40.43 Acres
NE 1/4 SE 1/4	39.07 Acres
NW 1/4 SE 1/4	38.37 Acres
NE 1/4 SW 1/4	40.27 Acres
SE 1/4 SW 1/4	40.56 Acres
SW 1/4 SW 1/4	41.46 Acres
NW 1/4 SW 1/4	41.17 Acres
NE 1/4 NW 1/4	40.89 Acres
SE 1/4 NW 1/4	41.20 Acres
SW 1/4 NW 1/4	41.29 Acres
NW 1/4 NW 1/4	40.99 Acres



UNITED STATES DEPARTMENT OF THE INTERIOR
BUREAU OF LAND MANAGEMENT
Portland, Oregon March 17, 2000

This plat is strictly conformable to the approved field notes, and the survey, having been correctly executed in accordance with the requirements of law and the regulations of this Bureau, is hereby accepted.

For the Director
Deputy Director
Chief Cadastral Surveyor of Oregon

RECEIVED BY
Multnomah County Surveyor
Date: 5-20-00
By: [Signature]
00-410-B