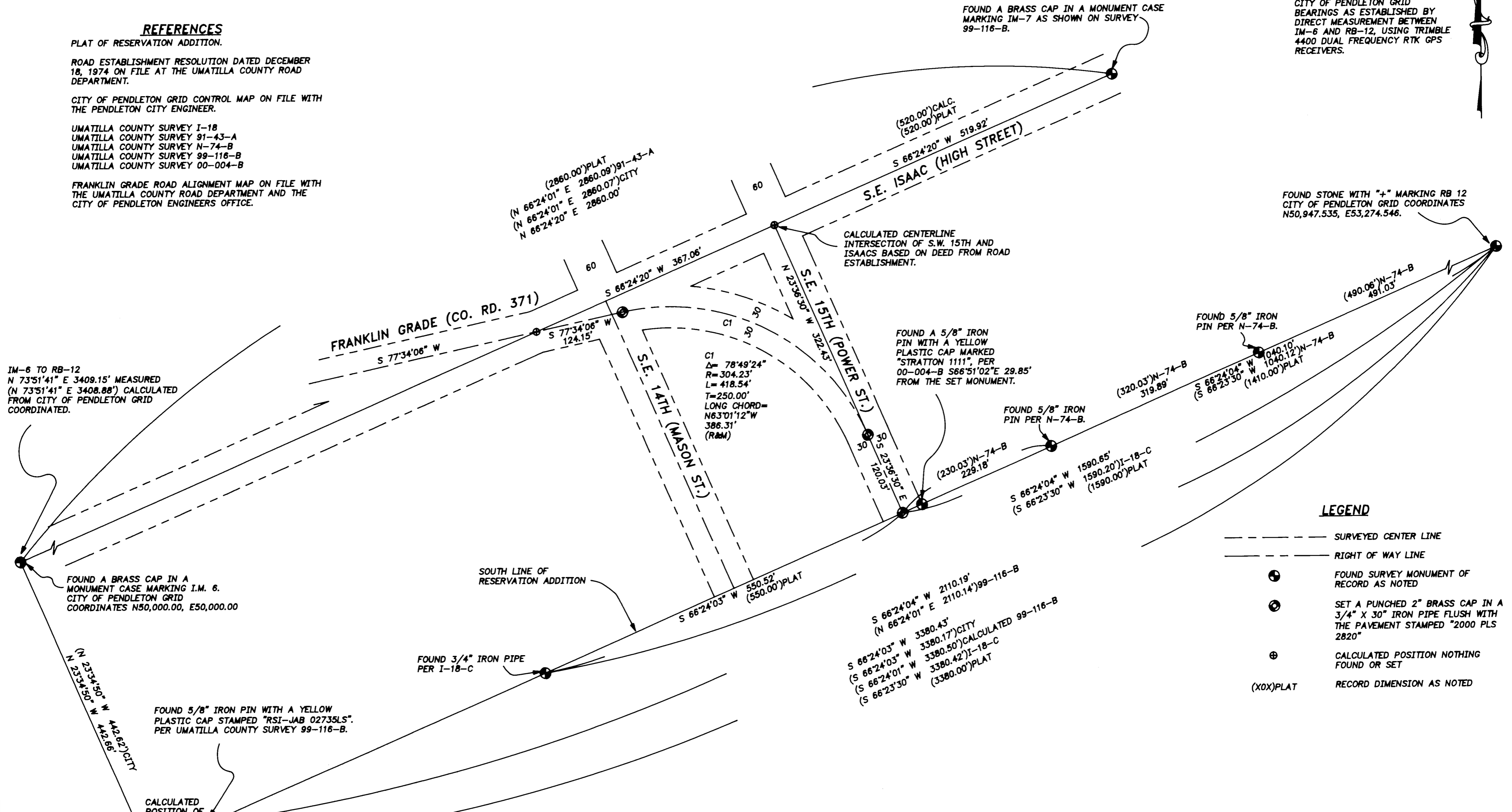


**REFERENCES**

PLAT OF RESERVATION ADDITION.  
 ROAD ESTABLISHMENT RESOLUTION DATED DECEMBER 18, 1974 ON FILE AT THE UMATILLA COUNTY ROAD DEPARTMENT.  
 CITY OF PENDLETON GRID CONTROL MAP ON FILE WITH THE PENDLETON CITY ENGINEER.  
 UMATILLA COUNTY SURVEY I-18  
 UMATILLA COUNTY SURVEY 91-43-A  
 UMATILLA COUNTY SURVEY N-74-B  
 UMATILLA COUNTY SURVEY 99-116-B  
 UMATILLA COUNTY SURVEY 00-004-B  
 FRANKLIN GRADE ROAD ALIGNMENT MAP ON FILE WITH THE UMATILLA COUNTY ROAD DEPARTMENT AND THE CITY OF PENDLETON ENGINEERS OFFICE.

**BASIS OF BEARINGS**  
 CITY OF PENDLETON GRID BEARINGS AS ESTABLISHED BY DIRECT MEASUREMENT BETWEEN IM-6 AND RB-12, USING TRIMBLE 4400 DUAL FREQUENCY RTK GPS RECEIVERS.



IM-6 TO RB-12  
 N 73°51'41\" E 3409.15' MEASURED  
 (N 73°51'41\" E 3408.88') CALCULATED  
 FROM CITY OF PENDLETON GRID COORDINATED.

FOUND A BRASS CAP IN A MONUMENT CASE MARKING I.M. 6. CITY OF PENDLETON GRID COORDINATES N50,000.00, E50,000.00

FOUND 5/8\" IRON PIN WITH A YELLOW PLASTIC CAP STAMPED \"RSI-JAB 02735LS\". PER UMATILLA COUNTY SURVEY 99-116-B.

CALCULATED POSITION OF RB-10

RB-10, NOT RECOVERED AT THE TIME OF THIS SURVEY POSITION CALCULATED BY PROJECTING LINE FROM RB-12 THROUGH THE FOUND PINS ON THE SOUTH LINE OF RESERVATION ADDITION TO AN INTERSECTION WITH A LINE DRAWN S23°34'50\"E FROM IM-6 AS CALCULATED FROM CITY OF PENDLETON GRID COORDINATES.

SOUTH LINE OF RESERVATION ADDITION

FOUND 3/4\" IRON PIPE PER I-18-C

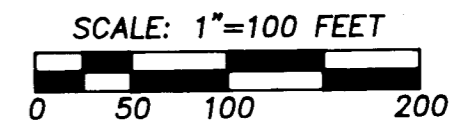
**NARRATIVE**

THIS SURVEY WAS PERFORMED AT THE REQUEST OF TEKTONICS CORPORATION TO SURVEY AND MONUMENT THE SOUTH END OF FRANKLIN GRADE IN CONJUNCTION WITH STREET IMPROVEMENTS MADE IN THE AREA OF THE HOMESTEAD YOUTH LODGE. ACCORDING TO THE CITY OF PENDLETON ENGINEERING DEPARTMENT, THE DESCRIPTION SHOWN IN THE ROAD ESTABLISHMENT RESOLUTION WAS CREATED BY THE CITY AND THE BASIS OF BEARINGS FOR THE SURVEY WAS THE CITY OF PENDLETON GRID BEARINGS. THEREFORE, HAVING BASED THIS SURVEY ON CITY OF PENDLETON GRID BEARINGS I HAVE HELD THE RECORD BEARINGS FOR THE CENTERLINE OF S.W. 15TH AS CALLED OUT IN THE RESOLUTION. THE CENTERLINE OF S.E. 15TH (POWER STREET) AT THE SOUTH LINE OF THE RESERVATION ADDITION WAS CALCULATED AT THE PROPORTIONED DISTANCE ALONG SAID SOUTH LINE FROM THE FOUND MONUMENT AT RB-12 AND THE COMPUTED POSITION OF RB-10, HOLDING THE FOUND PINS AND PIPES ALONG THE SOUTH LINE AS DELINEATING THE ALIGNMENT THEREOF. A NORTHWESTERLY PROLONGATION OF THE CENTERLINE OF S.W. 15TH TO AN INTERSECTION WITH THE CENTERLINE OF ISAAC'S (HIGH STREET) YIELDS A POSITION THAT IS WITHIN 0.08' OF THE PROPORTIONED LOCATION SAID INTERSECTION BASED ON THE LINE BETWEEN IM-6 AND IM-7. HOWEVER, SINCE IM-7 HAS BEEN REPLACED SINCE THE TIME OF THE SURVEY ESTABLISHING THE ALIGNMENT OF FRANKLIN GRADE, AND IT APPEARS TO BE IN A SLIGHTLY DIFFERENT LOCATION THAN THE ORIGINAL I HAVE HELD THE LOCATION PER THE ESTABLISHMENT RATHER THAN THE PROPORTIONED LOCATION.

THIS SURVEY WAS PERFORMED USING TRIMBLE 4400 DUAL FREQUENCY RTK GPS RECEIVERS HAVING STANDARD ERRORS OF 1 CM + 2PPM TIMES BASELINE LENGTH. THE BASE RECEIVER WAS LOCATED APPROXIMATELY MIDWAY BETWEEN IM-6 AND RB-15. ALL MONUMENTS SHOWN WERE VISITED AT THE TIME OF THIS SURVEY IN NOVEMBER AND DECEMBER 2000.

S 66°24'04\" W 2110.19'  
 (N 66°24'01\" E 2110.14')99-116-B  
 S 66°24'03\" W 3380.43'  
 (S 66°24'03\" W 3380.17')CITY  
 (S 66°24'01\" W 3380.50')CALCULATED 99-116-B  
 (S 66°23'30\" W 3380.42')I-18-C  
 (S 66°23'30\" W 3380.00')PLAT

- LEGEND**
- SURVEYED CENTER LINE
  - RIGHT OF WAY LINE
  - ⊕ FOUND SURVEY MONUMENT OF RECORD AS NOTED
  - ⊙ SET A PUNCHED 2\" BRASS CAP IN A 3/4\" X 30\" IRON PIPE FLUSH WITH THE PAVEMENT STAMPED \"2000 PLS 2820\"
  - ⊕ CALCULATED POSITION NOTHING FOUND OR SET
  - (XOX)PLAT RECORD DIMENSION AS NOTED



REGISTERED PROFESSIONAL LAND SURVEYOR

*Greg E. Flowers*  
 OREGON  
 JUNE 30, 1997  
 GREG E. FLOWERS  
 02B20LS

RENEWS 12/31/01  
 12/19/00

A SURVEY OF THE CENTERLINE OF THE SOUTHEASTERLY PORTION OF FRANKLIN GRADE. LOCATED IN THE S.E. 1/4 OF THE N.E. 1/4 OF TWP. 2 NORTH, RGE. 32 EAST, W.M., CITY OF PENDLETON, UMATILLA COUNTY, OREGON  
 FOR: TEKTONICS CORPORATION, 306 MOORE STREET WALLA WALLA, WASHINGTON 99362

TOMKINS LAND SURVEYING, INC.  
 20 EAST POPLAR ST. SUITE 204  
 WALLA WALLA, WA. 99362  
 (509) 522-4843  
 115 WEST HERMISTON AV. SUITE 140  
 HERMISTON, OR. 97838  
 (541) 564-4448 SW15PEND.DWG

DATE  
 DECEMBER, 2000  
 SCALE  
 1\"=100'

RECEIVED BY  
 Umatilla County Surveyors  
 Date 01-01  
 Rec'd By KR  
 No. 01-03-B

01-003-B