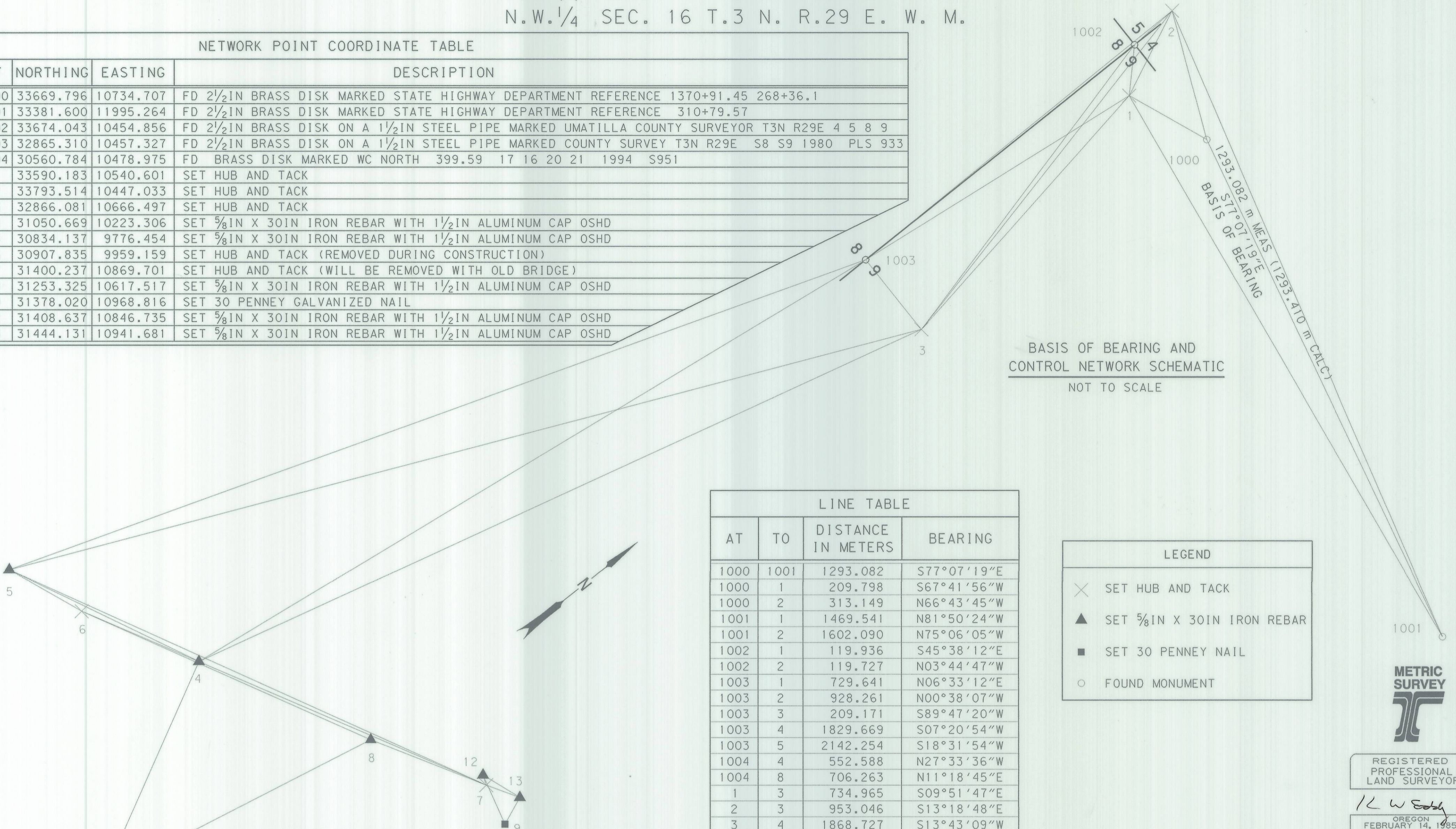


S.E. 1/4 SEC. 17 T.3 N. R.29 E. W. M.
 N.W. 1/4 SEC. 16 T.3 N. R.29 E. W. M.

NETWORK POINT COORDINATE TABLE

PT	NORTHING	EASTING	DESCRIPTION
1000	33669.796	10734.707	FD 2 1/2 IN BRASS DISK MARKED STATE HIGHWAY DEPARTMENT REFERENCE 1370+91.45 268+36.1
1001	33381.600	11995.264	FD 2 1/2 IN BRASS DISK MARKED STATE HIGHWAY DEPARTMENT REFERENCE 310+79.57
1002	33674.043	10454.856	FD 2 1/2 IN BRASS DISK ON A 1 1/2 IN STEEL PIPE MARKED UMATILLA COUNTY SURVEYOR T3N R29E 4 5 8 9
1003	32865.310	10457.327	FD 2 1/2 IN BRASS DISK ON A 1 1/2 IN STEEL PIPE MARKED COUNTY SURVEY T3N R29E S8 S9 1980 PLS 933
1004	30560.784	10478.975	FD BRASS DISK MARKED WC NORTH 399.59 17 16 20 21 1994 S951
1	33590.183	10540.601	SET HUB AND TACK
2	33793.514	10447.033	SET HUB AND TACK
3	32866.081	10666.497	SET HUB AND TACK
4	31050.669	10223.306	SET 5/8 IN X 30 IN IRON REBAR WITH 1 1/2 IN ALUMINUM CAP OSHD
5	30834.137	9776.454	SET 5/8 IN X 30 IN IRON REBAR WITH 1 1/2 IN ALUMINUM CAP OSHD
6	30907.835	9959.159	SET HUB AND TACK (REMOVED DURING CONSTRUCTION)
7	31400.237	10869.701	SET HUB AND TACK (WILL BE REMOVED WITH OLD BRIDGE)
8	31253.325	10617.517	SET 5/8 IN X 30 IN IRON REBAR WITH 1 1/2 IN ALUMINUM CAP OSHD
9	31378.020	10968.816	SET 30 PENNEY GALVANIZED NAIL
12	31408.637	10846.735	SET 5/8 IN X 30 IN IRON REBAR WITH 1 1/2 IN ALUMINUM CAP OSHD
13	31444.131	10941.681	SET 5/8 IN X 30 IN IRON REBAR WITH 1 1/2 IN ALUMINUM CAP OSHD

BASIS OF BEARING AND CONTROL NETWORK SCHEMATIC
 NOT TO SCALE



LINE TABLE

AT	TO	DISTANCE IN METERS	BEARING
1000	1001	1293.082	S77°07'19"E
1000	1	209.798	S67°41'56"W
1000	2	313.149	N66°43'45"W
1001	1	1469.541	N81°50'24"W
1001	2	1602.090	N75°06'05"W
1002	1	119.936	S45°38'12"E
1002	2	119.727	N03°44'47"W
1003	1	729.641	N06°33'12"E
1003	2	928.261	N00°38'07"W
1003	3	209.171	S89°47'20"W
1003	4	1829.669	S07°20'54"W
1003	5	2142.254	S18°31'54"W
1004	4	552.588	N27°33'36"W
1004	8	706.263	N11°18'45"E
1	3	734.965	S09°51'47"E
2	3	953.046	S13°18'48"E
3	4	1868.727	S13°43'09"W
3	5	2218.327	S23°39'17"W
4	5	496.551	S64°08'47"W
4	6	300.292	S61°35'54"W
4	7	734.863	N61°35'44"E
4	8	443.251	N62°47'36"E
5	6	197.009	N68°01'56"E
5	7	1231.121	N62°37'27"E
5	8	939.737	N63°30'30"E
6	7	1035.155	N61°35'47"E
6	8	743.504	N62°18'38"E
7	8	291.856	S59°46'36"W
7	12	27.454	N69°54'35"W
7	13	84.308	N58°37'29"E
9	12	125.862	N75°55'16"W
9	13	71.463	N22°18'56"W
12	13	101.364	N69°30'09"E

NARRATIVE

HORIZONTAL CONTROL WAS ESTABLISHED BY NETWORKING AND LEAST SQUARES REDUCTION. BASIS OF BEARING (S 77°07'19") WAS ESTABLISHED BY USING TWO BRASS DISKS LOCATED ON THE COMMON CENTERLINE OF I-84 NEAR THE STANFIELD INTERCHANGE. THE FIRST DISK NOTED AS POINT 1000 IS LOCATED AT THE EQUATION STATION (ENGLISH) 1379+91.45 = 268+36.10 (METRIC). THE SECOND BRASS DISK AT STATION (ENGLISH) 310+79.57 IS POINT 1001. BOTH DISKS ARE 65 FT. OFFSET FROM THE WEST BOUND CENTERLINE AS NOTED ON ODOT MAP 8B-34-18 1 OF 4. COORDINATE VALUES FOR POINT 1000 WERE ASSUMED. COORDINATE VALUES FOR POINT 1001 WERE CALCULATED USING RECORDED BEARING AND MEASURED DISTANCE. SECTION CORNER 4 5 8 9 OF T3N R29E WM, A BRASS DISK, WAS TIED AS POINT 1002. A SECOND DISK AT THE SW CORNER OF THE NW 1/4 OF SECTION 9 (THIS DISK SHOWED SIGNS THAT IT MAY HAVE BEEN DISTURBED) WAS TIED AS POINT 1003. A THIRD DISK, MARKED WC NORTH 399.59 17 16 20 21 1994 S951, WAS TIED AS POINT 1004. THE NETWORK MEETS OSHD STANDARDS. NETWORKING AND MAPPING WAS ACCOMPLISHED WITH A WILD T-1610. THE NETWORK WAS ESTABLISHED PRIMARILY BY RICK HART, KEN FICKEL, AND BRENT MERRIMAN.

ALL CENTERLINE ALIGNMENT INFORMATION WAS OBTAINED FROM OREGON DEPARTMENT OF TRANSPORTATION RIGHT OF WAY MAP 10B-11-10

ALL RIGHT OF WAY WAS SET FROM EXISTING NETWORK POINTS AND VERIFIED USING OSHD STANDARD PROCEDURES. RIGHT OF WAY WAS SET PRIMARILY BY CHUCK LONGFIELD AND TOM HUEBNER.

LEGEND

- ✕ SET HUB AND TACK
- ▲ SET 5/8 IN X 30 IN IRON REBAR
- SET 30 PENNEY NAIL
- FOUND MONUMENT



REGISTERED PROFESSIONAL LAND SURVEYOR

Ken W. Eddy
 OREGON
 FEBRUARY 14, 1985
 KEN W. EDDY
 2129

EXPIRES 12/31/01

TO CONVERT METERS TO FEET DIVIDE BY 0.3048

OREGON DEPARTMENT OF TRANSPORTATION

HORIZONTAL CONTROL, RECOVERY, RETRACEMENT,

AND RIGHT-OF-WAY MONUMENTATION MAP

RECEIVED BY
 Umatilla County Surveyor
 LEXINGTON-ECHO HWY BRIDGES
 LEXINGTON ECHO HWY
 UMATILLA COUNTY

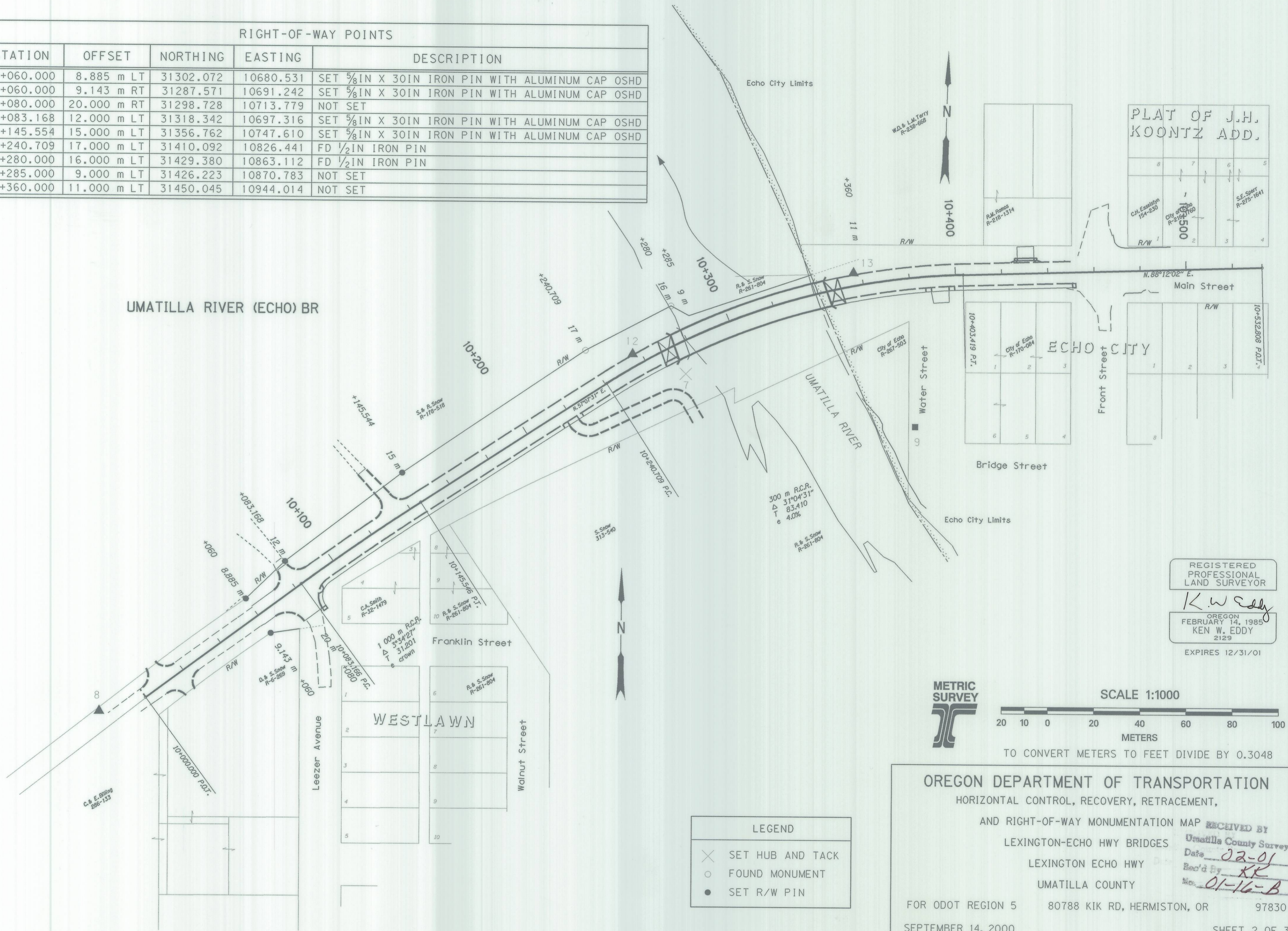
FOR ODOT REGION 5 80788 KIK RD, HERMISTON, OR 97830

SEPTEMBER 14, 2000

SHEET 1 OF 3

S.E. 1/4 SEC. 17 T.3 N. R.29 E. W. M.
 N.W. 1/4 SEC. 16 T.3 N. R.29 E. W. M.

RIGHT-OF-WAY POINTS				
STATION	OFFSET	NORTHING	EASTING	DESCRIPTION
10+060.000	8.885 m LT	31302.072	10680.531	SET 5/8 IN X 30 IN IRON PIN WITH ALUMINUM CAP OSHD
10+060.000	9.143 m RT	31287.571	10691.242	SET 5/8 IN X 30 IN IRON PIN WITH ALUMINUM CAP OSHD
10+080.000	20.000 m RT	31298.728	10713.779	NOT SET
10+083.168	12.000 m LT	31318.342	10697.316	SET 5/8 IN X 30 IN IRON PIN WITH ALUMINUM CAP OSHD
10+145.554	15.000 m LT	31356.762	10747.610	SET 5/8 IN X 30 IN IRON PIN WITH ALUMINUM CAP OSHD
10+240.709	17.000 m LT	31410.092	10826.441	FD 1/2 IN IRON PIN
10+280.000	16.000 m LT	31429.380	10863.112	FD 1/2 IN IRON PIN
10+285.000	9.000 m LT	31426.223	10870.783	NOT SET
10+360.000	11.000 m LT	31450.045	10944.014	NOT SET



REGISTERED
 PROFESSIONAL
 LAND SURVEYOR
K.W. Eddy
 OREGON
 FEBRUARY 14, 1985
 KEN W. EDDY
 2129
 EXPIRES 12/31/01



SCALE 1:1000
 20 10 0 20 40 60 80 100
 METERS
 TO CONVERT METERS TO FEET DIVIDE BY 0.3048

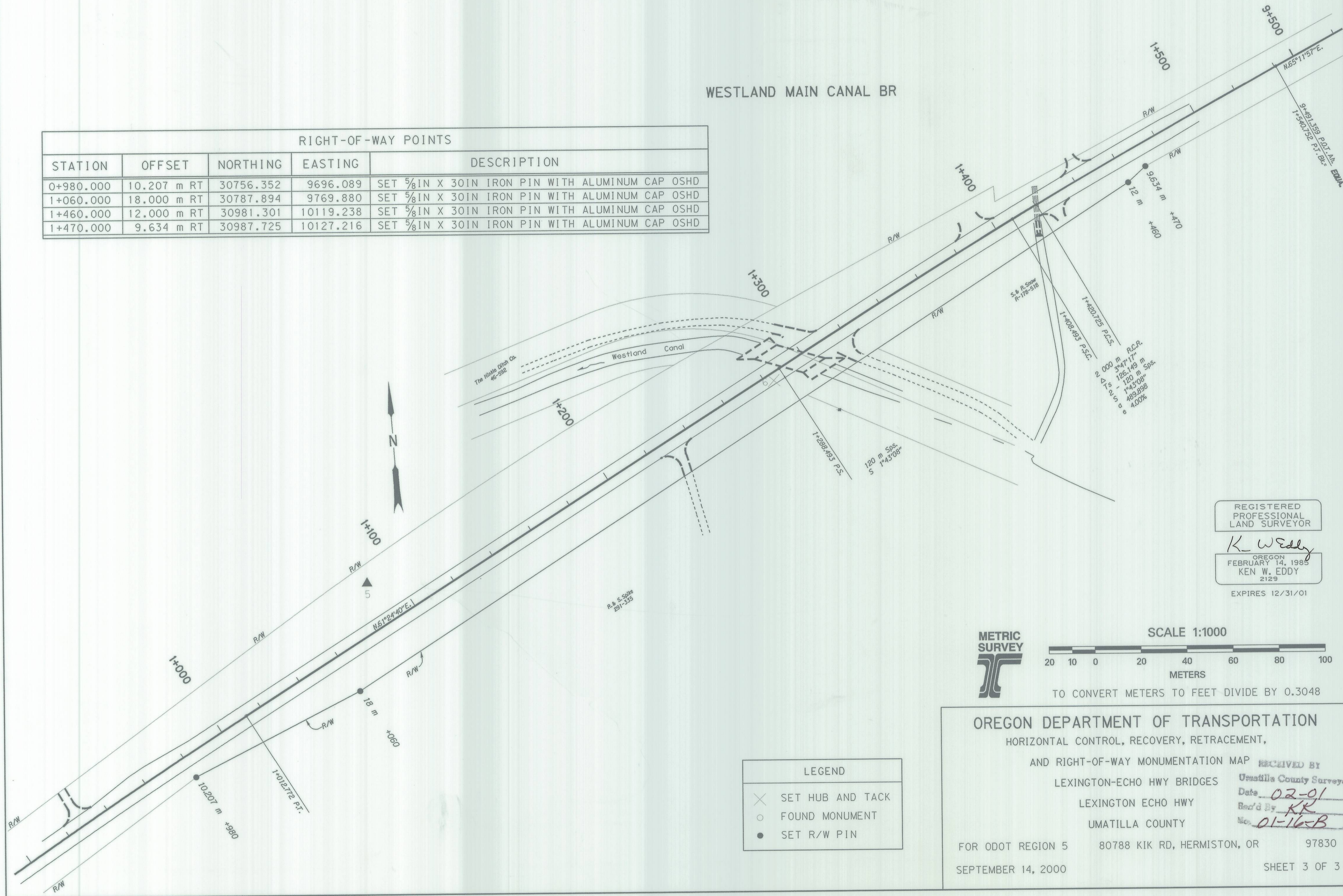
LEGEND	
⊗	SET HUB AND TACK
○	FOUND MONUMENT
●	SET R/W PIN

OREGON DEPARTMENT OF TRANSPORTATION
 HORIZONTAL CONTROL, RECOVERY, RETRACEMENT,
 AND RIGHT-OF-WAY MONUMENTATION MAP
 RECEIVED BY
 LEXINGTON-ECHO HWY BRIDGES
 LEXINGTON ECHO HWY
 UMATILLA COUNTY
 FOR ODOT REGION 5 80788 KIK RD, HERMISTON, OR 97830
 SEPTEMBER 14, 2000 SHEET 2 OF 3

S.E. 1/4 SEC. 17 T.3 N. R.29 E. W. M.
 N.W. 1/4 SEC. 16 T.3 N. R.29 E. W. M.

WESTLAND MAIN CANAL BR

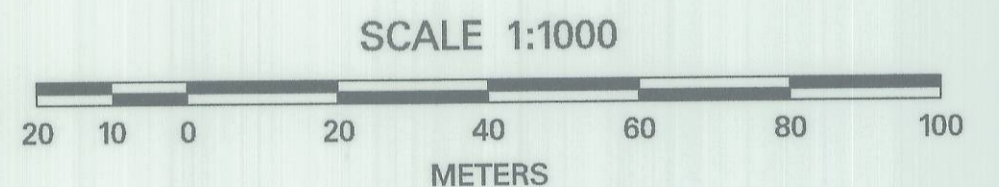
RIGHT-OF-WAY POINTS				
STATION	OFFSET	NORTHING	EASTING	DESCRIPTION
0+980.000	10.207 m RT	30756.352	9696.089	SET 5/8" IN X 30" IN IRON PIN WITH ALUMINUM CAP OSHD
1+060.000	18.000 m RT	30787.894	9769.880	SET 5/8" IN X 30" IN IRON PIN WITH ALUMINUM CAP OSHD
1+460.000	12.000 m RT	30981.301	10119.238	SET 5/8" IN X 30" IN IRON PIN WITH ALUMINUM CAP OSHD
1+470.000	9.634 m RT	30987.725	10127.216	SET 5/8" IN X 30" IN IRON PIN WITH ALUMINUM CAP OSHD



REGISTERED
 PROFESSIONAL
 LAND SURVEYOR

K. W. Eddy
 OREGON
 FEBRUARY 14, 1985
 KEN W. EDDY
 2129

EXPIRES 12/31/01



TO CONVERT METERS TO FEET DIVIDE BY 0.3048

LEGEND	
✕	SET HUB AND TACK
○	FOUND MONUMENT
●	SET R/W PIN

OREGON DEPARTMENT OF TRANSPORTATION
 HORIZONTAL CONTROL, RECOVERY, RETRACEMENT,
 AND RIGHT-OF-WAY MONUMENTATION MAP RECEIVED BY
 LEXINGTON-ECHO HWY BRIDGES Umatilla County Surveyor
 LEXINGTON ECHO HWY Date 02-01
 UMATILLA COUNTY Rec'd By KK
 No. 01-16-B

FOR ODOT REGION 5 80788 KIK RD, HERMISTON, OR 97830