

RECORD OF SURVEY

CORNER RECOVERY NOTES:

SEE ACCOMPANYING NOTES ON SHEETS 2 OF 4 THROUGH 4 OF 4.

1. STATE LINE 0 MILE CORNER. FOUND 2 1/2" BRASS CAP ON GALVANIZED IRON PIPE PER BUREAU OF LAND MANAGEMENT SURVEY APPROVED OCTOBER 13TH, 1983. PLAT AND SURVEY NOTES ON FILE WITH THE UMATILLA COUNTY SURVEYOR'S OFFICE.
2. SECTION CORNER. FOUND 2" BRASS CAP ON GALVANIZED IRON PIPE PER LAND CORNER RECORD # 9268492 AND SURVEY RECORDED AT VOLUME 5, PAGE 259.
3. SECTION CORNER. ACCEPTED FENCE CORNER WITH FENCES NORTH, SOUTH AND WEST AND REMONUMENTED CORNER. LAND CORNER RECORD FILED SEPARATELY.
4. SECTION CORNER. FOUND 1/2" REBAR WITH YELLOW PLASTIC CAP MARKED "KNUDSEN 0508", SET IN MOUND OF STONE. MOUND OF STONE IS REFERRED TO ON RECORD SURVEY RECORDED AT VOLUME 5, PAGE 145.
5. SECTION CORNER. FOUND 16 X 9" SET BASALT STONE, 10" ABOVE GROUND, WITH "X" CHISELED ON TOP REFERRED TO ON 1916 SURVEY FOR LAMBDA, FILE # 2-S-021, WALLA WALLA COUNTY ENGINEER'S OFFICE. LAND CORNER RECORD FILED SEPARATELY.
6. SECTION CORNER. FOUND 16 X 12 X 6" BASALT STONE WITH "X" CHISELED ON IT UPRODATED AT FENCE CORNER WITH FENCES SOUTH AND EAST. REMONUMENTED CORNER. LAND CORNER RECORD FILED SEPARATELY.
7. ONE QUARTER SECTION CORNER. FOUND 9 X 7" SET BASALT STONE, 4" ABOVE GROUND, WITH "X" CHISELED ON TOP, REFERRED TO ON 1916 SURVEY FOR LAMBDA, FILE # 2-S-021, WALLA WALLA COUNTY ENGINEER'S OFFICE. LAND CORNER RECORD FILED SEPARATELY.
8. STATE LINE 7 1/2 MILE CORNER. FOUND CORNER MONUMENT IDENTIFIED BY TWO LARGE STONES AND POST REMAINS BELOW GROUND LEVEL. REMONUMENTED. LAND CORNER RECORD FILED SEPARATELY.
9. SECTION CORNER. HELD MEAN INTERSECTION OF ANCIENT FENCE LINES EVIDENCED BY OLD ROCK JACKS EXTENDING NORTH, SOUTH, EAST AND WEST. REMONUMENTED CORNER. LAND CORNER RECORD FILED SEPARATELY.
10. STATE LINE 9 MILE CORNER. FOUND MOUND OF STONE AND POST REMAINS BELOW GROUND. REMONUMENTED CORNER. LAND CORNER RECORD FILED SEPARATELY.
11. MONUMENT ESTABLISHED AS THE 9 MILE CORNER BY BUREAU OF LAND MANAGEMENT IN SURVEY APPROVED OCTOBER 14, 1983, RECORDED AT THE OFFICE OF THE UMATILLA COUNTY SURVEYOR. THIS MONUMENT BEARS NORTH 87°54'45" EAST A DISTANCE OF 359.81 FEET FROM THE RECOVERED 9 MILE CORNER ON THE STATE LINE.
12. SECTION CORNER. FOUND MOUND OF STONE AND REMONUMENTED. LAND CORNER RECORD FILED SEPARATELY.
13. SECTION CORNER. HELD FENCE INTERSECTION WITH ANCIENT FENCES EXTENDING NORTH, SOUTH, EAST AND WEST. REMONUMENTED CORNER. LAND CORNER RECORD FILED SEPARATELY.
14. STATE LINE 9 1/2 MILE CORNER. FOUND ORIGINAL CORNER IDENTIFIED BY TWO LARGE STONES AND POST REMAINS BELOW GROUND. REMONUMENTED CORNER. LAND CORNER RECORD FILED SEPARATELY.
15. STATE LINE 10 MILE CORNER. FOUND MOUND OF NATIVE STONE IN LINE OF OLD ROCK JACKS MADE UP OF IMPORTED STONE. REMONUMENTED CORNER. LAND CORNER RECORD FILED SEPARATELY.
16. SECTION CORNER. FOUND 8"x4" BASALT STONE 12" BELOW GROUND SURFACE AS REPORTED ON LAND CORNER RECORD FILED AT AUDITOR'S FILE # 9606175.
17. SECTION CORNER. FOUND 5/8" REBAR WITH PLASTIC CAP MARKED "TOMKINS SURVEYING" AS REPORTED ON LAND CORNER RECORD FILED AT AUDITOR'S FILE # 0105448.
18. NOTE: SOUTH 76°20' WEST, 189 FEET FROM THE CALCULATED POSITION FOR THE 11 MILE CORNER IS A LARGE MOUND OF STONE SIMILAR TO OTHER STONE MOUNDS FOR ACCEPTED CORNERS ON THE STATE LINE. THIS MOUND IS A FEW FEET SOUTH OF AN EAST WEST FENCE LINE. NORTH OF THIS MOUND AND THE FENCE LINE ARE ROLLS OF WIRE INDICATING THE FENCE LINE HAS BEEN REBUILT AND THE WIRE REPLACED. ALTHOUGH MAJOR'S TOPOGRAPHIC CALLS AND BEARING TO A "LARGE BOULDER" @ "S 81°50' E, 15 CHS" --- (THIS BOULDER IS LESS THAN 5 CHAINS FROM STONE MOUND) FIT REASONABLY WELL, I HAVE REJECTED THIS STONE MOUND AS THE 11 MILE CORNER --- IT'S TOO FAR OUT OF POSITION RELATIVE TO OTHER RECOVERED CORNERS AND IS QUITE LIKELY THE REMAINS OF AN OLD FENCE JACK. FURTHER, I FIND ABSOLUTELY NO EVIDENCE OF THE RECORDED STONE MOUND AT THE WASHINGTON CLOSING CORNER BETWEEN RANGES 32 AND 33, 10.39 CHAINS EAST OF EITHER THE CALCULATED POSITION OR THE REJECTED STONE MOUND.
19. STATE LINE 12 MILE CORNER. FOUND MOUND OF LARGE STONES IN BOTTOM OF RAVINE AND WOOD FRAGMENTS OF ORIGINAL POST. REMONUMENTED CORNER. LAND CORNER RECORD FILED SEPARATELY.
20. ONE-QUARTER CORNER. FOUND AND HELD 1 1/4" O.D. IRON PIPE WITH YELLOW PLASTIC CAP MARKED "VA 12696 OR 1059", 6.5 FEET NORTH OF EAST-WEST FENCE LINE, AS REPORTED ON LAND CORNER RECORD FILED AT AUDITOR'S FILE # 9507377. THERE IS ALSO A 8 X 8 X 14" STONE (NO VISIBLE MARKS), LOCATED ABOUT 25 FEET WEST OF THE PIPE AND ABOUT 3 FEET SOUTH OF THE EAST-WEST FENCE. STONE IS SITTING UPRIGHT BUT LOOKS LIKE IT HAS BEEN RECENTLY DUG OUT.
21. SECTION CORNER. FOUND 1/2" REBAR AT ROAD INTERSECTION AS REPORTED ON LAND CORNER RECORD FILED AT AUDITOR'S FILE # 9507195.

continued at right.....

continued from left.....

22. ONE-QUARTER CORNER. FOUND 20 X 17 X 14" STONE JUST NORTH OF A RAILROAD TIE FENCE CORNER WITH FENCES EXTENDING NORTH AND WEST. NO MARKS FOUND IN STONE. STONE LOOKS DISTURBED. REMONUMENTED CORNER. LAND CORNER RECORD FILED SEPARATELY.

23. S17/S16 CC OREGON. FOUND ORIGINAL 8 X 8 X 16" BASALT STONE WITH GROOVES LYING LOOSE BY ROCK JACK. REMONUMENTED AS DESCRIBED IN LAND CORNER RECORD FILED SEPARATELY. CORNER IS N 09°00'00" E, 26.87' FROM STATE LINE AND N 84°46'34" W, 310.68' FROM CALCULATED 13 MILE STATE LINE CORNER POSITION. LAND CORNER RECORD FILED SEPARATELY.

24. STATE LINE MILE 13 CORNER. THE CORNER MONUMENT LOCATION IS DESTROYED BY TAILINGS FROM THE WEAVER ROCK PIT. CORNER LOCATION WAS CALCULATED ON THE STATE LINE, BETWEEN THE RECOVERED 12 MILE CORNER AND THE MARKED STONE FOUND AT THE WASHINGTON CLOSING CORNER BETWEEN SECTIONS 16 AND 17, USING THE REVERSED RECORD BEARING TO THE LARGE "BOULDER" IN BED OF RAVINE, (RECORD S 07°46' W, 3 CHS). RECORD "BOULDER" STILL EXISTS, BEARS S 07°46' W, 213.18' FROM REESTABLISHED 13 MILE CORNER POSITION.

25. S17/S16 CC WASHINGTON. FOUND 13 X 9" SET STONE WITH "X" CHISELED ON TOP AT INTERSECTION OF FENCES EAST, WEST AND NORTH.

26. SECTION CORNER. HELD EAST-WEST FIELD AND OLD FENCE LINE FOR LATITUDE IN CALCULATING POSITION FOR THIS CORNER. THIS FIELD AND FENCE LINE EXTENDS APPROXIMATELY 3 MILES TO THE EAST IN A STRAIGHT LINE. PROPORTIONED DEPARTURE BETWEEN THE REMONUMENTED 1/4 CORNER COMMON TO SECTIONS 8 AND 17, AND THE CALCULATED CORNER COMMON TO SECTIONS 7 AND 18 ON THE RANGE LINE BETWEEN RANGES 32 AND 33 E. CONSULTED FILE # 2-1-166, WALLA WALLA COUNTY ENGINEER'S OFFICE AND SEARCHED FOR STONES CALLED, WITHOUT SUCCESS.

27. ONE QUARTER SECTION CORNER. FOUND 12 X 9 X 7" BASALT STONE, (NO VISIBLE MARKS) SET IN A STONE MOUND. REMONUMENTED CORNER. LAND CORNER RECORD FILED SEPARATELY.

28. SECTION CORNER. FOUND 11 X 10" SET BASALT STONE, 10" ABOVE GROUND WITH NO VISIBLE MARKS. LAND CORNER RECORD FILED SEPARATELY.

NOTE:

CORNER POSITIONS CALCULATED ON THE STATE LINE AND ON THE NORTH LINE OF T6N, R32E, W.M. ARE CALCULATED ON THE PARALLEL OF LATITUDE, USING PROPORTIONATE MEASUREMENT BETWEEN CONTROLLING CORNERS, PER BLM 1973 "MANUAL OF INSTRUCTIONS", SECTIONS 2-75 THROUGH 2-78.

CALCULATIONS WITHIN FRACTIONAL SECTIONS ABUTTING THE STATE LINE ARE BASED ON "MEAN BEARING" METHODS DESCRIBED IN BLM 1973 "MANUAL OF INSTRUCTIONS", SECTIONS 3-88 THROUGH 3-92.

REQUIRED SECTION CORNERS FOR WASHINGTON SECTIONS CLOSING ON THE STATE LINE, IN TOWNSHIPS 6N, RANGES 32 AND 33 EAST, WERE SEARCHED, WITH NO SUCCESS, EXCEPT FOR THE CLOSING CORNER TO SECTIONS 16 AND 17, T6N, R32E, W.M. POSITIONS FOR REQUIRED CORNERS WERE CALCULATED BY SINGLE PROPORTIONATE MEASURE, ON THE PARALLEL OF LATITUDE BETWEEN CONTROLLING CORNERS.

NARRATIVE

THE PURPOSE OF THIS SURVEY WAS TO LOCATE PORTIONS OF THE OREGON-WASHINGTON STATE LINE AND CERTAIN SECTION AND SECTION SUBDIVISION LINES BETWEEN PROPERTIES LEASED BY FPL ENERGY FOR THE STATELINE WIND PROJECT.

THE SURVEY IS LOCATED ALONG THE STATE LINE BETWEEN THE 0 MILE CORNER AND THE 13 MILE CORNER, IN TOWNSHIPS 6 NORTH, RANGES 31 EAST, 32 EAST AND THE WEST PART OF RANGE 33 EAST, W.M., WALLA WALLA COUNTY, WASHINGTON.

ALL STATE LINE MILE AND ONE-HALF MILE CORNERS BETWEEN THE REESTABLISHED 0 MILE MARKER AND THE 13 MILE MARKER WERE SEARCHED. THE STATE LINE 7 1/2 MILE CORNER, 9 MILE CORNER, 9 1/2 MILE CORNER, 10 MILE CORNER AND 12 MILE CORNERS WERE RECOVERED AND REMONUMENTED. AN ORIGINAL ACCESSORY "BOULDER" FOR THE 13 MILE CORNER WAS RECOVERED, BUT THE CORNER WAS NOT REMONUMENTED. --- THE CORNER AREA IS COVERED BY ROCK TAILING FROM THE WEAVER ROCK PIT. THE ORIGINAL 9 MILE CORNER IS AT VARIANCE WITH THE 9 MILE CORNER MONUMENT SET BY BUREAU OF LAND MANAGEMENT DURING THEIR SURVEY APPROVED OCTOBER 14TH, 1983. THE BUREAU OF LAND MANAGEMENT REGIONAL OFFICE WAS NOTIFIED AND FIELD REPRESENTATIVES VISITED AND APPROVED OF RECOVERED STATE LINE CORNERS IN MAY, 2001. THE BUREAU OF LAND MANAGEMENT IS TO MAKE SOME CORRECTIVE SURVEYS, BUT THIS WORK WILL ONLY AFFECT CERTAIN SECTIONS IN T6N, R31E, W.M. IN OREGON.

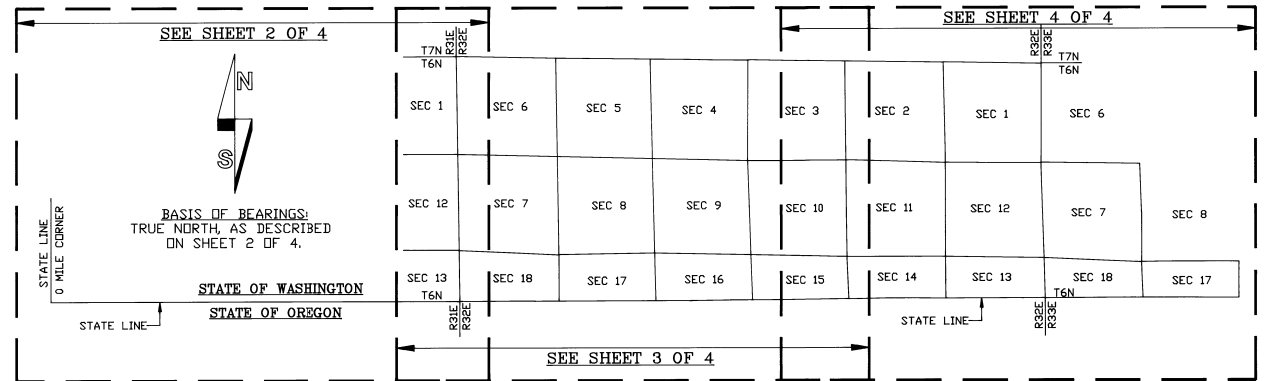
REQUIRED CORNERS IN T6N, R32E, AND 6N, R32E, W.M. WERE SEARCHED AND ACCEPTABLE CORNER EVIDENCE WAS REMONUMENTED, AS SHOWN, BASED ON THE RECOVERED CORNERS. NECESSARY LINES BETWEEN LEASED PROPERTIES WERE CALCULATED. LOCATION OF PARTS OF THE STATE LINE AND CERTAIN DIVISION LINES BETWEEN LEASED PROPERTIES WAS NECESSARY TO DETERMINE WHICH STATE AND ON WHOSE PROPERTY THE VARIOUS WIND TURBINES ARE SITUATED.

SEARCH FOR ORIGINAL CORNERS WAS COMPLICATED BY THE FACT THAT MANY OF THE ORIGINAL CORNERS WERE MONUMENTED WITH WOOD POSTS, EARTH MOUNDS AND PITS IN THE 1860'S. FOR EXAMPLE, THERE WAS ONLY ONE STONE SET FOR A CORNER IN THE SUBDIVISION OF T6N, R32E, W.M. MUCH OF THE AREA HAS BEEN FARMED AND THE NEARLY CONSTANT WIND HAS BLOWN AWAY THE MOUNDS AND FILLED THE PITS IN UNFARMED AREAS. MANY OF THE FENCES IN THE AREA APPEAR TO BE CONSTRUCTED FOR CONVENIENCE OR ON PROJECTIONS OF OTHER FENCES OR ROADS VISIBLE IN THE DISTANCE. DANIEL MAJOR, THE ASTRONOMER RESPONSIBLE FOR MOST OF THE ORIGINAL SURVEYS, WAS FOND OF REPORTING LANDMARKS OR ROCK OUTCROPS SOME DISTANCE (OFTEN MILES) FROM THE CORNER AS ACCESSORIES. BEARINGS TO THESE ACCESSORIES FROM THE ORIGINAL FIELD NOTES ARE ALWAYS REPORTED TO THE NEAREST MINUTE OF ANGLE SO A PERSON MAY ASSUME THE ACCESSORY BEARINGS COULD BE USED IN SOME CASES TO DETERMINE A CORNER LOCATION, BASED ON ACTUAL FIELD MEASUREMENT TO SOME OF THESE LANDMARK ACCESSORIES. I BELIEVE THEY COULD BE USED TO APPROXIMATELY LOCATE A CORNER BUT THEY ARE GENERALLY NOT PRECISE. MAJOR ALSO REPORTS SEVERAL ACCESSORY TIES CLOSE TO CORNER LOCATIONS --- THESE APPEAR MORE RELIABLE. I ALSO NOTE THAT, IN GENERAL, MAJORS' MEASUREMENTS APPEAR TO BE LONG RELATIVE TO REPORTED RECORD DISTANCE. THIS IS CONFIRMED BY DEPUTY SURVEYOR WALDEN'S REMEASURED DISTANCES OF THE 1ST, 3RD AND 5TH MILES OF THE STATE LINE. MAJORS' LONGER MEASUREMENTS ACCOUNT FOR THE FACT THAT THE FRACTIONAL SECTIONS IMMEDIATELY NORTH OF THE STATE LINE BEING SHORT RELATIVE TO REPORTED RECORD MEASUREMENTS.

THE ASSISTANCE OF DENNIS GAYLORD, WAPLS 23006, DRPLS 1636, IS ACKNOWLEDGED AND APPRECIATED. MR. GAYLORD, OPERATING AS AN INDEPENDENT CONSULTANT, PERFORMED AND ASSISTED IN CORNER SEARCH AND EVALUATION OF RECOVERED EVIDENCE AND PROVIDED TECHNICAL ADVICE, FROM HIS YEARS OF EXPERIENCE AS A CADASTRAL SURVEYOR FOR THE USDA, FOREST SERVICE.

CORNER SEARCHES WERE MADE WITH BEACON CORRECTED REAL TIME G.P.S. UNITS OF SUB 1 METER AND SUB 3 METER QUALITY. CORNER TIES WERE MADE WITH A LEICA 399 GEODETIC G.P.S. SYSTEM OPERATED IN STATIC (+- 1 CM) OR REAL TIME KINEMATIC MODE, (+- 2-4 CM) USING CLOSED TRAVERSE AND OBSERVED, AVERAGED, RADIAL TIES. MONUMENTS WERE VISITED IN APRIL, MAY AND JUNE, 2001.

LOCATION DIAGRAM AND MAP SHEET INDEX



SHEET 1 OF 4

SURVEYOR'S CERTIFICATE:

THIS SURVEY, REPORTED ON MAP SHEETS 1 THROUGH 4 OF 4, CORRECTLY REPRESENTS A SURVEY MADE BY ME OR UNDER MY DIRECTION AT THE REQUEST OF FPL ENERGY, INC.

Will. R. Wells
WILLIAM R. WELLS



REGISTERED PROFESSIONAL LAND SURVEYOR

Will. R. Wells

OREGON
JULY 22, 1977
WILLIAM R. WELLS
11972
RENEWS 6/30/02

WILLIAM R. WELLS, PLS
357 N.E. HWY. 11
P.O. BOX 1696
PENDLETON, OR 97801
PHONE: (541) 276-6362

DATE: 06/01 DR. BY: WRW
CK. BY: WRW/DLG NO: 00-682
VFPLW/P10







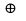

PROJECT:

SURVEY FOR:
FPL ENERGY, INC..
STATELINE WIND PROJECT
P.O. BOX 409
TOUCHET, WA 99360

7-01
KE
01-111-B

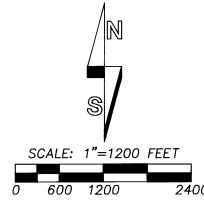
RECORD OF SURVEY

LEGEND

-  - OREGON-WASHINGTON STATE LINE MILE MONUMENT SEARCHED, NOT FOUND OR REESTABLISHED UNLESS OTHERWISE NOTED. (NOTE: 1/2 MILE STATE LINE MONUMENTS WERE ALSO SEARCHED BUT WERE NOT RECOVERED UNLESS SO NOTED).
-  - OREGON-WASHINGTON STATE LINE MILE OR 1/2 MILE CORNER FOUND AND REMONUMENTED. LAND CORNER RECORD IS FILED CONCURRENTLY WITH THIS RECORD OF SURVEY. CORNERS ARE MONUMENTED WITH 2 1/4" BRASS CAPS ON 1" X 30" GALVANIZED IRON PIPES OR 2 1/2" ALUMINUM CAPS ON 2 1/2" X 30" GALVANIZED IRON PIPES OR 2 1/2" X 30" ALUMINUM CAPS WITH EMBEDDED MAGNET.
-  - PUBLIC LAND SURVEY CORNER FOUND AS NOTED.
-  - PUBLIC LAND SURVEY CORNER RECOVERED AND REMONUMENTED. LAND CORNER RECORD IS FILED CONCURRENTLY WITH THIS RECORD OF SURVEY, UNLESS OTHERWISE NOTED. CORNERS ARE MONUMENTED WITH 2 1/4" BRASS CAPS ON 1" X 30" GALVANIZED IRON PIPES OR 2 1/2" ALUMINUM CAPS ON 1/2" X 30" ALUMINUM PIPES WITH EMBEDDED MAGNET.
-  - 2 1/2" ALUMINUM PIPE MONUMENTS ESTABLISHED BY BUREAU OF LAND MANAGEMENT IN 1980-1981 DEPENDENT RESURVEY OF PORTIONS OF T6N, R31E, W.M. OREGON. SURVEY APPROVED OCTOBER 14, 1983. COPY OF SURVEY AND NOTES ARE ON FILE WITH THE UMATILLA COUNTY SURVEYOR'S OFFICE. THESE MONUMENTS ARE SUPERSEDED BY CORNERS RECOVERED ON THIS SURVEY AND WERE NOT USED.
-  - MONUMENT FOUND AS NOTED.
-  - CALCULATED POINT ONLY, NOT SET OR FOUND.
- L18 - INDICATES LINE TOO SHORT TO ANNOTATE, SEE "SHORT LINE TABLE".
-  - NOTE IDENTIFICATION SYMBOL, SEE "CORNER RECOVERY NOTES", SHEET 1 OF 4.
- LCR - INDICATES LAND CORNER RECORD.
- CH - INDICATES THE UNIT OF MEASURE "CHAINS".
- (XX) CH M) - RECORD DIMENSION FROM SURVEY BY DANIEL MAJOR, UNDER CONTRACT NUMBER 72, DATED MAY 5, 1863.
- (XX) CH R) - RECORD DIMENSION FROM SURVEY BY EDWIN RICHARDSON, UNDER SPECIAL INSTRUCTIONS DATED FEBRUARY 22, 1867.
- (XX) CH W) - RECORD DIMENSION FROM SURVEY BY NICHOLAS WALDEN, UNDER CONTRACT NUMBER 209, DATED JULY 6, 1874.
- (XX) CH L) - RECORD DIMENSION FROM SURVEY BY FRANCIS LOEHR, UNDER CONTRACT NUMBER 323, DATED JUNE 26, 1886.
- (XX) CH P) - RECORD DIMENSION SHOWN ON GOVERNMENT PLAT OF T6N, R32E, W.M., AFTER RESURVEY OF NORTH AND WEST LINES BY EDWIN RICHARDSON.
- (XX) CH L.W.L) - RECORD DIMENSION SHOWN ON SURVEY BY L.W. LOEHR, FILE #2-5-047, WALLA WALLA COUNTY ENGINEER'S OFFICE.
- (XX)R2 - RECORD DIMENSION, RECORD SURVEY RECORDED AT VOLUME 5, PAGE 145.
- (XX)R3 - RECORD DIMENSION FROM RECORD SURVEY RECORDED AT VOLUME 6 OF ROLL FILE, PAGE 353, AUDITOR'S FILE NUMBER 9908117.
- (XX)R4 - RECORD DIMENSION FROM 1916 SURVEY FOR LAMBDIN BY L.W. LOEHR, FILE #2-S-021, WALLA WALLA COUNTY ENGINEER'S OFFICE.
- (XX)R5 - RECORD DIMENSION FROM BUREAU OF LAND MANAGEMENT DEPENDENT RESURVEY OF PORTIONS OF T6N, R31E, W.M. OREGON. SURVEY APPROVED OCTOBER 14, 1983, FILED AT THE UMATILLA COUNTY SURVEYOR'S OFFICE.
- (XX)R6 - RECORD DIMENSION, RECORD SURVEY RECORDED AT VOLUME 5, PAGE 259.

SHORT LINE TABLE

NO.	BEARING	DISTANCE
L1	N 89°51'24" E	525.24'

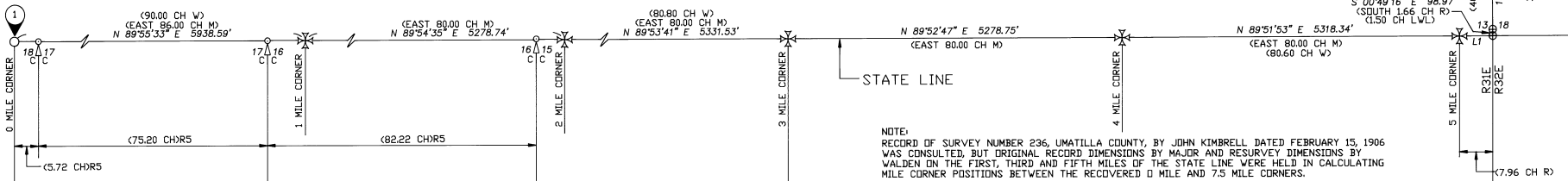


BASIS OF BEARINGS:

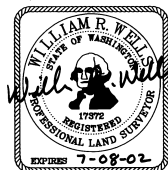
BEARINGS SHOWN ON THIS SURVEY ARE ROTATED TO TRUE NORTH ABOUT THE STATE LINE 9 MILE MONUMENT, LOCATED ON THE SOUTH LINE OF SECTION 15, T6N, R32E., W.M.

STATE OF WASHINGTON

STATE OF OREGON



SHEET 2 OF 4



REGISTERED PROFESSIONAL LAND SURVEYOR
 Will R. Wells
 OREGON
 JULY 22, 1977
 WILLIAM R. WELLS
 1106
 RENEWS 6/30/02

WILLIAM R. WELLS, PLS
 357 N.E. HWY. 11
 P.O. BOX 1696
 PENDLETON, OR 97801
 PHONE: (541) 276-6362

DATE: 06/01	DR. BY: WRV
CK. BY: WRV/DLG	NO: 00-682

EXP. DATE: 06/30/02

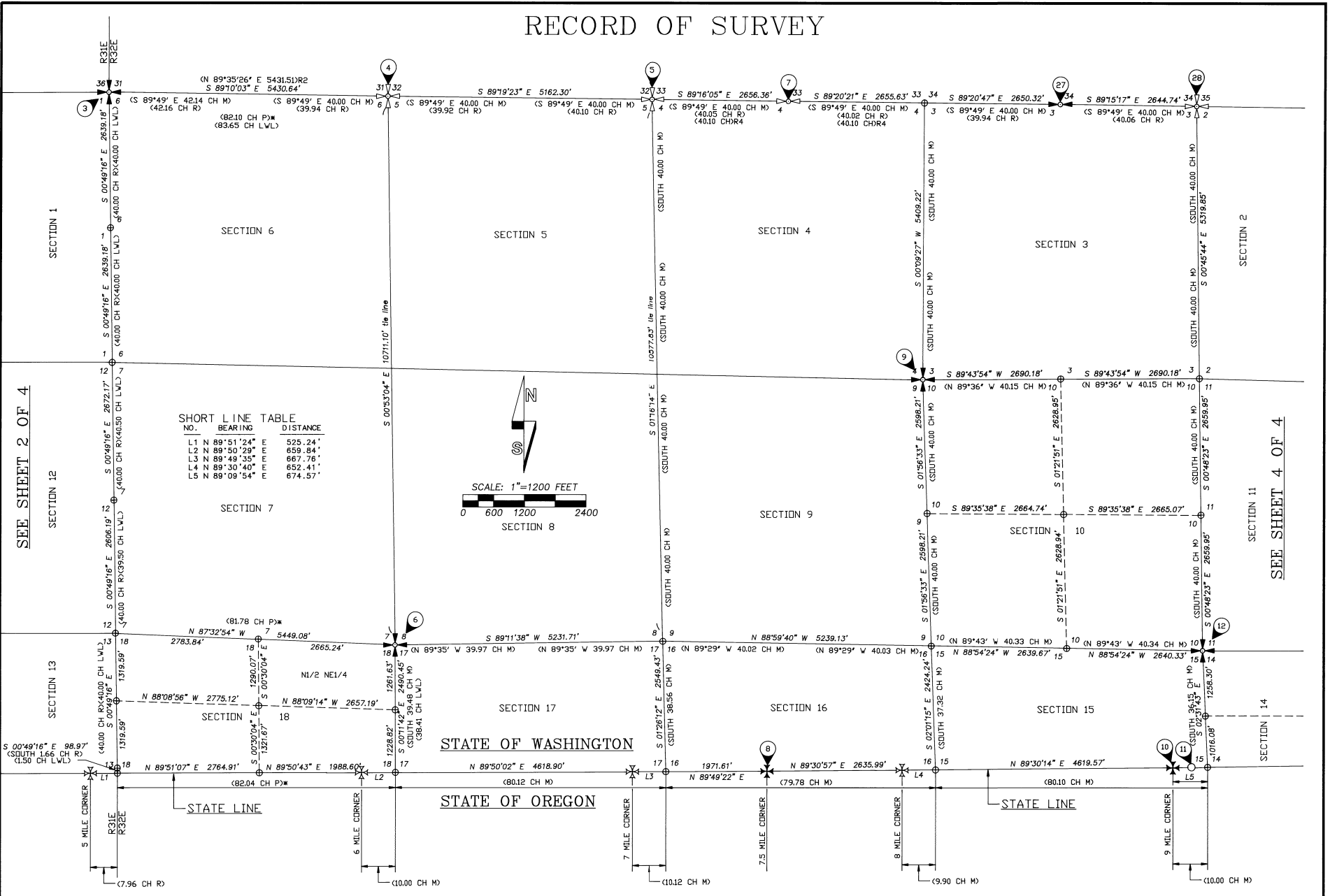
PROJECT:
 SURVEY FOR:
 FPL ENERGY, INC..
 STATELINE WIND PROJECT
 P.O. BOX 409
 TOUCHET, WA 99360

NOTE: HELD RECORD DIMENSIONS BY L.V. LOEHR FOR RANGE LINE PROPORTIONS FILE # E-S-047, WALLA WALLA COUNTY ENGINEER'S OFFICE.

SEE SHEET 3 OF 4

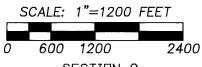
9-01
 KK
 01-1116

RECORD OF SURVEY



SHORT LINE TABLE

NO.	BEARING	DISTANCE
L1	N 89°51'24"	525.24'
L2	N 89°50'29"	659.84'
L3	N 89°49'35"	667.76'
L4	N 89°30'46"	652.41'
L5	N 89°09'54"	674.57'

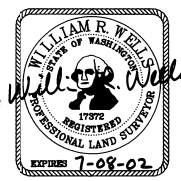


SEE SHEET 2 OF 4

SEE SHEET 4 OF 4

SHEET 3 OF 4

Date: 9-01
 01-111-B

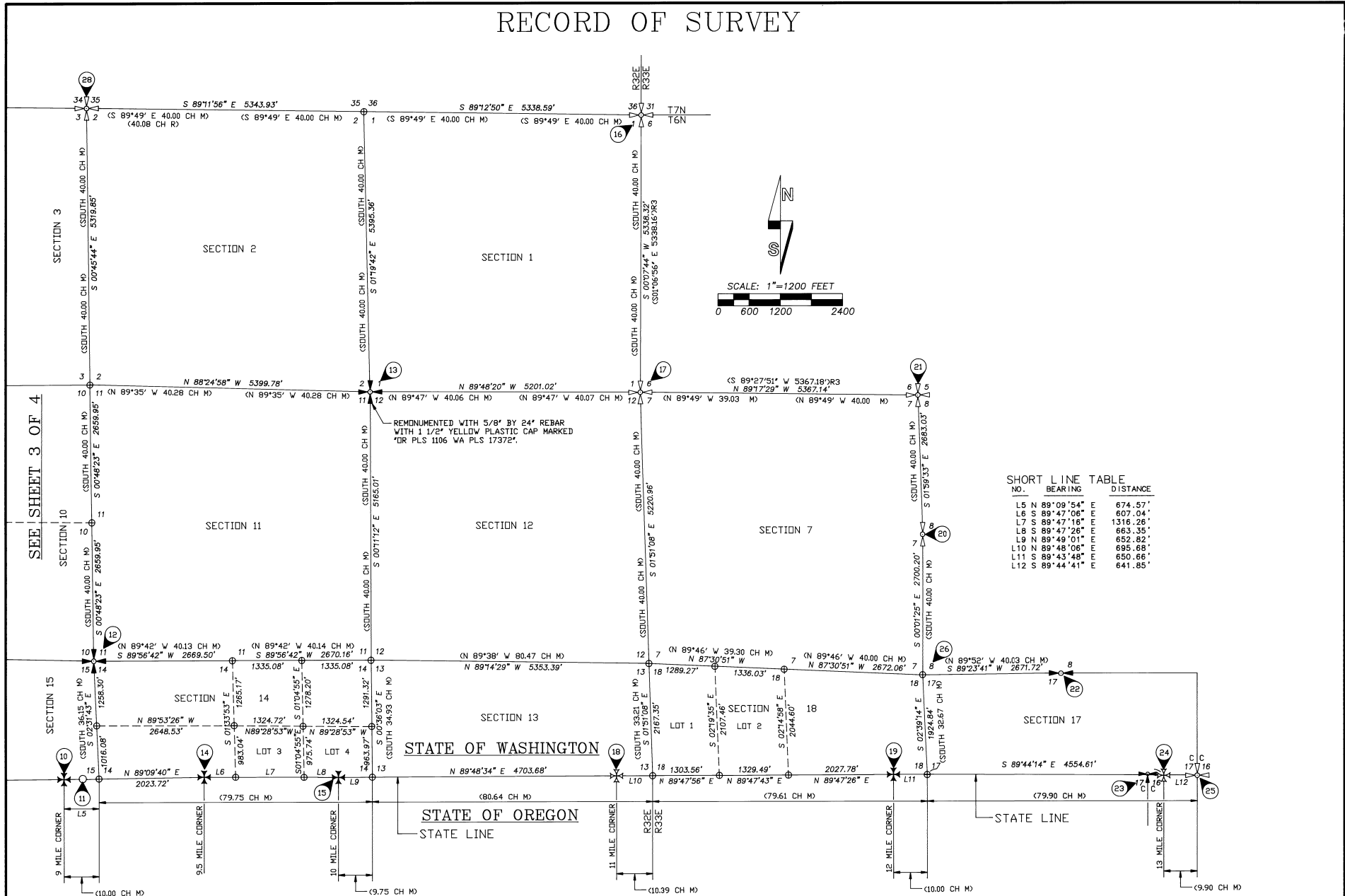


REGISTERED
 PROFESSIONAL
 LAND SURVEYOR
Will R. Wells
 OREGON
 JULY 22, 1977
 WILLIAM R. WELLS
 1106
 RENEWS 6/30/02

WILLIAM R. WELLS, PLS 357 N.E. HWY. 11 P.O. BOX 1696 PENDLETON, OR 97801 PHONE: (541) 276-6362	
DATE: 06/01	DR. BY: WRW
CK. BY: WRW/DLG	NO: 00-682
VFLWP3D	

PROJECT: SURVEY FOR: FPL ENERGY, INC.. STATELINE WIND PROJECT P.O. BOX 409 TOUCHET, WA 99360
--

RECORD OF SURVEY



SHORT LINE TABLE

NO.	BEARING	DISTANCE
L5	N 89°08'54" E	674.57'
L6	S 89°47'06" E	607.04'
L7	S 89°47'16" E	1316.26'
L8	S 89°47'26" E	663.35'
L9	N 89°49'01" E	652.82'
L10	N 89°48'06" E	695.68'
L11	S 89°43'48" E	650.66'
L12	S 89°44'41" E	641.85'

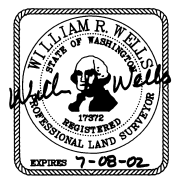
SEE SHEET 3 OF 4

STATE OF WASHINGTON

STATE OF OREGON
STATE LINE

SHEET 4 OF 4

1-01
11-14-B



REGISTERED PROFESSIONAL LAND SURVEYOR
Will R. Wells
OREGON
JULY 22, 1977
WILLIAM R. WELLS
1106
RENEWS 6/30/02

WILLIAM R. WELLS, PLS
357 N.E. HWY. 11
P.O. BOX 1696
PENDLETON, OR 97801
PHONE: (541) 276-6362

DATE: 06/01 DR. BY: WRW
CK. BY: WRW/DLG NO: 00-682
VFLVP40

PROJECT:
SURVEY FOR:
FPL ENERGY, INC..
STATELINE WIND PROJECT
P.O. BOX 409
TOUCHET, WA 99360