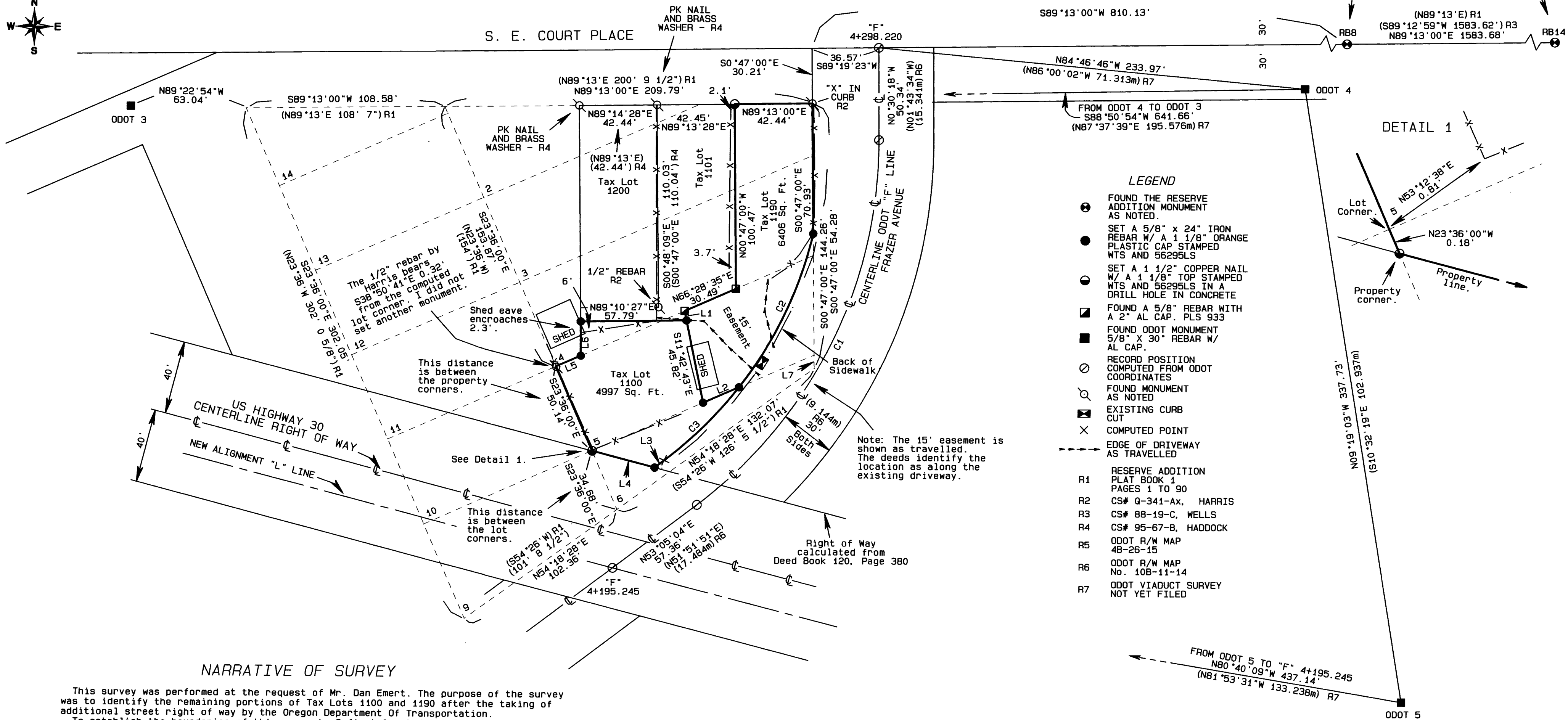
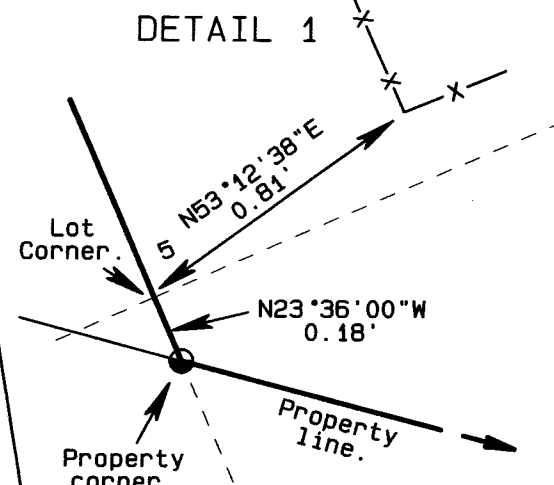


**BLOCK 64, RESERVE ADDITION**  
 LOCATED IN THE NW 1/4 OF THE NE 1/4 OF S11  
 T2N, R32E, W.M., UMATILLA COUNTY, OREGON



**LEGEND**

- FOUND THE RESERVE ADDITION MONUMENT AS NOTED.
  - SET A 5/8" x 24" IRON REBAR W/ A 1 1/8" ORANGE PLASTIC CAP STAMPED WTS AND 56295LS
  - SET A 1 1/2" COPPER NAIL W/ A 1 1/8" TOP STAMPED WTS AND 56295LS IN A DRILL HOLE IN CONCRETE
  - FOUND A 5/8" REBAR WITH A 2" AL CAP. PLS 933
  - FOUND ODOT MONUMENT 5/8" x 30" REBAR W/ AL CAP.
  - RECORD POSITION COMPUTED FROM ODOT COORDINATES
  - FOUND MONUMENT AS NOTED
  - ⊗ EXISTING CURB CUT
  - × COMPUTED POINT
  - EDGE OF DRIVEWAY AS TRAVELLED
- R1 RESERVE ADDITION PLAT BOOK 1 PAGES 1 TO 90  
 R2 CS# Q-341-AX, HARRIS  
 R3 CS# 88-19-C, WELLS  
 R4 CS# 95-67-B, HADDOCK  
 R5 ODOT R/W MAP 4B-26-15  
 R6 ODOT R/W MAP No. 10B-11-14  
 R7 ODOT VIADUCT SURVEY NOT YET FILED



**NARRATIVE OF SURVEY**

This survey was performed at the request of Mr. Dan Emert. The purpose of the survey was to identify the remaining portions of Tax Lots 1100 and 1190 after the taking of additional street right of way by the Oregon Department Of Transportation.

To establish the boundaries of this property I first located the Reserve Addition monuments and calculated the location of Block 64. The NE corner of this block was first monumented in 1956. I held the existing mark as the correct location for this Block Corner. The record description of this Block does not close. I believe this is due to an error in the record dimensions on the south line of Lot 6. The record lot description found on Plat Book 1, Page 24 does not close and neither does the external description of the Block. (See the closure table on this map). Because of this I calculated the exterior of the block by holding record distances for the North, East, and West sides of the Block and record angles at the NE corner and the NW corner. I then calculated the lot corners through the center of the block by single proportion.

I located the "F" line established by ODOT from ties to the ODOT monuments shown and the information on ODOT Right of Way map 10B-11-14. It should be noted that the "L" line shown on that map is not the centerline of the Highway alignment. I located the highway right of way from the calls in the deed found in Book 120, Page 380.

The easement shown across tax lot 1190 is for the benefit of tax lots 1101, 1190, and 1200. It was created by the deeds filed in Reel 56, pages 980 and 997 as 15' wide and described as lying along the driveway "as the same is presently located". At that time tax lots 1101 and 1190 appeared to be under the same ownership. When tax lot 1190 was sold as shown in the contract recorded in Reel 89 at Page 820 the document reserved to the seller an easement of unspecified width for tax lot 1101. This easement was also across the existing driveway and I believe both easements lie in the same place.

The building to which the party wall agreement as recorded in Reel 86 at Page 198 applied was recently torn down by the owners.

**RECORD DEEDS**

BOOK 107	PAGE 261
BOOK 120	PAGE 380
REEL 56	PAGE 980
REEL 56	PAGE 997
REEL 86	PAGE 198
REEL 89	PAGE 820
REEL 226	PAGE 1305
REEL 386	PAGE 615
REEL 387	PAGE 061
REEL 431	PAGE 441

**CLOSURE TABLE**

Note: The data in the table below are the calculated closure errors computed from the record lot and block descriptions for Block 64 found in Plat Book 1, Page 24.

LOT No.	BEARING	DISTANCE
2	N44°27'03"W	0.00'
3	N31°50'20"E	0.07'
4	N04°38'31"E	0.04'
5	N04°38'31"E	0.04'
6	S48°44'30"W	5.79'
9	S54°05'58"W	0.51'
14	N42°11'49"E	0.10'
BLOCK 64	S49°44'15"W	6.28'

**LINE TABLE**

LINE No.	BEARING	DISTANCE
L1	N11°42'43"W	5.27'
L2	N66°31'19"E	21.36'
L3	N53°05'04"E	6.55'
L4	S75°27'30"E	35.32'
L5	N66°28'35"E	14.78'
L6	N00°21'06"W	18.64'
L7	S00°47'00"E	7.30'
L7 (R1)	(S00°47'E)	(7' 3 5/8")

**CURVE TABLE**

CURVE No.	ARC	DELTA	RADIUS	CHORD	BEARING
C1	230.15'	53°35'22"	246.06'	221.85'	N26°17'23"E
C1 (R6)	70.150m	53°35'25"	75.000m	67.620m	N25°04'08"E
C2	93.60'	24°49'13"	216.06'	92.87'	N25°31'57"E
C3	57.10'	15°08'30"	216.06'	56.93'	N45°30'49"E

**BASIS OF BEARINGS**

Bearings are based on the line between R88 and RB14 as per the plat of Reserve Addition.

REGISTERED PROFESSIONAL LAND SURVEYOR  
*Stephen K. Haddock*  
 OREGON  
 JULY 9, 2001  
 STEPHEN K. HADDOCK  
 56295LS  
 RENEWS 6-30-0005

**RECEIVED BY**

Umatilla County Surveyor  
 Date: 7-03  
 Rec'd By: KR  
 No.: 03-128-B

<b>SURVEY FOR</b> DAN & LORIE EMERT 612 NW 7th PENDLETON, OR 97801	PROJECT No. 03-02	SCALE 1" = 40'
	MONUMENTS SET: JULY 26, 2003	
<b>WITNESS TREE SURVEYING</b> Stephen K. Haddock, PLS P.O. Box 6 Pilot Rock, Oregon 97868 (541) 443-2922		