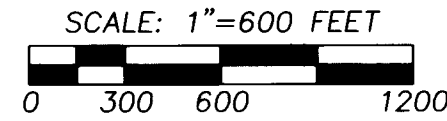


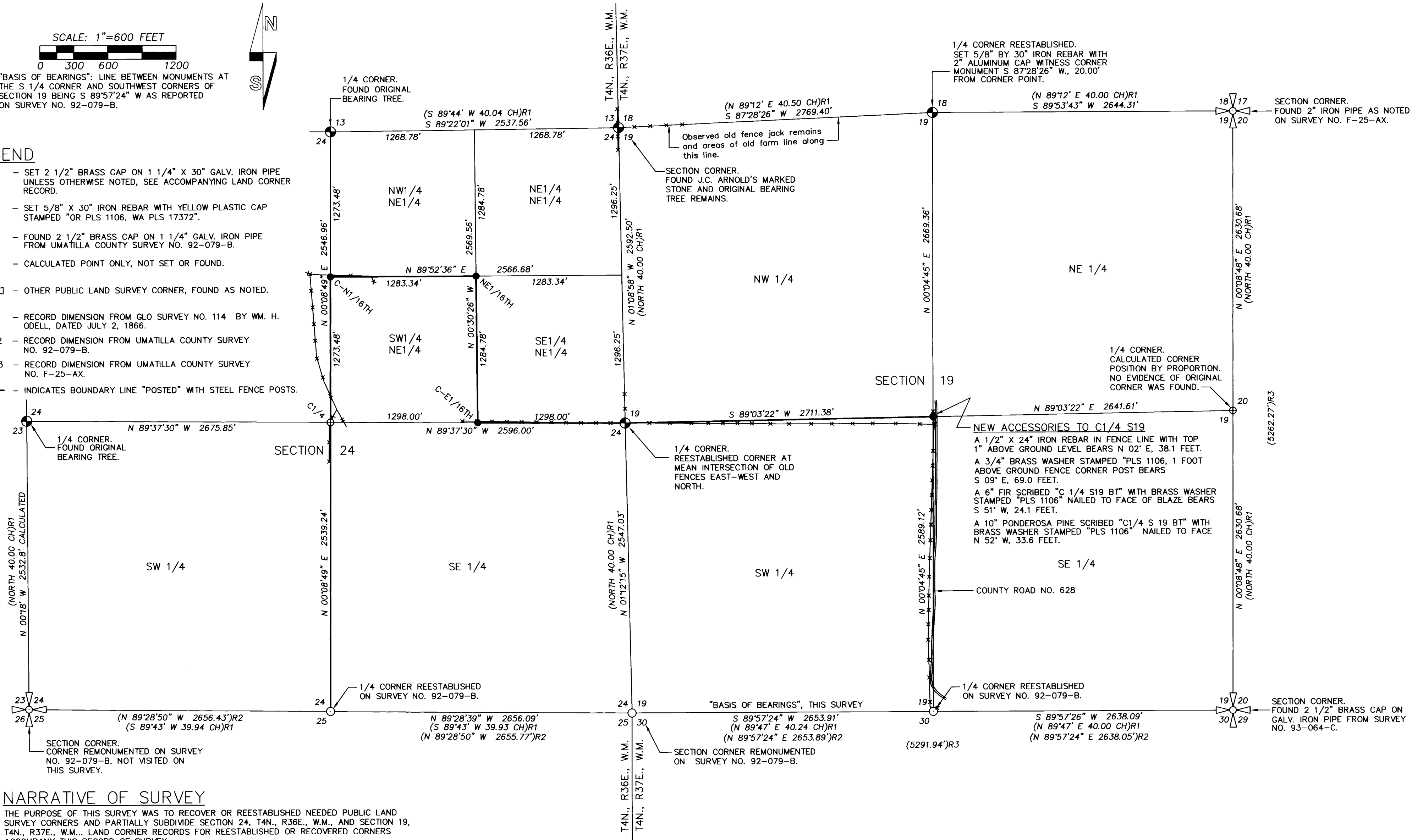
RECORD OF SURVEY



"BASIS OF BEARINGS": LINE BETWEEN MONUMENTS AT THE S 1/4 CORNER AND SOUTHWEST CORNERS OF SECTION 19 BEING S 89°57'24" W AS REPORTED ON SURVEY NO. 92-079-B.

LEGEND

- - SET 2 1/2" BRASS CAP ON 1 1/4" X 30" GALV. IRON PIPE UNLESS OTHERWISE NOTED, SEE ACCOMPANYING LAND CORNER RECORD.
- - SET 5/8" X 30" IRON REBAR WITH YELLOW PLASTIC CAP STAMPED "OR PLS 1106, WA PLS 17372".
- - FOUND 2 1/2" BRASS CAP ON 1 1/4" GALV. IRON PIPE FROM UMATILLA COUNTY SURVEY NO. 92-079-B.
- ⊕ - CALCULATED POINT ONLY, NOT SET OR FOUND.
- ⊗ - OTHER PUBLIC LAND SURVEY CORNER, FOUND AS NOTED.
- (XOX)R1 - RECORD DIMENSION FROM GLO SURVEY NO. 114 BY WM. H. ODELL, DATED JULY 2, 1866.
- (XOX)R2 - RECORD DIMENSION FROM UMATILLA COUNTY SURVEY NO. 92-079-B.
- (XOX)R3 - RECORD DIMENSION FROM UMATILLA COUNTY SURVEY NO. F-25-AX.
- - INDICATES BOUNDARY LINE "POSTED" WITH STEEL FENCE POSTS.



NARRATIVE OF SURVEY

THE PURPOSE OF THIS SURVEY WAS TO RECOVER OR REESTABLISHED NEEDED PUBLIC LAND SURVEY CORNERS AND PARTIALLY SUBDIVIDE SECTION 24, T4N., R36E., W.M., AND SECTION 19, T4N., R37E., W.M., LAND CORNER RECORDS FOR REESTABLISHED OR RECOVERED CORNERS ACCOMPANY THIS RECORD OF SURVEY.

BOUNDARIES "POSTED" WITH STEEL FENCE POSTS ARE MARKED WITH 5 1/2 FOOT STEEL FENCE POSTS SET ON THE BOUNDARY LINE AT RANDOM INTERVALS OF APPROXIMATELY 200 TO 300 FEET.

THE CONTROL SURVEY WAS MADE USING TRIMBLE 5700 GEODETIC G.P.S. RECEIVERS OPERATED IN STATIC AND REAL TIME KINEMATIC MODES. TRAVERSING FOR SECTION SUBDIVISION AND "POSTING" WAS DONE BY A 2 PERSON CREW USING A SOKKIA SET 4B, FIVE SECOND TOTAL STATION. NEW SUBDIVISION OF SECTION CORNERS WERE ESTABLISHED BY RADIAL METHODS WITH TOTAL STATION AND VERIFIED BY SEPARATE OBSERVATIONS FROM DIFFERENT BACK SIGHTS.

IT SHOULD BE NOTED THAT WHEN J.C. ARNOLD SUBDIVIDED SECTION 18, T4N., R37E., W.M., IN 1888, HE MADE A LARGE DISTANCE ERROR IN MEASURING BETWEEN THE SOUTHWEST AND NORTHWEST CORNERS OF SECTION 18. ARNOLD REPORTS THE DISTANCE AS 83.54 CHAINS (5513.64 FEET) AND HE REESTABLISHED THE WEST 1/4 CORNER OF SECTION 18 AND THE NORTH 1/16TH CORNER ON THE WEST LINE OF SECTION 18 BASED ON THE INCORRECT DISTANCE OF 83.54 CHAINS. DURING OUR SURVEY I NOTED ROADS AND FENCE IMPROVEMENTS HAD BEEN BUILT BASED ON THE ARNOLD SURVEY MEASUREMENT. THE ACTUAL DISTANCE (DISTANCE MEASURED WITH RESOURCE GRADE G.P.S.), BETWEEN THE RECOVERED SOUTHWEST CORNER OF SECTION 18 AND THE MONUMENTED NORTHWEST CORNER OF SECTION 18 IS APPROXIMATELY 5245 FEET, BEARING BETWEEN CORNERS APPROXIMATELY N 02°14' W.

/LESCLARK2003

REGISTERED
PROFESSIONAL
LAND SURVEYOR

William R. Wells
OREGON
JULY 22, 1977
WILLIAM R. WELLS
1106
RENEWS 6/30/04

WILLIAM R. WELLS, PLS
2602 N.E. RIVERSIDE PLACE
P.O. BOX 1696
PENDLETON, OR 97801
PHONE: (541) 276-6362

DATE: 10/03 DR. BY: DMT
CK. BY: WRW NO: 03-897
RECEIVED BY

PROJECT:
BOUNDARY SURVEY FOR:
ANNA JANE & LES CLARK

LOCATED IN SECTION 24, TOWNSHIP 4
NORTH, RANGE 36 EAST, W.M., & SECTION
19, TOWNSHIP 4 NORTH, RANGE 37 EAST,
W.M., UMATILLA COUNTY, OREGON.

Umatilla County Surveyor

Date 11-03
Rec'd by KK
No. 03-317-B

03-317-B