

RECORD OF SURVEY

SECTION CORNER.
HELD INTERSECTION OF FIELD LINES EXTENDING NORTH AND WEST. SEE CORNER RECORD FILED WITH THIS PLAT. THERE IS A FIELD INTERSECTION WITH FIELD LINES EXTENDING NORTH-SOUTH-EAST AND WEST LOCATED 2685 FEET, +/- NORTH OF THIS POINT, AS MEASURED FROM 1 METER PIXEL RESOLUTION DIGITAL IMAGERY.

NARRATIVE

THIS SURVEY WAS MADE AT THE REQUEST OF JEFF WILSON TO MONUMENT THE BOUNDARIES OF THE EAST HALF OF THE NORTHWEST QUARTER OF THE NORTHWEST QUARTER OF SECTION 34.

THE TOWNSHIP WAS SUBDIVIDED BY ODELL AND LEWIS, U.S. DEPUTY SURVEYORS UNDER CONTRACT NO. 110, IN 1865. GLO CORNERS IN THE PROJECT AREA, ESTABLISHED BY ODELL AND LEWIS WERE MONUMENTED WITH POSTS, CHARRED STAKES, PITS AND EARTH MOUNDS. RESEARCH AT COUNTY SURVEYORS OFFICE DID NOT REVEAL SUBSEQUENT RECORD SURVEYS IN SECTION 34, EXCEPT FOR SOME COUNTY ROAD NOTES AND A CALCULATED POSITION FOR THE SOUTHEAST CORNER OF SECTION 34 MADE ON SURVEY NO. 99-299-B. NORTHERN PACIFIC RAILROAD MAPS, INITIALLY DATED 1888, PROVIDE TIES TO THE SOUTHEAST AND NORTH 1/4 CORNER OF SECTION 34. THE RAILROAD MAPS DO NOT INDICATE WHAT WAS FOUND FOR THE ORIGINAL CORNERS AT TIME OF RAILROAD SURVEY.

I USED THE NORTHERN PACIFIC RAILROAD TIE INFORMATION TO RE-ESTABLISH THE POSITION OF THE SOUTHEAST CORNER OF SECTION 34 AND TO VERIFY ACCEPTANCE OF FIELD LINES EXTENDING SOUTH AND EAST AS BEST REMAINING EVIDENCE OF THE NORTH 1/4 CORNER OF SECTION 34. I HELD THE INTERSECTION OF FARMED FIELD LINES AS THE BEST REMAINING EVIDENCE AT THE SOUTHWEST AND NORTHEAST CORNERS OF SECTION 34. I RE-ESTABLISHED THE LOCATION OF THE NORTHWEST CORNER, THE EAST AND WEST 1/4 CORNERS AND THE SOUTH 1/4 CORNER OF SECTION 34 AS EXPLAINED ON THE FACE OF THIS PLAT. CONSULT CORNER RECORDS FILED WITH THIS PLAT FOR ADDITIONAL INFORMATION ON RE-MONUMENTED CORNERS.

SECTION 34 WAS SUBDIVIDED IN THE NORMAL MANNER AS EXPLAINED IN THE 1973 BLM MANUAL.

IT SHOULD BE NOTED, THAT OVER THE YEARS, I HAVE HAD A GOOD DEAL OF EXPERIENCE IN RETRACTING U.S. DEPUTY SURVEYORS ODELL AND LEWIS. BOTH ODELL AND LEWIS WERE NOTORIOUS "STUBBERS", WHO SELDOM RAN THEIR SECTION SUBDIVISION LINES AS DESCRIBED IN THEIR APPROVED FIELD NOTES. COMMONLY, THESE DEPUTY SURVEYORS WOULD RUN CERTAIN SECTION LINES NORTH-SOUTH AND RUN UNCLOSED "STUB" LINES EAST OR WEST AND TO ESTABLISH 1/4 SECTION CORNERS. DEPENDING ON GROUND TOPOGRAPHY, THEY WOULD AT TIMES RUN EAST-WEST AND RUN UNCLOSED "STUB" LINES NORTH OR SOUTH TO ESTABLISH CORNERS. FORTUNATELY, ON THIS SURVEY IN SECTION 34, ABUTTING THE FIRST STANDARD PARALLEL NORTH, THE ODELL AND LEWIS LINES ARE FAIRLY REGULAR.

THE SURVEY WAS MADE BY USING TRIMBLE 5700 GEODETIC G.P.S. RECEIVERS OPERATED IN REAL TIME KINEMATIC MODE. A STEEL TAPE AND COMPASS WERE USED TO MEASURE ACCESSORIES TO NEW MONUMENTS ESTABLISHED.

1/4 CORNER. SEE NOTE #1.
THERE ARE NO REMAINING FEATURES ON THE GROUND. CORNER AREA IS NOW IN A WHEAT FIELD. CALCULATED LATITUDE FOR CORNER MIDWAY BETWEEN RE-ESTABLISHED CORNERS 1/2 MILE NORTH AND SOUTH. DETERMINED DEPARTURE FOR CORNER BY HOLDING RECORD DISTANCE OF 2024.0 FEET, MEASURED ALONG THE EAST-WEST CENTERLINE OF THE SECTION FROM THE CENTERLINE OF COUNTY ROAD NO. 779. THE DIMENSION OF 2024.0 FEET SHOWS ON A 1916 MAP BY WILLARD BRADLEY, FOR COUNTY ROAD NO. 779. FIELD NOTES FOR THREE SEPARATE COUNTY ROADS CALL THE LOCATION OF KUPERS ROAD NORTH OF THE SOUTHEAST CORNER OF SECTION 34, AS ALONG THE LINE BETWEEN SECTIONS 34 AND 35. KUPERS ROAD FORMERLY PASSED THROUGH THE 1/4 CORNER COMMON TO SECTIONS 34 AND 35.

LEGEND

- - SET 5/8" BY 24" REBAR WITH 1 1/4" YELLOW PLASTIC CAP MARKED "OR PLS 1106 WA PLS 17372".
- ⊕ - INDICATES PUBLIC LAND SURVEY CORNER RE-ESTABLISHED AND MONUMENTED WITH A 2 1/2" BRASS CAP ON 1 1/4" BY 30" GALVANIZED IRON PIPE. SEE CORNER RECORD FILED WITH THIS PLAT.
- ⊕ - CALCULATED POSITION ONLY, NOT SET OR FOUND.
- [XOX CH] - INDICATES RECORD DIMENSION FROM ORIGINAL GLO SURVEY BY ODELL AND LEWIS, U.S. DEPUTY SURVEYORS, UNDER CONTRACT NO. 110 DATED FEBRUARY 7TH, 1865. "CH" INDICATES CHAINS.
- [XOX]RR - INDICATES RECORD DIMENSION FROM NORTHERN PACIFIC RAILROAD MAPS, ORIGINALLY DATED 1888. RAILROAD MAPS WERE FOUND IN UMATILLA COUNTY ASSESSOR'S OFFICE.

STANDARD SECTION CORNER.
RE-ESTABLISHED PER RECORD TIES FROM REMNANTS OF NORTHERN PACIFIC RAILROAD CENTERLINE. SEE CORNER RECORD FILED WITH THIS PLAT. NOTE: THE POSITION OF THIS CORNER WAS ALSO CALCULATED ON SURVEY NO. 99-299-B, WITH REFERENCE TO RECORD TIES OF RAILROAD CENTERLINE.

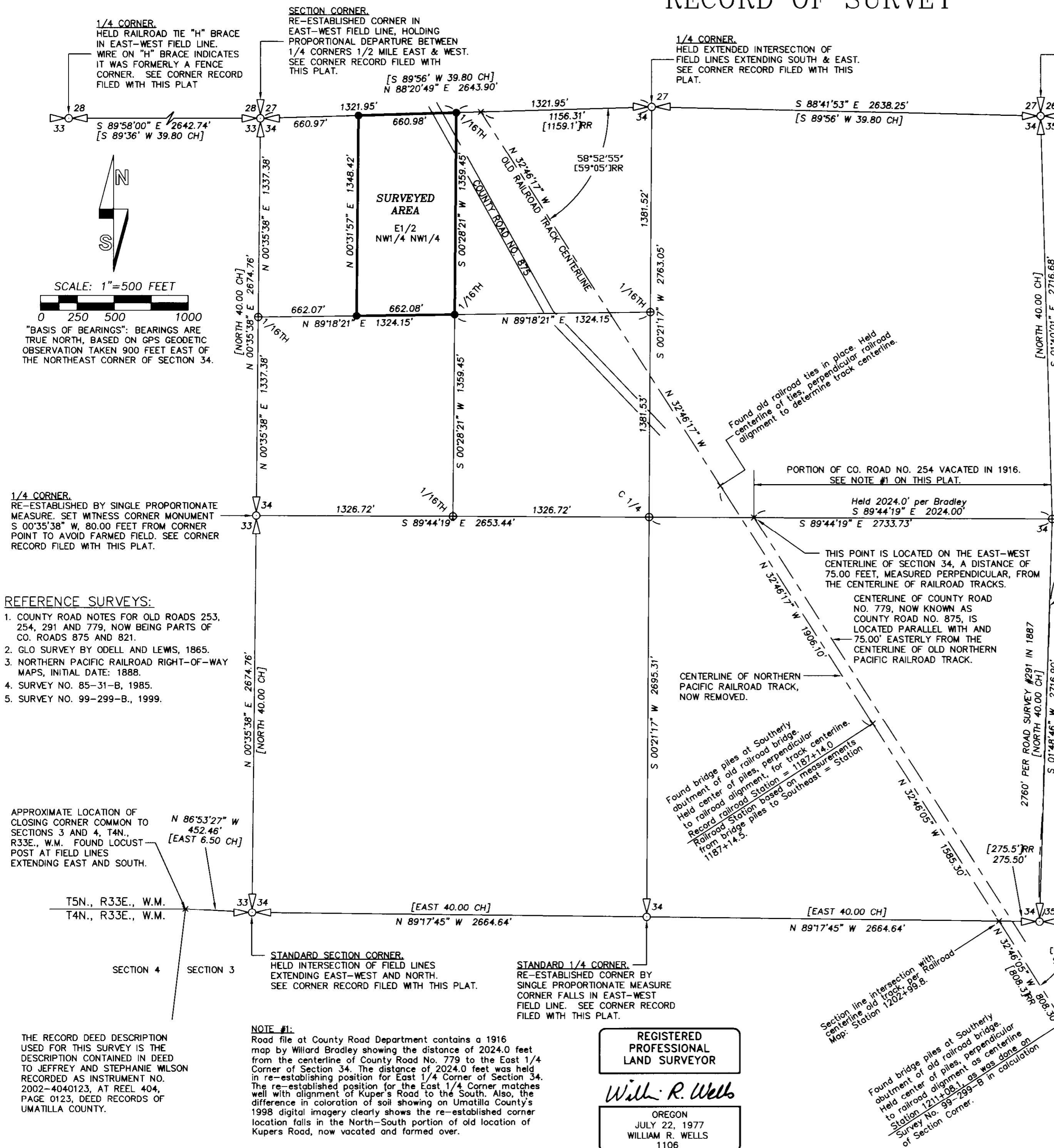
RECEIVED BY
Umatilla County Surveyor
Date: 4.04
Rec'd by: KK
No. 04-76-B

WILLIAM R. WELLS, PLS
2602 N.E. RIVERSIDE PLACE
P.O. BOX 1696
PENDLETON, OR 97801
PHONE: (541) 276-6362

PROJECT:
BOUNDARY SURVEY FOR:
JEFF & STEPHANIE WILSON

DATE: 4/04 DR. BY: DMT
CK. BY: WRW NO: 04-921

LOCATED IN THE NORTHWEST QUARTER OF SECTION 34, TOWNSHIP 5 NORTH, RANGE 33 EAST, W.M., UMATILLA COUNTY, OREGON.



1/4 CORNER.
RE-ESTABLISHED BY SINGLE PROPORTIONATE MEASURE. SET WITNESS CORNER MONUMENT S 00°35'38" W, 80.00 FEET FROM CORNER POINT TO AVOID FARMED FIELD. SEE CORNER RECORD FILED WITH THIS PLAT.

- REFERENCE SURVEYS:**
- COUNTY ROAD NOTES FOR OLD ROADS 253, 254, 291 AND 779, NOW BEING PARTS OF CO. ROADS 875 AND 821.
 - GLO SURVEY BY ODELL AND LEWIS, 1865.
 - NORTHERN PACIFIC RAILROAD RIGHT-OF-WAY MAPS, INITIAL DATE: 1888.
 - SURVEY NO. 85-31-B, 1985.
 - SURVEY NO. 99-299-B, 1999.

APPROXIMATE LOCATION OF CLOSING CORNER COMMON TO SECTIONS 3 AND 4, T4N., R33E., W.M. FOUND LOCUST POST AT FIELD LINES EXTENDING EAST AND SOUTH.

T5N., R33E., W.M.
T4N., R33E., W.M.

THE RECORD DEED DESCRIPTION USED FOR THIS SURVEY IS THE DESCRIPTION CONTAINED IN DEED TO JEFFREY AND STEPHANIE WILSON RECORDED AS INSTRUMENT NO. 2002-4040123, AT REEL 404, PAGE 0123, DEED RECORDS OF UMATILLA COUNTY.

NOTE #1:
Road file at County Road Department contains a 1916 map by Willard Bradley showing the distance of 2024.0 feet from the centerline of County Road No. 779 to the East 1/4 Corner of Section 34. The distance of 2024.0 feet was held in re-establishing position for East 1/4 Corner of Section 34. The re-established position for the East 1/4 Corner matches well with alignment of Kupers Road to the South. Also, the difference in coloration of soil showing on Umatilla County's 1998 digital imagery clearly shows the re-established corner location falls in the North-South portion of old location of Kupers Road, now vacated and farmed over.

REGISTERED PROFESSIONAL LAND SURVEYOR
William R. Wells
OREGON
JULY 22, 1977
WILLIAM R. WELLS
1106
RENEWS 6/30/04