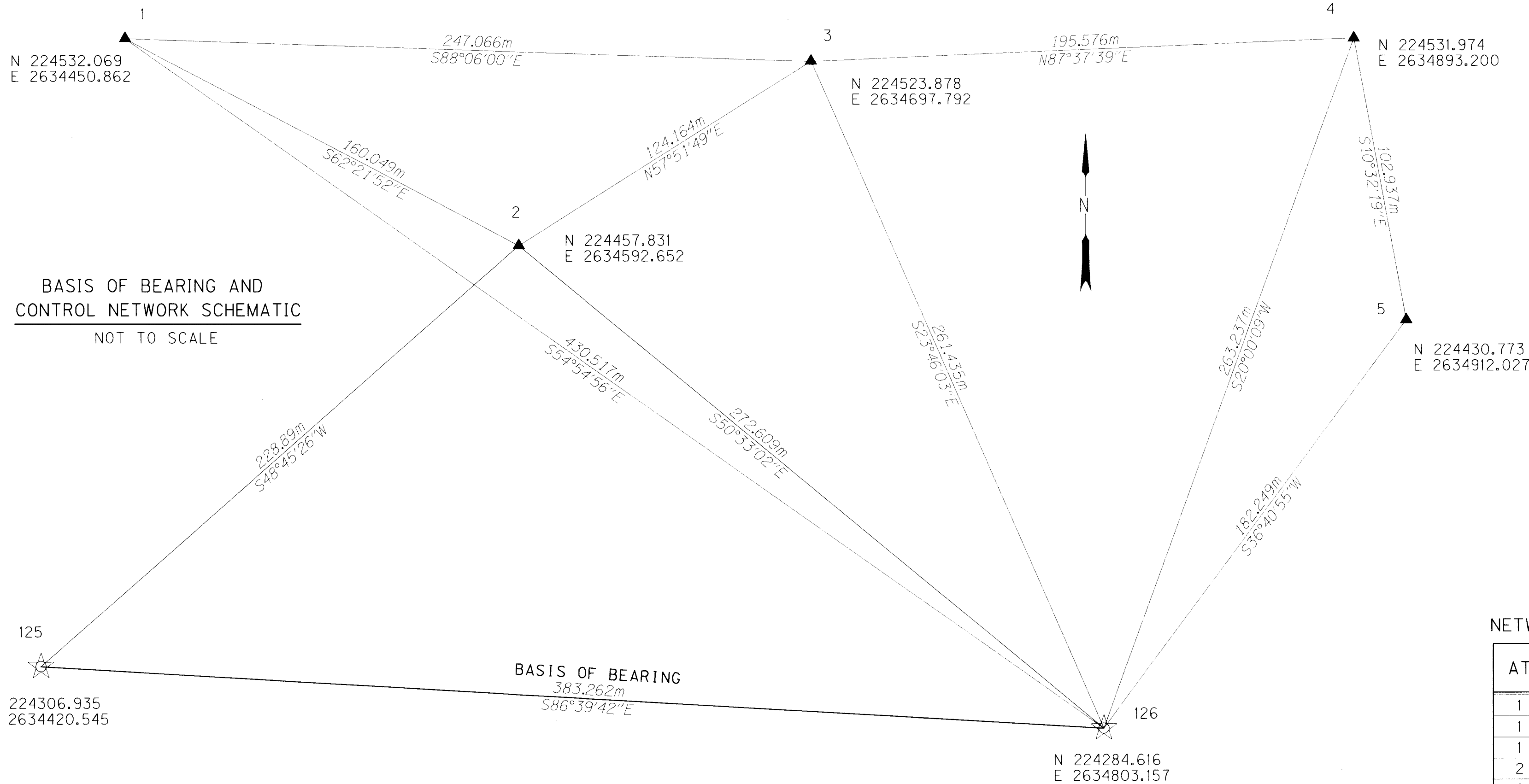


SEC. 11 T.2 N. R.32 E. W. M.



NARRATIVE

THE PURPOSE OF THIS SURVEY IS TO ESTABLISH A NETWORK THAT REFERENCES THE RIGHT OF WAY CENTERLINE AND RIGHT OF WAY BOUNDARY. THIS SURVEY WILL ALSO INCLUDE RESETTING KNOWN SURVEY POINTS THAT WERE DESTROYED DURING THE 10TH STREET - EASTGATE CONSTRUCTION PROJECT. THE SURVEY CREW CONSISTED OF BRENT REYNOLDS - INSTRUMENT MAN AND NOTE KEEPER AND TOM HUEBNER - ROD MAN. THE FIELD WORK FOR THE NETWORK WAS PERFORMED ON OCTOBER 29, 2002. THIS SURVEY TOOK PLACE IN TOWNSHIP 2 NORTH; RANGE 32 EAST; SECTION 11 W.M.

THIS SURVEY USED EXISTING MONUMENT POINTS 125 AND 126 FROM COUNTY SURVEY 99-71-B AS BASIS OF BEARING. THE COORDINATES FOR POINTS 125 AND 126 WERE ALSO FROM COUNTY SURVEY 99-71-B LOCAL DATUM PLANE.

HORIZONTAL LEAST SQUARES ADJUSTMENT WAS THEN CALCULATED IN LISCAD (VERSION 4.1) TO ESTABLISH COORDINATES FOR OTHER NETWORK POINTS. THE LEAST SQUARES ADJUSTMENT METHOD PRODUCED ANGULAR AND DISTANCE RESIDUALS (THE AMOUNT THE FIELD OBSERVED MEASUREMENTS WERE CHANGED DUE TO THE ADJUSTMENT). THE ANGULAR RESIDUALS AVERAGED 1.0 SECONDS, WITH THE GREATEST RESIDUAL BEING 2 SECONDS. THE DISTANCE RESIDUALS AVERAGED 2.6 MM THE GREATEST BEING 8 MM. THE NETWORK MEETS ODOT STANDARDS.

NETWORK POINT 125 IS A FOUND 2 1/2" BRASS DISK STAMPED ODOT GEODETIC CONTROL STATION PT 125. NETWORK POINT 126 IS A FOUND 2 1/2" BRASS DISK STAMPED ODOT GEODETIC CONTROL STATION PT 126. NETWORK POINT 1 IS A SET 5/8" BY 15" IRON ROD WITH ALUMINUM CAP STAMPED 1. NETWORK POINT 2 IS A SET 5/8" BY 30" IRON ROD WITH ALUMINUM CAP STAMPED 2. NETWORK POINT 3 IS A SET 5/8" BY 30" IRON ROD WITH ALUMINUM CAP STAMPED 3. NETWORK POINT 4 IS A SET 5/8" BY 30" IRON ROD WITH ALUMINUM CAP STAMPED 4. NETWORK POINT 5 IS A SET 5/8" BY 30" IRON ROD WITH ALUMINUM CAP STAMPED 5.



TO CONVERT METERS TO FEET DIVIDE BY 0.3048

NETWORK/TRVERSE POINT COORDINATE TABLE

PT	NORTHING	EASTING	DESCRIPTION AND REFERENCE DOCUMENTS
125	224306.935	2634420.545	FND 2 1/2" BRASS DISK STAMPED ODOT GEODETIC CONTROL STATION PT 125, 99-71-B
126	224284.616	2634803.157	FND 2 1/2" BRASS DISK STAMPED ODOT GEODETIC CONTROL STATION PT 126, 99-71-B
1	224532.069	2634450.862	SET 5/8" BY 15" IRON ROD WITH ALUMINUM CAP STAMPED 1
2	224457.831	2634592.652	SET 5/8" BY 30" IRON ROD WITH ALUMINUM CAP STAMPED 2
3	224523.878	2634697.792	SET 5/8" BY 30" IRON ROD WITH ALUMINUM CAP STAMPED 3
4	224531.974	2634893.200	SET 5/8" BY 30" IRON ROD WITH ALUMINUM CAP STAMPED 4
5	224430.773	2634912.027	SET 5/8" BY 30" IRON ROD WITH ALUMINUM CAP STAMPED 5

REGISTERED PROFESSIONAL LAND SURVEYOR

FRANK H. READING
OREGON
JANUARY 15, 2002
59616LS

EXPIRATION DATE: 12.31.04
RECEIVED BY

Umatilla County Surveyor

Date: 4-04

Rec'd By: K.K.

OREGON DEPARTMENT OF TRANSPORTATION

HORIZONTAL CONTROL, RECOVERY, RETRACEMENT,
AND RIGHT OF WAY MONUMENTATION MAP
10TH STREET - EASTGATE (PENDLETON) SECTION
PENDLETON HIGHWAY
UMATILLA COUNTY

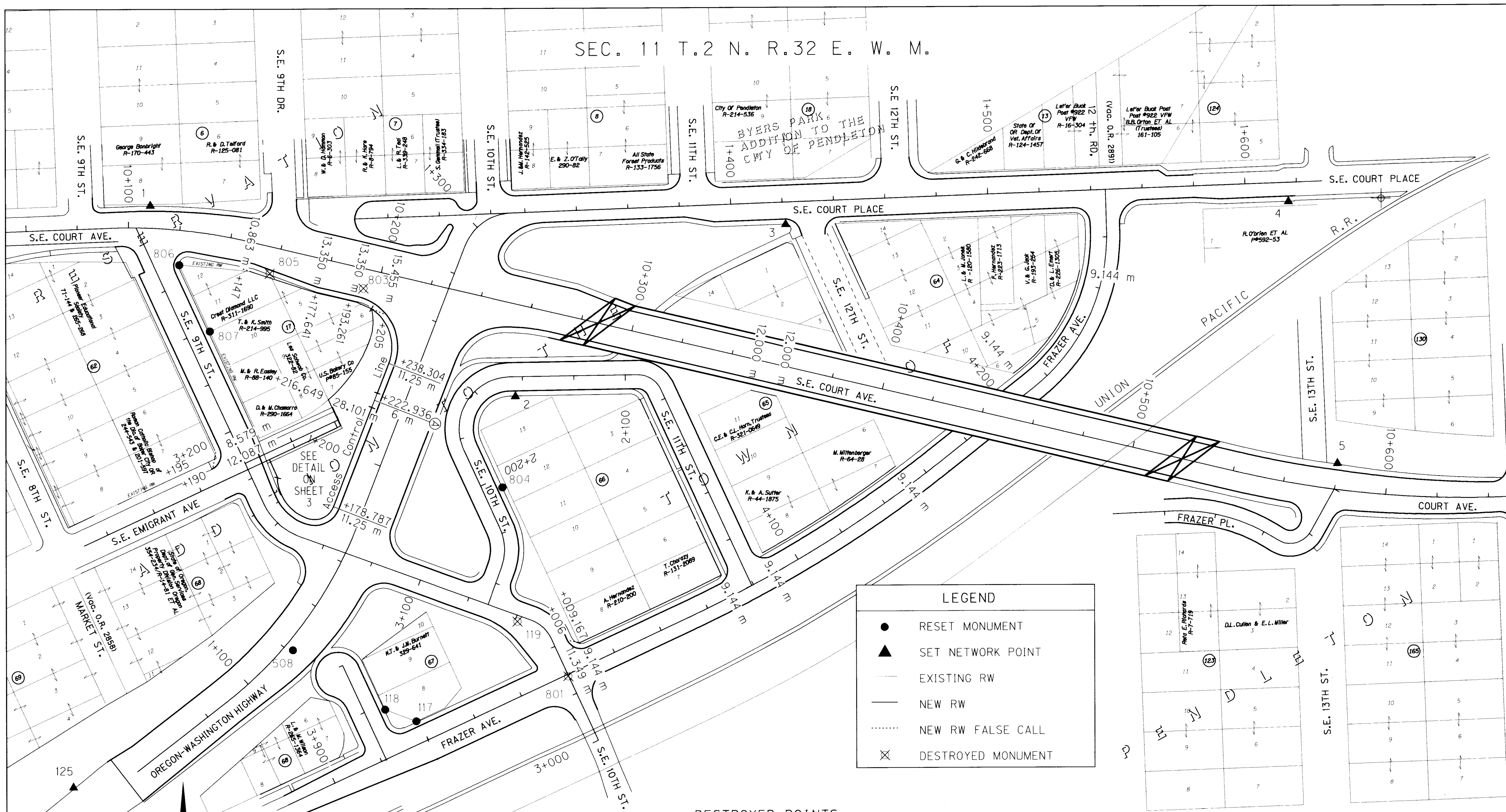
FOR O.D.O.T. REGION 5
JUNE 18, 2002

80788 KIK RD., HERMISTON, OR. 97838

SHEET 1 OF 3

04-080-B

SEC. 11 T.2 N. R.32 E. W. M.



LEGEND

- RESET MONUMENT
- ▲ SET NETWORK POINT
- EXISTING RW
- NEW RW
- ⋯ NEW RW FALSE CALL
- ⊗ DESTROYED MONUMENT

DESTROYED POINTS

PT	NORTHING	EASTING	REFERENCE DOCUMENTS
119	224370.649	2634593.216	8B-34-26, 99-71-B
801	224349.524	2634612.905	99-71-B
803	224499.799	2634533.595	I-11-B, 99-71-B
805	224505.653	2634497.255	I-11-B, 99-71-B

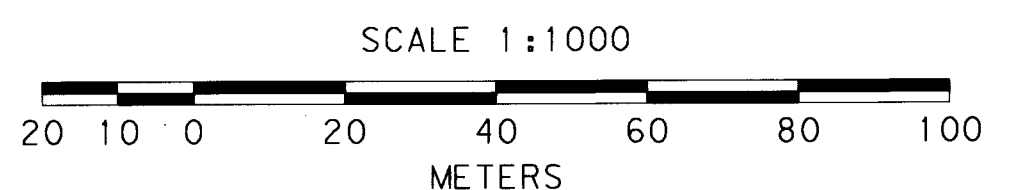
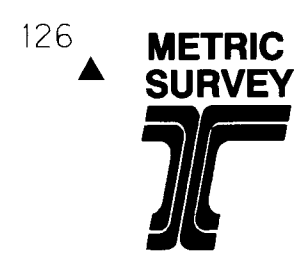
RESET POINTS

PT	NORTHING	EASTING	NEW DESCRIPTION AND REFERENCE DOCUMENTS
117	224332.318	2634553.822	RESET 5/8" BY 30" IRON ROD WITH ALUMINUM CAP, 8B-34-26, 99-71-B
118	224336.842	2634541.717	RESET 5/8" BY 30" IRON ROD WITH ALUMINUM CAP, 8B-34-26, 99-71-B
508	224359.860	2634505.918	RESET 5/8" BY 30" IRON ROD WITH ALUMINUM CAP, PENDLETON CONTROL, 99-71-B
804	224422.691	2634587.535	RESET 5/8" BY 30" IRON ROD WITH ALUMINUM CAP, 8B-34-26, 99-71-B
806	224509.061	2634462.095	RESET 5/8" BY 30" IRON ROD WITH ALUMINUM CAP, I-11-B, 99-71-B
807	224483.424	2634473.995	RESET 5/8" BY 30" IRON ROD WITH ALUMINUM CAP, I-11-B, 99-71-B

REGISTERED PROFESSIONAL LAND SURVEYOR
Frank H. Reading
 OREGON
 JANUARY 15, 2002
 FRANK H. READING
 59616LS

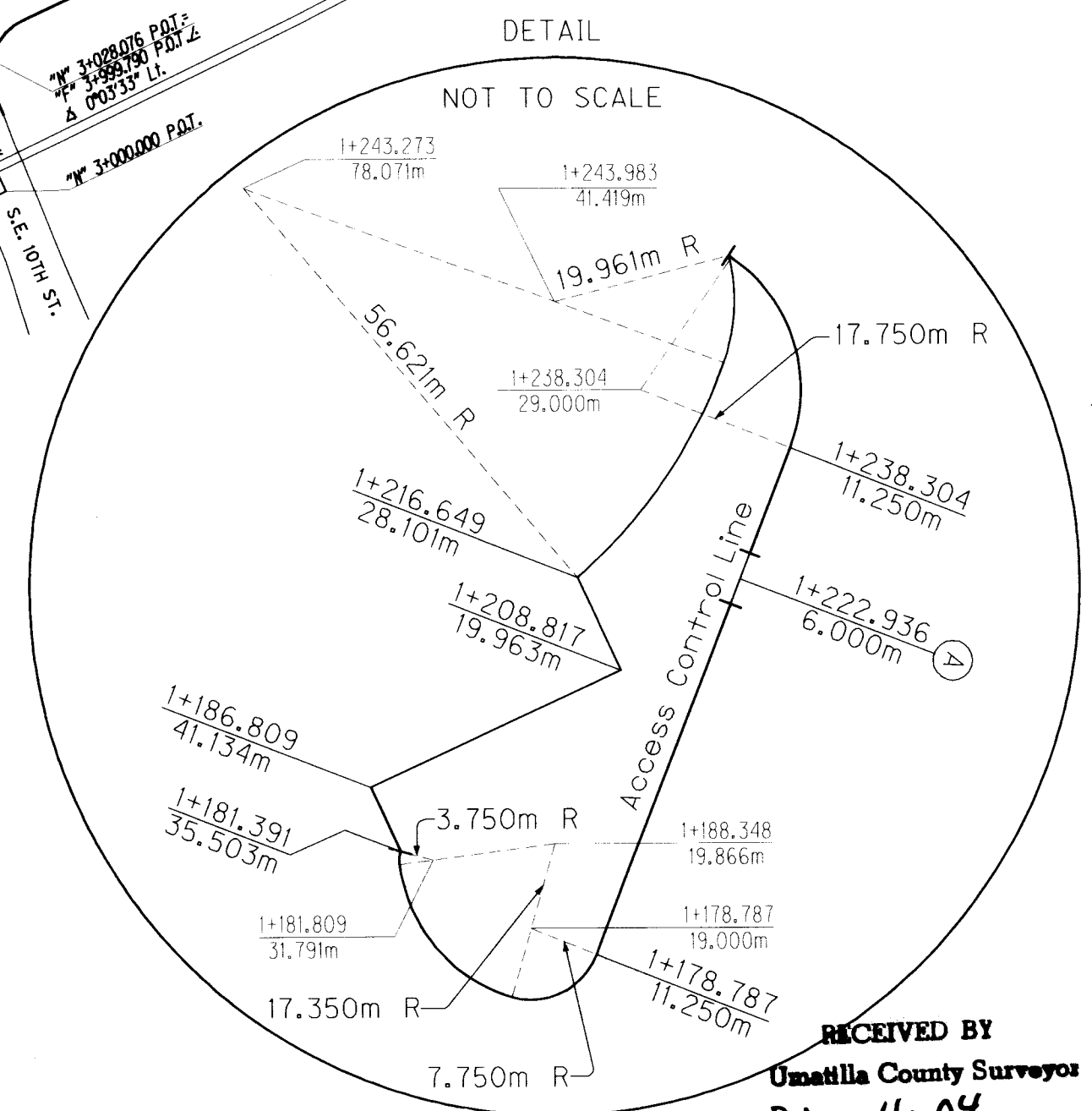
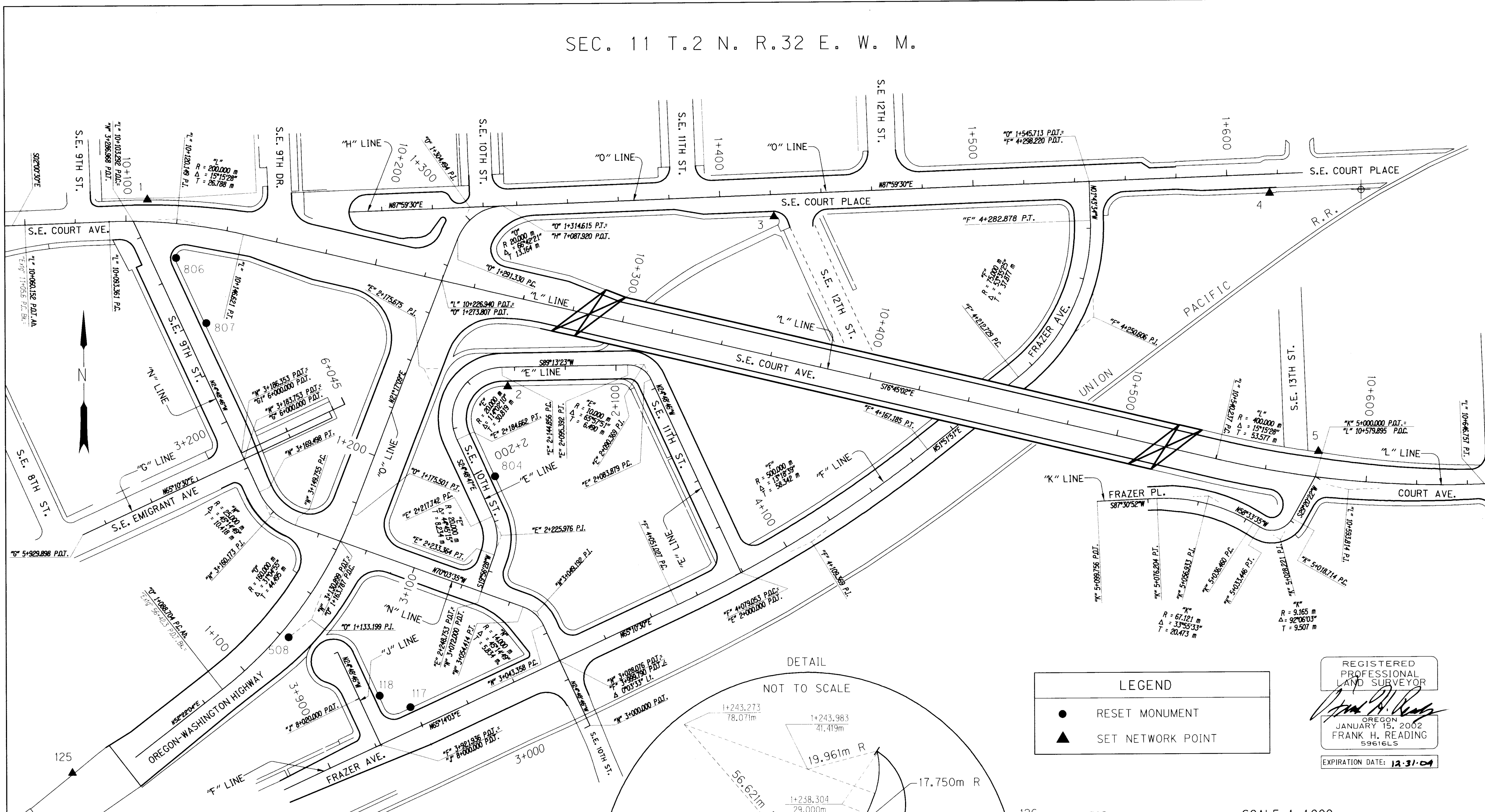
EXPIRATION DATE: 12-31-04
 RECEIVED BY
 Umatilla County Surveyor

Date: 4-04
 Rec'd By: *KB*



OREGON DEPARTMENT OF TRANSPORTATION
 HORIZONTAL CONTROL, RECOVERY, RETRACEMENT,
 AND RIGHT OF WAY MONUMENTATION MAP
 10TH STREET - EASTGATE (PENDLETON) SECTION
 PENDLETON HIGHWAY
 UMATILLA COUNTY
 FOR O.D.O.T. REGION 5 80788 KIK RD., HERMISTON, OR. 97838
 JUNE 18, 2002 SHEET 2 OF 3

SEC. 11 T.2 N. R.32 E. W. M.



ALIGNMENT INTERSECTION POINTS

INTERSECTION	NORTHING	EASTING
L & N	224523.510	2634445.275
L & O	224499.793	2634566.798
L & F	224449.565	2634780.121
L & K	224420.826	2634910.745
O & N	224397.444	2634526.463
O & H	224528.848	2634591.094
O & F	224536.948	2634822.061
N & G1	224432.184	2634487.498
N & G	224429.824	2634488.589
N & E	224377.357	2634581.831
F & J	224317.589	2634542.015
F & N	224350.203	2634612.709
F & E	224384.188	2634684.304

LEGEND

- RESET MONUMENT
- ▲ SET NETWORK POINT

REGISTERED PROFESSIONAL LAND SURVEYOR

Frank H. Reading

OREGON
JANUARY 15, 2002
FRANK H. READING
59616LS

EXPIRATION DATE: 12-31-04

METRIC SURVEY

SCALE 1:1000

20 10 0 20 40 60 80 100 METERS

TO CONVERT METERS TO FEET DIVIDE BY 0.3048

OREGON DEPARTMENT OF TRANSPORTATION

HORIZONTAL CONTROL, RECOVERY, RETRACEMENT,
AND RIGHT OF WAY MONUMENTATION MAP

10TH STREET - EASTGATE (PENDLETON) SECTION
PENDLETON HIGHWAY
UMATILLA COUNTY

FOR O.D.O.T. REGION 5 80788 KIK RD., HERMISTON, OR. 97838

JUNE 18, 2002 SHEET 3 OF 3

RECEIVED BY
Umatilla County Surveyors
Date 4-04
Rec'd By KK
No 04-80-B

04-080-B