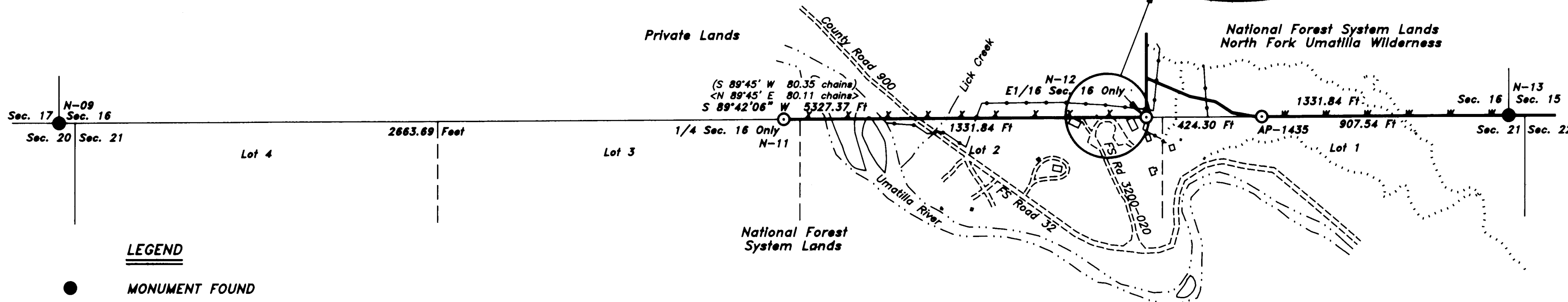
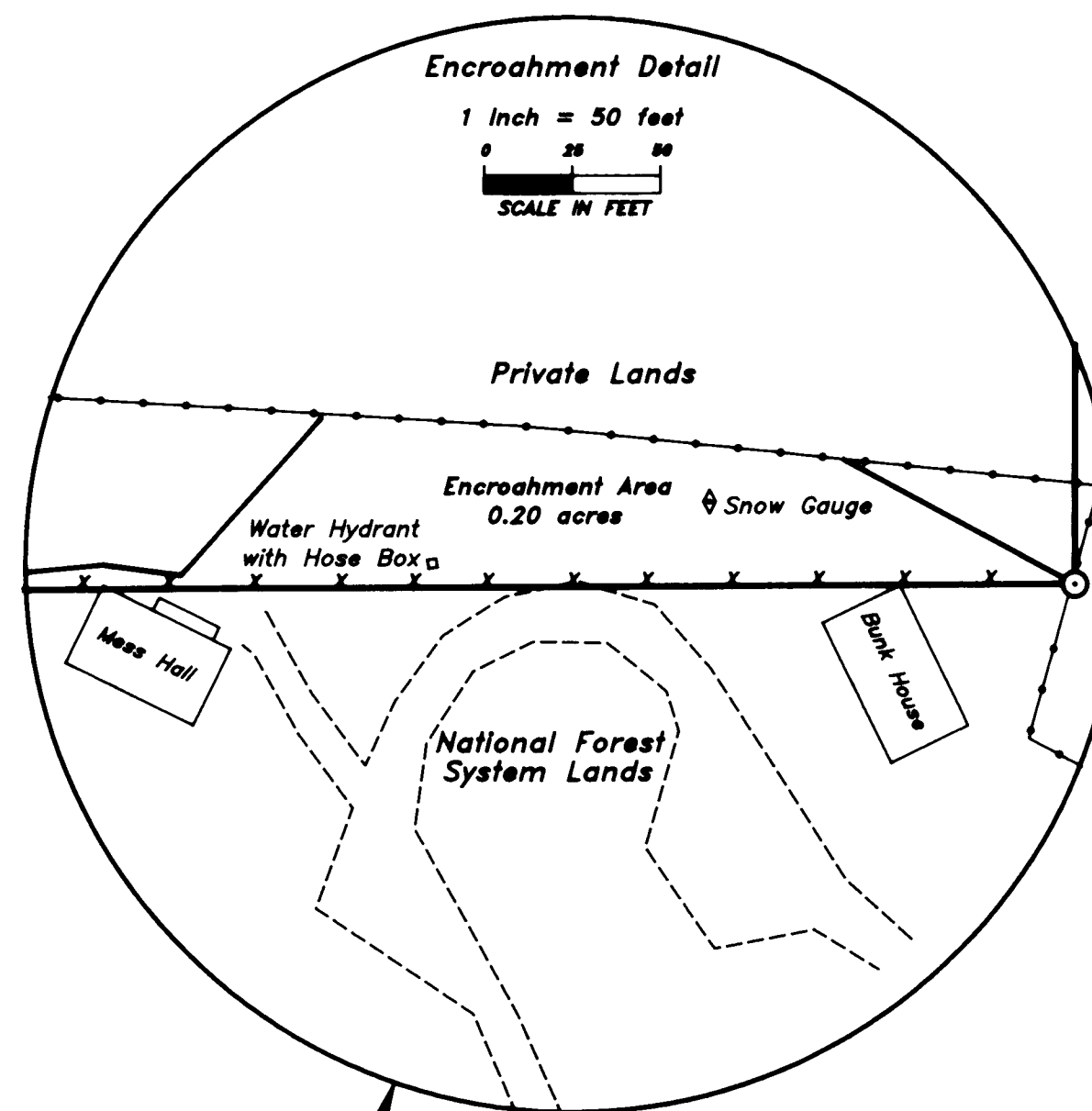


Survey for
 Umatilla National Forest
 of
 South Section Line of Section 16
 T. 3 N., R. 37 E., Willamette Meridian
 Umatilla County, Oregon
 June - September, 2004



LEGEND

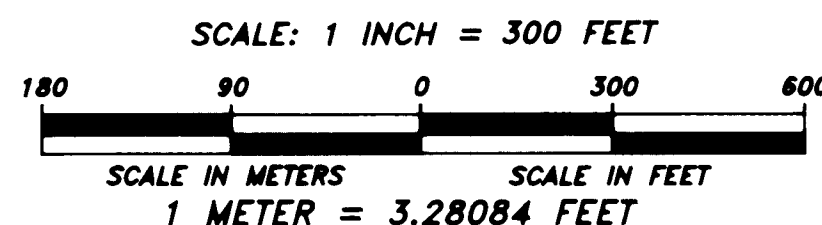
- MONUMENT FOUND
- MONUMENT SET
- TRAIL
- +— FENCE
- x— POSTED PROPERTY BOUNDARY
- w— POSTED WILDERNESS BOUNDARY
- () RECORD MEASUREMENT (PERSHIN, 1879)
- < > RECORD MEASUREMENT <CAMPBELL, 1900>

I CERTIFY THAT THIS SURVEY WAS PERFORMED AT THE REQUEST OF THE UMATILLA NATIONAL FOREST
David A. Schlaich 11/15/04
 FOREST SUPERVISOR DATE

REGISTERED
 PROFESSIONAL
 LAND SURVEYOR
David A. Schlaich
 OREGON
 JULY 16, 1987
 DAVID A. SCHLAICH
 2308
 RENEWAL DATE: 06/30/2006

I, David A. Schlaich, a Registered Land Surveyor in the state of Oregon, hereby certify that this plat and the notes hereon are a true and correct representation of a survey I conducted from June 14 to September 30 of 2004, at the request of the Umatilla National Forest, in accordance with the statutes of the state of Oregon and the Bureau of Land Management's 1973 Manual of Surveying Instructions.

David A. Schlaich 11/15/2004
 DAVID A. SCHLAICH -- RLS 2308
 UMATILLA NATIONAL FOREST
 2517 S.W. HALEY AVENUE
 PENDLETON, OREGON 97801
 PHONE: (541) 278-3716



RECEIVED BY
 Umatilla County Surveyor
 Date 11-04
 Rec'd by KK
 No. 04-211-B

Survey for
Umatilla National Forest
of
South Section Line of Section 16
T. 3 N., R. 37 E., Willamette Meridian
Umatilla County, Oregon
June - September, 2004

Narrative

Purpose:

The purpose of this survey was to monument and mark a portion of the boundary between Private and National Forest System Lands. In addition that portion of the North Fork Umatilla Wilderness Boundary which followed the south line of section 16 was also monumented and marked.

History:

1879, George S. Pershin, U.S. Deputy Surveyor, surveyed section 16 while performing a partial subdivision of the township under General Land Office Contract No. 340.

1900, William E. Campbell, U.S. Deputy Surveyor, retraced the south line of section 16 while completing the subdivision of the township and set closing corners for section 21 under General Land Office Contract No. 718.

1980, John P. Lee, BLM Cadastral Surveyor, remonumented the section corner of sections 15 and 16 from original evidence.

1984, The North Fork Umatilla Wilderness is entered into the National Wilderness Preservation System by the Act of June 26, 1984 (Public Law 98-328).

1987, The legal boundary description of the North Fork Umatilla Wilderness is approved by the Regional Forester, Pacific Northwest Region of the U.S. Forest Service.

1989, David Evans and Associates establish the Horizontal Position of stations "ROUND", "WHITMAN" and "C-486 ECC" while conducting a GPS Geodetic Control Survey for the Umatilla and Willowa-Whitman National Forests. This survey is readjusted in 1992 by David Evans and Associates to the NAD83(1991) datum (survey on file at the Umatilla and Willowa-Whitman National Forests).

2002, David A. Schlaich, Registered Land Surveyor No. 2308, remonumented the section corner of sections 16 and 17 from original evidence (Umatilla County Surveyor's No. 02-295-R)

Procedures:

The survey was conducted using 3 Trimble 4600LS GPS Receivers (L1 frequency) and a Topcon GPT-6005C Total Station.

The GPS measurements were conducted using fast static techniques with stations "ROUND" (45°39'10.02807" North; 118°07'36.17526" West; Orthometric Elevation 4652.44 feet), "WHITMAN" (45°40'32.30772" North; 118°08'56.01446" West; Orthometric Elevation 4659.12 feet), and "C-486 ECC" (45°32'44.98429" North; 118°18'34.42020" West; Orthometric Elevation 2371.61 feet) being used to provide horizontal (NAD83(91)) and vertical control (NGVD1929) for the survey. The GPS measurements were processed using Trimble's Geomatics Office Software (version 1.50).

All GPS measurements were made in accordance with "Standards and Guidelines For Cadastral Surveys Using Global Positioning Methods" dated May 9, 2001, version 1.0 by U.S. Department of Agriculture, Forest Service and U.S. Department of Interior, Bureau of Land Management.

The Topcon GPT-6005C Total Station was used to run random traverses between GPS established points, set the corners established by this survey and make measurements to bearing trees and reference monuments.

Bureau of Land Management's WinCMM (version 2.0.2) software program was used to adjust the traverse measurements using a least squares adjustment, compute corner positions, corner moves and posting offsets.

Distance measurements to the bearing trees were measured at the tree's side center 1 foot above the root crown. Bearing tree diameter's were measured at breast height.

A diligent search was conducted during the course of this survey for the 1/4 section corner of section 16, the 1/4 section corner of section 21, and the closing corner of sections 20 and 21. No evidence of these corners was found so I declare them to be lost.

Because sections 20 and 21 are National Forest System Lands I determine that their is no need to reestablish the closing corner of sections 20 and 21 or the 1/4 section corner of section 21 at this time. I do reestablish the 1/4 section corner of section 16 by proportionate measurement.

During the course of this survey I discovered that a portion of the U.S. Forest Service's Corporation Guard Station encroaches on to the adjacent private land. The nature of the encroachment consists of a lawn area approximately 0.20 acres in size, a snow gauge, water hydrant with hose box, and a portion of the Mess Hall. In addition the 1961 plans for the construction of the Mess Hall and Bunk House show that the underground waterlines for these structures were placed on the north side of the buildings.

The portion of the property boundary posted was by setting 6 foot steel U channel posts with "National Forest Property Boundary" signs attached within one foot of the surveyed boundary.

The description utilized to locate the wilderness boundary was obtained from the open 2320 Files located in the Supervisor's Office of the Umatilla National Forest located at Pendleton, Oregon.

This segment of the wilderness boundary as described follows the North section line of section 21 to a point where the section line intersects the 2400 foot contour (AP-1435).

I established AP-1435 of the North Fork Umatilla Wilderness Boundary on the section line between sections 16 and 21 at elevation 2400 feet as described in the legal boundary description.

The Wilderness Boundary was posted by setting 6 foot steel U channel posts with "National Forest Wilderness" signs attached within one foot of the surveyed boundary.

The field notes for this survey are on file at the Supervisor's Office of the Umatilla National Forest located at Pendleton, Oregon.

N-08

Section corner of sections 16 and 17

History of original corner establishment:

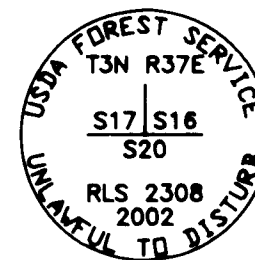
1879, George S. Pershin, U.S. Deputy Surveyor, while surveying a portion of the township under General Land Office Contract No. 340 established the corner as follows:
Set Basalt Stone 16 X 12 X 7 on N.W. face of spur for cor. to Sec. 16, 17, 20 & 21
A Fir 24 in. di. brs. N. 48° E. 166 lks dist
no other green trees near

1900, William E. Campbell, U.S. Deputy Surveyor, while retracing the south boundary of sections 13 - 18 and completing the subdivision of the township under General Land Office Contract No. 718 described the corner as follows:
S. 89°45' W., on a blank line, S. bdy. of sec. 16; at 79.22 chs. intersect temp. closing cor. of secs. 20 and 21; and at 80.11 chs. intersect the cor. of secs. 16 and 17, which is a basalt stone 16 X 12 X 7 ins. on N.W. face of spur. marked and witnessed as described by the surveyor-general.

2002, David A. Schlaich, Registered Land Surveyor No. 2308, found on the northwest slope of a spur ridge a basalt stone 17" X 12" X 7", projecting 4" out of the ground, with 4 notches on the East edge and 3 notches on the southerly end of the top edge, from which:
28" Douglas Fir Snag bears N. 53° E., 106.3 feet (record N. 48° E. 166 links), with rotted out partially healed blaze (no scribing remains).
Replaced the stone with a 2 1/2" by 30" aluminum pipe, with a 3 1/4" aluminum cap set 25" in the ground, with a white SURV-KAP magnetic reference monument set in the bottom of the hole. Buried original stone on the North side of the aluminum monument, from which:
14" Douglas Fir, with a triple top, bears N. 67° E., 84.1 feet, scribed "T3N R37E S16"BT".
RM, 5/8" by 24" rebar with a 1 1/4" diameter yellow plastic cap stamped "UMATILLA N.F."; set 13" in the ground, bears N. 78°19' E., 36.39 feet.
6" Douglas Fir, bears S. 46 1/2° E., 14.3 feet, scribed "X"BT".
9" Western Larch, bears N. 47 1/2° W., 33.3 feet, scribed "T3N R37E S17"BT".
The bearing trees are double blazed and have a 3/4" diameter brass washer stamped "RLS 2308" nailed to the lower blaze between the "BT" scribing.

Description of corner evidence found:

Found a 2 1/2" aluminum pipe, with a 3 1/4" aluminum cap, projecting 5" out of the ground, marked as shown, from which:
28" Douglas Fir Snag bears N. 53° E., 106.3 feet, with rotted out partially healed blaze (record N. 48° E. 166 links = 109.6 feet).
14" Douglas Fir, with a triple top, bears N. 67° E., 84.1 feet, scribing "T3N R37E S16"BT" visible on double blaze with 3/4" brass washer "RLS 2308" nailed to the lower blaze.
RM, 5/8" rebar, with a 1 1/4" yellow plastic cap stamped "UMATILLA N.F."; projecting 11" out of the ground, N. 78°19' E., 36.39 feet.
6" Douglas Fir, bears S. 46 1/2° E., 14.3 feet, scribing "X"BT" visible on double blaze with 3/4" brass washer "RLS 2308" nailed to the lower blaze.
9" Western Larch, bears N. 47 1/2° W., 33.3 feet, scribing "T3N R37E S17"BT" visible on double blaze with 3/4" brass washer "RLS 2308" nailed to the lower blaze.



Description of monument and accessories I established to perpetuate the original location of this corner:

DATUM: NAD83(1991)

STATE PLANE COORDINATES: Oregon North Zone in International Feet

Latitude	Longitude	Northing(y)	Easting(x)
45°43'48.37256" North	118°12'42.32649" West	760561.217	8786353.802

N-11

1/4 Section corner of section 16

History of original corner establishment:

1879, George S. Pershin, U.S. Deputy Surveyor, while surveying a portion of the township under General Land Office Contract No. 340 established the corner as follows:
Set Basalt Stone 17 X 10 X 5 on level river bottom for 1/4 Sec. cor.
A Fir 28 in. di. brs. N. 40° W. 25 lks dist
A Maple 6 in. di. brs. South 24 lks dist

1900, William E. Campbell, U.S. Deputy Surveyor, while retracing the south boundary of sections 13 - 18 and completing the subdivision of the township under General Land Office Contract No. 718 described the corner as follows:
The point for the 1/4 sec. cor. S bdy. of sec. 16 on heavily timbered bottom at base of mountain: after renewed search fail to find any trace of this old cor. and set an ironstone 15 X 12 X 8 ins. 10 ins. in the ground, for 1/4 sec. cor., marked 1/4 on N. face, from which

A Fir 48 ins. diam. bears N. 22 1/2° E. 39 lks. dist., marked 1/4 S.16, B.T.

Description of corner evidence found:

None

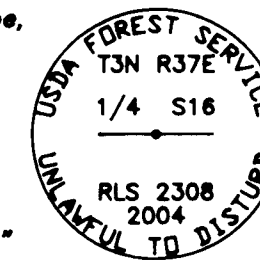
Description of monument and accessories I established to perpetuate the original location of this corner:

Set at proportionate distance a 2 1/2" by 30" aluminum pipe, with a 3 1/4" aluminum cap, 20" in the ground, surrounded with a ring of stones, marked as shown, from which:
7" Ponderosa Pine, bears N. 70 3/4° E., 50.1 feet scribed "1/4 S16" "BT" on double blaze with 3/4" brass washer "RLS 2308" nailed to the lower blaze.
11" Ponderosa Pine, bears S. 71 1/4° E., 62.3 feet scribed "X" "BT" on double blaze with 3/4" brass washer "RLS 2308" nailed to the lower blaze.
3 1/2" BPA aluminum cap stamped "B/L AZ", set in concrete flush with the ground, bears N. 60°09' E., 316.4 feet. The BPA cap is located north of the river, 7 feet southwesterly of County Road 900. A yellow fiberglass post with "Survey Marker" decal, bears N. 60° W., 2.0 feet from the BPA cap.

DATUM: NAD83(1991)

STATE PLANE COORDINATES: Oregon North Zone in International Feet

Latitude	Longitude	Northing(y)	Easting(x)
45°43'48.50948" North	118°12'04.78237" West	760650.670	8789015.494



David A. Schlaich
OREGON
JULY 16, 1987
DAVID A. SCHLAICH
2308

RENEWAL DATE: 06/30/2006

RECEIVED BY
Umatilla County Surveyor
Date 11-04
Rec'd by KK
No. 04-211-B

Survey for
Umatilla National Forest
of
South Section Line of Section 16
T. 3 N., R. 37 E., Willamette Meridian
Umatilla County, Oregon
June - September, 2004

N-12
E 1/16 Section corner of section 16

History of original corner establishment:
None

Description of corner evidence found:
None

Description of monument and accessories I established to perpetuate the original location of this corner:

Set a 2 1/2" by 28" aluminum pipe, with 3 1/4" aluminum cap, 22" in the ground, marked as shown, from which:
23" Ponderosa Pine, bears N. 52 3/4" E., 25.3 feet scribed "E1/16 S16" "BT" on double blaze with 3/4" brass washer
"RLS 2308" nailed to the lower blaze.
28" Douglas Fir bears N. 5' W., 28.1 feet, scribed "E1/16 S16" "BT" on double blaze with 3/4" brass washer
"RLS 2308" nailed to the lower blaze.



DATUM: NAD83(1991)
STATE PLANE COORDINATES: Oregon North Zone in International Feet

Latitude	Longitude	Northing(y)	Easting(x)
45°43'48.57795" North	118°11'46.01030" West	760695.526	8790346.336

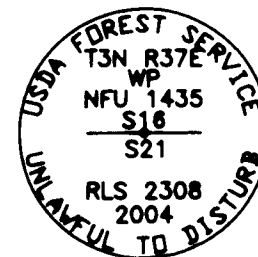
AP-1435
North Fork Umatilla Wilderness

History of original corner establishment:
None

Description of corner evidence found:
None

Description of monument and accessories I established to perpetuate the original location of this corner:

Set on the section line at elevation 2400 feet, a 2 1/2" by 28" aluminum pipe, with 3 1/4" aluminum cap, flush with the ground, marked as shown, from which:
16" Douglas Fir, bears N. 76 3/4" E., 43.9 feet scribed "WP S16" "BT" on double blaze with 3/4" brass washer
"RLS 2308" nailed to the lower blaze.
18" Douglas Fir bears S. 23 1/4" E., 15.4 feet, scribed "WP S21" "BT" on double blaze with 3/4" brass washer
"RLS 2308" nailed to the lower blaze.



DATUM: NAD83(1991)
STATE PLANE COORDINATES: Oregon North Zone in International Feet

Latitude	Longitude	Northing(y)	Easting(x)
45°43'48.59963" North	118°11'40.02978" West	760709.822	8790770.323

REGISTERED
PROFESSIONAL
LAND SURVEYOR
David A. Schlaich
OREGON
JULY 16, 1987
DAVID A. SCHLAICH
2308
RENEWAL DATE: 06/30/2008

N-13
Section corner of sections 15 and 16

History of original corner establishment:

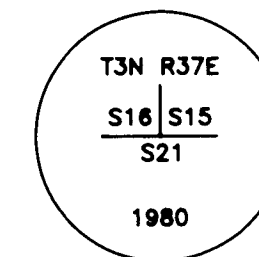
1879, George S. Pershin, U.S. Deputy Surveyor, while surveying a portion of the township under General Land Office Contract No. 340 established the corner as follows:
Set Basalt Stone 18 X 8 X 6 on South face of bluff for cor. to Sec. 15, 16, 21 & 22
Pine 30 in. di. brs. N. 64° E. 184 lks dist
Fir 8 in. di. brs. S. 55° E. 194 lks dist
Pine 16 in. di. brs. S. 30° W. 91 lks dist
No tree near in N.W.

1900, William E. Campbell, U.S. Deputy Surveyor, while retracing the south boundary of sections 13 - 18 and completing the subdivision of the township under General Land Office Contract No. 718 described the corner as follows:
S. 89°45' W., on a blank line, S. bdy. of sec. 15; at 79.09 chs. the temp. closing cor. of secs. 21 and 22 bears N 5 lks. dist.; and at 79.99 chs. the cor. of secs. 15 and 16, reestablished by me this day, a basalt stone 8 X 6 X 4 1/2 ins. above ground, marked and witnessed as described in the field notes of survey of subdivision returned to the surveyor general, bears N. 5 lks. dist.

1980, John P. Lee, BLM Cadastral Surveyor, described the corner as follows:
The cor. of secs. 15 and 16 only, monumented with the original basalt stone, 18 x 8 x 6 ins., firmly set 13 ins. in the ground, mkd. with 3 notches on NE. and NW. edges, from which the remains of the original bearing trees:
A pine, 39 ins. diam., bears N. 72 1/2° E., 212 lks. dist., with scribe marks R37 S1 B visible on partially healed blaze. (Record, N. 71° E., 209 lks.)
At the corner point
Set an iron post, 28 ins. long 2 1/2 ins. diam., 22 ins. in the ground, with brass cap
from which a new bearing tree
A pine, 21 ins. diam., bears N. 12 3/4° W. 86 lks. dist., mkd. T3N R37E S16 BT.
Deposit corner stone alongside iron post.

Description of corner evidence found:

Found a 2 1/2" iron pipe, with 3 1/4" BLM brass cap, projecting 6" out of the ground, marked as shown, from which:
38" Ponderosa Pine, bears N. 70 1/2° E., 139.9 feet, with scribing visible on chopped open blaze (Lee's Record N. 72 1/2° E.).
26" Ponderosa Pine, bears N. 14° W., 56.8 feet, with healed blaze (Lee's Record N. 12 3/4° W.).



Description of monument and accessories I established to perpetuate the original location of this corner:

New References:
6" Ponderosa Pine, bears N. 69° W., 40.6 feet scribed "T3N R37E S16" "BT" on double blaze with 3/4" brass washer "RLS 2308" nailed to the lower blaze.
RM, 5/8" by 24" rebar with a 1 1/4" diameter red plastic cap stamped "UMATILLA N.F.", set 22" in the ground, bears S. 89°48' W., 45.75 feet.

DATUM: NAD83(1991)
STATE PLANE COORDINATES: Oregon North Zone in International Feet

Latitude	Longitude	Northing(y)	Easting(x)
45°43'48.64640" North	118°11'27.23820" West	760740.467	8791677.176