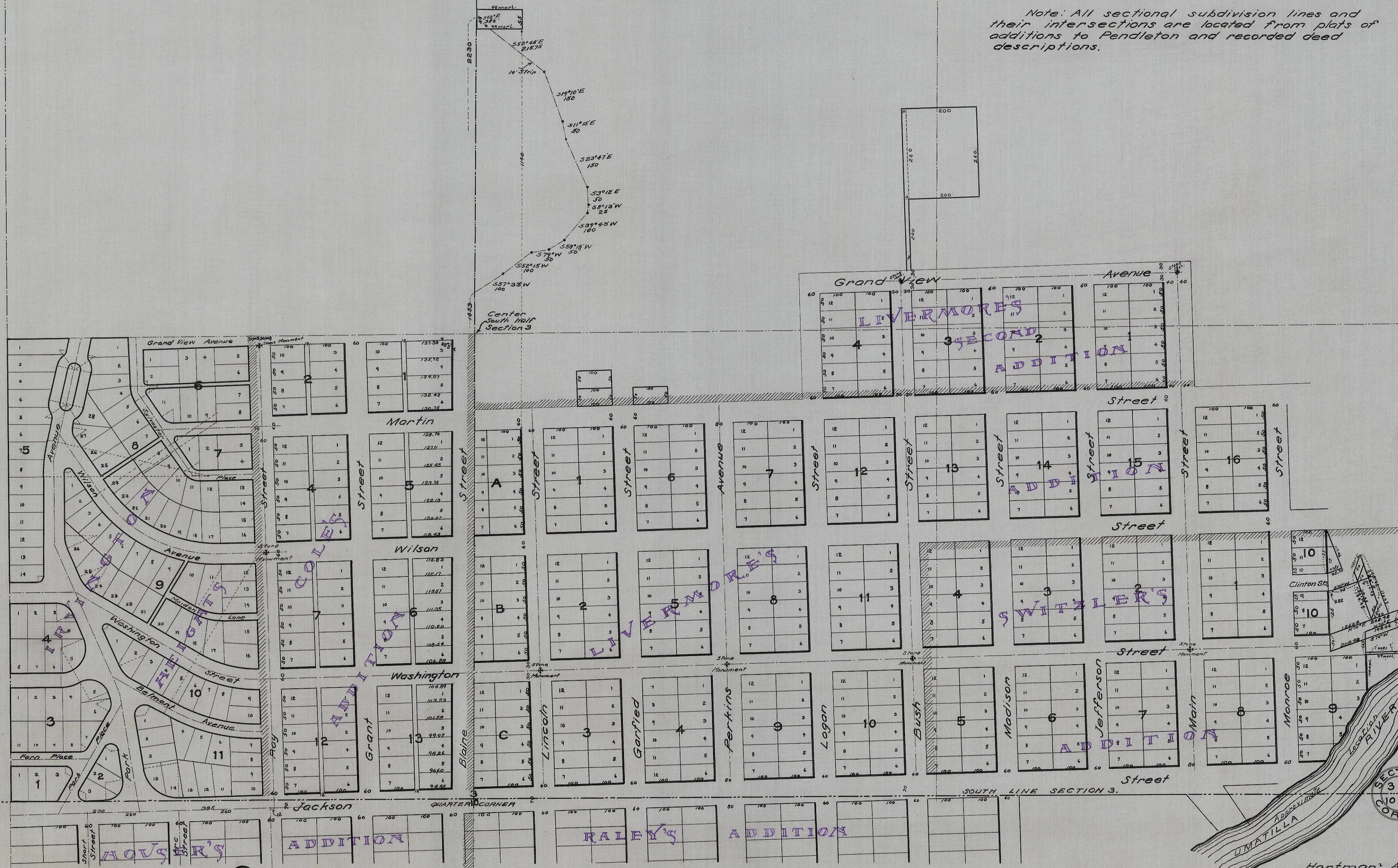


SE<sup>1</sup> & E<sup>2</sup>SW<sup>4</sup> SECTION 3  
 T<sup>2</sup>N. R<sup>32</sup>E. W<sup>1</sup>M.  
 Scale 1 inch = 200 Feet

Note: All sectional subdivision lines and their intersections are located from plats of additions to Pendleton and recorded deed descriptions.



There is no record showing width of Mallard St. (formerly Blaine St.) north of Jackson St. and length of fractional lot in Block A, B, C, Livermore's Add. to Pendleton.

This L-shaped distance across said st. is about 60'. Assume width as 60'. Width of said st. along north line of Jackson St. is  $y = \frac{60}{3 \frac{1}{2} \times 88.05} = 60.03'$

Let: length of South Line of Fred. Lot 7 Block C Livermore's Add. Distance of northerly produced center line of Tay St. in House's Add. to the west line of Lincoln St. measured along north line of Jackson St. is  $12 \times 50 \times 2 \times 12 + 100 \times 12 + 99.95 + 600 \times 2 + 2 \times 7 \times 100 = 30 + 600 + 60 + 600 \times 2 + 580.98 = 750$   
 $x = 750 - 590.98 = 690.2'$

Hartman's Abstract Co.,  
 Pendleton Oregon

05-71-B

4.50