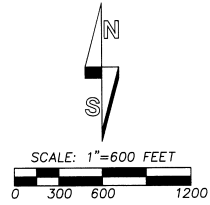
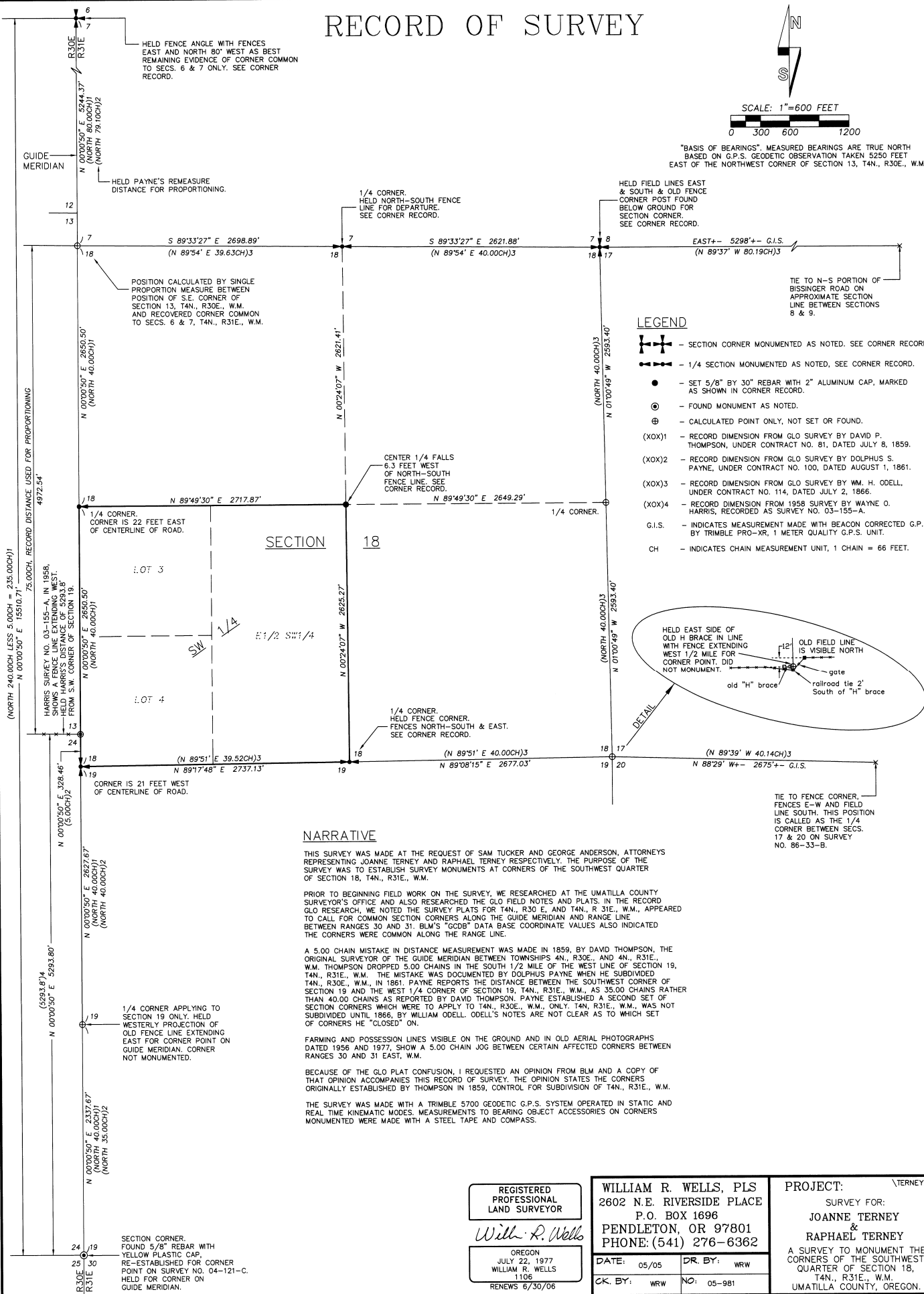


# RECORD OF SURVEY



"BASIS OF BEARINGS". MEASURED BEARINGS ARE TRUE NORTH BASED ON G.P.S. GEODETIC OBSERVATION TAKEN 5250 FEET EAST OF THE NORTHWEST CORNER OF SECTION 13, T4N., R30E., W.M.

RECEIVED BY  
 Umatilla County Survey  
 Date: 6-05  
 Rec'd by: [Signature]  
 No. 05-123-B



- LEGEND**
- ⊕ - SECTION CORNER MONUMENTED AS NOTED. SEE CORNER RECORD.
  - ⊙ - 1/4 SECTION MONUMENTED AS NOTED, SEE CORNER RECORD.
  - - SET 5/8" BY 30" REBAR WITH 2" ALUMINUM CAP, MARKED AS SHOWN IN CORNER RECORD.
  - ⊙ - FOUND MONUMENT AS NOTED.
  - ⊕ - CALCULATED POINT ONLY, NOT SET OR FOUND.
  - (XOX)1 - RECORD DIMENSION FROM GLO SURVEY BY DAVID P. THOMPSON, UNDER CONTRACT NO. 81, DATED JULY 8, 1859.
  - (XOX)2 - RECORD DIMENSION FROM GLO SURVEY BY DOLPHUS S. PAYNE, UNDER CONTRACT NO. 100, DATED AUGUST 1, 1861.
  - (XOX)3 - RECORD DIMENSION FROM GLO SURVEY BY WM. H. ODELL, UNDER CONTRACT NO. 114, DATED JULY 2, 1866.
  - (XOX)4 - RECORD DIMENSION FROM 1958 SURVEY BY WAYNE O. HARRIS, RECORDED AS SURVEY NO. 03-155-A.
  - G.I.S. - INDICATES MEASUREMENT MADE WITH BEACON CORRECTED G.P.S. BY TRIMBLE PRO-XR, 1 METER QUALITY G.P.S. UNIT.
  - CH - INDICATES CHAIN MEASUREMENT UNIT, 1 CHAIN = 66 FEET.

**NARRATIVE**

THIS SURVEY WAS MADE AT THE REQUEST OF SAM TUCKER AND GEORGE ANDERSON, ATTORNEYS REPRESENTING JOANNE TERNEY AND RAPHAEL TERNEY RESPECTIVELY. THE PURPOSE OF THE SURVEY WAS TO ESTABLISH SURVEY MONUMENTS AT CORNERS OF THE SOUTHWEST QUARTER OF SECTION 18, T4N., R30E., W.M.

PRIOR TO BEGINNING FIELD WORK ON THE SURVEY, WE RESEARCHED AT THE UMATILLA COUNTY SURVEYOR'S OFFICE AND ALSO RESEARCHED THE GLO FIELD NOTES AND PLATS. IN THE RECORD GLO RESEARCH, WE NOTED THE SURVEY PLATS FOR T4N., R30E., AND T4N., R31E., W.M., APPEARED TO CALL FOR COMMON SECTION CORNERS ALONG THE GUIDE MERIDIAN AND RANGE LINE BETWEEN RANGES 30 AND 31. BLM'S "GODB" DATA BASE COORDINATE VALUES ALSO INDICATED THE CORNERS WERE COMMON ALONG THE RANGE LINE.

A 5.00 CHAIN MISTAKE IN DISTANCE MEASUREMENT WAS MADE IN 1859, BY DAVID THOMPSON, THE ORIGINAL SURVEYOR OF THE GUIDE MERIDIAN BETWEEN TOWNSHIPS 4N., R30E., AND 4N., R31E., W.M. THOMPSON DROPPED 5.00 CHAINS IN THE SOUTH 1/2 MILE OF THE WEST LINE OF SECTION 19, T4N., R31E., W.M. THE MISTAKE WAS DOCUMENTED BY DOLPHUS PAYNE WHEN HE SUBDIVIDED T4N., R30E., W.M. IN 1861. PAYNE REPORTS THE DISTANCE BETWEEN THE SOUTHWEST CORNER OF SECTION 19 AND THE WEST 1/4 CORNER OF SECTION 19, T4N., R31E., W.M., AS 35.00 CHAINS RATHER THAN 40.00 CHAINS AS REPORTED BY DAVID THOMPSON. PAYNE ESTABLISHED A SECOND SET OF SECTION CORNERS WHICH WERE TO APPLY TO T4N., R30E., W.M., ONLY. T4N., R31E., W.M., WAS NOT SUBDIVIDED UNTIL 1866, BY WILLIAM ODELL. ODELL'S NOTES ARE NOT CLEAR AS TO WHICH SET OF CORNERS HE "CLOSED" ON.

FARMING AND POSSESSION LINES VISIBLE ON THE GROUND AND IN OLD AERIAL PHOTOGRAPHS DATED 1956 AND 1977, SHOW A 5.00 CHAIN JOG BETWEEN CERTAIN AFFECTED CORNERS BETWEEN RANGES 30 AND 31 EAST, W.M.

BECAUSE OF THE GLO PLAT CONFUSION, I REQUESTED AN OPINION FROM BLM AND A COPY OF THAT OPINION ACCOMPANIES THIS RECORD OF SURVEY. THE OPINION STATES THE CORNERS ORIGINALLY ESTABLISHED BY THOMPSON IN 1859, CONTROL FOR SUBDIVISION OF T4N., R31E., W.M.

THE SURVEY WAS MADE WITH A TRIMBLE 5700 GEODETIC G.P.S. SYSTEM OPERATED IN STATIC AND REAL TIME KINEMATIC MODES. MEASUREMENTS TO BEARING OBJECT ACCESSORIES ON CORNERS MONUMENTED WERE MADE WITH A STEEL TAPE AND COMPASS.

REGISTERED PROFESSIONAL LAND SURVEYOR <i>William R. Wells</i> OREGON JULY 22, 1977 WILLIAM R. WELLS 1106 RENEWS 6/30/06	WILLIAM R. WELLS, PLS 2602 N.E. RIVERSIDE PLACE P.O. BOX 1696 PENDLETON, OR 97801 PHONE: (541) 276-6362	PROJECT: TERNEY2ROT SURVEY FOR: JOANNE TERNEY & RAPHAEL TERNEY A SURVEY TO MONUMENT THE CORNERS OF THE SOUTHWEST QUARTER OF SECTION 18, T4N., R31E., W.M. UMATILLA COUNTY, OREGON.
	DATE: 05/05 CK. BY: WRW	DR. BY: WRW NO: 05-981