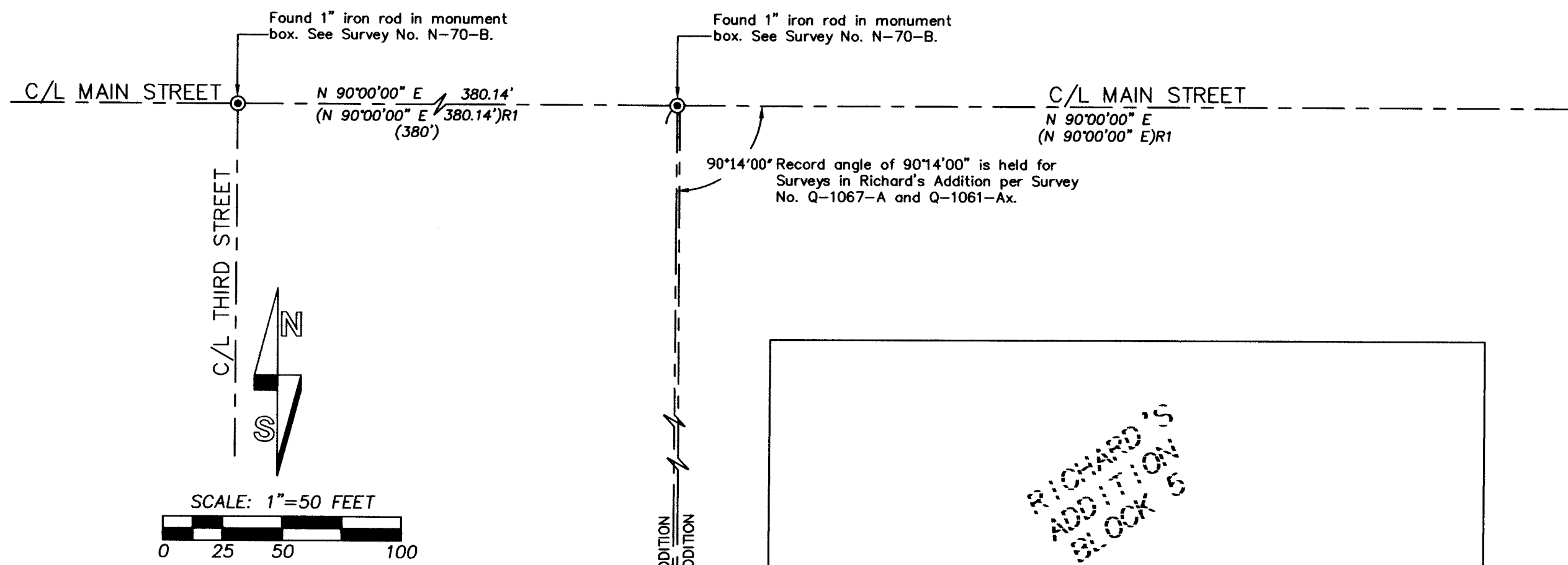


RECORD OF SURVEY

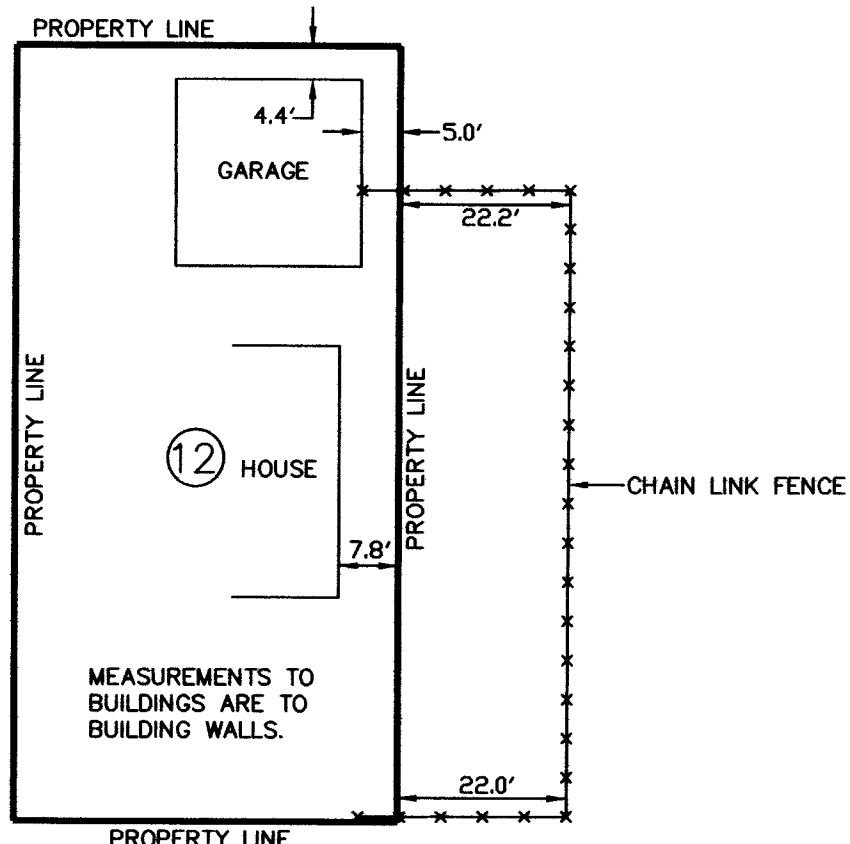


"BASIS OF BEARINGS": N 90°00'00" E BETWEEN MONUMENTS FOUND AT THE INTERSECTION OF MAIN AND 3RD AND MAIN AND 4TH STREET, PER SURVEY NO. 04-170-B.

MONUMENT NOTES:

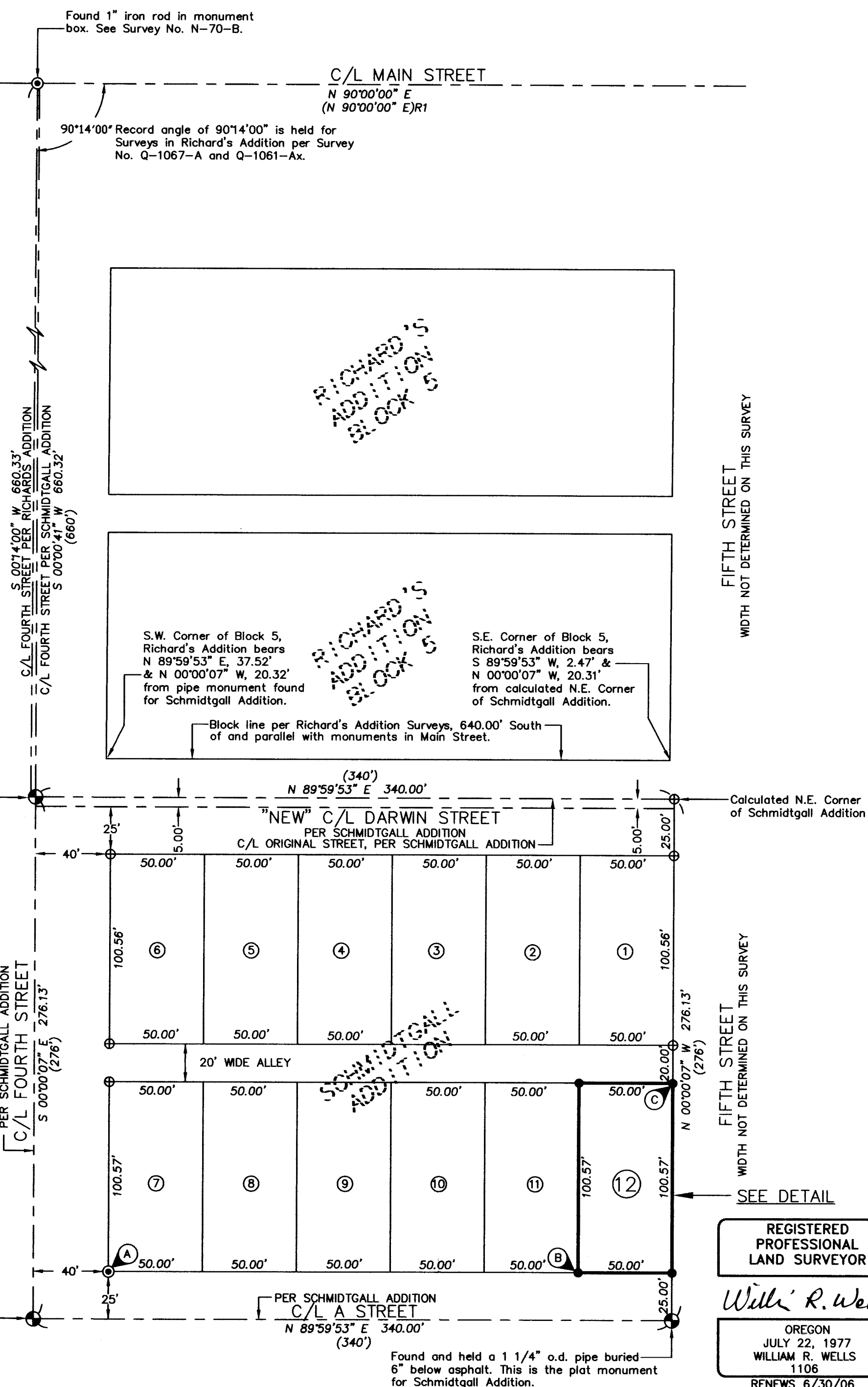
- Ⓐ - FOUND 1/2" SLICK REBAR, BEARS N 50°10' W, 0.25' FROM CALCULATED POSITION. BELIEVED TO BE SET ON SURVEY NO. Q-1068-AX.
- Ⓑ - SET WITNESS MONUMENT N 00°00'00" W, 1.00 FEET FROM TRUE CORNER POINT TO AVOID CONCRETE SIDEWALK.
- Ⓒ - FOUND 1" IRON ROD, SET IN CONCRETE, 3" BELOW GROUND. THIS ROD BEARS S 16°45' W, 0.6' FROM CORNER POINT SET. CORNER POINT FALLS ON CONCRETE. FOR THE CORNER MONUMENT, SET A LEAD PLUG IN 1/4 INCH DRILL HOLE IN CONCRETE AND ATTACHED A 3/4 INCH BRASS WASHER STAMPED "PLS 1106" TO THE LEAD PLUG WITH A SCREW. BRASS WASHER IS ABOUT 4 INCHES BELOW GROUND LEVEL.

"Point of Beginning" for Schmidt Gall Addition. Found and held a 2 1/2" o.d. pipe buried 8" below asphalt. The projected intersection of Fourth Street, (per Richard's Addition Surveys) bears S 89°59'53" W -2.56 feet. Also found a 1/2" slick pin, severely bent, at the approximate street intersection per Richard's Addition. Found pin is unusable as a monument.



Found and held a 1 1/4" o.d. pipe buried 6" below asphalt. This is the plat monument for Schmidt Gall Addition. Also found a 1/2" pin, badly bent, alongside of pipe.

NOTE: AREA WEST OF FOURTH STREET CENTERLINE, BETWEEN DARWIN AND A STREETS APPEARS TO BE DEVELOPED.



FIFTH STREET WIDTH NOT DETERMINED ON THIS SURVEY

FIFTH STREET WIDTH NOT DETERMINED ON THIS SURVEY

SEE DETAIL

REGISTERED PROFESSIONAL LAND SURVEYOR
William R. Wells
OREGON
JULY 22, 1977
WILLIAM R. WELLS
1106
RENEWS 6/30/06

LEGEND

- - SET 5/8" BY 30" REBAR WITH 1 1/4" YELLOW PLASTIC CAP MARKED "OR PLS 1106 WA PLS 17372", UNLESS OTHERWISE NOTED.
- ⊙ - FOUND MONUMENT AS NOTED.
- ⊕ - FOUND PIPE MONUMENT AS NOTED, FROM PLAT OF SCHMIDTGALL ADDITION. DROVE 5/8" BY 24" REBAR IN CENTER OF PIPE, FLUSH WITH THE TOP OF ASPHALT, TO PERPETUATE.
- ⊕ - CALCULATED POINT ONLY, NOT SET OR FOUND.
- (XOX) - RECORD DIMENSION FROM TOWN PLATS.
- (XOX)R1 - RECORD DIMENSION FROM SURVEY NO. 04-170-B.
- ⓪ - INDICATES LOT NUMBER IN SCHMIDTGALL ADDITION.

NOTE: RECORD DIMENSIONS FOR LOTS 1 THROUGH 12 IN SCHMIDTGALL ADDITION ARE 50.00 FEET EAST-WEST BY 100.50 FEET NORTH-SOUTH.

NARRATIVE:

THIS SURVEY WAS MADE AT THE REQUEST OF JIM KEETON TO MONUMENT THE BOUNDARY OF LOT 12, SCHMIDTGALL ADDITION TO THE CITY OF ATHENA. THE RECORD DESCRIPTION USED FOR THIS SURVEY IS CONTAINED IN BARGAIN AND SALE DEED RECORDED AT REEL 477, PAGE 0039, INSTRUMENT NUMBER 2005-4770039, UMATILLA COUNTY DEED RECORDS.

CONTROLLING MONUMENTS HELD AND RECOVERED FOR THE SURVEY ARE NOTED ON THIS RECORD OF SURVEY. WE RECOVERED THE ORIGINAL SCHMIDTGALL ADDITION PLAT MONUMENTS AT THE NORTHWEST, SOUTHWEST AND SOUTHEAST CORNERS OF PLAT AS DESCRIBED IN THE SURVEYORS NARRATIVE ON THE PLAT. I ESTABLISHED THE NORTHEAST CORNER OF THE SCHMIDTGALL PLAT EXTENTS BY HOLDING THE SAME BEARING AND DISTANCE OBSERVED BETWEEN PIPE MONUMENTS FOUND ALONG FOURTH STREET CENTERLINE ON THE WEST SIDE OF THE PLAT. THE BEARING AND DISTANCE WAS APPLIED AT THE RECOVERED PIPE AT THE SOUTHEAST CORNER OF THE SUBDIVISION PLAT.

IT SHOULD BE NOTED THAT THE CENTERLINE OF FOURTH STREET HAS TWO DIFFERENT ALIGNMENTS. ONE ALIGNMENT IS BASED ON RECORD SURVEYS IN RICHARD'S ADDITION, WHERE A RECORD ANGLE OF 90°14'00" CLOCKWISE IS MEASURED FROM THE 1" ROD MONUMENT AT FOURTH AND MAIN STREETS. THE OTHER ALIGNMENT FOR FOURTH STREET IS DEVELOPED RELATIVE TO THE MONUMENTS FOUND IN FOURTH STREET FOR SCHMIDTGALL ADDITION AND THE BEARING BETWEEN THE POINT OF BEGINNING FOR SCHMIDTGALL ADDITION AND THE 1" ROD MONUMENT IN MAIN AND FOURTH STREET. THE RELATIONSHIP BETWEEN RICHARD'S AND SCHMIDTGALL ADDITION IS NOTED ON THIS RECORD OF SURVEY.

I WILL CONTINUE TO USE THE 90°14'00" CLOCKWISE ANGLE FROM MONUMENTS IN MAIN STREET FOR FUTURE SURVEYS IN RICHARD'S ADDITION. THIS WILL FOLLOW THE PRECEDENCE FOR RECORD SURVEYS IN RICHARD'S ADDITION. SURVEYS IN SCHMIDTGALL ADDITION WILL BE BASED ON PLAT MONUMENTS RECOVERED ON THIS RECORD OF SURVEY, WITH NORTH-SOUTH LOT DIMENSIONS PROPORTIONED AS SHOWN. WE NOTE THAT ELMO ROBNETT, IN HIS SURVEY NARRATIVE FOR SCHMIDTGALL ADDITION, CALLS THE CENTERLINE OF FOURTH STREET AS AT RIGHT ANGLES TO MAIN STREET.

WE NOTE THAT F.B. HAYES, ON SURVEY NO. Q-1068-AX FOUND OR ESTABLISHED "IRON PINS" FOR LOTS 7 THROUGH 12 OF SCHMIDTGALL ADDITION. SURVEY NO. Q-1068-AX DOES NOT SHOW TIES TO THE MONUMENTS IN MAIN STREET, NOR DOES IT SHOW RECOVERY OF THE PIPE MONUMENTS ON THE EXTERIOR OF SCHMIDTGALL ADDITION. WE SEARCHED FOR "IRON PIN" MONUMENTS ON THE BOUNDARY OF LOT 12, WITHOUT SUCCESS. WE ALSO MADE A LIMITED SEARCH ON THE SOUTH LINES OF LOTS 7 THROUGH 11. FOUND MONUMENTS ARE NOTED.

THIS SURVEY WAS MADE WITH A 2 PERSON CREW USING A SOKKIA SET 4B FIVE SECOND TOTAL STATION. MEASUREMENTS WERE MADE BY A COMBINATION OF CLOSED TRAVERSES AND RADIAL TIES. MONUMENTS WERE ESTABLISHED BY RADIAL METHODS AND VERIFIED BY CHECK OBSERVATIONS TO SEPARATE BACK SIGHTS.

WILLIAM R. WELLS, PLS 2602 N.E. RIVERSIDE PLACE P.O. BOX 1696 PENDLETON, OR 97801 PHONE: (541) 276-6362		PROJECT: J. KEETON BOUNDARY SURVEY FOR: JAMES KEETON LOT 12, SCHMIDTGALL ADDITION, IN THE SW 1/4 OF SECTION 19, T4N, R35E, W.M., UMATILLA COUNTY, OREGON.	
DATE: 8/05	DR. BY: JMW	CK. BY: WRW	NO: 05-1004

RECEIVED BY
Umatilla County Surveyor 05-157-B
Date 8-05
Rec'd by KK