

A SURVEY IN BLOCK 255
RESERVATION ADDITION TO
THE CITY OF PENDLETON, OREGON.

IM-7. Found a
3" brass cap in
a monument case.
Set by Don Staebler.
Also shows on
surveys R4 & R5.

NOTE:
The 1/2" smooth iron rod noted in surveys
R4, R5 and R6 bears N51°43'16"E, 0.22 foot
from the calculated intersection. I also
found the PK nails cited but did not tie
them.

BASIS OF BEARINGS

The bearings shown on this map are
based on the centerline of S.E. Isaac
(HIGH) Street being N66°24'E as per
the plat of Reservation Addition.

NARRATIVE OF SURVEY

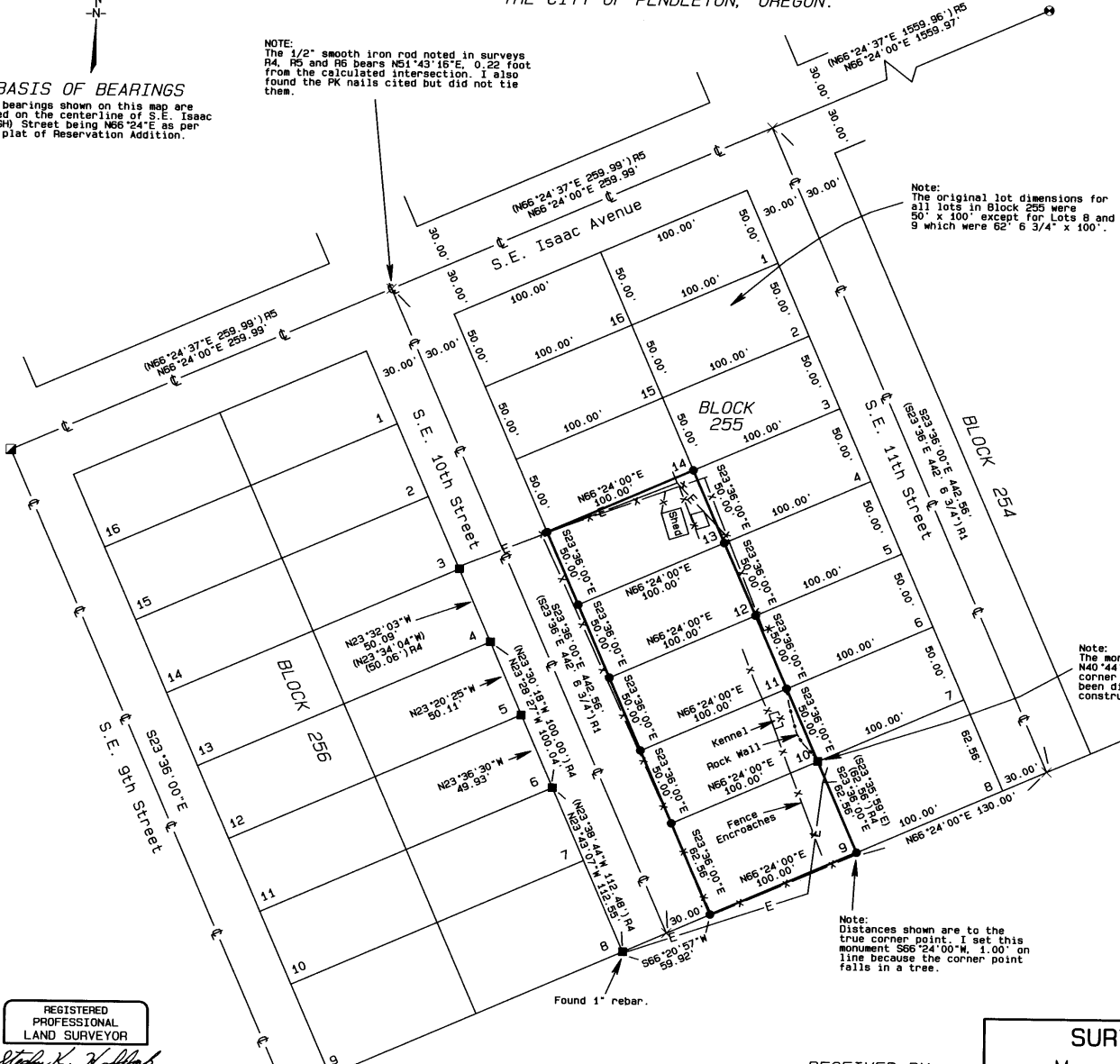
This survey was performed at the request of Mr. Jim Hatley. The purpose of the survey was to monument the corners of Lots 9 through 13 of Block 255, Reservation Addition to the City of Pendleton, as identified in the deed to Mr. Hatley recorded in microfilm Reel 469, Page 519 of the deed records of Umatilla County.

The practice of the modern surveys listed in the legend has been to calculate the block corners along S.E. Isaac and then to lay out the block at right angles to the centerline of S.E. Isaac. I established the corners along S.E. Isaac in the same manner as County Survey 02-51-B and then determined the street centerlines for S.E. 10th and 11th at right angles to S.E. Isaac.

County Survey 99-116-B was a survey of Lot 8 in Block 255. In that survey the 1/2" iron rod near the intersection of S.E. Isaac and S.E. 10th was held as the block corner. The result is that the corners of Block 255 are approximately 0.15' east of where the other surveys place them. Also in that survey, the S.W. corner of Lot 8 was not set. The northwest corner was monumented but that monument has plainly been disturbed by the construction of the rock retaining wall that encroaches on Lot 10. I did not set a new monument at the N.W. corner of Lot 8.

Some of the monuments in Block 255 along the west side of S.E. 10th St. were set under County Survey 89-77-A. I did not find the aluminum caps that were supposed to be on those monuments and each monument I found had a PVC pipe between 4' and 8' long set over the top of them. With the pry exerted on those monuments from the wind on the PVC the monuments should not be considered stable.

The fence lines and overhead power lines shown on this map are the only visible encroachments on this property. I did not attempt to locate any underground facilities.



Note:
The original lot dimensions for
all lots in Block 255 were
50' x 100' except for Lots 8 and
9 which were 62' 6 3/4' x 100'.

Note:
The monument from R4 lies
N40°24'37"E, 0.35' from the
corner point. It has plainly
been disturbed by the
construction of the rock wall.

Note:
Distances shown are to the
true corner point. I set this
monument S66°24'00"W, 4.00' on
line because the corner point
falls in a tree.

LEGEND

- SET A 5/8" x 24" IRON REBAR
W/ A 1 1/8" ORANGE PLASTIC
CAP STAMPED WTS AND
56295LS
- ⊕ FOUND A BRASS CAP AS NOTED
- ⊠ FOUND A PK NAIL SET
BY THE CITY OF PENDLETON
- FOUND THE MONUMENT FROM
SURVEY R4.
- ⊗ COMPUTED POINT
- R1 PLAT OF RESERVATION ADDITION
PLAT BOOK 1, PAGES 86 AND 88
- R2 COUNTY SURVEY 84-26-A
- R3 COUNTY SURVEY 89-77-A
- R4 COUNTY SURVEY 99-116-B
- R5 COUNTY SURVEY 02-51-B
- R6 COUNTY SURVEY 03-95-B

REGISTERED
PROFESSIONAL
LAND SURVEYOR
Stephen K. Haddock
OREGON
JULY 9, 2001
STEPHEN K. HADDOCK
56295LS
RENEWS 6-30-07

RECEIVED BY
Umatilla County Surveyor
Date: 3/15/06
Rec'd By: *S. Haddock*
No.: 06-040-B

SURVEY FOR
Mr. Jim Hatley
P.O. Box 458
Pilot Rock, OR 97868
LOCATION: SW 1/4, NE 1/4, S11, T2N, R32E,
W.M., Umatilla County, Oregon.

PROJECT DATE: January 25, 2006
Project No. 06-03 SCALE: 1" = 50'
WITNESS TREE SURVEYING
Stephen K. Haddock, PLS
P.O. Box 6
Pilot Rock, Oregon 97868
(541) 443-2922