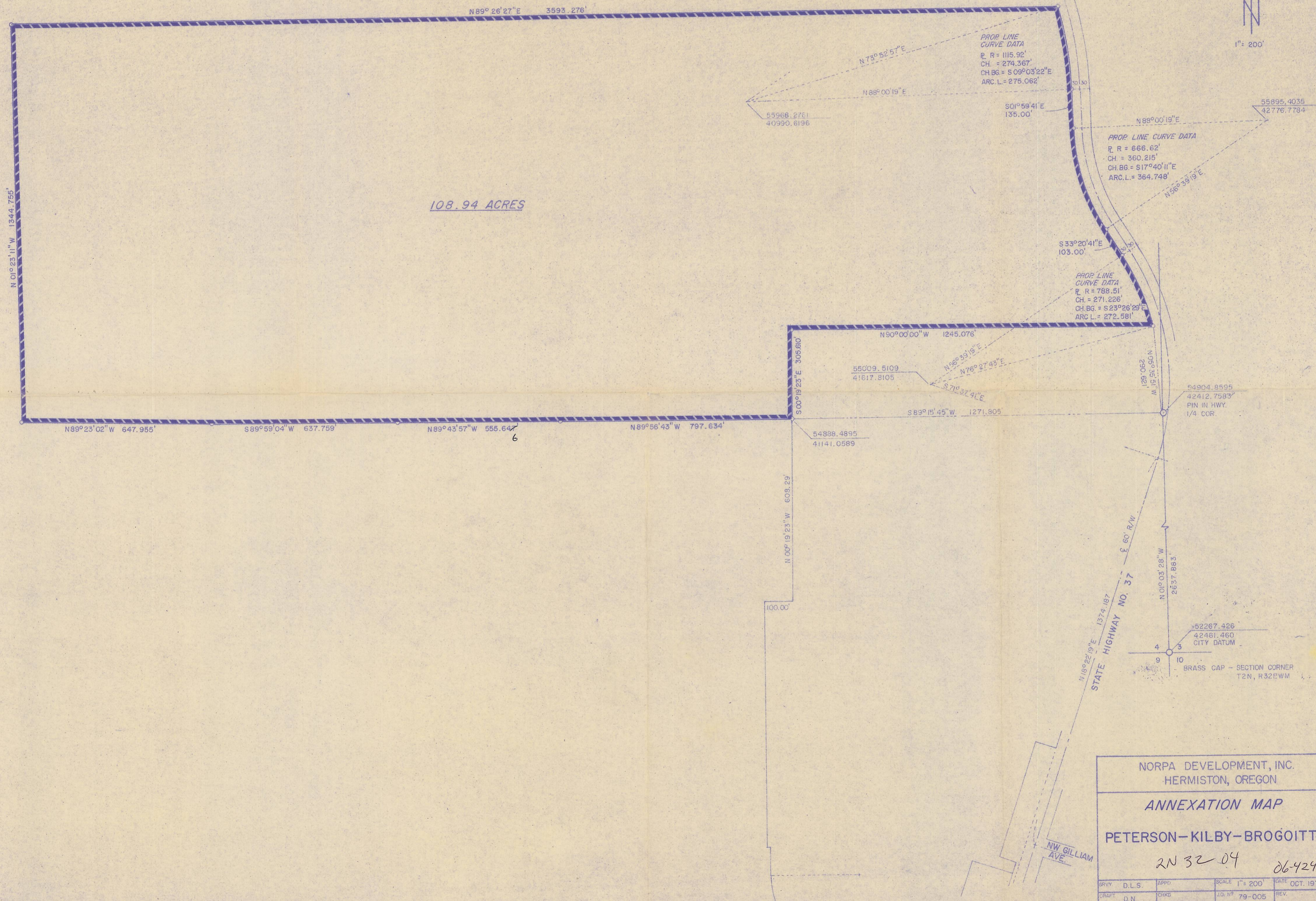




1" = 200'



108.94 ACRES

PROP. LINE CURVE DATA
R = 1115.92'
CH. = 274.367'
CH. BG = S 09° 03' 22" E
ARC. L. = 275.062'

PROP. LINE CURVE DATA
R = 666.62'
CH. = 360.215'
CH. BG = S 17° 40' 11" E
ARC. L. = 364.748'

PROP. LINE CURVE DATA
R = 788.51'
CH. = 271.226'
CH. BG = S 23° 26' 29" E
ARC. L. = 272.581'

54904.8595
42412.7583'
PIN IN HWY.
1/4 COR.

52267.426
42481.460
CITY DATUM

BRASS CAP - SECTION CORNER
T2N, R32EWM

NORPA DEVELOPMENT, INC.
HERMISTON, OREGON
ANNEXATION MAP
PETERSON-KILBY-BROGOITTI
2N 32 04 06424B

SRVY	D.L.S.	APPD	SCALE 1" = 200'	DATE OCT. 1979
DRAFT	D.N.	CHKD	JO. NO. 79-005	REV.