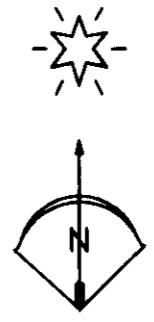


LEGEND

- FOUND A RAILROAD SPIKE WITH A BRASS PLUG IN A MONUMENT CASE FROM SURVEY Q-925-C
- FOUND A 5/8" REBAR WITH A YELLOW PLASTIC CAP FROM SURVEY 03-36-B
- SET A 5/8" x 24" IRON REBAR W/ A 1 1/8" ORANGE PLASTIC CAP STAMPED WTS AND 56295LS
- COMPUTED POINT
- R1 PLAT OF ORANGE & CONBOYS PLAT BOOK 5, PAGE 15
- R2 COUNTY SURVEY Q-925-C
- R3 COUNTY SURVEY 02-192-B
- R4 COUNTY SURVEY 03-36-B



**A SURVEY OF LOT 5, BLOCK 13
ORANGE & CONBOY'S ADDITION
TO THE CITY OF PILOT ROCK**

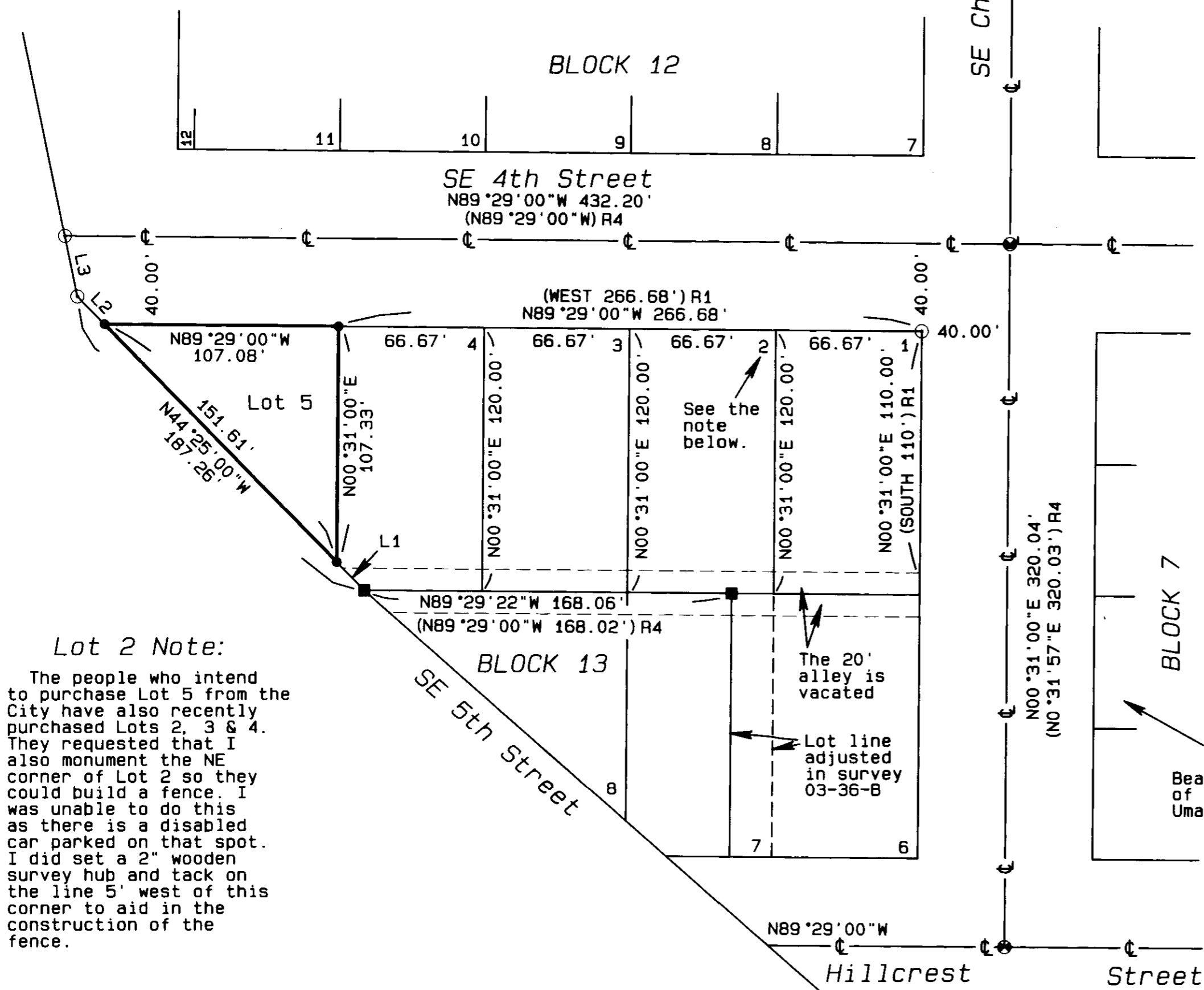
NARRATIVE OF SURVEY

This survey was performed at the request of Mr. Steve Draper on behalf of the City of Pilot Rock. The purpose of the survey was to monument the boundaries of Lot 5, Block 13, as shown hereon.

To establish the boundaries of Lot 5 I first determined the location of NE 4th Street from the monuments on SE Cherry Street. Those monuments were set under survey Q-9259C which was performed for the purpose of establishing the street locations in Pilot Rock. I then calculated the location of the NE corner of Lot 5 using the record plat dimensions from the Orange & Conboy's Addition plat.

The information on the original plat indicates that it was the intent to lay out the subdivision using record distances and laying out the lots running from east to west. This can be seen on the plat as no dimensions are given on the plat for lots lying along the west boundary of the plat. This would mean that all lots along the west boundary are "closing lots" whose western boundary is determined by the plat exterior boundary. This method has an inherent difficulty in that the plat exterior does not close by 15.6 feet.

There has been one prior survey in Block 13. In that survey, it appears that the exterior boundary of the addition was established by running the record bearing and distances from the initial point of the addition. I calculated a location for the exterior line by doing a least squares adjustment of the record plat data controlled by the monuments at the NE and SE corners of the addition. This calculated location differs from the location monumented in survey 03-36-B from 2 to 3 feet. Since I have not found any original monuments along the west boundary to the addition, I held the monument from survey 03-36-B as controlling the west line of the subdivision for this block. I calculated the NW and South corners of Lot 5 by running lines from the NE corner of Lot 5 parallel with the centerlines of SE 4th and SE Cherry to their intersect with the west line of the addition.



Lot 2 Note:

The people who intend to purchase Lot 5 from the City have also recently purchased Lots 2, 3 & 4. They requested that I also monument the NE corner of Lot 2 so they could build a fence. I was unable to do this as there is a disabled car parked on that spot. I did set a 2" wooden survey hub and tack on the line 5' west of this corner to aid in the construction of the fence.

BASIS OF BEARINGS
Bearings are based on the centerline of SE Cherry Street as shown on Umatilla County Survey 03-36-B

RECEIVED BY

Umatilla County Surveyor
Date: 7/23/08
Rec'd By: *[Signature]*
No.: 08-113-B

REGISTERED PROFESSIONAL LAND SURVEYOR

Stephen K. Haddock

OREGON
JULY 9, 2001
STEPHEN K. HADDOCK
56295LS
RENEWS 6-30-09

LINE TABLE

LINE No.	BEARING	DISTANCE
L1	N44°25'00"W	17.98'
L2	N44°25'00"W	17.67'
L3	N11°42'00"W	28.13'

SURVEY FOR
CITY OF PILOT ROCK
P.O. BOX 130
PILOT ROCK, OR 97868

LOCATION: NW 1/4, S16, T1S, R32E, W.M.
Umatilla County, Oregon

PROJECT DATE: July 10, 2008

Project No. 08-20 SCALE: 1" = 50'

WITNESS TREE SURVEYING

Stephen K. Haddock, PLS
P.O. Box G
Pilot Rock, Oregon 97868
(541) 443-2922