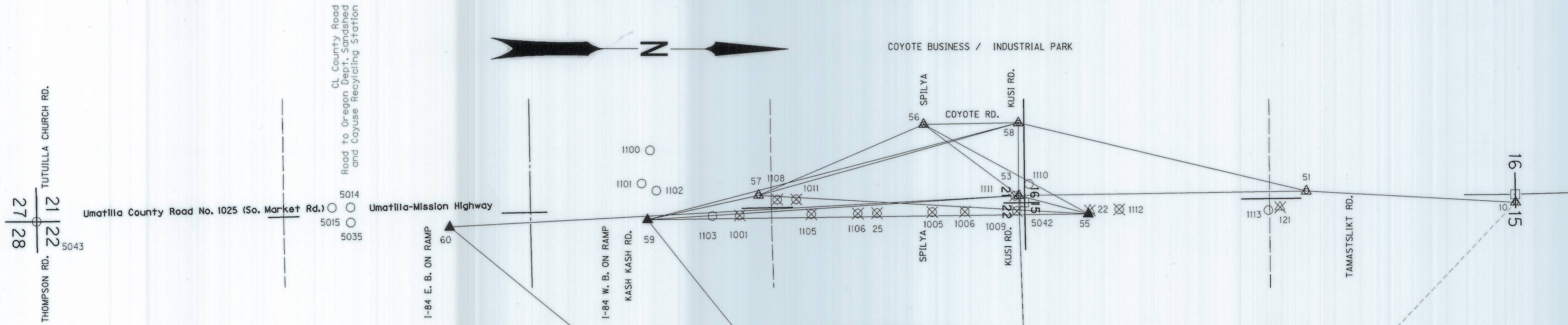


SEC. 15, 16, 21, & 22, T. 2 N., R. 33 E., W. M.



BASIS OF BEARING AND CONTROL NETWORK SCHEMATIC
NOT TO SCALE

NETWORK DISTANCE AND BEARING TABLE

| AT | TO | DISTANCE (FT) | BEARING |
|----|----|---------------|---------------|
| 50 | 51 | 1,129.31' | S03°04'14.2"W |
| 51 | 58 | 1,600.56' | S13°10'12.7"W |
| 51 | 53 | 1,555.32' | N00°55'53.4"W |
| 53 | 54 | 2,696.61' | N87°58'39.4"E |
| 53 | 55 | 387.01' | N14°27'43.7"E |
| 53 | 56 | 639.68' | S36°37'57.5"W |
| 53 | 58 | 389.98' | S89°30'31.3"W |
| 53 | 59 | 2,004.89' | N03°39'07"W |
| 53 | 60 | 3,071.82' | N03°07'58.7"W |
| 54 | 53 | 2,696.61' | S87°58'39.4"W |
| 54 | 59 | 3,314.18' | N50°46'13.7"E |
| 54 | 60 | 4,048.05' | S38°37'41.1"W |
| 55 | 53 | 387.01' | N14°27'43.7"E |
| 55 | 56 | 1,008.70' | S28°18'28.7"W |
| 55 | 57 | 1,780.92' | S03°10'33.6"W |
| 55 | 59 | 2,375.77' | S00°44'55.9"E |
| 56 | 53 | 639.68' | S36°37'57.5"W |
| 56 | 55 | 1,008.74' | S28°18'39.8"W |
| 56 | 57 | 967.70' | N23°06'00.7"W |
| 56 | 58 | 510.05' | S00°55'37.1"E |
| 57 | 56 | 967.70' | N23°06'00.7"W |
| 57 | 58 | 1,452.85' | S15°29'14"E |
| 57 | 59 | 611.30' | S12°15'05.6"E |
| 58 | 51 | 1,600.56' | S13°10'12.7"W |
| 58 | 53 | 389.98' | S89°30'31.3"W |
| 58 | 56 | 510.05' | S00°55'47.3"E |
| 58 | 57 | 1,452.85' | S15°29'14"E |
| 58 | 59 | 2,063.47' | N14°31'44.9"W |
| 59 | 53 | 2,004.89' | N03°39'07"W |
| 59 | 54 | 3,314.18' | N50°46'13.7"E |
| 59 | 55 | 2,375.77' | S00°44'55.9"E |
| 59 | 57 | 611.30' | S12°15'05.6"E |
| 59 | 58 | 2,063.47' | N14°31'44.9"W |
| 60 | 53 | 3,071.82' | N03°07'58.7"W |
| 60 | 54 | 4,048.05' | S38°37'41.1"W |

REGISTERED PROFESSIONAL LAND SURVEYOR
C.B. Stockhoff
OREGON
July 10, 1996
Curtis B. Stockhoff
2765
EXPIRES: 6/30/10

SURVEY NARRATIVE

THE PURPOSE OF THIS SURVEY IS TO ESTABLISH HORIZONTAL CONTROL, DEFINE THE RIGHT-OF-WAY (ROW) CENTERLINE ALIGNMENT AND THE ROW BOUNDARY ACQUIRED FOR THE CONSTRUCTION OF OREGON HIGHWAY 331: ACCESS IMPROVEMENTS M.P. 3.74 TO M.P. 3.35.

ROW ACQUIRED NECESSARY FOR THIS PROJECT WAS DETERMINED FROM UMATILLA COUNTY SURVEYS AND PLATS. REFERENCE DOCUMENTS ARE COUNTY SURVEYS (CS): CS 88-16-C, CS 93-53-C, CS 99-120-C, CS 99-186-A, CS 97-222-C, CS 08-40-B, AND STATE OF OREGON HIGHWAY ROW MAPS: 8B-36-23, 8B-14-20, 10B-18-35.

THE BASIS OF BEARING FOR THIS SURVEY WAS ESTABLISHED FROM MONUMENTS TIED ON COUNTY SURVEY CS 93-53-C. THE OREGON STATE PLANE COORDINATES, NORTH ZONE WERE CONVERTED TO A LOCAL DATUM PLANE COORDINATES (LDP) BY USING THE COMBINED SCALE FACTOR OF 0.99986142, TO CONVERT BACK TO OREGON STATE PLANE COORDINATES, MULTIPLY THE LDP COORDINATES BY 1/0.99986142. THE BEARINGS SHOWN ARE GRID BEARINGS. THE ROTATION ANGLE TO RETURN TO TRUE BEARINGS IS 01°17'18" CLOCKWISE.

THE ROW BOUNDARY IS DEFINED BY STATION AND OFFSETS FROM THE ROW CENTERLINE AS SHOWN ON THE MAP. THE CHANGES IN ROW AND CENTERLINE POSITIONS ARE CALCULATED. THE NETWORK WAS REDONE AFTER CONSTRUCTION AND BASED ON THE SAME COORDINATE SYSTEM USED TO DETERMINE THE ROW CENTERLINE ALIGNMENT.

| LEGEND | |
|--------|--------------------------------------|
| () | RECORD DATA AS NOTED IN TABLES |
| △ | FOUND MONUMENT USED AS NETWORK POINT |
| □ | CALCULATED POINT |
| ⊗ | DESTROYED NETWORK POINT, SEE SHEET 5 |
| ○ | FOUND MONUMENT USED AS NETWORK POINT |
| ▲ | SET NETWORK POINT |
| ⊗ | DESTROYED MONUMENT, SEE SHEET 5 |

NETWORK MONUMENTATION LIST

| PT. NO. | LDP NORTHING | LDP EASTING | STATION | OFFSET | DESCRIPTION & REFERENCE DOCUMENTS |
|---------|--------------|---------------|------------|--------------|---|
| 50 | 729,478.714 | 8,667,673.914 | 199+15 | 38.85 Lt. | FOUND 2 1/2" DIA. BRASS CAP MARKED "W.C. T2N R33E SEC S16/S15 1993 PLS1106" (Ref. C.S. 93-53-C). |
| 51 | 728,351.029 | 8,667,613.421 | 210+41.56 | 40.00 Rt. | FOUND 5/8" IRON ROD ON THE WEST SIDE OF OR331 (C.S. 97-222-C). |
| 53 | 726,795.910 | 8,667,638.706 | 225+96.88 | 39.94 Rt. | FOUND PK NAIL SET IN KUSI RD. ON THE WEST SIDE OF OR331 (C.S. 08-40-B). |
| 54 | 726,891.073 | 8,670,333.635 | 225+45.52 | 2,656.18 Lt. | FOUND 2 1/2" DIA. BRASS CAP SOUTH 1/4 COR. SEC. 15 MARKED "S15/S22, T2N R33E 1993 PLS1106 (Ref. C.S. 93-53-C) |
| 55 | 727,170.653 | 8,667,735.357 | 222+23.76 | 62.85 Lt. | SET 1 1/2" DIA. ALUMINIUM CAP MARKED "OREGON STATE HWY. DEPT." ON THE EAST SIDE OF OR331 (C.S. 08-40-B). |
| 56 | 726,282.579 | 8,667,257.019 | 231+03.95 | 429.92 Rt. | FOUND 2" DIA. ALUMINIUM CAP WITH NO IDENTIFIABLE MARKINGS AT THE INTERSECTION OF SPILYA RD. AND COYOTE RD (C.S. 08-40-B). |
| 57 | 725,392.466 | 8,667,636.688 | M 1+99.70 | 65.00 Rt. | FOUND 1 1/2" DIA. ALUMINIUM CAP WITH NO IDENTIFIABLE MARKINGS ON THE WEST SIDE OF OR331. |
| 58 | 726,792.566 | 8,667,248.742 | 225+93.89 | 429.88 Rt. | FOUND 2 1/2" DIA. ALUMINIUM CAP WITH NO IDENTIFIABLE MARKINGS AT THE INTERSECTION OF KUSI RD. AND COYOTE RD. |
| 59 | 724,795.090 | 8,667,766.408 | M 7+99.39 | 53.53 Lt. | Set 12" NAIL IN THE NORTHEAST QUADRANT OF OR331 AND KASH KASH RD. |
| 60 | 723,728.679 | 8,667,806.591 | M 18+66.36 | 73.79 Lt. | SET HUB AND TACK ON THE NORTH SIDE OF THE I-84 EASTBOUND ON RAMP. |

OREGON DEPARTMENT OF TRANSPORTATION



HORIZONTAL CONTROL AND RIGHT-OF-WAY BOUNDARY MONUMENTATION
OR331: ACCESS IMPROVEMENTS

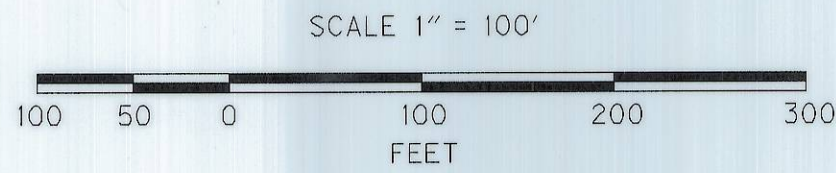
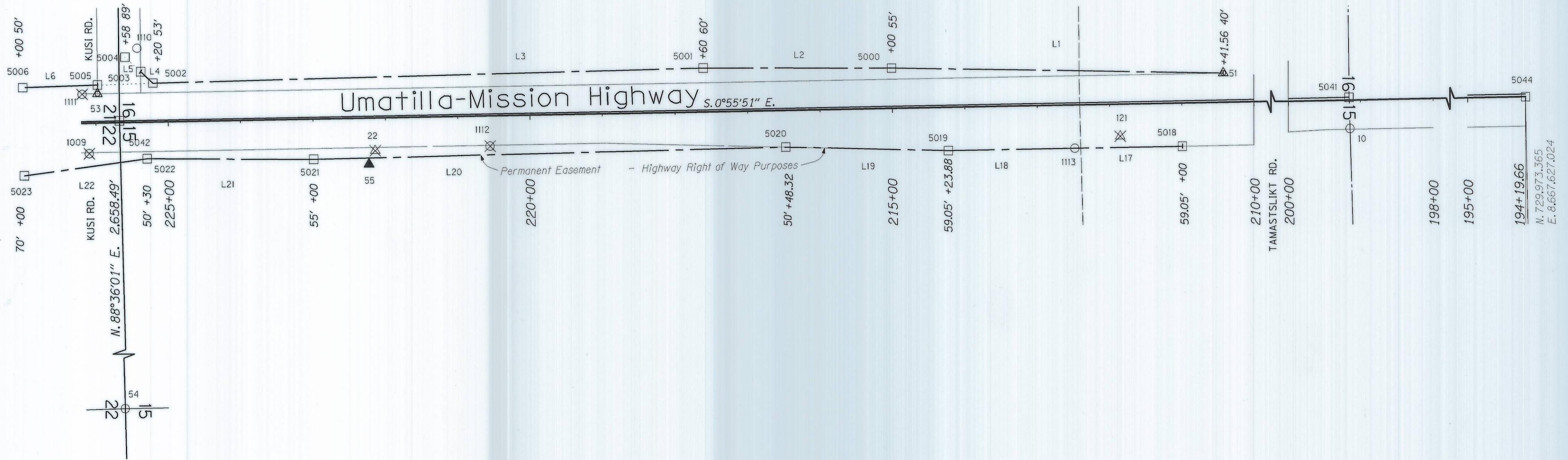
UMATILLA - MISSION HIGHWAY
UMATILLA COUNTY

ODOT REGION 5
3012 ISLAND AVE.
LA GRANDE, OR. 97850-9497
KEY NO. 13608

APRIL 20, 2010
SHEET 1 OF 5

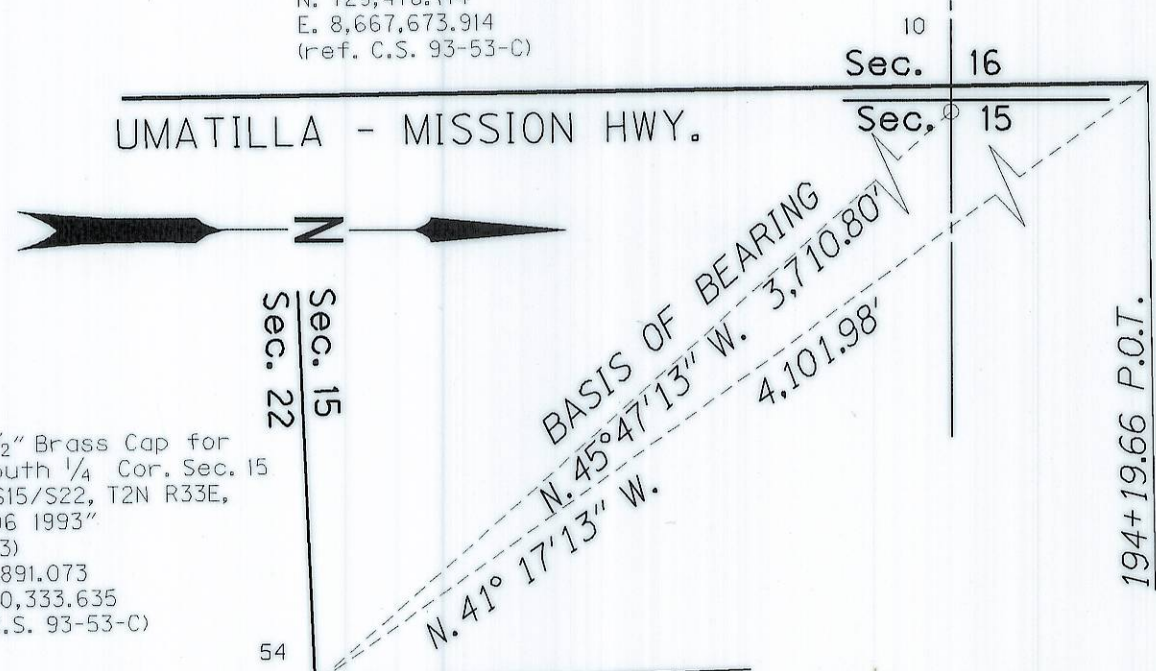
SEC. 15, 16, 21, & 22, T. 2 N., R. 33 E., W. M.

△ COYOTE RD.
58



INSERT BASIS OF BEARING NO SCALE

50
Fd. Witness Corner for 1/4 Section Corner
2 1/2" Brass Cap
stamped "T2N R33E 1/4 W.C. 42SE
S16/S15 1993 PLS1106"
(1-23-03)
N. 729,478.714
E. 8,667,673.914
(ref. C.S. 93-53-C)



54
Fd. 2 1/2" Brass Cap for
the South 1/4 Cor. Sec. 15
mkd. "S15/S22, T2N R33E,
PLS 1106 1993"
(1-23-03)
N. 726,891.073
E. 8,670,333.635
(ref. C.S. 93-53-C)

| LEGEND | |
|--------|---|
| () | RECORD DATA AS NOTED IN TABLES |
| △ | FOUND MONUMENT USED AS NETWORK POINT |
| □ | CALCULATED POINT |
| ⊗ | DESTROYED NETWORK POINT, SEE SHEET 5 |
| ○ | FOUND MONUMENT USED AS NETWORK POINT |
| ▲ | SET NETWORK POINT |
| ⊗ | DESTROYED MONUMENT, SEE SHEET 5 |

REGISTERED
PROFESSIONAL
LAND SURVEYOR

C. B. Stockhoff

OREGON
July 10, 1996
Curtis B. Stockhoff
2765
EXPIRES: 6/30/10

OREGON DEPARTMENT OF TRANSPORTATION

ENGLISH

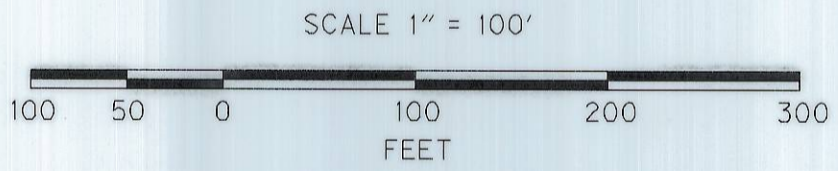
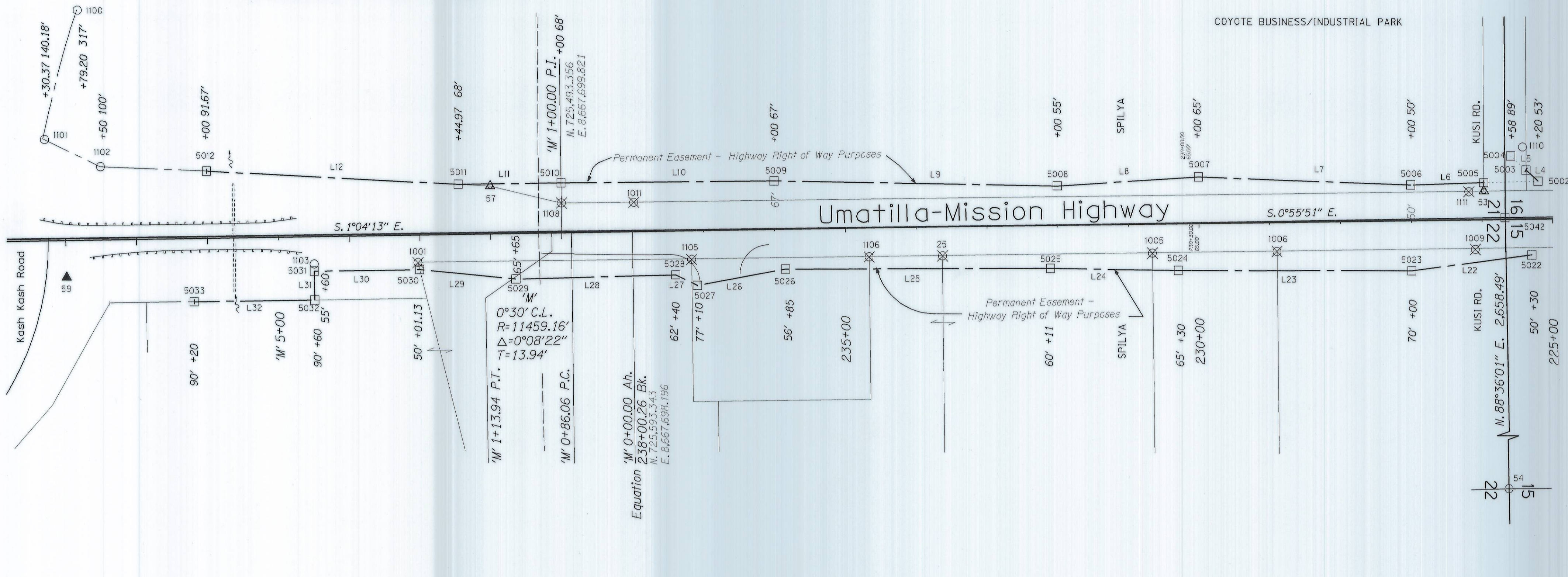
HORIZONTAL CONTROL AND
RIGHT-OF-WAY BOUNDARY MONUMENTATION
OR331: ACCESS IMPROVEMENTS

UMATILLA - MISSION HIGHWAY
UMATILLA COUNTY

ODOT REGION 5
3012 ISLAND AVE.
LA GRANDE, OR. 97850-9497 KEY NO. 13608


APRIL 20, 2010
SHEET 2 OF 5

RECEIVED BY
Umatilla County Surveyor
Date 2-10
Rec'd By KK
No. 10-115-B

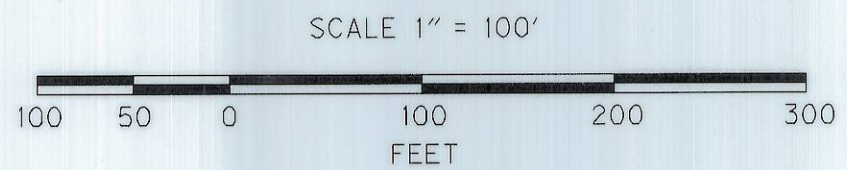
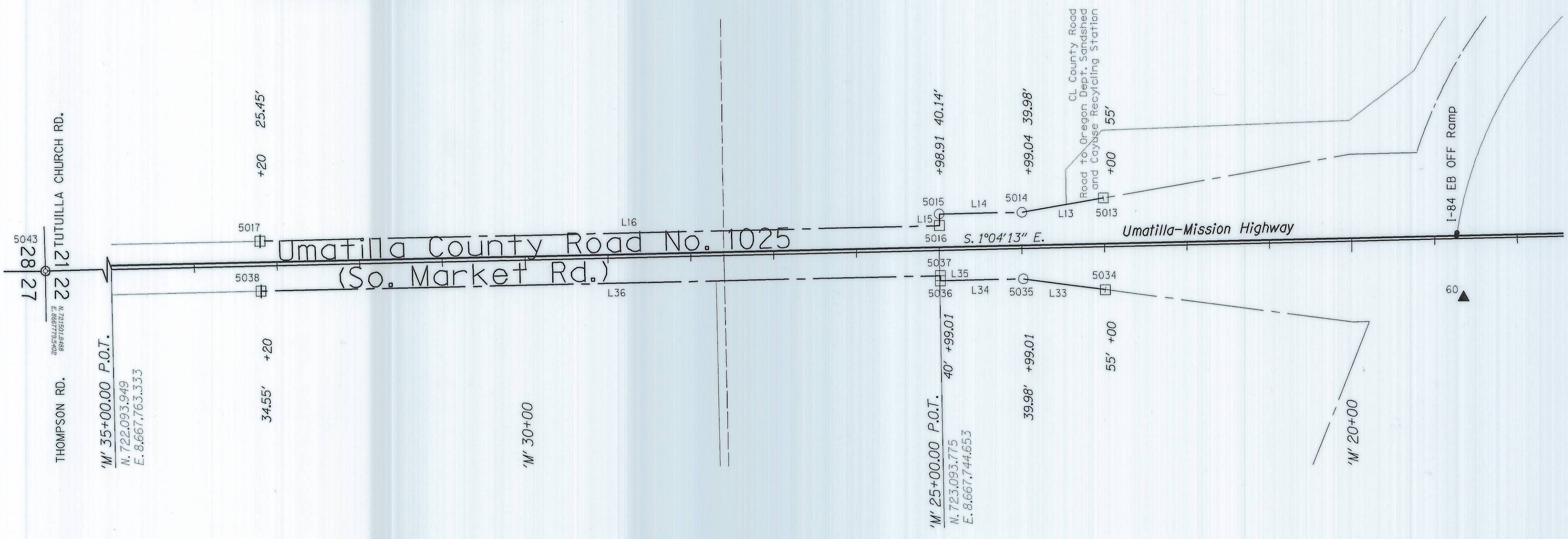


| LEGEND | |
|--------|--------------------------------------|
| () | RECORD DATA AS NOTED IN TABLES |
| △ | FOUND MONUMENT USED AS NETWORK POINT |
| □ | CALCULATED POINT |
| ⊗ | DESTROYED NETWORK POINT, SEE SHEET 5 |
| ○ | FOUND MONUMENT USED AS NETWORK POINT |
| ▲ | SET NETWORK POINT |
| ⊗ | DESTROYED MONUMENT, SEE SHEET 5 |

REGISTERED PROFESSIONAL LAND SURVEYOR
Curtis B. Stockhoff
 OREGON
 July 10, 1996
 Curtis B. Stockhoff
 2765
 EXPIRES: 6/30/10

OREGON DEPARTMENT OF TRANSPORTATION
 HORIZONTAL CONTROL AND RIGHT-OF-WAY BOUNDARY MONUMENTATION
 OR331: ACCESS IMPROVEMENTS
 UMATILLA - MISSION HIGHWAY
 UMATILLA COUNTY
 ODOT REGION 5
 3012 ISLAND AVE.
 LA GRANDE, OR. 97850-9497 KEY NO. 13608
 APRIL 20, 2010
 SHEET 3 OF 5

Received by
 Umatilla County Surveyors
 Date 7-10
 Rec'd By *JK*
 No. 10-115-B



| LEGEND | |
|--------|--------------------------------------|
| () | RECORD DATA AS NOTED IN TABLES |
| △ | FOUND MONUMENT USED AS NETWORK POINT |
| □ | CALCULATED POINT |
| ⊗ | DESTROYED NETWORK POINT, SEE SHEET 5 |
| ○ | FOUND MONUMENT USED AS NETWORK POINT |
| ▲ | SET NETWORK POINT |
| ⊗ | DESTROYED MONUMENT, SEE SHEET 5 |

REGISTERED PROFESSIONAL LAND SURVEYOR

Curtis B. Stockhoff

OREGON
July 10, 1996
Curtis B. Stockhoff
2765

EXPIRES: 6/30/10

OREGON DEPARTMENT OF TRANSPORTATION
ENGLISH
HORIZONTAL CONTROL AND RIGHT-OF-WAY BOUNDARY MONUMENTATION
OR331: ACCESS IMPROVEMENTS

UMATILLA - MISSION HIGHWAY
UMATILLA COUNTY
ODOT REGION 5
3012 ISLAND AVE.
LA GRANDE, OR. 97850-9497 KEY NO. 13608
APRIL 20, 2010
SHEET 4 OF 5

RECEIVED BY
Umatilla County Surveyor
Date 7-10
Rec'd By JK
No. 10-115-B

SEC. 15, 16, 21, & 22, T. 2 N., R. 33 E., W. M.

FOUND AND SET MONUMENT LIST

Table with columns: PT. NO., LDP NORTHING, LDP EASTING, STATION, OFFSET, DESCRIPTION & REFERENCE DOCUMENTS. Contains data for points 22, 25, 1001-1113, 5014-5043.

LINE TABLE with columns: LINE, DISTANCE (FT), BEARING. Lists points L1 through L36 with their respective distances and bearings.

ALIGNMENT CONTROL POINT LIST

Table with columns: PT. NO., LDP NORTHING, LDP EASTING, STATION, OFFSET, DESCRIPTION & REFERENCE DOCUMENTS. Contains data for points 5044-5051.

ACCESS CONTROL POINT LIST

Table with columns: PT. NO., LDP NORTHING, LDP EASTING, STATION, OFFSET, DESCRIPTION & REFERENCE DOCUMENTS. Contains data for points 51, 5000-5038.

LEGEND table defining symbols used in the survey: () RECORD DATA AS NOTED IN TABLES, triangle FOUND MONUMENT USED AS NETWORK POINT, square CALCULATED POINT, crossed square DESTROYED NETWORK POINT, circle FOUND MONUMENT USED AS NETWORK POINT, triangle SET NETWORK POINT, crossed square DESTROYED MONUMENT, SEE SHEET 5.

REGISTERED PROFESSIONAL LAND SURVEYOR
Curtis B. Stockhoff
OREGON July 10, 1996
Curtis B. Stockhoff 2765

EXPIRES: 6/30/10

RECEIVED BY
Umatilla County Surveyor

Date 7-10

Rec'd By KR

No. 10-115-B

OREGON DEPARTMENT OF TRANSPORTATION
HORIZONTAL CONTROL AND RIGHT-OF-WAY BOUNDARY MONUMENTATION
OR331: ACCESS IMPROVEMENTS
UMATILLA - MISSION HIGHWAY
UMATILLA COUNTY
ODOT REGION 5
3012 ISLAND AVE.
LA GRANDE, OR. 97850-9497 KEY NO. 13608
APRIL 20, 2010
SHEET 5 OF 5