

Survey No. _____
 Filed _____
 By _____

NARRATIVE:

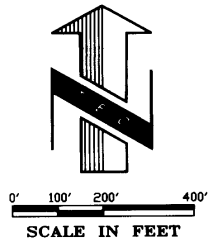
THE PURPOSE OF THIS SURVEY WAS TO REPLACE EXISTING SURVEY MONUMENTS DESTROYED IN THE COURSE OF CONSTRUCTION OF THE ODOT COURT-DORION PROJECT COMPLETED IN DOWNTOWN PENDLETON. THE COORDINATE AND BEARING SYSTEM UTILIZED FOR THIS SURVEY IS THE 1973 CITY OF PENDLETON HORIZONTAL CONTROL NETWORK. ODOT PROVIDED A CONTROL NETWORK BASED UPON THE PENDLETON HORIZONTAL DATUM FOR STAKING OF IMPROVEMENTS FOR THIS PROJECT. CONTROL POINTS WITHIN THIS NETWORK UTILIZED FOR THE REMONUMENTATION SHOWN HEREON ARE LISTED IN TABLE FORM ON THIS SURVEY.

FIELD SURVEY WORK FOR THIS SURVEY WAS COMPLETED UTILIZING A TRIMBLE R8 RTK GPS RECEIVER OPERATED WITH A TSC 2 HANDHELD DATA COLLECTOR. THIS UNIT WAS OPERATED WITH A CELL PHONE LINK TO THE ORGN NET CONTINUOUSLY OPERATING BASE STATION. A SITE CALIBRATION UTILIZING A LEAST SQUARES ADJUSTMENT WAS MADE BETWEEN THE CONTROL POINTS LISTED. FIELD TIES WERE THEN MADE TO THE POINTS TO BE REMONUMENTED PRIOR TO THEIR DESTRUCTION. FOLLOWING COMPLETION OF THE CONSTRUCTION WORK, THESE POINTS WERE RESET UTILIZING THE MONUMENT TYPE NOTED ON THE SURVEY AT THE COORDINATE POSITION PREVIOUSLY ESTABLISHED.

NO INVESTIGATION WAS MADE IN THIS SURVEY WITH REGARDS TO THE INTEGRITY OF THE POSITION OF THE MONUMENTS REPLACED. THE MONUMENTS WERE SIMPLY REPLACED AT THEIR AS FOUND LOCATION.

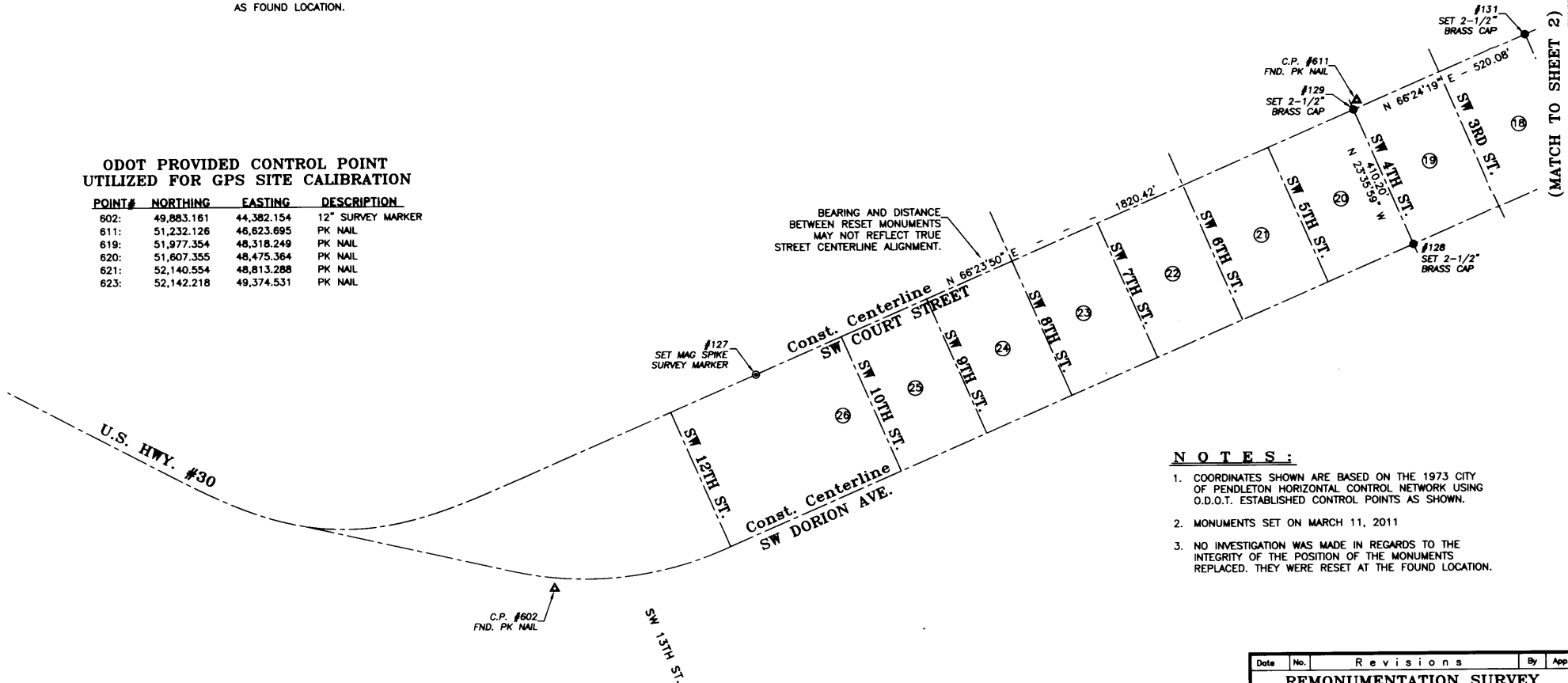
REMONUMENTED POINTS:

POINT#	NORTHING	EASTING	MON. FOUND	MONUMENT SET
127:	50,476.830	44,945.979	PK NAIL	MAG SPIKE SURVEY MARKER
128:	50,829.821	46,778.325	2-1/2" BRASS CAP	2-1/2" BRASS CAP
129:	51,205.715	46,614.104	2-1/2" BRASS CAP	2-1/2" BRASS CAP
130:	51,250.332	47,740.542	PK NAIL	MAG SPIKE SURVEY MARKER
131:	51,413.882	47,090.701	2-1/2" BRASS CAP	2-1/2" BRASS CAP
132:	51,626.183	47,576.422	PK NAIL	MAG SPIKE SURVEY MARKER



**ODOT PROVIDED CONTROL POINT
UTILIZED FOR GPS SITE CALIBRATION**

POINT#	NORTHING	EASTING	DESCRIPTION
602:	49,883.161	44,382.154	12" SURVEY MARKER
611:	51,232.126	46,623.695	PK NAIL
619:	51,977.354	48,318.249	PK NAIL
620:	51,607.355	48,475.364	PK NAIL
621:	52,140.554	48,813.288	PK NAIL
623:	52,142.218	49,374.531	PK NAIL

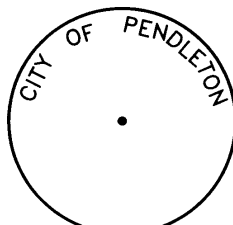


NOTES:

- COORDINATES SHOWN ARE BASED ON THE 1973 CITY OF PENDLETON HORIZONTAL CONTROL NETWORK USING O.D.O.T. ESTABLISHED CONTROL POINTS AS SHOWN.
- MONUMENTS SET ON MARCH 11, 2011
- NO INVESTIGATION WAS MADE IN REGARDS TO THE INTEGRITY OF THE POSITION OF THE MONUMENTS REPLACED. THEY WERE RESET AT THE FOUND LOCATION.

LEGEND:

- SET MAG SURVEY MARKER, 1" DIA. HEAD X 3" LONG
- SET 2-1/2" DIA. BRASS CAP WITH 4" STEM, FLUSH IN PAVEMENT
- ▲ FOUND O.D.O.T. CONTROL POINT AS NOTED



SET 2-1/2" DIA. BRASS CAP



SET MAG SURVEY MARKER

REGISTERED
PROFESSIONAL
LAND SURVEYOR

OREGON
JULY 13, 1999
BENJAMIN B. BESEDA
50800

EXPIRES: 12/31/2011

4-8
B.B.B.
S.D.H.

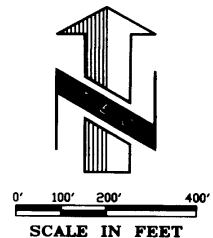
Date	No.	Revisions	By	App.
REMONUMENTATION SURVEY FOR PIONEER CONSTRUCTION IN THE NORTH 1/2 OF SECTION 10 AND IN THE NW1/4 OF SECTION 11, TWP.2N., R.32E., W.M. CITY OF PENDLETON UMATILLA COUNTY, OREGON				
TENNESON ENGINEERING CORP. CONSULTING ENGINEERS 3313 W. 2ND STREET, Suite 100 THE DALLES, OREGON 97058 PH. 541-296-9177 FAX 541-296-6657				
Survey	Calculation	Design	Date	Scale
B.R.H.	B.B.B.		4/6/2011	1"=200'
Drawn	DWG. No.	Work Order No.	Sheet	
S.D.H.	K:\ACAD\13200\13246.svy.dwg	13246	1 of 2	

UMATILLA COUNTY ENGINEERS

Survey No. _____
 Filed _____
 By _____

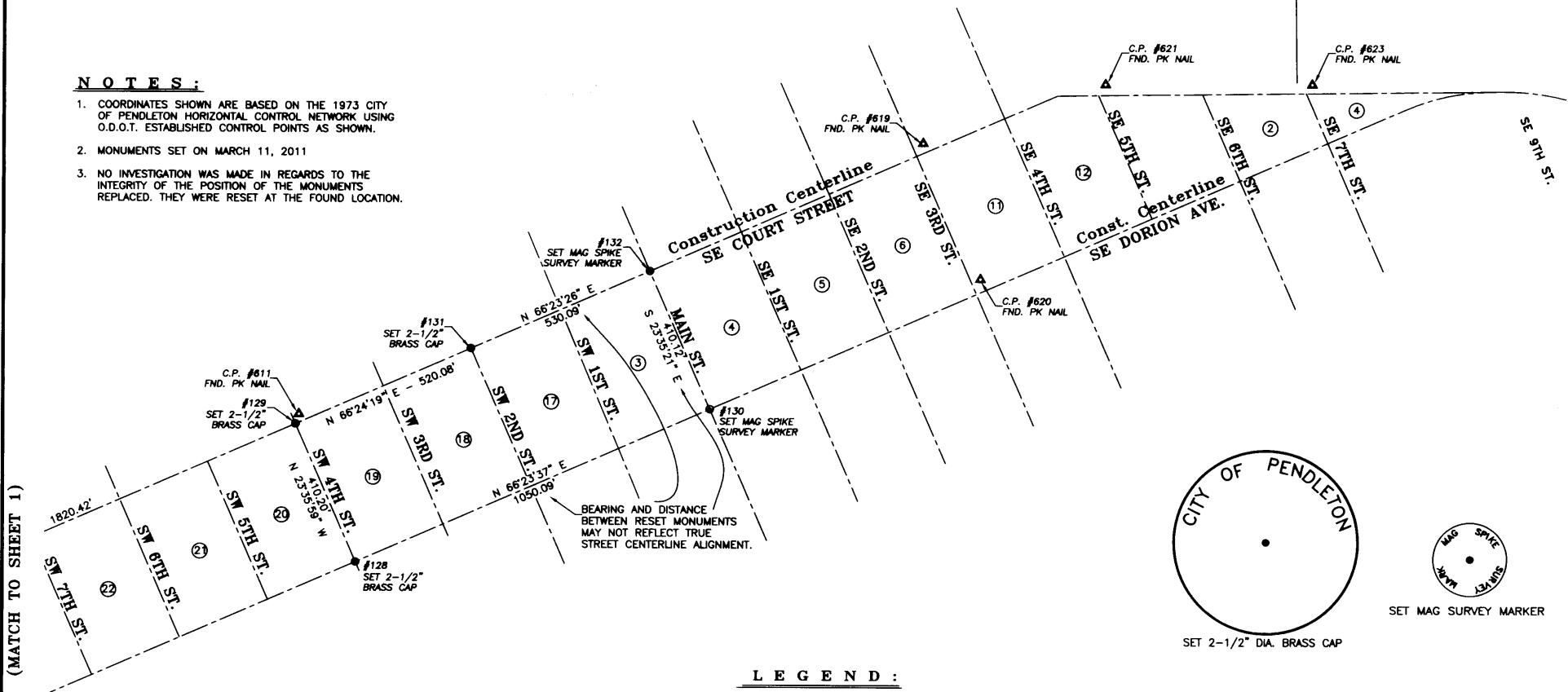
ODOT PROVIDED CONTROL POINT UTILIZED FOR GPS SITE CALIBRATION

POINT#	NORTHING	EASTING	DESCRIPTION
602:	49,883.161	44,382.154	12" SURVEY MARKER
611:	51,232.126	46,623.695	PK NAIL
619:	51,977.354	48,318.249	PK NAIL
620:	51,607.355	48,475.364	PK NAIL
621:	52,140.554	48,813.288	PK NAIL
623:	52,142.218	49,374.531	PK NAIL



NOTES:

- COORDINATES SHOWN ARE BASED ON THE 1973 CITY OF PENDELTON HORIZONTAL CONTROL NETWORK USING O.D.O.T. ESTABLISHED CONTROL POINTS AS SHOWN.
- MONUMENTS SET ON MARCH 11, 2011
- NO INVESTIGATION WAS MADE IN REGARDS TO THE INTEGRITY OF THE POSITION OF THE MONUMENTS REPLACED. THEY WERE RESET AT THE FOUND LOCATION.



MATCH TO SHEET 1)

LEGEND:

- SET MAG SURVEY MARKER, 1" DIA. HEAD X 3" LONG
- SET 2-1/2" DIA. BRASS CAP WITH 4" STEM, FLUSH IN PAVEMENT
- ▲ FOUND O.D.O.T. CONTROL POINT AS NOTED

REMONUMENTED POINTS:

POINT#	NORTHING	EASTING	MON. FOUND	MONUMENT SET
127:	50,476.830	44,945.979	PK NAIL	MAG SPIKE SURVEY MARKER
128:	50,829.821	46,778.325	2-1/2" BRASS CAP	2-1/2" BRASS CAP
129:	51,205.715	46,614.104	2-1/2" BRASS CAP	2-1/2" BRASS CAP
130:	51,250.332	47,740.542	PK NAIL	MAG SPIKE SURVEY MARKER
131:	51,413.882	47,090.701	2-1/2" BRASS CAP	2-1/2" BRASS CAP
132:	51,626.183	47,576.422	PK NAIL	MAG SPIKE SURVEY MARKER

REGISTERED PROFESSIONAL LAND SURVEYOR

(Signature)

OREGON
 JULY 13, 1999
 BENJAMIN B. BESEDA
 50800

EXPIRES 12/31/2011

Umatilla County Surveyors

Date: 4-11

Drawn By: *(Signature)*

PH: 541-296-8

Date	No.	Revisions	By	App.
REMONUMENTATION SURVEY				
FOR PIONEER CONSTRUCTION				
IN THE NORTH 1/2 OF SECTION 10 AND IN THE				
NW1/4 OF SECTION 11, TWP.2N., R.32E., W.M.				
CITY OF PENDELTON				
UMATILLA COUNTY, OREGON				
TENNISON ENGINEERING CORP.				
CONSULTING ENGINEERS				
3313 W. 2ND. STREET, Suite 100				
THE DALLES, OREGON 97068				
PH. 541-296-9177			FAX 541-296-6657	
Survey	Calculation	Design	Date	Scale
B.R.H.	B.B.B.		4/6/2011	1"=200'
Drawn	DWG. No.	Work Order No.	Sheet	
S.D.H.	K:\ACAD\13200\13246svy.dwg	13246	2 of 2	