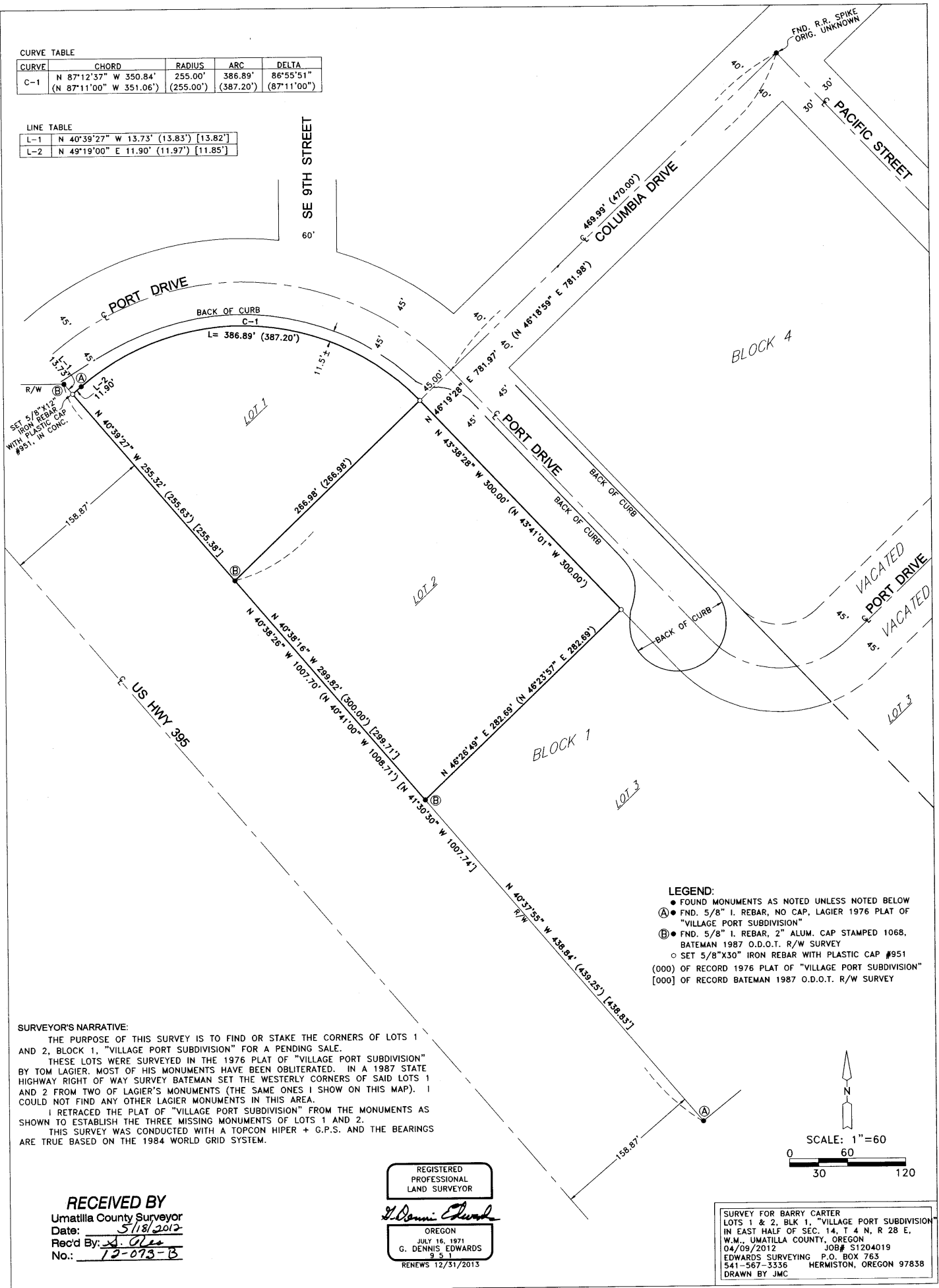


CURVE TABLE

CURVE	CHORD	RADIUS	ARC	DELTA
C-1	N 87°12'37" W 350.84' (N 87°11'00" W 351.06')	255.00' (255.00')	386.89' (387.20')	86°55'51" (87°11'00")

LINE TABLE

L-1	N 40°39'27" W 13.73' (13.83') [13.82']
L-2	N 49°19'00" E 11.90' (11.97') [11.85']



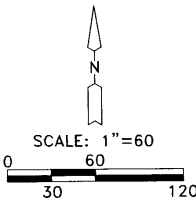
- LEGEND:**
- FOUND MONUMENTS AS NOTED UNLESS NOTED BELOW
  - Ⓐ FND. 5/8" I. REBAR, NO CAP, LAGIER 1976 PLAT OF "VILLAGE PORT SUBDIVISION"
  - Ⓑ FND. 5/8" I. REBAR, 2" ALUM. CAP STAMPED 1068, BATEMAN 1987 O.D.O.T. R/W SURVEY
  - SET 5/8"x30" IRON REBAR WITH PLASTIC CAP #951 (000) OF RECORD 1976 PLAT OF "VILLAGE PORT SUBDIVISION" [000] OF RECORD BATEMAN 1987 O.D.O.T. R/W SURVEY

**SURVEYOR'S NARRATIVE:**

THE PURPOSE OF THIS SURVEY IS TO FIND OR STAKE THE CORNERS OF LOTS 1 AND 2, BLOCK 1, "VILLAGE PORT SUBDIVISION" FOR A PENDING SALE. THESE LOTS WERE SURVEYED IN THE 1976 PLAT OF "VILLAGE PORT SUBDIVISION" BY TOM LAGIER. MOST OF HIS MONUMENTS HAVE BEEN OBLITERATED. IN A 1987 STATE HIGHWAY RIGHT OF WAY SURVEY BATEMAN SET THE WESTERLY CORNERS OF SAID LOTS 1 AND 2 FROM TWO OF LAGIER'S MONUMENTS (THE SAME ONES I SHOW ON THIS MAP). I COULD NOT FIND ANY OTHER LAGIER MONUMENTS IN THIS AREA. I RETRACED THE PLAT OF "VILLAGE PORT SUBDIVISION" FROM THE MONUMENTS AS SHOWN TO ESTABLISH THE THREE MISSING MONUMENTS OF LOTS 1 AND 2. THIS SURVEY WAS CONDUCTED WITH A TOPCON HIPER + G.P.S. AND THE BEARINGS ARE TRUE BASED ON THE 1984 WORLD GRID SYSTEM.

**RECEIVED BY**  
 Umatilla County Surveyor  
 Date: 5/18/2012  
 Rec'd By: A. Allen  
 No.: 12-073-B

REGISTERED PROFESSIONAL LAND SURVEYOR  
*G. Dennis Edwards*  
 OREGON  
 JULY 16, 1971  
 G. DENNIS EDWARDS  
 9 5 1  
 RENEWS 12/31/2013



SURVEY FOR BARRY CARTER  
 LOTS 1 & 2, BLK 1, "VILLAGE PORT SUBDIVISION  
 IN EAST HALF OF SEC. 14, T 4 N, R 28 E,  
 W.M., UMATILLA COUNTY, OREGON  
 04/09/2012 JOB# S1204019  
 EDWARDS SURVEYING P.O. BOX 763  
 541-567-3336 HERMISTON, OREGON 97838  
 DRAWN BY JMC