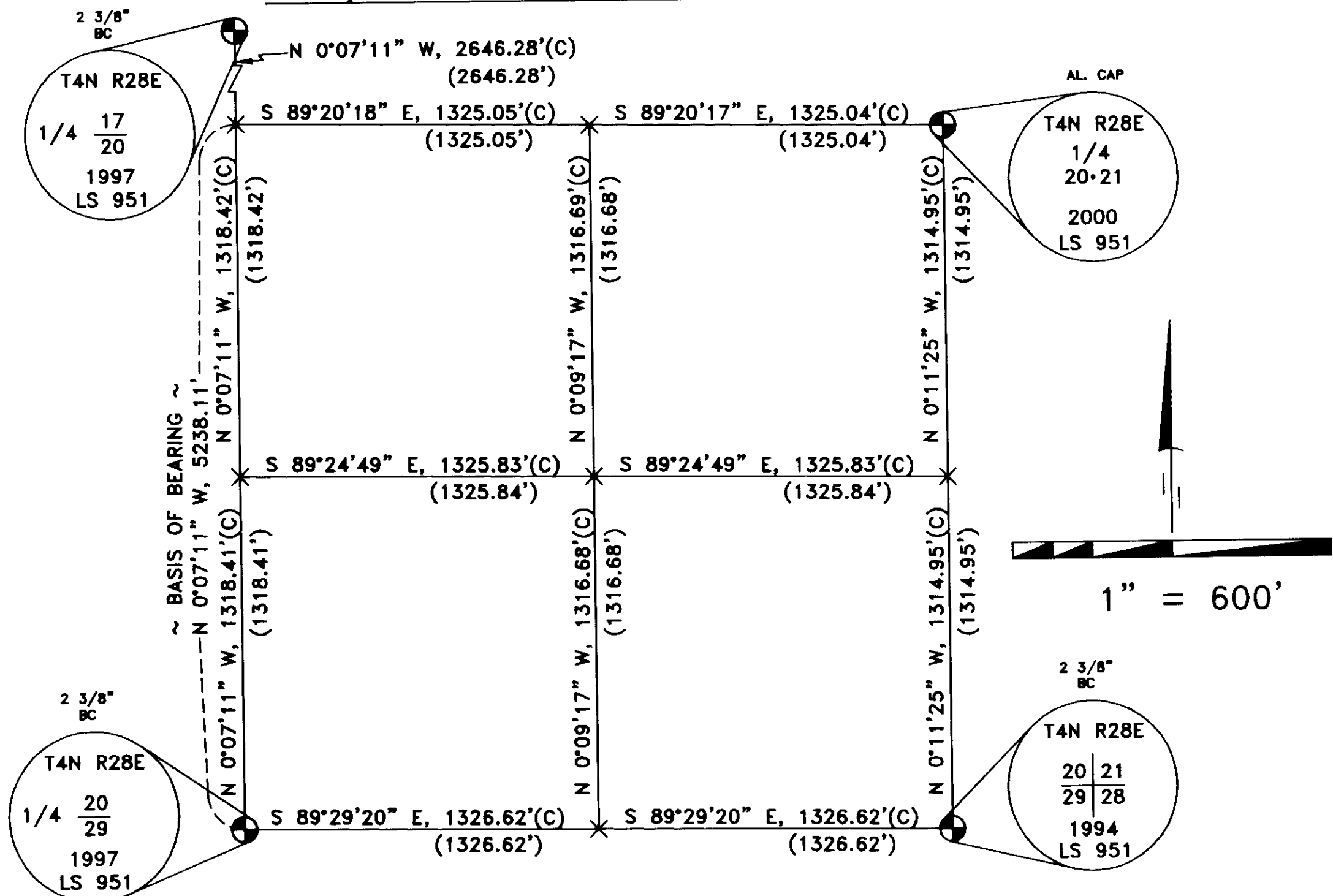


RECORD OF SURVEY

A RECORD OF SURVEY OF THE PROPERTY AS DESCRIBED ON INSTRUMENT NUMBER 2012-5920562 AND INSTRUMENT NUMBER 2008-5400361 LOCATED IN THE SE 1/4, SEC. 20, TWP. 4 N., RNG. 28 E.W.M. UMATILLA COUNTY, OREGON.

CLIENT: **BRANDON T. CHRISTENSEN**
 P.O. BOX 1716
 HERMISTON, OR 97838

SE 1/4, SEC. 20, T4N, R28, E.W.M.



SURVEYOR'S NARRATIVE

THIS SURVEY WAS UNDERTAKEN IN DECEMBER OF 2012 AT THE REQUEST OF BRANDON T. CHRISTENSEN. THE PURPOSE OF THE SURVEY IS TO MONUMENT THE PROPERTY AS DESCRIBED ON INSTRUMENT NUMBER 2012-5920562 AND INSTRUMENT NUMBER 2008-5400361.

THE SUBDIVISION OF SECTION 20 OF TOWNSHIP 4 NORTH, RANGE 28, EAST OF THE WILLAMETTE MERIDIAN, UMATILLA COUNTY, OREGON WAS HELD FROM SURVEY NUMBER 97-169-B.

THE PROPERTY CORNERS WERE ESTABLISHED AS FOLLOWS:

INSTRUMENT NUMBER 2012-5920562

- *THE NORTHEAST CORNER WAS CALCULATED FROM THE DEED DISTANCE OF 499.69' FROM SECTION LINE AND THE 33' ROW OF KELLER ROAD.
- *THE NORTHWEST CORNER WAS CALCULATED FROM THE DEED DISTANCE OF 499.69' FROM SECTION LINES.
- *THE SOUTHWEST CORNER WAS CALCULATED FROM THE DEED DISTANCE OF 499.69' FROM SECTION LINE AND THE 33' ROW OF DESPAIN GULCH ROAD.
- *THE SOUTHEAST CORNER WAS CALCULATED FROM THE 33' ROW'S OF KELLER ROAD AND DESPAIN GULCH ROAD.

INSTRUMENT NUMBER 2008-5400361

- *THE SOUTHEAST CORNER WAS CALCULATED FROM THE DEED DISTANCE OF 499.69' FROM THE SECTION LINE AND THE 33' ROW OF KELLER ROAD.
- *THE NORTHEAST CORNER WAS CALCULATED FROM THE DEED DISTANCE OF 342.01' FROM THE SOUTHEAST CORNER, TAKING INTO CONSIDERATION THE 33' ROW OF KELLER ROAD.
- *THE NORTHWEST COMPUTED CORNER WAS CALCULATED FROM THE DEED DISTANCE OF 389.35' FROM THE SOUTHWEST CORNER.
- *THE EAST NORTHWEST CORNER WAS CALCULATED FROM THE DEED DISTANCE OF 389.35' FROM THE SOUTHWEST CORNER AND TAKING INTO CONSIDERATION THE 30 FOOT ROW OF THE "A" LINE CANAL.
- *THE SOUTH NORTHWEST CORNER WAS CALCULATED FROM THE DEED DISTANCE OF 389.35' FROM THE SOUTHWEST CORNER AND TAKING INTO CONSIDERATION THE 30 FOOT ROW OF THE "A" LINE CANAL.
- *THE SOUTHWEST CORNER WAS CALCULATED FROM THE DEED DISTANCE OF 485.59' FROM THE SECTION LINE AND THE 33' ROW OF DESPAIN GULCH ROAD.
- *THE CENTER SOUTH CORNER WAS CALCULATED FROM THE DEED CALL FROM THE SOUTHWEST CORNER TO THE WEST LINE OF THE PROPERTY AS DESCRIBED ON INST. NO. 2012-5920562.
- *THE CENTER NORTH CORNER WAS CALCULATED FROM THE DEED CALL FROM THE CENTER SOUTH CORNER TO THE NORTHWEST CORNER AS DESCRIBED ON INST. NO. 2012-5920562.

THE BASIS OF BEARING OF THIS SURVEY ARE THE FOUND MONUMENTS MARKING THE NORTH 1/4 CORNER AND THE SOUTH 1/4 CORNER OF SECTION 20, TOWNSHIP 4 NORTH, RANGE 28, EAST OF THE WILLAMETTE MERIDIAN AND IS BASED ON SURVEY NUMBER 97-169-B.

THIS SURVEY WAS ACCOMPLISHED UTILIZING 2 TRIMBLE R-8 GNSS RECEIVERS. AN AUTONOMOUS POSITION WAS GENERATED ON THE BASE UNIT AND THE TWO PREVIOUSLY MENTIONED FOUND RECTANGULAR CORNERS WERE SUBSEQUENTLY USED FOR LOCALIZING THE SYSTEM, EACH CORNER WAS THEN LOCATED OR SET ON A 15 SECOND EPOCH WITH A FIXED SOLUTION.

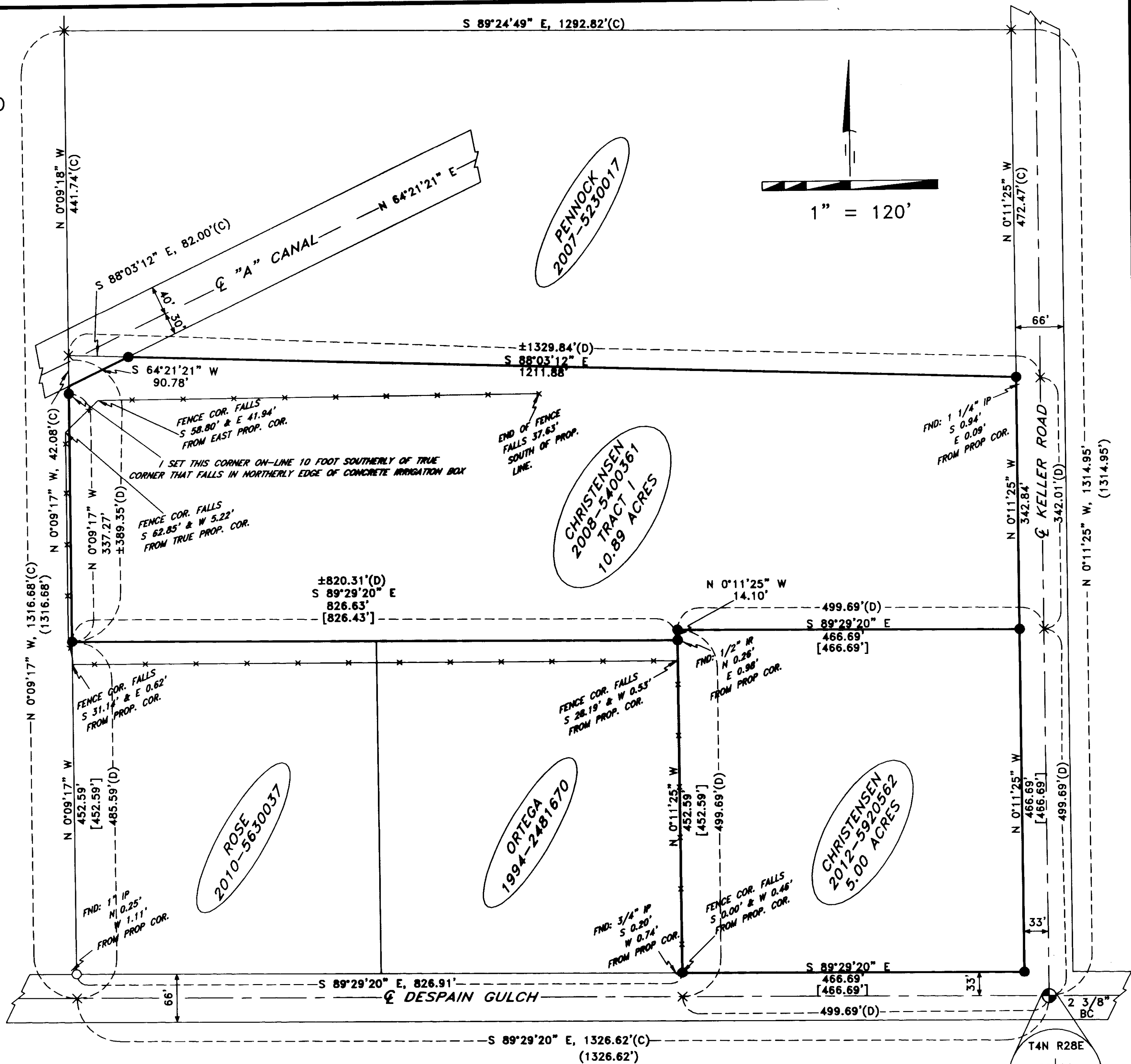
DEEDS

CHRISTENSEN INSTRUMENT NUMBER 2012-5920562
 CHRISTENSEN INSTRUMENT NUMBER 2008-5400361
 PENNOCK INSTRUMENT NUMBER 2007-5230017
 ROSE INSTRUMENT NUMBER 2010-5630037
 ORTEGA INSTRUMENT NUMBER 1994-2481670

NOTES

- [] EDWARDS FOR QUINONEZ NO. 90-27-A
- () EDWARDS NAPOLITANO NO. 97-169-B
- (D) DEED
- (C) CALCULATED

RECEIVED BY
 Umatilla County Surveyor
 Date: 1/10/2013
 Rec'd By: S. Oles
 No.: 13-005-B



SURVEYOR'S CERTIFICATION

I, BRIT L. PRIMM, A PROFESSIONAL LAND SURVEYOR IN THE STATE OF OREGON HEREBY CERTIFY THAT THIS MAP CORRECTLY REPRESENTS A SURVEY CONDUCTED UNDER MY DIRECT SUPERVISION IN DECEMBER 2012, IN CONFORMANCE WITH THE REQUIREMENTS OF THE SURVEY RECORDING LAW, AS ESTABLISHED BY ORS CHAPTER 92, AND HAVE SET THE PROPER MONUMENTS.

REGISTERED PROFESSIONAL LAND SURVEYOR

 OREGON
 JULY 13, 1999
 BRIT L. PRIMM
 48509
 EXPIRATION DATE: 12/31/14

DATE: 10 JAN 13

LEGEND

- SET 5/8" X 30" IRON ROD WITH YELLOW PLASTIC CAP STAMPED "PLS LS 48509"
- ⊕ FOUND MONUMENT AS NOTED
- × COMPUTED POINT (NOT SET)
- FOUND 5/8" IRON ROD WITH YELLOW PLASTIC CAP STAMPED "951"
- PROPERTY BOUNDARY
- *- FENCE AS NOTED

SURVEYS

- EDWARDS FOR NAPOLITANO (1997) SURVEY NUMBER 97-169-B
- EDWARDS FOR QUINONEZ (1990) SURVEY NUMBER 90-27-A
- EDWARDS FOR DAVIS PARTITION PLAT 1999-19
- EDWARDS FOR GERTSCH PARTITION PLAT 2001-41
- EDWARDS FOR DAVIS (1984) SURVEY NUMBER 84-11-A
- EDWARDS FOR NEWMAN (1986) SURVEY NO. 86-68-A

PRIMM LAND SURVEYING, INC.

 P.O. BOX 1322, 1340 N.E. 4TH
 HERMISTON, OR 97838
 BUI (541) 564-7887
 FAX (541) 567-8020
 pls@oregontrall.net

CLIENT: **BRANDON T. CHRISTENSEN**
 SE 1/4, SEC 20, TWP. 4 N. RNG. 28 E. WM
 PROJECT:
 BOUNDARY SURVEY OF THE PROPERTY AS DESCRIBED ON 2012-5920562 AND 2008-5400361 LOCATED IN THE SE 1/4 OF SECTION 20, TOWNSHIP 4 NORTH, RANGE 28, EAST OF THE W.M., UMATILLA COUNTY, OR.
 JOB #: 1212001
 DATE: 26 DEC 12
 FB/PG: 031/48
 SHEET: 1 OF 1
 DRAWN: BLP
 APPROVED: BLP