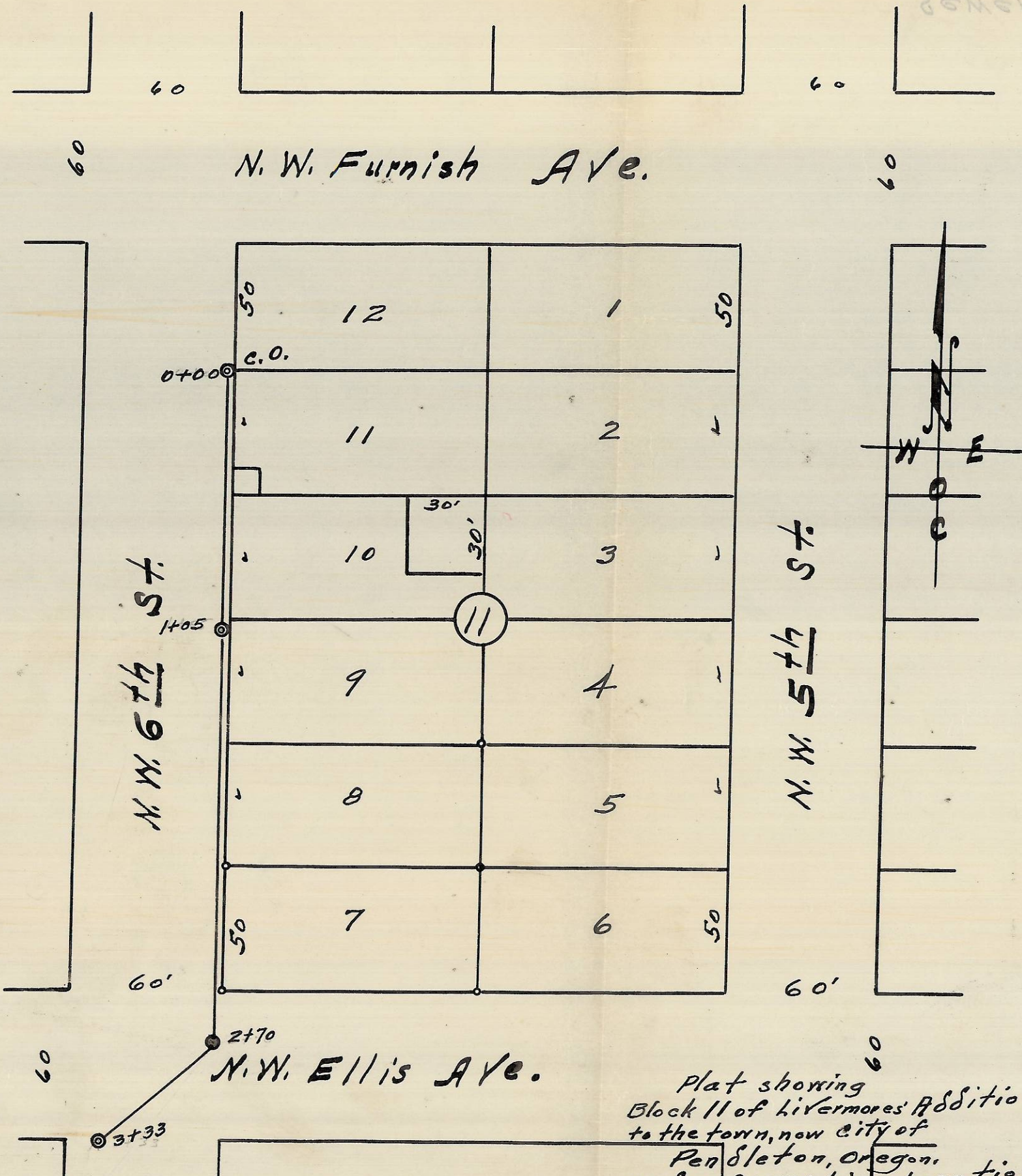
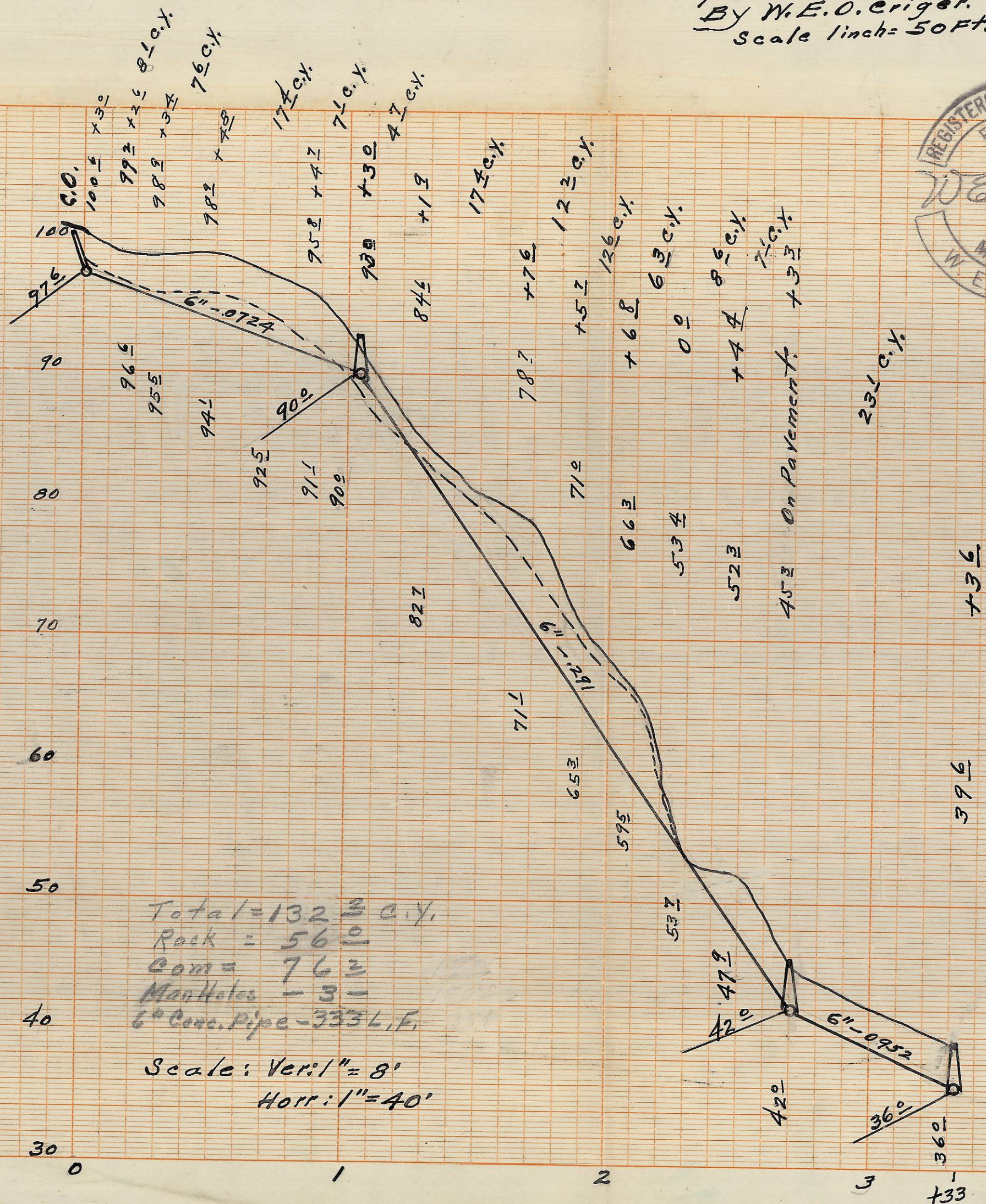


20000 1100-DUMPH-102-9401



Plat showing Block 11 of Livermore's Addition to the town, now city of Pendleton, Oregon, and - Sewer Line Location surveyed, stated and platted Sept. 1950 By W. E. O. Criger. Scale 1 inch = 50 ft.



Total = 132 2/3 c.y.
 Rock = 56 0
 Com = 76 2
 Manholes = 3
 6" Conc. Pipe = 333 L.F.
 Scale: Ver: 1" = 8'
 Hor: 1" = 40'

RECEIVED BY
 Umatilla County Surveyor
 Date: 2/21/13
 Rec'd By: J. Tolbert
 No.: 13-095-B