

# RECORD OF SURVEY

## FOR: BONNEVILLE POWER ADMINISTRATION

### McNary Substation

IN THE S1/2 SECTION 9 & N1/2 SECTION 16  
TOWNSHIP 5 NORTH, RANGE 28 EAST,  
UMATILLA COUNTY, OREGON

#### BASIS OF BEARINGS

The Basis of Bearing for this survey is the Oregon Coordinate System of 1983 North Zone 3601, using a GPS static observation processed through the Online Positioning User Service (OPUS) provided by the National Geodetic Survey (NGS). All bearings and coordinates shown are grid and the distances shown are ground using a combined adjustment factor of 1.00003026. A convergence angle of 0°50'18" should be used to convert the grid bearings shown to geodetic bearings. The coordinates shown are on a project reference frame based on NAD83, (2011)(EPOCH : 2010.0000).

The OPUS position for project control was derived using the following NGS CORS Stations:

PID	DESIGNATION	LATITUDE	LONGITUDE
DN5846	PDTN PENDLETON	453957.391	1184524.883
CQ6015	LINH LIND HALL	470001.191	1203218.545
DH4096	P451 WSUOTHELO_WA2004	464734.014	1190228.842

#### LEGEND

- CALCULATED POINT, NOTHING SET
- FOUND MONUMENT (AS NOTED) SEE SHEET 4
- ⊙ SET 3/4" ALUMINUM CAP ON 5/8" REBAR MARKED PLS 64248
- BONNEVILLE POWER ADMINISTRATION EXTERIOR OWNERSHIP BOUNDARY
- BONNEVILLE POWER ADMINISTRATION INTERIOR TRACT BOUNDARY
- FOREIGN RIGHT OF WAY
- (J-13) PLS CORNER INDEX (SEE SHEET 4)

#### PURPOSE OF SURVEY

This survey was performed at the request of the Bonneville Power Administration (BPA) for the purpose of monumenting the boundaries of existing BPA Fee Parcels and Permanent Easement tracts that are a part of the McNary Substation.

#### SURVEYOR'S CERTIFICATE

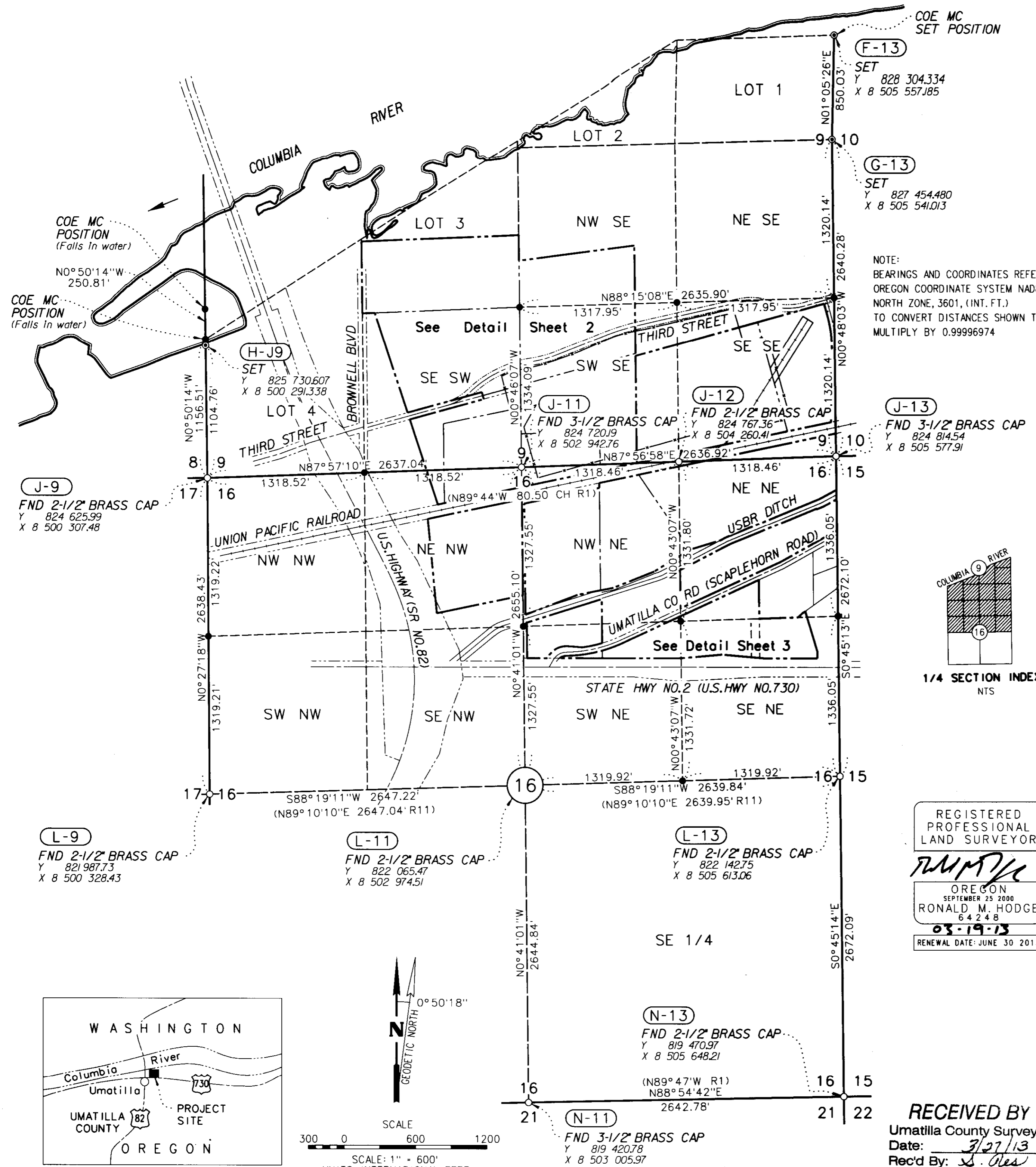
I, Ronald M. Hodge, Professional Land Surveyor in the State of Oregon, do hereby certify that this survey was made by me or under my supervision for Bonneville Power Administration.

#### TITLE NOTES

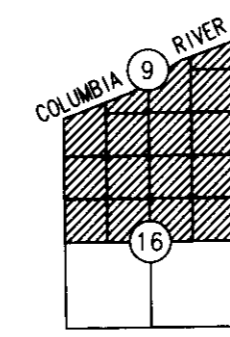
1. This survey is based in part upon a Status of Record Title dated December 3, 2012 from Amerititle of Pendleton Oregon and Title Commitment order/file No. 0070482, effective date: November 15, 2012 from Amerititle of Pendleton Oregon.

#### METHOD OF SURVEY

This survey was performed using Trimble 4000 and Trimble R8 GPS receivers utilizing both Static and RTK observations, processed using OPUS and Trimble Business Center.



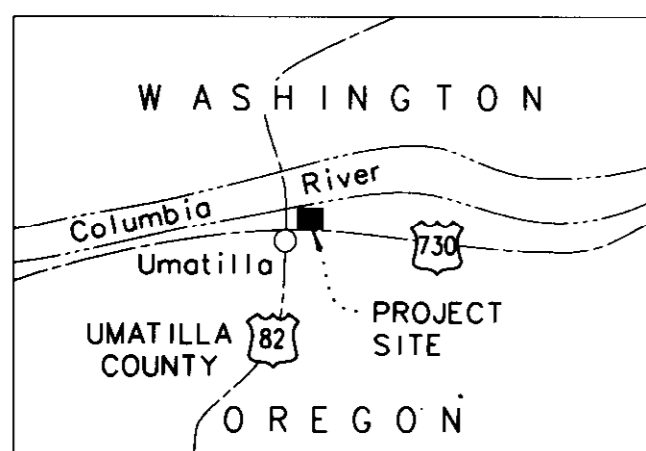
NOTE:  
BEARINGS AND COORDINATES REFERRED TO OREGON COORDINATE SYSTEM NAD83 (2011) NORTH ZONE, 3601, (INT. FT.)  
TO CONVERT DISTANCES SHOWN TO GRID MULTIPLY BY 0.99996974



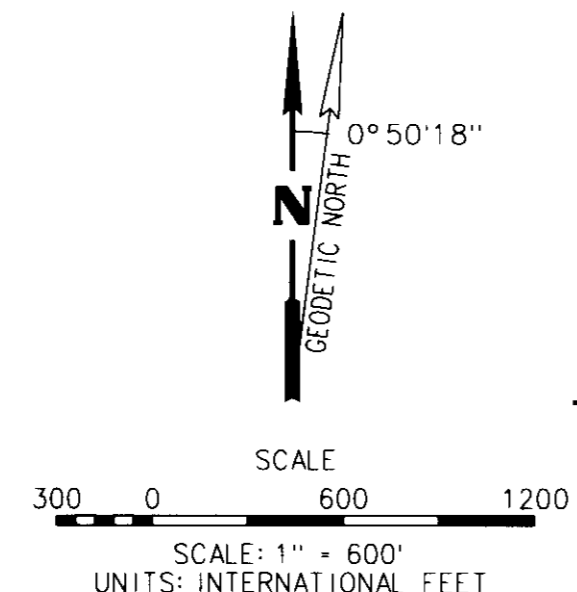
1/4 SECTION INDEX  
NTS

REGISTERED  
PROFESSIONAL  
LAND SURVEYOR

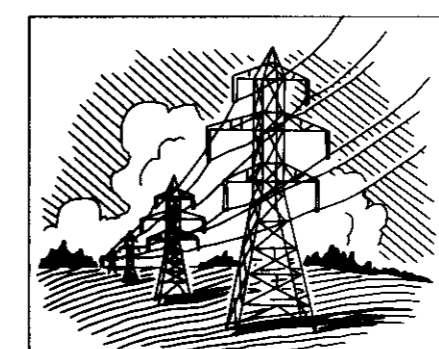
*Ronald M. Hodge*  
OREGON  
SEPTEMBER 25 2000  
RONALD M. HODGE  
64248  
03-19-13  
RENEWAL DATE: JUNE 30 2013



VICINITY MAP, NTS



RECEIVED BY  
Umatilla County Surveyor  
Date: 3/27/13  
Rec'd By: S. Oles  
No.: 13-129-B



McNary Substation	
COLUMBIA SURVEYS, PLLC 303 Church Street Sandpoint, ID 83864 1-877-563-2192	
Scale: 1" = 600'	
Checked By: SLT	Drawn By: KLK/TRM
Date: 2-11-13	Sheet: 1 of 5

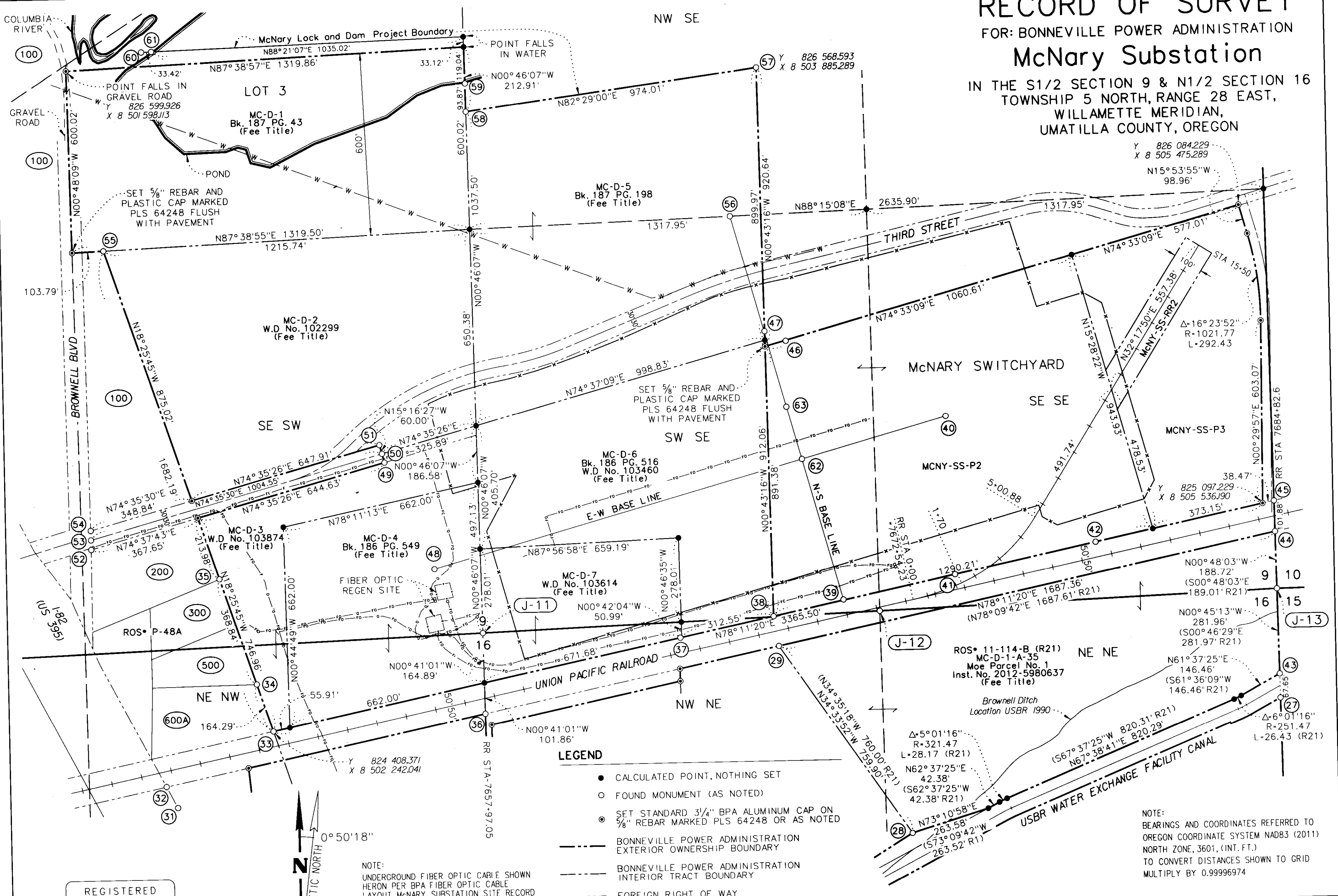
# RECORD OF SURVEY

## FOR: BONNEVILLE POWER ADMINISTRATION

### McNary Substation

IN THE S1/2 SECTION 9 & N1/2 SECTION 16  
TOWNSHIP 5 NORTH, RANGE 28 EAST,  
WILLAMETTE MERIDIAN,  
UMATILLA COUNTY, OREGON

Y 826 084.229  
X 8 505 475.289  
N15°53'55"W  
98.96'



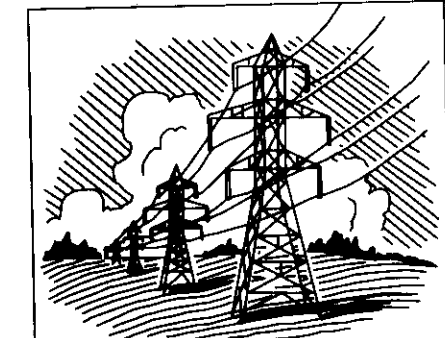
- LEGEND**
- CALCULATED POINT, NOTHING SET
  - FOUND MONUMENT (AS NOTED)
  - ⊙ SET STANDARD 3/4" BPA ALUMINUM CAP ON 5/8" REBAR MARKED PLS 64248 OR AS NOTED
  - BONNEVILLE POWER ADMINISTRATION EXTERIOR OWNERSHIP BOUNDARY
  - BONNEVILLE POWER ADMINISTRATION INTERIOR TRACT BOUNDARY
  - - - FOREIGN RIGHT OF WAY
  - w- UNDERGROUND WATER LINE
  - o-o- UNDERGROUND FIBER OPTIC
  - ① CORNER MONUMENT (SEE SHEET 5)
  - ②00 ADJOINER (SEE SHEET 5)
  - J-13 PLSS CORNER INDEX (SEE SHEET 4)

NOTE:  
BEARINGS AND COORDINATES REFERRED TO OREGON COORDINATE SYSTEM NAD83 (2011) NORTH ZONE, 3601, (INT. FT.) TO CONVERT DISTANCES SHOWN TO GRID MULTIPLY BY 0.99996974

REGISTERED PROFESSIONAL LAND SURVEYOR  
*Ronald M. Hodge*  
OREGON  
SEPTEMBER 25 2000  
RONALD M. HODGE  
64248  
03-19-13  
RENEWAL DATE: JUNE 30 2013

SCALE  
100 0 200 400  
SCALE: 1" = 200'  
UNITS: INTERNATIONAL FEET

RECEIVED BY  
Umatilla County Surveyor  
Date: 3/27/13  
Rec'd By: *S. Allen*  
No.: 13-129-B



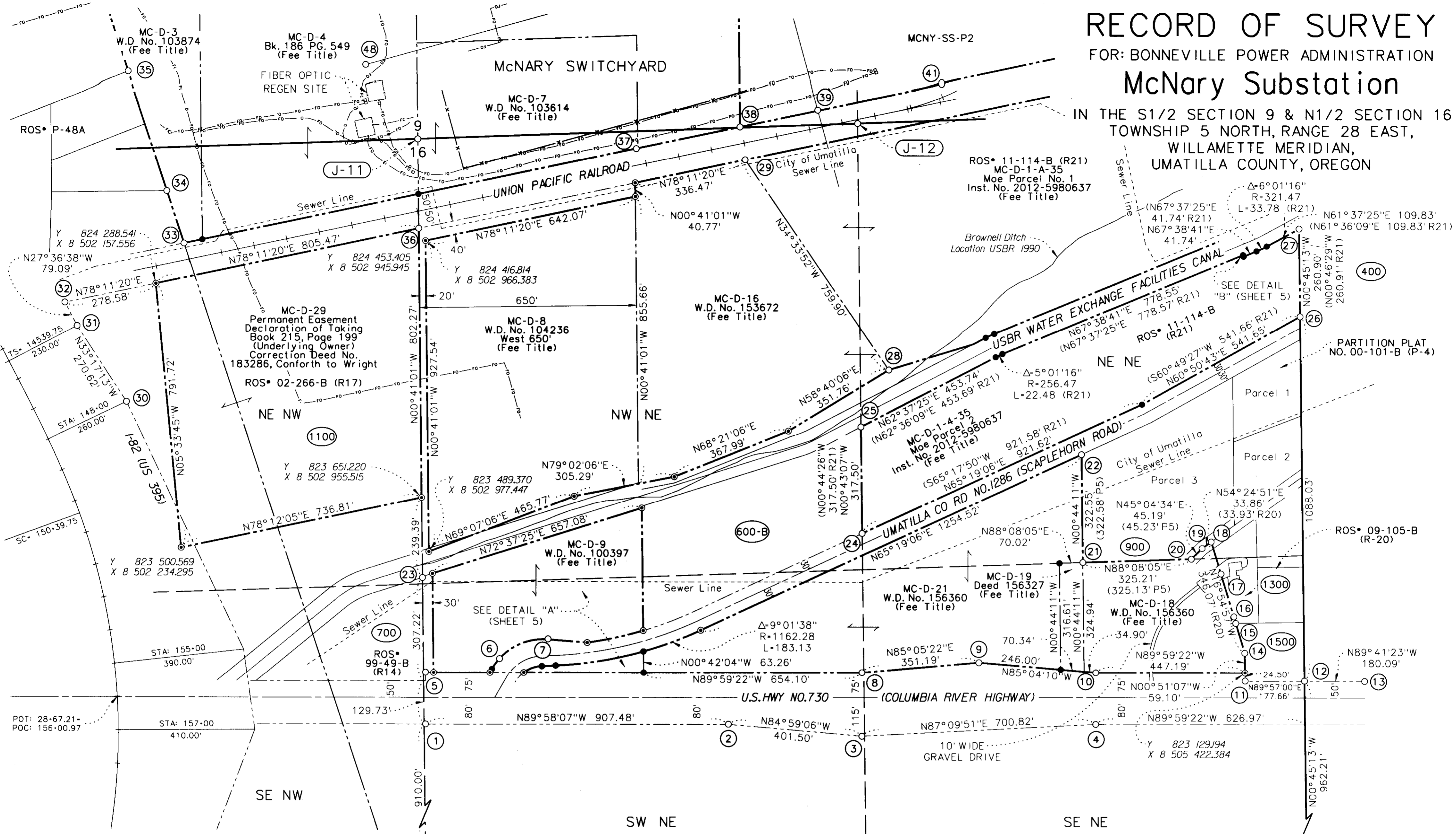
McNary Substation  
COLUMBIA SURVEYS, PLLC  
303 Church Street  
Sandpoint, ID 83864  
1-877-563-2192  
Scale: 1" = 200'  
Checked By: SLT  
Date: 2-11-13  
Drawn By: KLK/TRM  
Sheet: 2 of 5

# RECORD OF SURVEY

FOR: BONNEVILLE POWER ADMINISTRATION

## McNary Substation

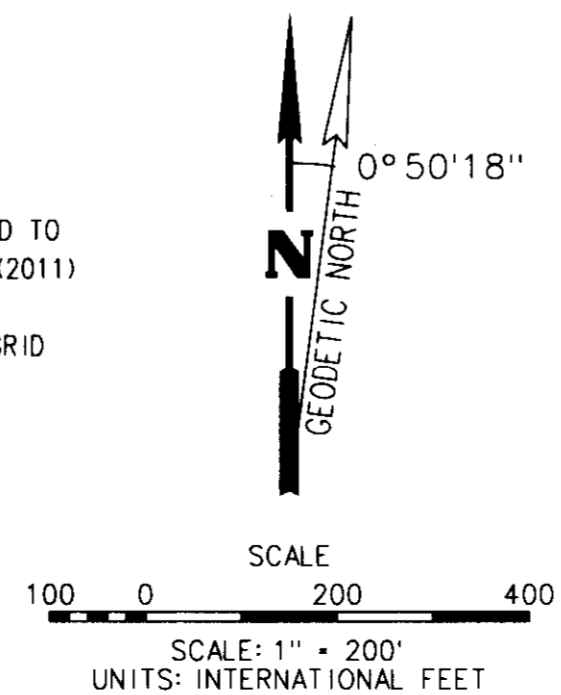
IN THE S1/2 SECTION 9 & N1/2 SECTION 16  
TOWNSHIP 5 NORTH, RANGE 28 EAST,  
WILLAMETTE MERIDIAN,  
UMATILLA COUNTY, OREGON



- LEGEND**
- CALCULATED POINT, NOTHING SET
  - FOUND MONUMENT (AS NOTED)
  - ⊙ SET STANDARD 3/4" BPA ALUMINUM CAP ON 5/8" REBAR MARKED PLS 64248
  - BONNEVILLE POWER ADMINISTRATION EXTERIOR OWNERSHIP BOUNDARY
  - BONNEVILLE POWER ADMINISTRATION INTERIOR TRACT BOUNDARY
  - FOREIGN RIGHT OF WAY
  - SEWER LINE
  - UNDERGROUND FIBER OPTIC
  - ① CORNER MONUMENT (SEE SHEET 5)
  - ⑫ ADJOINER (SEE SHEET 5)
  - J-13 PLSS CORNER INDEX (SEE SHEET 4)

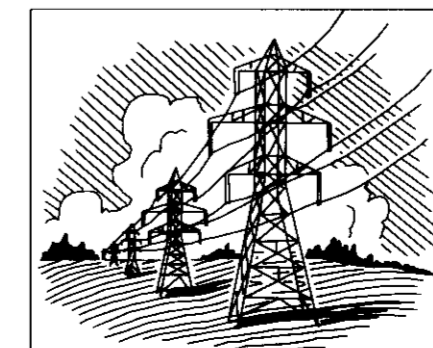
NOTE:  
BEARINGS AND COORDINATES REFERRED TO OREGON COORDINATE SYSTEM NAD83 (2011) NORTH ZONE, 3601, (INT. FT.) TO CONVERT DISTANCES SHOWN TO GRID MULTIPLY BY 0.99996974

**RECEIVED BY**  
Umatilla County Surveyor  
Date: 5/27/13  
Rec'd By: S. Dea  
No.: 13-129-B



REGISTERED PROFESSIONAL LAND SURVEYOR  
*RONALD M. HODGE*  
OREGON  
SEPTEMBER 25, 2000  
RONALD M. HODGE  
64248  
03-19-13  
RENEWAL DATE: JUNE 30 2013

NOTE:  
UNDERGROUND FIBER OPTIC CABLE SHOWN HERON PER BPA FIBER OPTIC CABLE LAYOUT McNARY SUBSTATION SITE RECORD DRAWING, DATED FEB. 22, 2012.



McNary Substation

COLUMBIA SURVEYS, PLLC  
303 Church Street  
Sandpoint, ID 83864  
1-877-563-2192

Scale: 1" = 200'

Checked By: SLT	Drawn By: KLK/TRM
Date: 2-11-13	Sheet: 3 of 5

# RECORD OF SURVEY

FOR: BONNEVILLE POWER ADMINISTRATION  
**McNary Substation**  
 IN THE S1/2 SECTION 9 & N1/2 SECTION 16  
 TOWNSHIP 5 NORTH, RANGE 28 EAST,  
 WILLAMETTE MERIDIAN,  
 UMATILLA COUNTY, OREGON

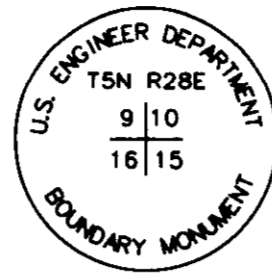
**F-13**

8001  
 SET 3/4" ALUMINUM CAP 0.4' BELOW GROUND ON 5/8" REBAR  
 MARKED AS SHOWN, FROM WHICH:  
 A FOUND 5/8" REBAR BEARS N18°E, 54.50 FT. DIST.  
 A 4" STEEL POLE ±30' TALL WITH NESTING PLATFORM BEARS  
 N55°W, 73.37 FT. DIST.  
 A CARSONITE POST WITH "SURVEY MARKER" DECAL BEARS EAST,  
 1.2 FT. DIST.



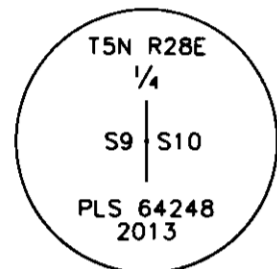
**J-13**

30001  
 FOUND 3/2" BRASS CAP 0.6' BELOW GROUND.  
 CORNER RESTORATION FORM ON FILE INST. NO. 98-101-C.



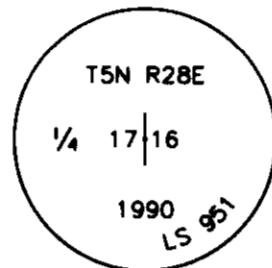
**G-13**

8002  
 SET 3/4" ALUMINUM CAP ON 5/8" REBAR 0.3' BELOW GROUND MARKED  
 AS SHOWN, FROM WHICH:  
 A 3/8" REBAR WITH PLASTIC CAP BEARS N32°W, 11.72 FT. DIST.  
 A 3/8" REBAR WITH PLASTIC CAP BEARS N50°E, 18.77 FT. DIST.  
 NE CORNER OF BRIDGE BEARS S25°W, 12.0 FT. DIST.  
 NW POWER LINE TOWER FOOTING BEARS S64°E, 41.1 FT. DIST.  
 A CARSONITE POST W/SURVEY MARKER DECAL BEARS NW 6.0 FT.



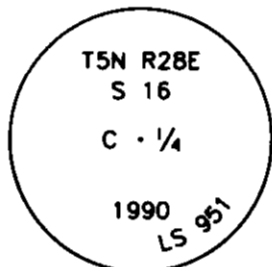
**L-9**

30756  
 FOUND 2 1/2" BRASS CAP.  
 CORNER RESTORATION FORM ON FILE INST. NO. 98-101-C.



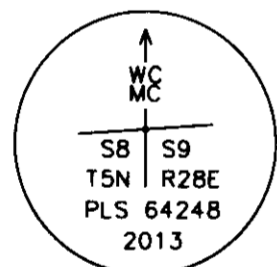
**L-11**

30269  
 FOUND 2 1/2" BRASS CAP 0.1' BELOW ROAD SURFACE, SET  
 BY LS 951, G. DENNIS EDWARDS, ROS NO. 91-01-B.



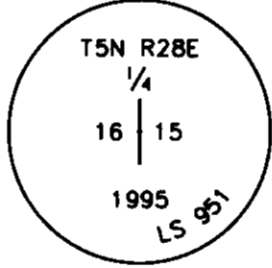
**H-J9**

8000  
 SET 3/4" ALUMINUM CAP ON 5/8" REBAR 0.3' BELOW GROUND MARKED  
 AS SHOWN FROM WHICH:  
 A 6" BIRCH WITH PLASTIC SHINER MARKED HODGE PLS 64248  
 BEARS S61°E, 14.97 FT. DIST.  
 A POWER POLE WITH PLASTIC SHINER MARKED HODGE PLS 64248  
 BEARS S66°W, 23.49 FT. DIST.  
 A CARSONITE W/SURVEY MARKER DECAL BEARS NORTH 1.0 FT.  
 DIST.



**L-13**

30267  
 FOUND 2 1/2" BRASS CAP 0.8' BELOW ROAD SURFACE.  
 CORNER RESTORATION FORM ON FILE INST. NO. 98-101-C.



**J-9**

30253  
 FOUND 2 1/2" BRASS CAP FLUSH WITH GROUND.  
 CORNER RESTORATION FORM ON FILE INST. NO. 98-101-C.



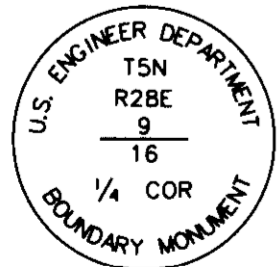
**N-11**

30794  
 FOUND 3 1/2" BRASS CAP 1' BELOW GROUND.  
 CORNER RESTORATION FORM ON FILE INST. NO. 98-101-C.



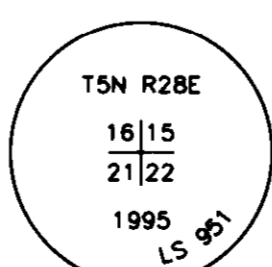
**J-11**

30002  
 FOUND 3 1/2" BRASS CAP.  
 CORNER RESTORATION FORM ON FILE INST. NO. 98-101-C.



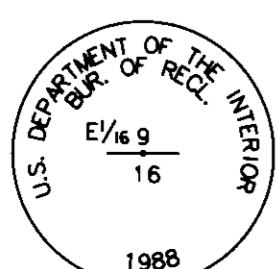
**N-13**

30792  
 FOUND 2 1/2" BRASS CAP 0.7' BELOW GROUND.



**J-12**

30239  
 FOUND 2 1/2" BRASS CAP.



**SURVEY REFERENCES**

- (R1) 1861 GLO BY TIMOTHY DAVENPORT CONTRACT NO. 101.
- (R2) 1943 GLO BY NORMAN D. PRICE, GROUP NO. 278.
- (R3) 1947 McNARY LOCK AND DAM MONUMENTED PROJECT BOUNDARY, SHEET 21.
- (R4) 1959 ROS BY PE 4376 AMBROSE J. SHEA.
- (R5) 1962 ROS BY RLS 506 RALPH P. THOMPSON.
- (R6) 1962-1972 JOHN DAY LOCK AND DAM PROJECT FILE NO. JD-17 / 26, SHEET 26.
- (R7) 1976 ROS BY PLS 933 DAVID H. KRUMBEIN.
- (R8) 1976 ROS BY PE 4376 AMBROSE J. SHEA.
- (R9) 1976 ROS BY PLS 996 RICHARD DAVIS.
- (R10) 1988 ROS BY PLS 951 G. DENNIS EDWARDS, NO. 88-45-C.
- (R11) 1990 ROS BY PLS 951 G. DENNIS EDWARDS, NO. 91-01-B.
- (R12) 1990 USBR WEST EXTENSION IRRIGATION DISTRICT WATER EXCHANGE, DWG 1022-100-55.
- (R13) 1998 ROS BY PLS 1106 WILLIAM R. WELLS, NO. 98-101-C.
- (R14) 1999 ROS BY PLS 2850 JUDSON L. COPPOCK, NO. 99-49-B.
- (R15) 1999 ROS BY PLS 951 G. DENNIS EDWARDS, NO. 00-59-A.
- (R16) 2001 ROS BY PLS 2627 GARY R. ROBERTS, NO. 01-86-C.
- (R17) 2002 ROS BY PLS 951 G. DENNIS EDWARDS, NO. 02-266-B.
- (R18) 2004 ROS BY PLS 48509 BRIT L. PRIMM, NO. 04-155-B.
- (R19) 2007 ROS BY PLS 02820LS GREG E. FLOWERS, NO. 07-196-C.
- (R20) 2009 ROS BY PLS 1106 WILLIAM R. WELLS, NO. 09-105-B.
- (R21) 2011 ROS BY PLS 64248 RONALD M. HODGE, NO. 11-114-B, BPA SERIAL 301329.
- (R22) 2011 ROS BY PLS 64248 RONALD M. HODGE, NO. 11-107-B, BPA SERIAL 301330.
- (P1) 1947 McNARY ADDITION BY P.E. 2190 FRANK D. TALBOT.
- (P2) 1948 UMATILLA HEIGHTS BY PE 2512 CECIL H. STORMS.
- (P3) 1949 SHEPLERS'S SUBDIVISION BY RLS 235 ARTHUR L. JESS.
- (P4) PARTITION PLAT 2000-20 BY PLS 2850 JUDSON L. COPPOCK, NO. 00-101-B.
- (P5) PARTITION PLAT 2001-48 BY PLS 951 G. DENNIS EDWARDS, NO. 01-166-B.

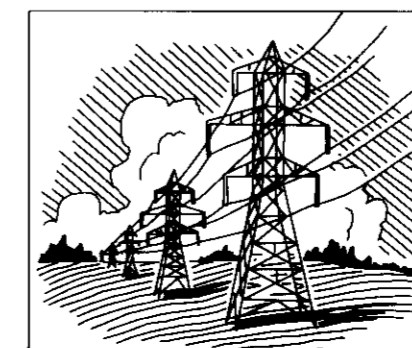
- 1946 BPA MILE MAP McNARY-PASCO LINE, SERIAL NO. 31302.
- 1952 BPA McNARY SWITCHYARD & POWERHOUSE MAP, SERIAL NO. 53760.
- 1956 BPA McNARY SWITCHYARD SOUTH CORRIDOR MAP, SERIAL NO. 56276A.
- 1993 BPA MILE MAP McNARY JOHN DAY NO 1, SERIAL NO. 264566.

**EASEMENTS OF RECORD**

1. RIGHT-OF-WAY DEED (NO WIDTH GIVEN) FOR ABOVE GROUND POWER LINE BENEFITING THE PACIFIC TELEPHONE AND TELEGRAPH COMPANY, DATED JULY 20, 1922, UMATILLA COUNTY RECORDS.
2. A PERPETUAL EASEMENT FOR ELECTRIC POWER TRANSMISSION STRUCTURES, DATED DEC. 4, 1953, RECORDS OF UMATILLA COUNTY.
3. A PERPETUAL EASEMENT FOR A SEWER LINE BENEFITING THE CITY OF UMATILLA, INSTRUMENT NO. 3490227, DATED APR. 16, 1999, UMATILLA COUNTY RECORDS.
4. A 10' WIDE EASEMENT FOR FIBER OPTIC DUCT SYSTEM BENEFITING LEVEL 3 COMMUNICATIONS, INSTRUMENT NO. 3620713, DATED DEC. 16, 1999, UMATILLA COUNTY RECORDS.
5. A 10' WIDE EASEMENT FOR UNDERGROUND COMMUNICATIONS SYSTEM BENEFITING LEVEL 3 COMMUNICATIONS, INSTRUMENT NO. 3640667, DATED JAN. 28, 2000, UMATILLA COUNTY RECORDS.
6. A PERPETUAL EASEMENT FOR AN ADVERTISING SIGN BENEFITING MEADOW OUTDOOR ADVERTISING, INSTRUMENT NO. 4290371, DATED JAN. 31, 2003, UMATILLA COUNTY RECORDS.

**RECEIVED BY**  
 Umatilla County Surveyor  
 Date: 3/27/2013  
 Rec'd By: J. P. [Signature]  
 No.: 13-129-B

REGISTERED  
 PROFESSIONAL  
 LAND SURVEYOR  
  
 OREGON  
 SEPTEMBER 25 2000  
 RONALD M. HODGE  
 64248  
 03-19-13  
 RENEWAL DATE: JUNE 30 2013

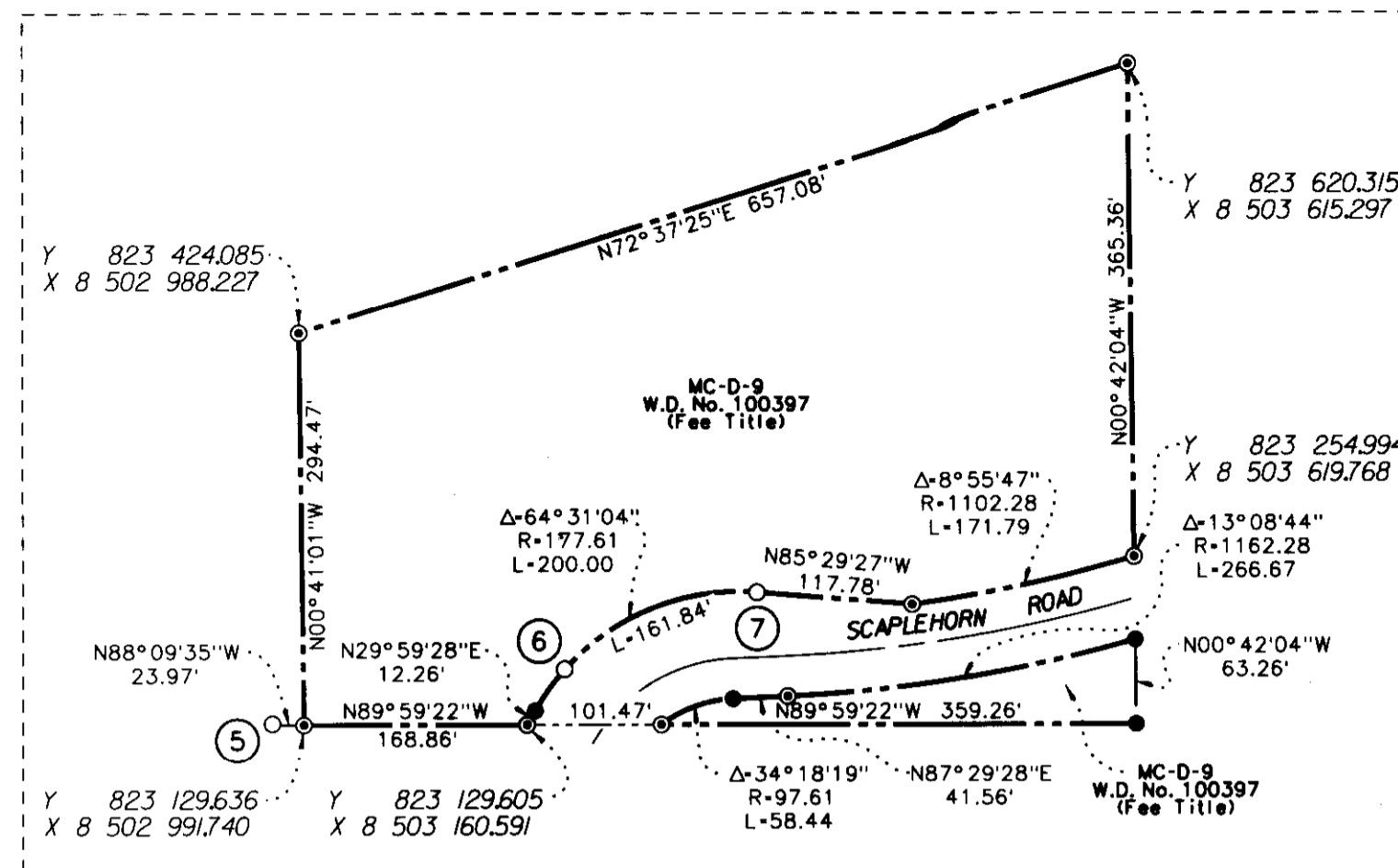


<b>McNary Substation</b>	
COLUMBIA SURVEYS, PLLC 303 Church Street Sandpoint, ID 83864 1-877-563-2192	Scale: N/A Checked By: SLT Date: 2-11-13 Drawn By: KLK/TRM Sheet: 4 of 5

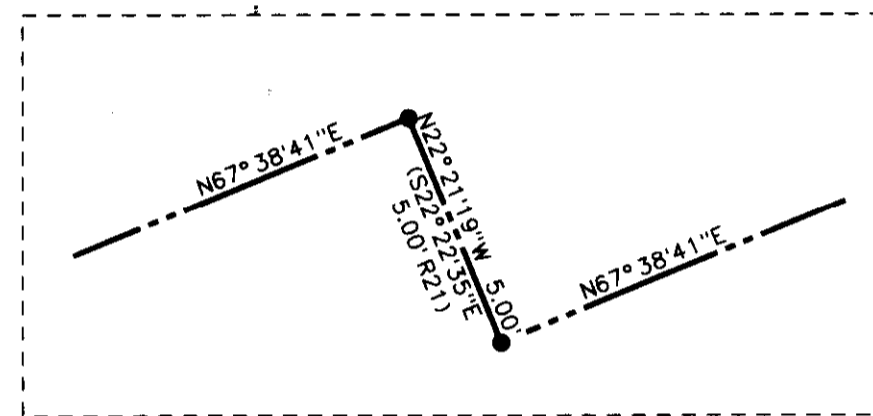


**CORNER MONUMENTATION**

1. 5/8" iron pin (bent), Highway 730 ROW Monument Sta. 37+92.50, 80' Right.
2. 5/8" rebar and cap by LS OSHD, Sta. 47+00, 80' Right.
3. 5/8" rebar and cap by LS OSHD, Sta. 51+00, 115' Right.
4. 5/8" rebar and cap by LS OSHD, Sta. 58+00, 80.0' Right.
5. 5/8" rebar and cap by LS OSHD, Sta. 37+92.5, 75.0 Left.
6. 5/8" Iron pin, 50' Left (bent).
7. 5/8" Iron pin Sta. 42+19.76, 50' Left (bent).
8. 5/8" rebar and cap by LS OSHD, Sta. 51+00, 75.0' Left.
9. 5/8" rebar and cap by LS OSHD, Sta. 54.50, 105.0' Left.
10. 5/8" rebar and cap by LS OSHD, Sta. 58+00, 75.0' Left.
11. 5/8" rebar and cap by LS 1106 per ROS No. 09-105-B (R20).
12. 3/4" Aluminum cap by C.O.E., Stamped AA-2014-1, RESET 1989.
13. 5/8" rebar and cap by LS OSHD, Sta. 66+05.44, 50' Left.
- 14-15. 5/8" rebar and cap by LS 1106 per ROS No. 09-105-B (R20).
16. 5/8" rebar and cap by LS 1106.
- 17-18. 5/8" rebar and cap by LS 1106 per ROS No. 09-105-B (R20).
- 19-21. 5/8" rebar and cap by Edwards 951, No. 01-166-B (P5).
22. 5/8" rebar and cap by Edwards 951, No. 01-166-B (P5).  
Y=823779.688 X=8504932.116
23. 5/8" rebar and cap by LS 2850, per ROS No. 99-49-B (R14).
24. 5/8" rebar and cap by LS 64248, ROS No. 11-107-B (R21), "Moe" property.  
Y=823544.044 X=8504275.681
25. 5/8" rebar and cap by LS 64248, ROS No. 11-107-B (R21), "Moe" property.  
Y=823861.507 X=8504271.698
26. 5/8" rebar and cap by LS 64248, ROS No. 11-107-B (R21), "Moe" property.  
Y=824192.747 X=8505586.087
27. 5/8" rebar and cap by LS 64248, ROS No. 11-107-B (R21), "Moe" property.  
Y=824453.621 X=8505582.655
- 28-29. 5/8" rebar and cap by LS 64248, ROS No. 11-107-B (R21), "Moe" property.
- 30-31. 5/8" rebar with 1" aluminum cap R/W monument (Oregon State Hwy Division)
32. 5/8" rebar and cap (cap unreadable).
33. 3/2" Bonneville Power Administration brass cap, BPA map S/N 53760.
- 34-35. 1/2" rebar by LS 2850.
36. 5/8" rebar and cap by LS 951 (R17).
37. 3/2" brass cap, 0.5' above ground.
38. 3/2" C.O.E. brass cap in concrete, south boundary McNary Sub, Stamped AA-2002-1, 1974.
39. 3/2" BPA brass cap.
40. East 497.00' Base Line Monument, 3/4" BPA aluminum cap in concrete.
41. 3/2" C.O.E. brass cap in concrete along north side R.R. tracks, Stamped AA-2002-1A 1974.
42. 3/2" C.O.E. brass cap in concrete along north side R.R. tracks, Stamped AA-2002-1B 1974.
43. 5/8" rebar and cap by LS 64248, east line of "Moe" property (R21).  
Y=824532.615 X=8505581.616
44. 5/8" rebar and cap by LS 64248, east line of "Moe" property (R21).  
Y=825003.238 X=8505575.270
45. 3/2" C.O.E. brass cap flush with paved road surface, Stamped AA-2002-2 - AA-2044, 1974.
46. 3/4" BPA aluminum cap, 0.3' below ground.
47. 3/2" brass cap, C.O.E. monument, north of control house parking area, stamped AA-2002-A 1974.
48. 3/2" BPA brass cap in concrete, 0.3' above ground, stamped EL-304.01.
49. 5/8" rebar and cap by LS 2627, mkd. "U.C.P.W.D." per ROS No. 01-86-C (R16).
50. R.R. spike at centerline of 3rd street by LS 2627 per ROS No. 01-86-C (R16).
- 51-52. 5/8" rebar and cap by LS 2627, mkd. "U.C.P.W.D." per ROS No. 01-86-C (R16).
53. R.R. spike at centerline of 3rd street by LS 2627 per ROS No. 01-86-C (R16).
54. 5/8" rebar and cap by LS 2627, mkd. "U.C.P.W.D." per ROS No. 01-86-C (R16).
55. 3/2" BPA brass cap, 0.25' above ground.
56. 3/2" BPA brass cap, 0.4' above ground (north of substation).
57. 3/2" C.O.E. brass cap, Stamped AA-2002-AA2001 1974.
58. 3/2" C.O.E. monument in concrete, Stamped AA-2001-1 1971.
59. 3/2" C.O.E. brass cap in concrete, north line McNary Project Boundary, map S/N 53760, Stamped AA-2001-A 1974.
60. 3/2" C.O.E. brass cap in concrete, north line McNary Project Boundary, map S/N 53760, Stamped AA-2000 1974.
61. 3/2" C.O.E. brass cap in concrete, north line McNary Project Boundary, map S/N 53760, Stamped AA-2000-A 1974.
62. Base Line Intersect, 3/2" BPA brass cap.
63. North 180.70' Base Line Monument, 3/4" BPA aluminum cap in concrete.



**DETAIL "A"**  
NTS



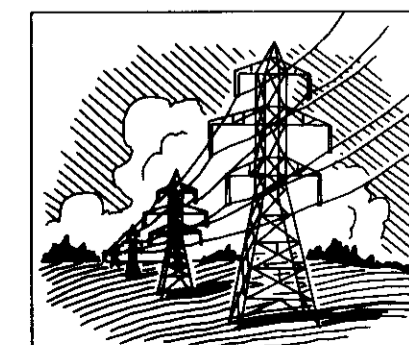
**DETAIL "B"**  
NTS

**ADJOINERS (MAP NO'S. SHOWN HEREON ARE THE UMATILLA COUNTY ASSESSOR'S MAP NO'S.)**

- 100. Map No. 5N2809-00-00100: USA-Bureau of Land Management.
- 200. Map No. 5N2809-00-00200: USA-Bureau of Land Management.
- 300. Map No. 5N2809-00-00300: Kenneth Munger and Janet Munger, husband and wife, Bk. 48, Pg. 573.
- 400. Map No. 5N28A0-00-00400: USA-Bureau of Land Management.
- 500. Map No. 5N2809-00-00500: Carl A. Arbogast and Karen K. Arbogast, husband and wife, Deed No. 1994-2641416.
- 600-A. Map No. 5N2809-00-00600: Windwave Technologies Inc., An Oregon Corporation, Deed No. 2009-5600418.
- 600-B. Map No. 5N2816-A0-00600: Duane O. Jenks and Vard B. Jenks, as Trustees of the Glade Legacy Trust, Deed No. 2011-5830793.
- 700. 5N2816-00-00700: Walter Wright and Carol D. Wright, Deed No. 1991-2360291
- 900. Map No. 5N2816-A0-00900: Kenneth Moon and Linda Moon, Deed No. 2007-5170518.
- 1100. 5N2816-00-01100: Walter Wright and Carol D. Wright, Deed No. 2006-5080538
- 1300. Map No. 5N2816-A0-01300: Laura L. Buck Nielson and Cephas S.D. Buck, Co-Trustees of Depietro Living Trust et al, Deed No. 2011-5800433.
- 1500. Map No. 5N2816-A0-01500: Laura L. Buck Nielson and Cephas S.D. Buck, Co-Trustees of Depietro Living Trust et al, Deed No. 2011-5800433.

**RECEIVED BY**  
Umatilla County Surveyor  
Date: 9/27/2013  
Rec'd By: [Signature]  
No.: 13-129-B

REGISTERED PROFESSIONAL LAND SURVEYOR  
[Signature]  
OREGON  
SEPTEMBER 25 2000  
RONALD M. HODGE  
64248  
03-19-13  
RENEWAL DATE: JUNE 30 2013



**McNary Substation**

COLUMBIA SURVEYS, PLLC  
303 Church Street  
Sandpoint, ID 83864  
1-877-563-2192

Scale: N/A  
Checked By: SLT  
Date: 2-11-13  
Drawn By: KLK/TRM  
Sheet: 5 of 5

**RECORD OF SURVEY**

FOR: BONNEVILLE POWER ADMINISTRATION

**McNary Substation**

IN THE S1/2 SECTION 9 & N1/2 SECTION 16  
TOWNSHIP 5 NORTH, RANGE 28 EAST,  
WILLAMETTE MERIDIAN,  
UMATILLA COUNTY, OREGON

**SURVEYOR'S NARRATIVE**

This survey was performed at the request of the Bonneville Power Administration (BPA) for the purpose of monumenting the boundaries of existing BPA Fee Parcels and Permanent Easement tracts that are a part of the McNary Switchyard & Powerhouse.

The existing monuments in Section 16 and Section 9 were surveyed with Static GPS Data and processed using the NGS Online Positioning User Service (OPUS), with redundant GPS Data ties to those positions. All of the existing monumentation disclosed by Public Record (BPA, U.S. Corps of Engineers, Umatilla County Roads, Oregon Department of Transportation, BLM/GLO and private survey data including Platted subdivisions and Recorded Surveys) was searched for and utilized, if possible, as a part of this Survey.

In Section 16, the found monumentation along the North-South Center of Section line at the intersection of the right-of-way of Highway No. 731 (Station 37+92.50) is in error by 6 ft. +/-, due to a BPA Center Quarter Corner used by the U.S. Corps of Engineers in the 1947 McNary Dam Project Boundary (see ROS No. 91-01-B, survey by G. Dennis Edwards, PLS No. 951). The BPA legal description for parcel No. MC-D-29 is also affected by this line.

The Meander Corner position between Sections 8 and 9 is based on U.S. Army Corps of Engineers ties to the 1943 GLO Survey of "An Island with Accretions in the Columbia River" by Norman D. Price. At that time the M.C. position was re-established by GLO along with two additional M.C.'s on the island to the North. The "1947" BPA survey of the McNary-Pasco line shows the M.C. on the north side of the island, which agrees with the Corps of Engineers Survey. The two southerly M.C. positions along that line now fall in the water. The present monumentation for this Record of Survey is calculated from the Corps of Engineers Coordinate position for the M.C. between Sections 8 and 9, and the M.C. position between Sections 9 and 10 which both show as corners found by the Corps of Engineers.

The East-West Section Subdivisional lines in the south half of Section 9 were not arrived at by weighted mean but are the result of existing monumentation by BPA. This monumentation appears to be the result of Section breakdown by "completion of the section", which was a valid method at the time the monuments were set.

**LEGEND**

- CALCULATED POINT, NOTHING SET
- FOUND MONUMENT (AS NOTED)
- ⊙ SET STANDARD 3/4" BPA ALUMINUM CAP ON 5/8" REBAR MARKED PLS 64248 OR AS NOTED
- ① CORNER MONUMENT (SEE SHEET 5)