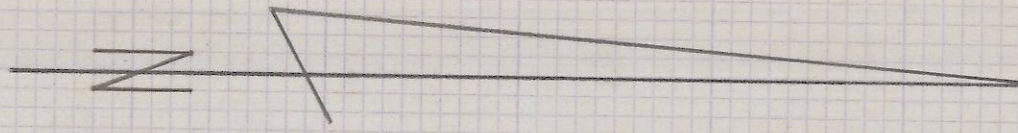
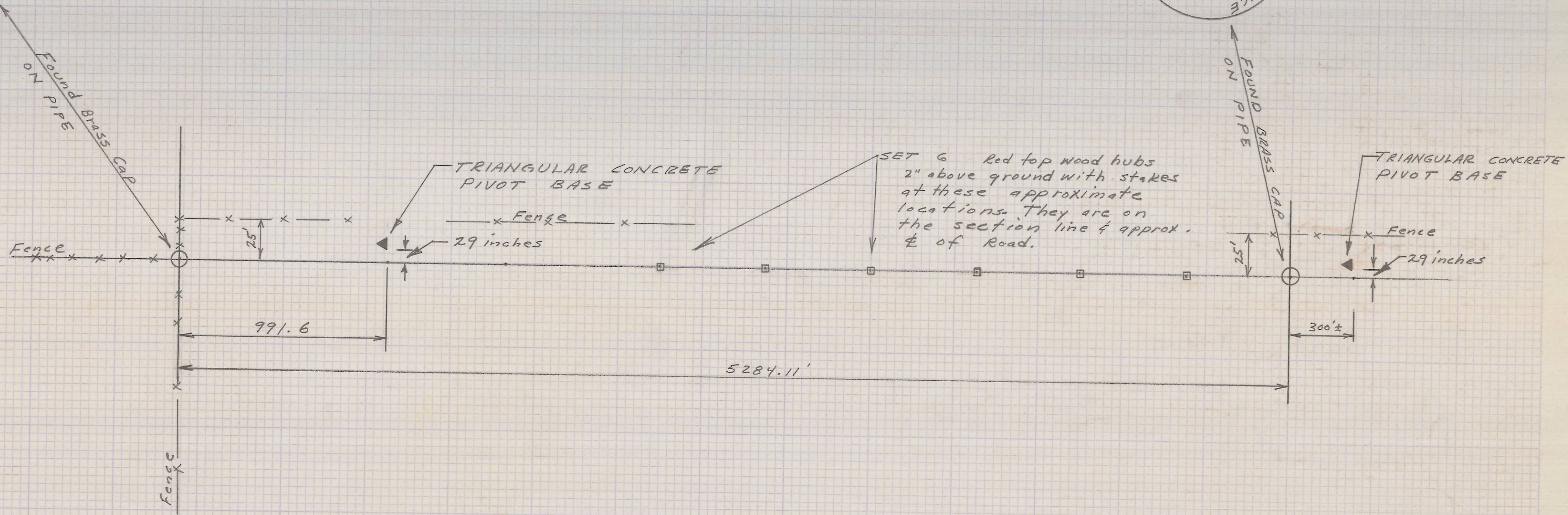


GENERAL LAND OFFICE
 1939
 R26
 S25 | S30
 S36 | S31



SCALE 1" = 400'
 DATE MAY 26, 1976

GENERAL LAND OFFICE
 1939
 R26
 S25 | S30
 S24 | S19



NOTE: There was no Property corner monuments set.

RECEIVED BY
 Umatilla County Surveyor
 Date: 5/30/2013
 Rec'd By: M.K.
 No.: 13-174-B



SECTION LINE STAKING
 FOR ROBERT O'ROURKE
 PENDLETON, OREGON

BY NORPA DEVELOPMENT, INC.
 P.O. Box 126
 HERMISTON, OREGON 97838
 PH. 567-3904

JO 76-035