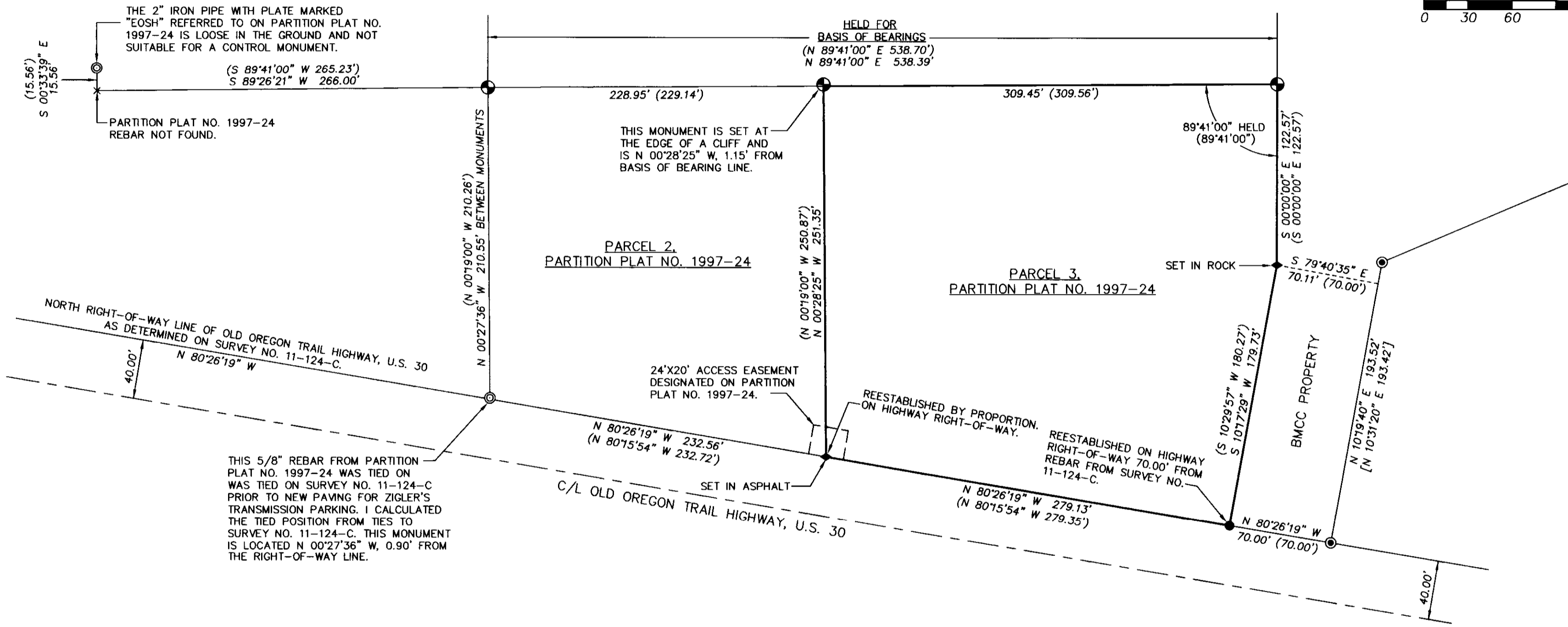
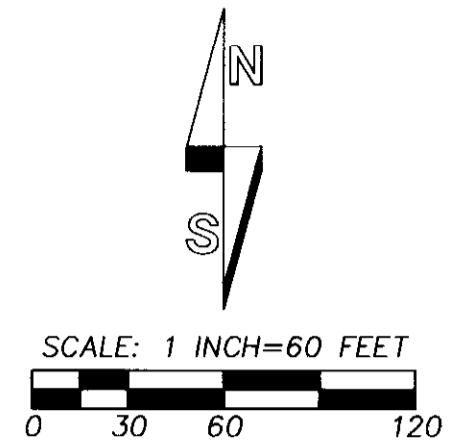


RECORD OF SURVEY



NARRATIVE

THE PURPOSE OF THIS SURVEY WAS TO RECOVER OR REESTABLISH THE CORNERS OF PARCEL 3 OF PARTITION PLAT NO. 1997-24. THE SURVEY WAS MADE AT THE REQUEST OF GARY JELLUM.

THE SOUTHWEST CORNER, SOUTHEAST CORNER AND THE ANGLE POINT IN THE EAST LINE OF PARCEL 3 HAVE BEEN DESTROYED BY GRADING OF THE PARCEL. I HELD A LINE BETWEEN THE RECOVERED NORTHWEST CORNER OF PARCEL 2 AND THE NORTHEAST CORNER OF PARCEL 3 OF SAID PARTITION AS THE BASIS OF BEARINGS AND CALCULATED POSITIONS FOR THE MISSING CORNERS AS SHOWN AND NOTED. NEW MONUMENTS AT THE SOUTHEAST AND SOUTHWEST CORNERS OF PARCEL 3 ARE SET ON THE HIGHWAY RIGHT-OF-WAY AS DETERMINED ON SURVEY NO. 11-124-C.

THE SURVEY WAS MADE BY ONE AND TWO PERSON CREWS USING A TRIMBLE GEODETIC GPS RECEIVER CONNECTED TO THE CITY OF PENDLETON'S CONTINUOUSLY OPERATING GPS NETWORK BASE. TIES TO CONTROLLING MONUMENTS AND NEW MONUMENTS SET WERE VERIFIED BY REDUNDANT OBSERVATIONS.

LEGEND

- ⊕ - FOUND 5/8" REBAR WITH 2" ALUM. CAP STAMPED "PLS 933" FROM PARTITION PLAT NO. 1997-24.
- - SET 5/8 BY 24" REBAR WITH 1 1/4" RED PLASTIC CAP MARKED "OR PLS 1106 WA PLS 17372".
- x - CALCULATED POINT ONLY, NOT SET OR FOUND.
- ⊙ - FOUND 5/8" REBAR WITH RED PLASTIC CAP MARKED "OR PLS 1106 WA PLS 17372" FROM SURVEY NO. 11-124-C.
- ⊗ - OTHER MONUMENT FOUND AS NOTED.
- ◆ - SET RAILROAD SPIKE WITH PUNCH MARK STAMPED "1106".
- (XOX) - INDICATES RECORD DIMENSION FROM PARTITION PLAT NO. 1997-24.
- [XOX] - INDICATES RECORD DIMENSION FROM SURVEY NO. 11-124-C.

RECEIVED BY
 Umatilla County Surveyor
 Date: 12/18/2013
 Rec'd By: [Signature]
 No.: 13-564-B

REGISTERED
 PROFESSIONAL
 LAND SURVEYOR

Will R. Wells

OREGON
 JULY 22, 1977
 WILLIAM R. WELLS
 1106
 RENEWS 6/30/14

WELLS SURVEYING
 1 SW NYE AVENUE, SUITE B
 P.O. BOX 1696
 PENDLETON, OR 97801
 PHONE: (541) 276-6362

DATE: 12/13	DR. BY: WRW
CK. BY: WRW	NO: 13-1468

PROJECT:
 SURVEY FOR:
 CLEAR CREEK CATTLE COMPANY
 PARCEL 3 OF
 PARTITION PLAT NO. 1997-24
 LOCATED IN THE SW1/4 OF SECTION 4
 AND NW1/4 OF SECTION 9,
 T2N., R32E., W.M.,
 CITY OF PENDLETON,
 UMATILLA COUNTY, OREGON.