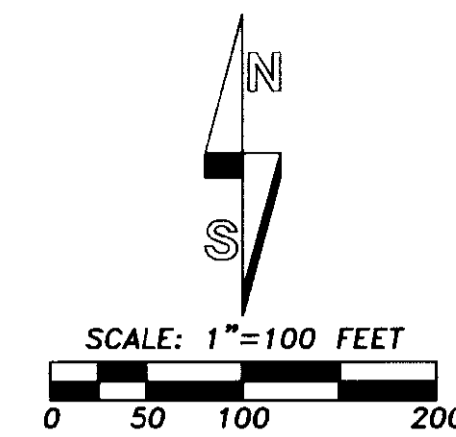
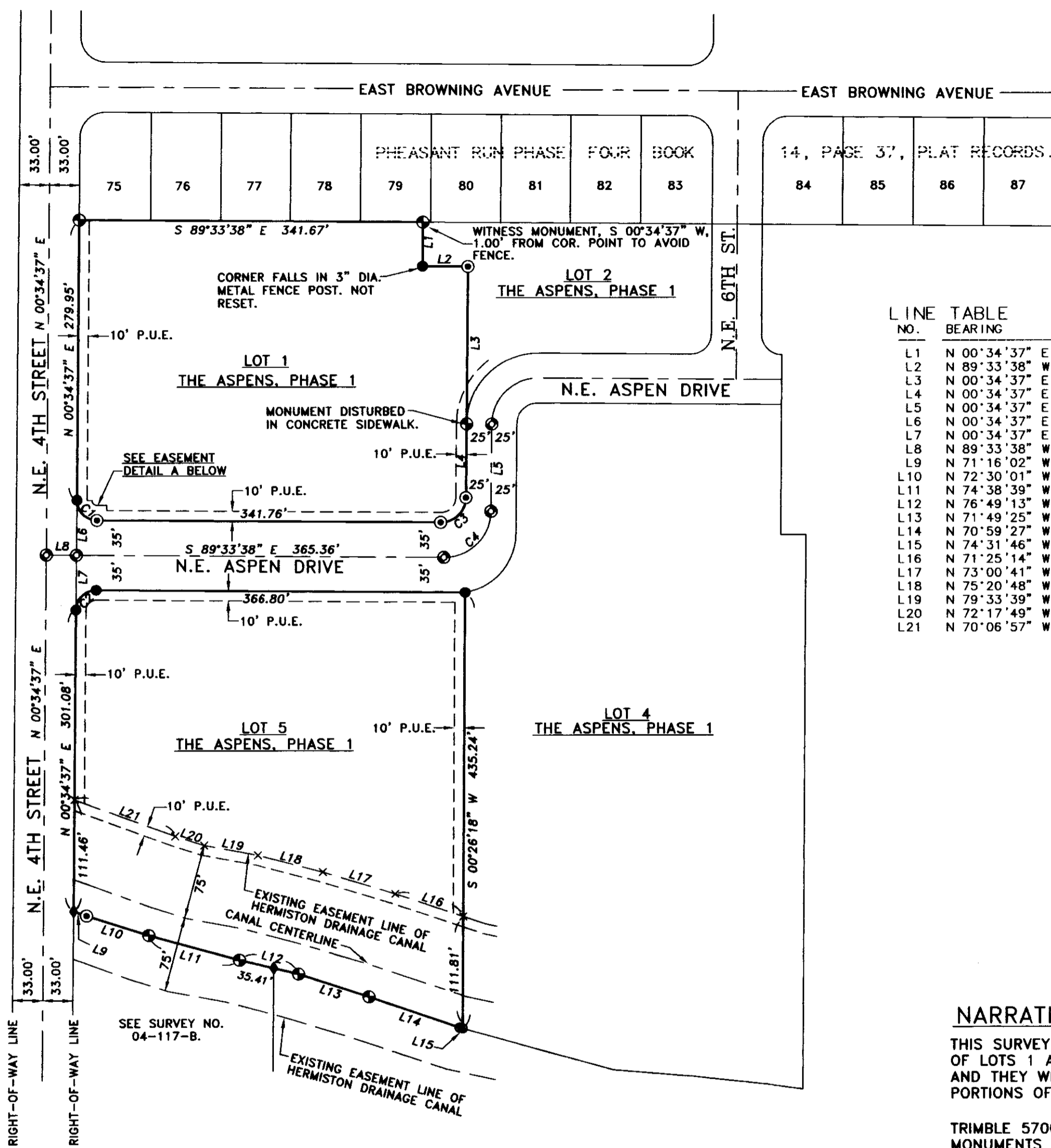


RECORD OF SURVEY

A SURVEY IN LOTS 1 AND LOT 5, OF THE ASPENS, PHASE 1 SUBDIVISION.
LOCATED IN THE SE1/4 OF THE SW1/4 OF SECTION 2, T4N., R28E., W.M.,
CITY OF HERMISTON, UMATILLA COUNTY, OREGON.



"BASIS OF BEARINGS": THE ASPENS, PHASE 1 SUBDIVISION. DIMENSIONS, AS MEASURED ON THIS SURVEY, ARE IDENTICAL WITH RECORD DIMENSIONS OF THE ASPENS, PHASE 1 PLAT.



LINE TABLE

NO.	BEARING	DISTANCE
L1	N 00°34'37\"	44.04'
L2	N 89°33'38\"	45.08'
L3	N 00°34'37\"	157.29'
L4	N 00°34'37\"	73.73'
L5	N 00°34'37\"	87.22'
L6	N 00°34'37\"	55.05'
L7	N 00°34'37\"	54.95'
L8	N 89°33'38\"	30.00'
L9	N 71°16'02\"	13.68'
L10	N 72°30'01\"	65.17'
L11	N 74°38'39\"	93.18'
L12	N 76°49'13\"	60.73'
L13	N 71°49'25\"	73.48'
L14	N 70°59'27\"	94.87'
L15	N 74°31'46\"	3.14'
L16	N 71°25'14\"	71.10'
L17	N 73°00'41\"	74.97'
L18	N 75°20'48\"	67.14'
L19	N 79°33'39\"	54.14'
L20	N 72°17'49\"	30.08'
L21	N 70°06'57\"	106.79'

CURVE TABLE

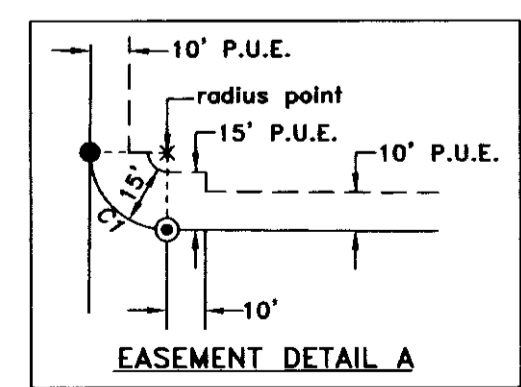
NO	DELTA	RADIUS	LENGTH	CHORD	CHORD BRG
C1	90°08'15\"	20.00'	31.46'	28.32'	S 44°29'31\"
C2	89°51'45\"	20.00'	31.37'	28.25'	N 45°30'29\"
C3	89°51'45\"	25.00'	39.21'	35.31'	N 45°30'29\"
C4	89°51'45\"	46.50'	72.93'	65.68'	N 45°30'29\"

- LEGEND**
- ◆ - FOUND 5/8" IRON REBAR WITH YELLOW PLASTIC CAP, PER SURVEY NO. 04-117-B.
 - × - INDICATES CALCULATED POINT ONLY, NOT SET OR FOUND.
 - ⊕ - FOUND 5/8" REBAR WITH 1 1/4" YELLOW PLASTIC CAP FROM THE ASPENS PHASE 1 PLAT.
 - ⊙ - FOUND 2" ALUM. CAP ON REBAR STREET MONUMENT FROM THE ASPENS PHASE 1 PLAT.
 - - SET LEAD PLUG MONUMENT. SCREWED A 3/4" BRASS WASHER STAMPED "PLS 1106" IN DRILLED HOLE FILLED WITH LEAD IN CONCRETE SIDEWALK FOR CORNER UNLESS OTHERWISE NOTED.
 - ⊙ - PLAT MONUMENT NOT FOUND. RESET A 5/8" X 24" IRON REBAR WITH 1 1/4" RED PLASTIC CAP MARKED "OR PLS 1106 WA PLS 17372."
 - P.U.E. - INDICATES PUBLIC UTILITY EASEMENT.

NARRATIVE

THIS SURVEY WAS MADE AT THE REQUEST OF JOHN SCHNELL, TO RECOVER OR RESET CORNER MONUMENTS ON THE BOUNDARIES OF LOTS 1 AND 5 OF THE ASPENS, PHASE 1 SUBDIVISION. SIDEWALK CONSTRUCTION DESTROYED CERTAIN ORIGINAL PLAT MONUMENTS AND THEY WERE RESET ON THIS SURVEY. IT SHOULD BE NOTED THAT IN THE AREAS WHERE THE LEAD PLUG MONUMENTS WERE SET PORTIONS OF THE SIDEWALK WERE BUILT INTO THE PUBLIC UTILITY EASEMENT.

TRIMBLE 5700 SERIES GEODETIC GPS RECEIVERS OPERATED IN REAL TIME KINEMATIC MODE WERE USED FOR CONTROL TIES AND MONUMENTS SETS.



RECEIVED BY
Umatilla County Surveyor
Date: 11/31/2014
Rec'd By: *Janet Roberts*
No.: 14-007-B

REGISTERED PROFESSIONAL LAND SURVEYOR
William R. Wells
OREGON
JULY 22, 1977
WILLIAM R. WELLS
1106
RENEWS 6/30/14

WELLS SURVEYING
1 SW NYE AVENUE, SUITE B
P.O. BOX 1696
PENDLETON, OR 97801
PHONE: (541) 276-6362
DATE: 01/14 DR. BY: JMW
CK. BY: WRW NO: 14-1472

PROJECT: \JOHNSCHNELLASPEN
BOUNDARY SURVEY FOR:
JOHN SCHNELL
LOCATED IN THE SE1/4 SW1/4 OF SECTION 2, T4N., R28E., W.M., CITY OF HERMISTON, UMATILLA COUNTY, OREGON.