

# BASIS OF BEARING

True Geodetic North at the corner common to Section 33 and 34, Township 1 South and Section 3 and 4, Township 2 South, Range 36 East of the Willamette Meridian, as determined by GPS observation (NAD-83 (1991) datum)

SCALE: 1"=500'

## LEGEND

- Found monument as noted, marked as per Umatilla County Monumentation Records
- ⊙ Set 2 1/2" x 30" Aluminum pipe with cap marked as per Umatilla County monumentation records, filed separately
- ( ) Record measurement as per GLO Field notes for Contract No. 452, executed by Herman Gradon, dated June 16, 1882
- [ ] Record measurement as per GLO Field notes for Contract No. 201, executed by John A. Hurlburt, dated August 5, 1873
- Set steel fencepost on line

## REFERENCE MATERIAL

Union County Monummentation Records  
Umatilla County Monumentation Records

Umatilla County Survey Number 12-144-B

GLO Field Notes for Contract No. 452, executed by Herman D. Gradon, dated June 16, 1882

GLO Field Notes for Contract No. 201, executed by John A. Hurlburt, dated August 5, 1873

### DEED REFERENCES

Reel 261 Page 1476  
Microfilm Document Number 2013-6120652

## NARRATIVE

This survey was done at the request of Patrick Marolla on behalf of Hancock Forest Management, land manager of the land within. Mr. Marolla wanted the ownership monumented and fenceposts set at certain areas on the property line. I recover the monuments as shown hereon and accept them as located. At the South quarter corner of Section 32, I find a steel fencepost in a collar of stone. A large Douglas Fir falls at the GLO record bearing and distance from this fencepost, however the tree has been chopped on with an ax and no scribe marks could be found. I find the location of this fencepost to be harmonious with the section corners to the East and West. I therefore accept this position and monument to county standard. At the West quarter corner position, I find no remains of the original GLO corner and place it by proportionate measurement. I find no other unusual conditions with this survey.

REGISTERED  
PROFESSIONAL  
LAND SURVEYOR

*Jeffrey S. Hsu*  
OREGON  
JUNE 2, 2010  
JEFFREY S. HSU  
83571

Renewal Date: June 30, 2017

## RECEIVED BY

Umatilla County Surveyor  
Date: 5/13/2015  
Rec'd By: *G. Hensley*  
No.: 15-036-B

**BAGETT, GRIFFITH & BLACKMAN**  
2006 Adams Avenue, LaGrande, Oregon  
Map of Survey

Situated in Section 32, Township 1 South,  
Range 36 East of the Willamette Meridian

UMATILLA COUNTY

SURVEYED FOR Hancock Forest Management

SURVEYED BY J. S. H.

Scale: 1" = 500' Drawn by: J. S. H. May 2015

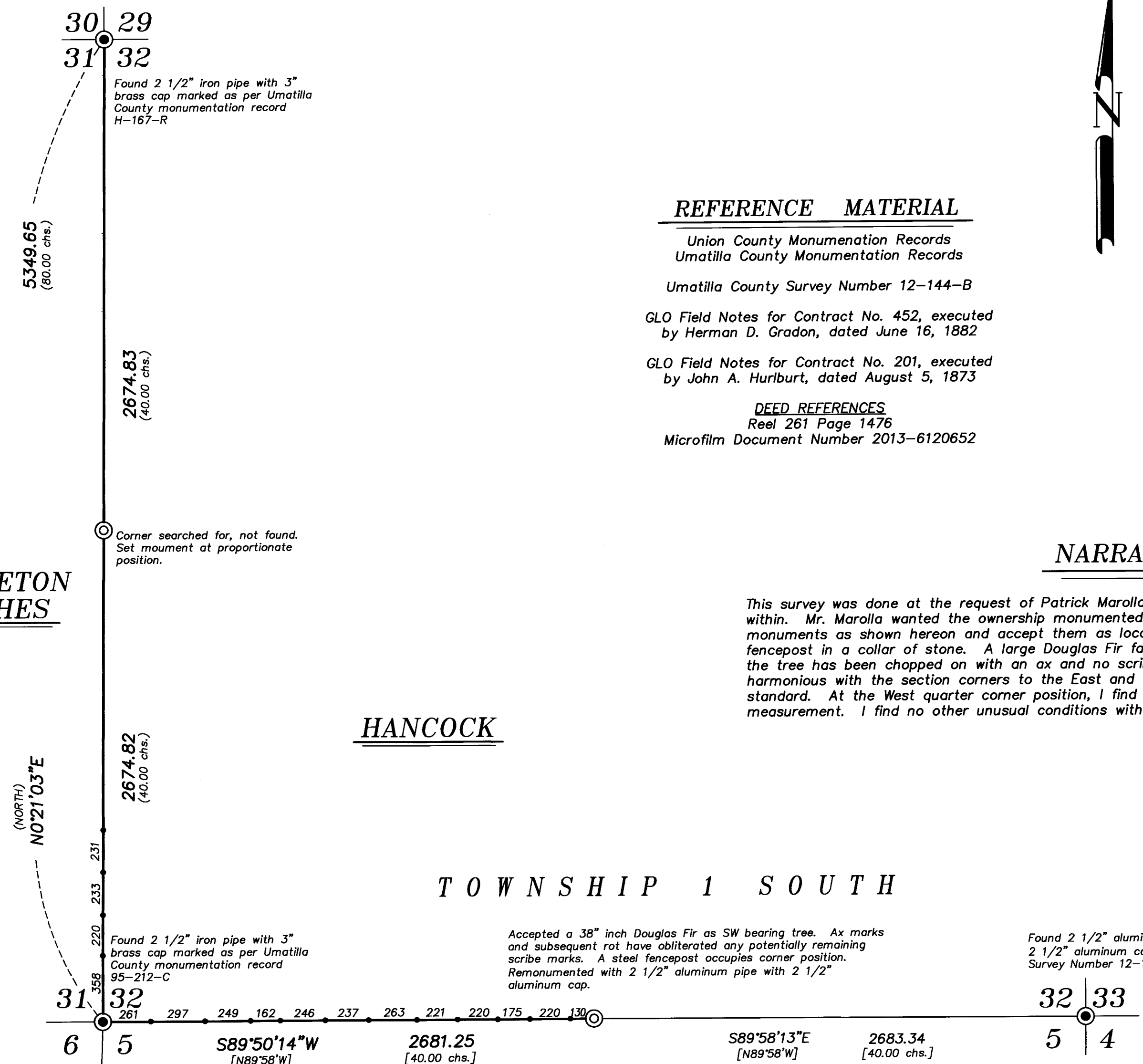
PENDLETON RANCHES

HANCOCK

TOWNSHIP 1 SOUTH

ALLEN

TOWNSHIP 2 SOUTH



Found 2 1/2" iron pipe with 3" brass cap marked as per Umatilla County monumentation record H-167-R

5349.65  
(80.00 chs.)

2674.83  
(40.00 chs.)

Corner searched for, not found. Set monument at proportionate position.

(NORTH)  
N0°21'03"E

2674.82  
(40.00 chs.)

Found 2 1/2" iron pipe with 3" brass cap marked as per Umatilla County monumentation record 95-212-C

Accepted a 38" inch Douglas Fir as SW bearing tree. Ax marks and subsequent rot have obliterated any potentially remaining scribe marks. A steel fencepost occupies corner position. Remonumented with 2 1/2" aluminum pipe with 2 1/2" aluminum cap.

Found 2 1/2" aluminum pipe with 2 1/2" aluminum cap, set by Survey Number 12-144-B

