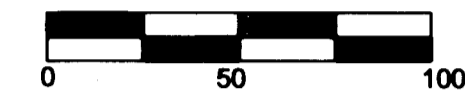


RECORD OF SURVEY

LOCATED IN THE SE 1/4 OF SECTION 10 AND THE
SW 1/4 OF SECTION 11 OF T. 2 N. R. 32 E.W.M.



Scale 1"=50'



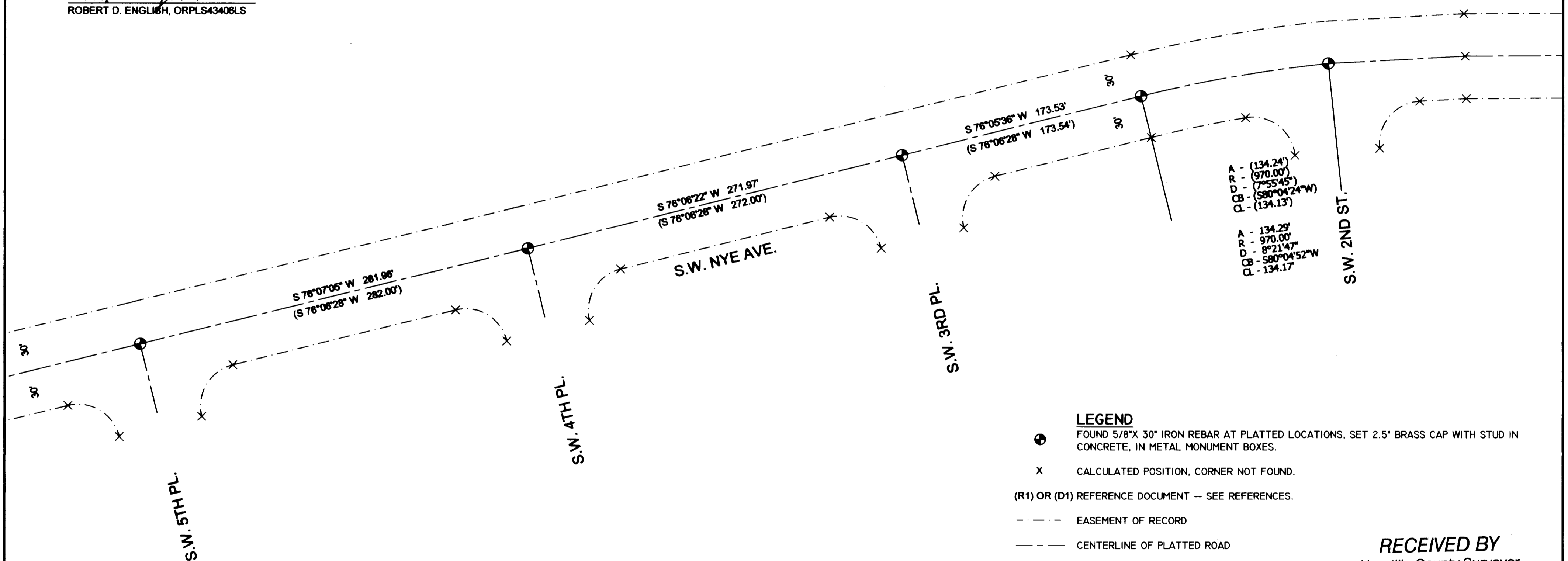
BASIS OF BEARING
WEST VIEW ADDITION PLAT

SURVEYOR'S NARRATIVE:

THIS SURVEY WAS PERFORMED AS PART OF A CONTRACT TO RESURFACE A PORTION OF S.W. NYE FROM S.W. 2ND TO S.W. 5TH STREETS. ALL MONUMENTS AT THE INTERSECTIONS OF S.W. 2ND, 3RD, 4TH, 5TH, AND THE POINT OF CURVATURE BETWEEN S.W. 2ND AND 3RD STREETS, WERE LOCATED AND REFERENCED WITH BOTH RTK GPS, AND A ROBOTIC TOTAL STATION. EXISTING MONUMENTS WERE WITHIN REASONABLE TOLERANCES OF RECORD DISTANCES FROM THE ORIGINAL PLAT, AND I COULDN'T JUSTIFY ANY ADJUSTMENT. THE ASPHALT SURFACE WAS GROUND OUT AND REPLACED. I THEN MARKED WHERE THE MONUMENT BOXES WERE TO BE SET AND PIONEER ASPHALT CORED AND SET METAL MONUMENT BOXES. I SET 2.5" BRASS CAPS WITH CONCRETE STUDS INTO GROUT MIX IN THE MONUMENT BOXES. THIS SURVEY WAS PERFORMED USING A SOKKIA GSR 2700IS RTK GPS SYSTEM, AND A TOPCON PS103 ROBOTIC TOTAL STATION. STANDARD ERROR FOR THE RTK SYSTEM IS 10.0MM + 1 PPM X BASELINE MEASURED, AND THE TOTAL STATION IS +/- (3+2PPM X DISTANCE) IN MILLIMETERS. I FIND NOTHING OUT OF THE ORDINARY ON THIS SURVEY.

Robert D. English

ROBERT D. ENGLISH, ORPLS43406LS



A - (134.24)
R - (970.00)
D - (755'45")
CB - (S80°04'24"W)
CL - (134.13')

A - 134.29'
R - 970.00'
D - 8°21'47"
CB - S80°04'52"W
CL - 134.17'

LEGEND

- FOUND 5/8"X 30" IRON REBAR AT PLATTED LOCATIONS, SET 2.5" BRASS CAP WITH STUD IN CONCRETE, IN METAL MONUMENT BOXES.
- X CALCULATED POSITION, CORNER NOT FOUND.
- (R1) OR (D1) REFERENCE DOCUMENT -- SEE REFERENCES.
- EASEMENT OF RECORD
- CENTERLINE OF PLATTED ROAD

RECEIVED BY

Umatilla County Surveyor
Date: 12/28/16
Rec'd By: CT
No.: 16-113-8

REFERENCES: (NOTE: UCSR = UMATILLA COUNTY SURVEY RECORD)
(R1) PLAT BOOK 11, PAGE 28, WEST SLOPE PARK ADDITION

REGISTERED
PROFESSIONAL
LAND SURVEYOR

Robert D. English
OREGON
JANUARY 11, 2005
ROBERT DOUGLAS ENGLISH
43406LS

RENEWAL DATE: 12/31/17

DATE:
12/15/16

SCALE:
1"=50'

JOB NO.
2016-027

DWG NO.
SW NYE AVE ROS.DWG

DWN. BY:
ELK/RDE

CHK. BY:
RDE

REV. DATE:
00/00/16

RECORD OF SURVEY FOR:
CITY OF PENDLETON

500 S.W. DORION
PENDLETON, OR 97801

SURVEY ONE, LLC.

P.O. BOX 382
PENDLETON OR, 97801
Ph: 541-276-2055 Fax: 541-276-3480