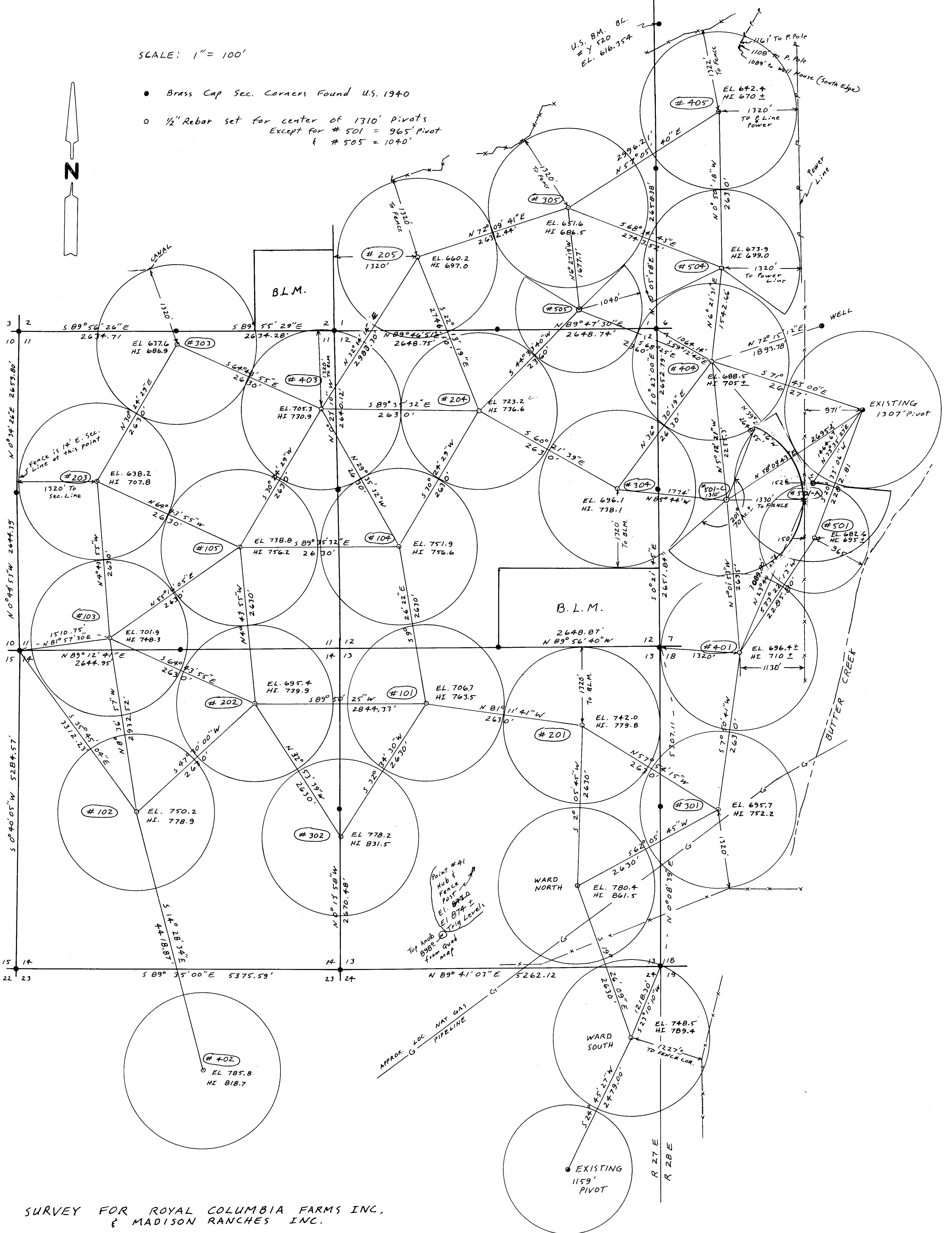


SCALE: 1" = 100'



- Brass Cap Sec. Corners Found U.S. 1940
- 1/2" Rebar set for center of 1310' Pivots  
Except for # 501 = 965' Pivot  
& # 505 = 1040'



SURVEY FOR ROYAL COLUMBIA FARMS INC.  
& MADISON RANCHES INC.

IN T3N, R27E & R28E, W.M. UMATILLA  
COUNTY, OREGON

2/22/90 Rev. 2/24/90 JOB # 59001001

EDWARDS SURVEYING P.O. BOX 763  
567-3336 HERMISTON, OREGON

NOTE: Elevations are shot with E.M.D. slope shots &  
are probably only accurate to ± 2 feet. We did check  
a high point just south of point #41 in sec. 13 &  
checked our elevation from the B.M. in Sec. 6 by 1.6 feet.

*Denny Edwards*

RECEIVED BY  
Umatilla County Surveyor  
Date: 2/8/17  
Rec'd By: CT  
No.: 17-027-B