

# RECORD OF SURVEY

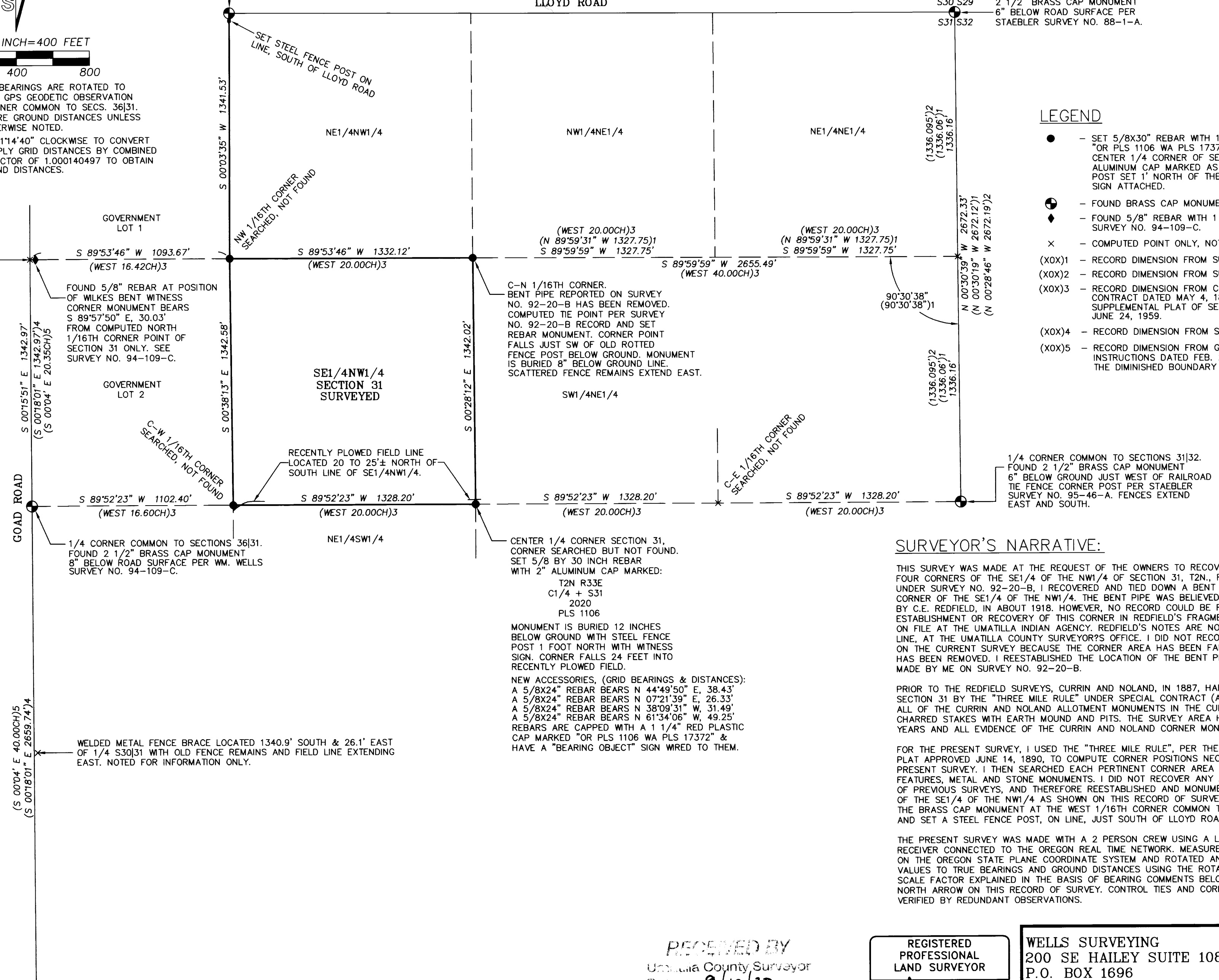


SCALE: 1 INCH=400 FEET  
 0 200 400 800

BASIS OF BEARINGS: BEARINGS ARE ROTATED TO TRUE NORTH BASED ON GPS GEODETIC OBSERVATION TAKEN AT THE 1/4 CORNER COMMON TO SECS. 36|31. MEASURED DISTANCES ARE GROUND DISTANCES UNLESS OTHERWISE NOTED.  
 ROTATE GRID BEARINGS 01°14'40" CLOCKWISE TO CONVERT TO TRUE BEARINGS. MULTIPLY GRID DISTANCES BY COMBINED SCALE AND ELEVATION FACTOR OF 1.000140497 TO OBTAIN GROUND DISTANCES.

W1/16TH S30  
 31  
 FOUND 3" BLM BRASS CAP IN MONUMENT CASE ON NORTH EDGE OF LLOYD ROAD PER BLM DEPENDENT RESURVEY IN 1988. SET A STEEL FENCE POST ON SOUTH SIDE OF LLOYD ROAD, S 00°03'35" W, 29.2' FROM CORNER MONUMENT.

SECTION CORNER.  
 2 1/2" BRASS CAP MONUMENT  
 6" BELOW ROAD SURFACE PER  
 STAEBLER SURVEY NO. 88-1-A.



### LEGEND

- - SET 5/8X30" REBAR WITH 1 1/4" RED PLASTIC CAP MARKED "OR PLS 1106 WA PLS 17372". THE REBAR MONUMENT AT THE CENTER 1/4 CORNER OF SECTION 31 IS CAPPED WITH A 2" ALUMINUM CAP MARKED AS SHOWN. THERE IS A STEEL FENCE POST SET 1' NORTH OF THE REBAR MONUMENTS WITH "WITNESS" SIGN ATTACHED.
- ⊙ - FOUND BRASS CAP MONUMENT OF RECORD, AS NOTED.
- ◆ - FOUND 5/8" REBAR WITH 1 1/4" YELLOW PLASTIC CAP FROM SURVEY NO. 94-109-C.
- × - COMPUTED POINT ONLY, NOT SET OR FOUND.
- (XOX)1 - RECORD DIMENSION FROM SURVEY NO. 92-20-B BY WM. WELLS, IN 1992.
- (XOX)2 - RECORD DIMENSION FROM SURVEY NO. 95-46-A BY DON STAEBLER, IN 1995.
- (XOX)3 - RECORD DIMENSION FROM CURRIN & NOLAND SURVEY UNDER SPECIAL CONTRACT DATED MAY 4, 1887, (PLAT APPROVED JUNE 14, 1890) & SUPPLEMENTAL PLAT OF SECTION 31, T2N., R33E., W.M. APPROVED JUNE 24, 1959.
- (XOX)4 - RECORD DIMENSION FROM SURVEY NO. 94-109-C BY WM. WELLS, IN 1994.
- (XOX)5 - RECORD DIMENSION FROM GLO SURVEY BY L.E. WILKES, UNDER SPECIAL INSTRUCTIONS DATED FEB. 20, 1917. THIS SURVEY WAS OF PORTIONS OF THE DIMINISHED BOUNDARY OF THE UMATILLA INDIAN RESERVATION.

### SURVEYOR'S NARRATIVE:

THIS SURVEY WAS MADE AT THE REQUEST OF THE OWNERS TO RECOVER OR REMONUMENT THE FOUR CORNERS OF THE SE1/4 OF THE NW1/4 OF SECTION 31, T2N., R33E., W.M. IN 1992, UNDER SURVEY NO. 92-20-B. I RECOVERED AND TIED DOWN A BENT PIPE AT THE NORTHEAST CORNER OF THE SE1/4 OF THE NW1/4. THE BENT PIPE WAS BELIEVED TO BE FROM A SURVEY BY C.E. REDFIELD, IN ABOUT 1918. HOWEVER, NO RECORD COULD BE FOUND FOR ESTABLISHMENT OR RECOVERY OF THIS CORNER IN REDFIELD'S FRAGMENTARY SURVEY NOTES ON FILE AT THE UMATILLA INDIAN AGENCY. REDFIELD'S NOTES ARE NOW AVAILABLE, ON-LINE, AT THE UMATILLA COUNTY SURVEYOR'S OFFICE. I DID NOT RECOVER THIS BENT PIPE ON THE CURRENT SURVEY BECAUSE THE CORNER AREA HAS BEEN FARMED AND THE BENT PIPE HAS BEEN REMOVED. I REESTABLISHED THE LOCATION OF THE BENT PIPE CORNER PER TIES MADE BY ME ON SURVEY NO. 92-20-B.

PRIOR TO THE REDFIELD SURVEYS, CURRIN AND NOLAND, IN 1887, HAD SUBDIVIDED SECTION 31 BY THE "THREE MILE RULE" UNDER SPECIAL CONTRACT (ALLOTMENT CORNERS). ALL OF THE CURRIN AND NOLAND ALLOTMENT MONUMENTS IN THE CURRENT SURVEY AREA WERE CHARRED STAKES WITH EARTH MOUND AND PITS. THE SURVEY AREA HAS BEEN FARMED FOR YEARS AND ALL EVIDENCE OF THE CURRIN AND NOLAND CORNER MONUMENTS IS LOST.

FOR THE PRESENT SURVEY, I USED THE "THREE MILE RULE", PER THE CURRIN AND NOLAND PLAT APPROVED JUNE 14, 1890, TO COMPUTE CORNER POSITIONS NECESSARY FOR THE PRESENT SURVEY. I THEN SEARCHED EACH PERTINENT CORNER AREA FOR POSSESSORY FEATURES, METAL AND STONE MONUMENTS. I DID NOT RECOVER ANY ACCEPTABLE EVIDENCE OF PREVIOUS SURVEYS, AND THEREFORE REESTABLISHED AND MONUMENTED THE FOUR CORNERS OF THE SE1/4 OF THE NW1/4 AS SHOWN ON THIS RECORD OF SURVEY. I ALSO RECOVERED THE BRASS CAP MONUMENT AT THE WEST 1/16TH CORNER COMMON TO SECTIONS 30 AND 31 AND SET A STEEL FENCE POST, ON LINE, JUST SOUTH OF LLOYD ROAD.

THE PRESENT SURVEY WAS MADE WITH A 2 PERSON CREW USING A LEICA GEODETIC GPS RECEIVER CONNECTED TO THE OREGON REAL TIME NETWORK. MEASUREMENTS WERE GATHERED ON THE OREGON STATE PLANE COORDINATE SYSTEM AND ROTATED AND SCALED FROM GRID VALUES TO TRUE BEARINGS AND GROUND DISTANCES USING THE ROTATION AND COMBINED SCALE FACTOR EXPLAINED IN THE BASIS OF BEARING COMMENTS BELOW THE SCALE AND NORTH ARROW ON THIS RECORD OF SURVEY. CONTROL TIES AND CORNER MONUMENTS SET WERE VERIFIED BY REDUNDANT OBSERVATIONS.

RECEIVED BY  
 Umatilla County Surveyor  
 Date: 9/10/20  
 Filed By: CT  
 No. 20-076-B

REGISTERED  
 PROFESSIONAL  
 LAND SURVEYOR

WILLIAM R. WELLS  
 OREGON  
 JULY 22, 1977  
 WILLIAM R. WELLS  
 1106  
 RENEWS 6/30/22

WELLS SURVEYING  
 200 SE HAILEY SUITE 108  
 P.O. BOX 1696  
 PENDLETON, OR 97801  
 PHONE: (541) 276-6362

DATE: 08/20	DR. BY: WRW
CK. BY: WRW	NO: 20-1762

PROJECT: \LORIHROT  
 SURVEY FOR:  
 ROBIN M. SKILLMAN  
 JESS W. McCOY &  
 LORI I. McCOY-HARRISON

SITUATED IN THE NW1/4 OF SECTION 31,  
 TOWNSHIP 2 NORTH RANGE 33 EAST, W.M.  
 UMATILLA COUNTY, OREGON.

S36 S31 SECTION CORNER.  
 WILKES 2 1/2" BRASS CAP MONUMENT PER  
 S1 S6 PER 1917 SURVEY. NOT VISITED ON THIS SURVEY.