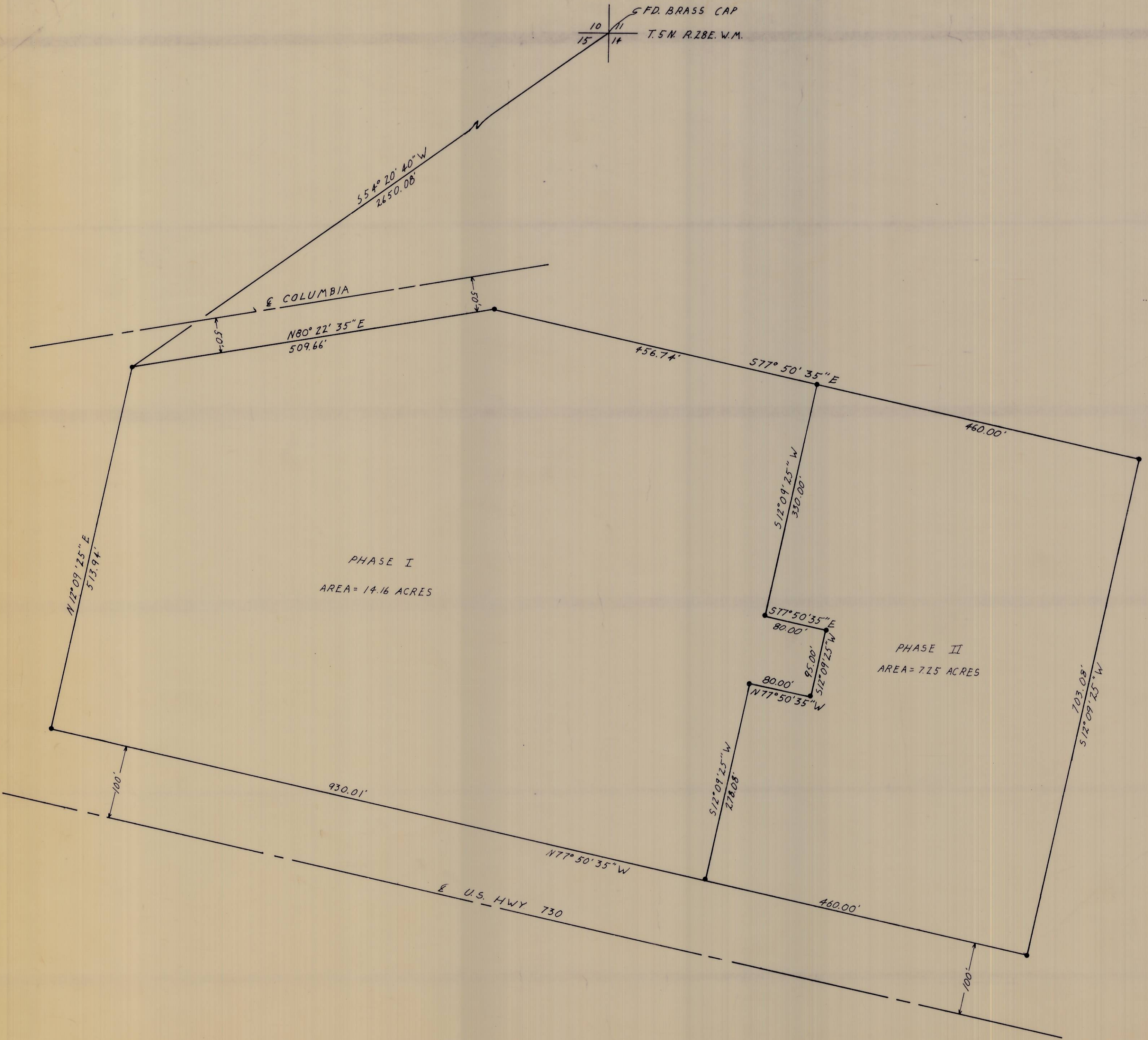


5 F.D. BRASS CAP  
 10 11  
 15 16 T.5N. R.28E. W.M.



NOTE: BEARINGS ARE BASED UPON TIES TO M.O.S. STATION "VACA" THOES SHOWN ARE TRUE.

REGISTERED PROFESSIONAL LAND SURVEYOR  
 David H. Kubei  
 DAVID H. KUBBEIN  
 933

• SET 5/8" IRON PIN

SURVEY OF		WAYNE HARRIS CO. INC.			
MGNARY MOBILE MANOR		ENGINEERS - SURVEYORS PENDLETON, OREGON			
SCALE	DATE	DRN. BY	GKD. BY	DRNG. NO.	
1" = 100'	12-13-73	D.S.	D.H.K.	73-385C	

I-12-B