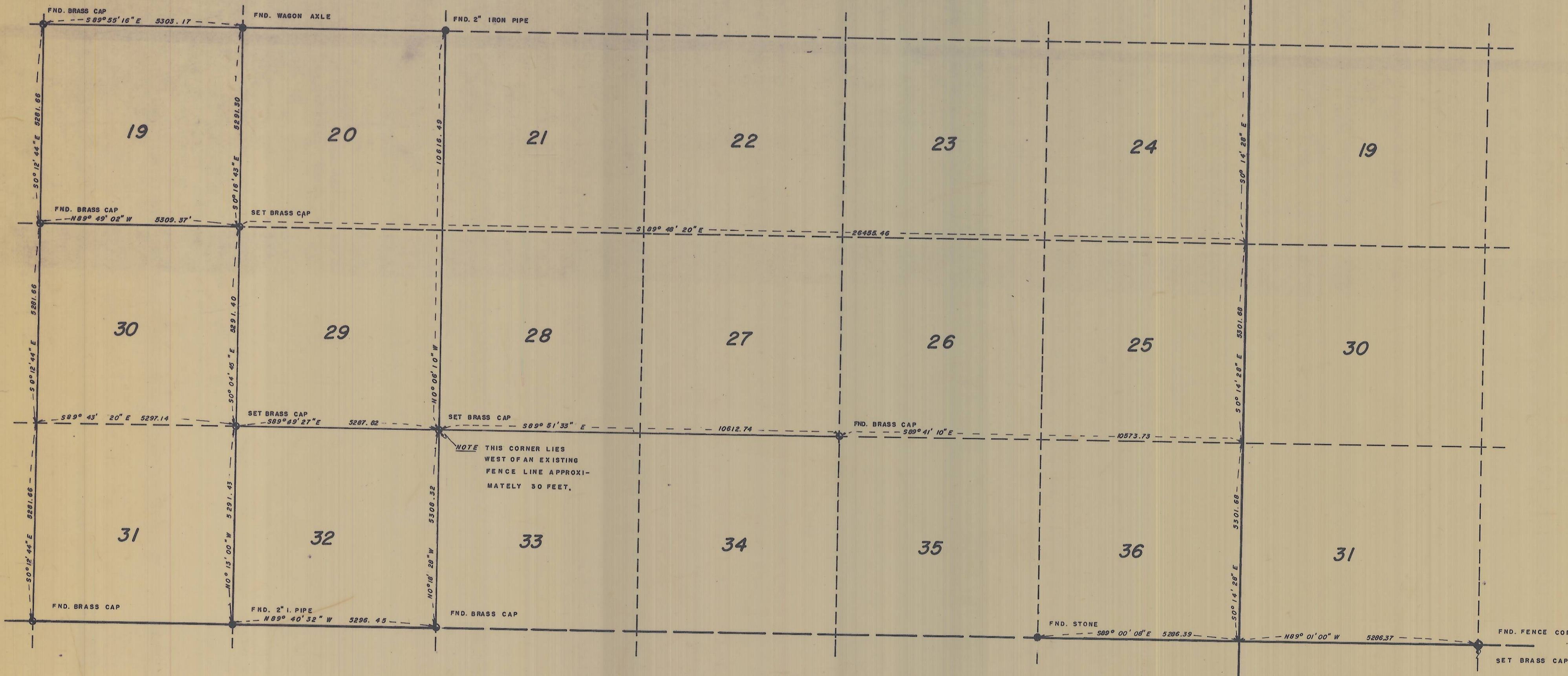


T. 5 N. R. 30 E. W. M.

T. 5 N. R. 31 E. W. M.



NOTE THIS CORNER LIES WEST OF AN EXISTING FENCE LINE APPROXIMATELY 30 FEET.

NOTE:
 BEARINGS BASED UPON TIES TO N.G.S. STATIONS "HERMISTON BUTTE" AND "JUNIPER." THOSE SHOWN ARE TRUE.



REGISTERED PROFESSIONAL LAND SURVEYOR

David H. Krumbein

OREGON
 JULY 17, 1923
 DAVID H. KRUMBEIN
 933

SURVEY IN SEC. 32, T. 5 N. R. 30 E. W. M. FOR
 ROGERS SURVEYING
 UMATILLA COUNTY, OREGON

WAYNE HARRIS CO. INC. 2467-B
 ENGINEERS-SURVEYORS PENDLETON, OREGON

SCALE	1" = 2000'	DRN. BY	DES	DRNG. NO.
DATE	6-5-74	GKD. BY	DHK	74-404C