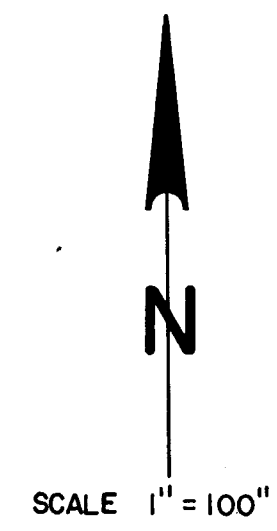


DESCRIPTION: LOTS 1-8 INCLUSIVE AND LOTS 11-18 INCLUSIVE OF BLOCK 17 OF CHARLES TRACTS AS SHOWN ON THE FIRST AMENDED AND SUPPLEMENTAL PLAT THEREOF ON FILE IN THE COUNTY RECORDERS OFFICE. SEC. 27, T.5 N, R.28 E, W.M., UMATILLA COUNTY.

REGISTERED PROFESSIONAL LAND SURVEYOR
J. Dennis Edwards
 OREGON JULY 16, 1971
 G. DENNIS EDWARDS 951

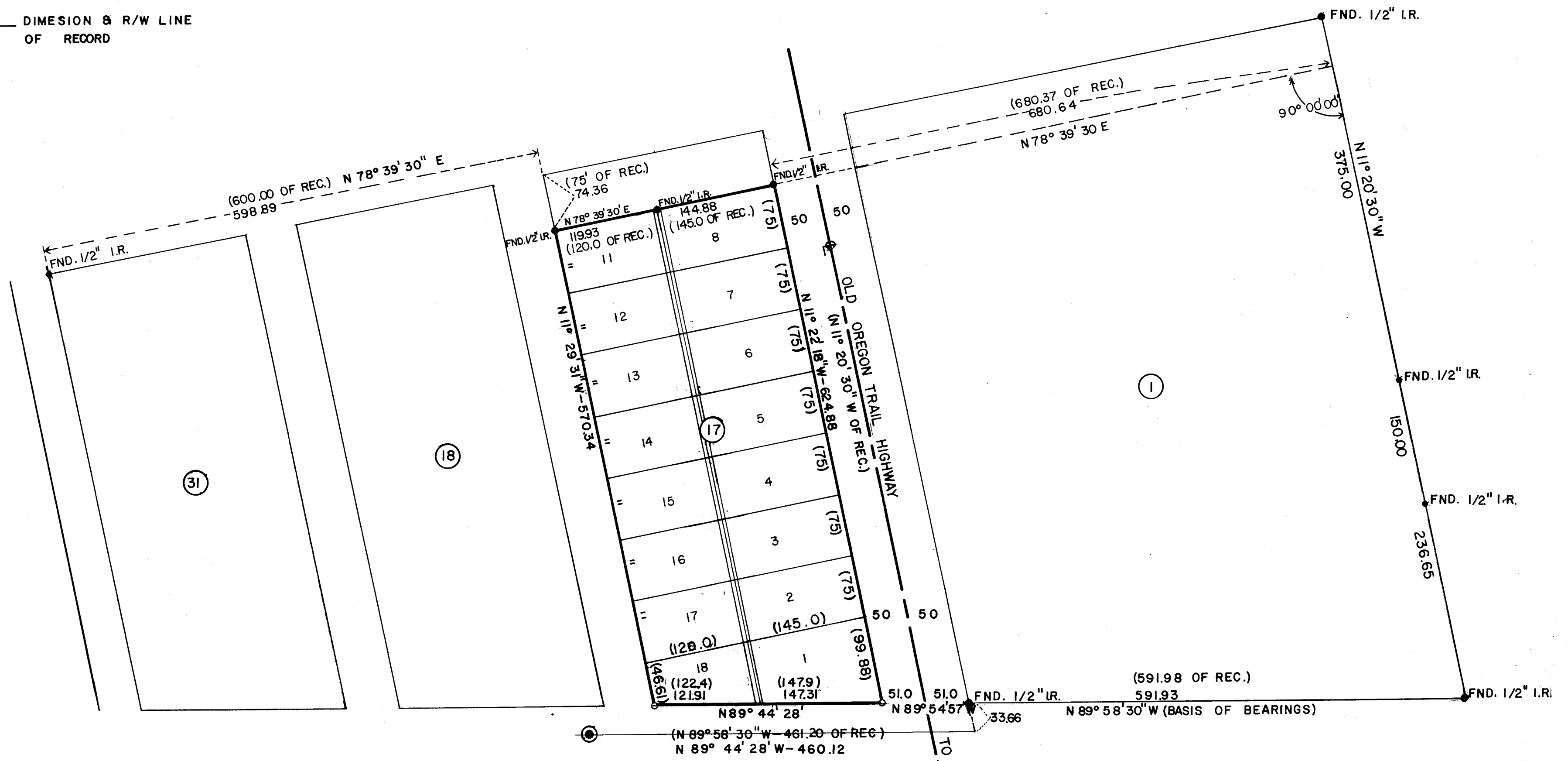


CERTIFICATION

I, G. DENNIS EDWARDS A REGISTERED PROFESSIONAL LAND SURVEYOR HEREBY CERTIFY THAT ON 9/15/75 A SURVEY WAS STARTED AND COMPLETED ON 9/16/75 OF THE LANDS SHOWN HEREON BY ME OR UNDER MY DIRECTION THAT THE PROPERTY CORNERS ARE MARKED AS SHOWN, AND THAT THIS MAP IS A TRUE AND ACCURATE REPRESENTATION OF SAID SURVEY.

LEGEND

- o SET 1/2" I.R.
- FOUND 1/2" I.R.
- PROPERTY LINE
- CENTER LINE
- DIMENSION & R/W LINE OF RECORD



FND. STONE MONUMENT, 7" X 7" X 24" WITH A CROSS IN CENTER OF STONE, RECORDED ON THE FIRST AMENDED AND SUPPLEMENTAL PLAT OF CHARLES TRACTS AS INITIAL POINT OF PLAT.

J-044-B

SURVEY FOR KNAPP MOBIL HOME DISCOUNT		
GASCHLER & ASSOCIATES		
ONTARIO, OREGON HERMISTON, OREGON		
DESIGNED BY:	DRAWN BY: <i>J.K.</i>	APPROVED BY: <i>[Signature]</i>
DATE: 9/18/75	DRAWING NO. B-9	BK PG
SHEET 1 OF 1	JOB NO. HSO-1175	REVISED: