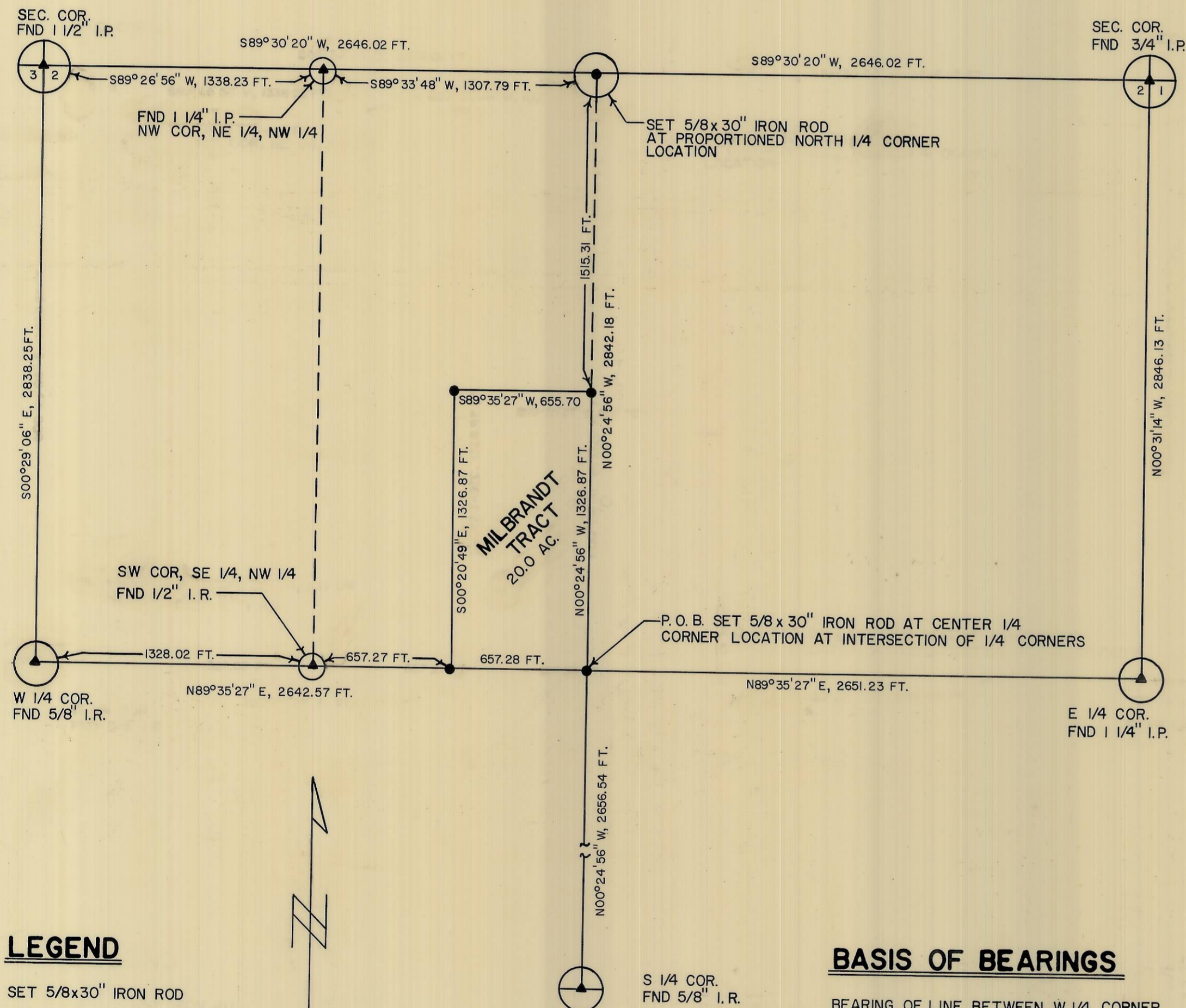


RECORD OF SURVEY

OF THE RDELL MILBRANDT TRACT

LOCATED IN SECTION 2, T4N, R28E, W. M.



DESCRIPTION

E 1/2 OF SE 1/4 OF NW 1/4 OF SECTION 2,
T4N, R28E, W.M.

REFERENCES

- EBENEZER E. HAFT SURVEY CONTRACT NO. 93, TOWNSHIP SURVEY SEPT. 11, 1860.
- THIRD SUPPLEMENTAL PLAT OF SECTION 2, T4N, R28E. U.S. SURVEYOR GENERALS OFFICE PORTLAND, OREGON. JULY 10, 1922.
- DONALD STAEBLER SURVEY OF SECTION 2, T4N, R28E, W.M. DEC. 1975.
- GASHLER & ASSOCIATES SURVEY OF A TRACT IN THE SW 1/4 OF NW 1/4 OF SECTION 2, T4N, R28E, W.M. DEC. 1975.

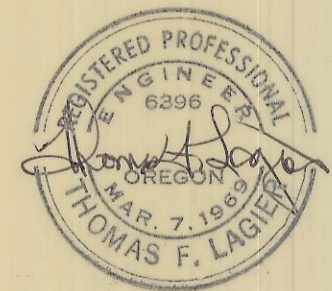
LEGEND

- SET 5/8x30" IRON ROD
- ▲ FOUND MONUMENT OF RECORD

BASIS OF BEARINGS

BEARING OF LINE BETWEEN W 1/4 CORNER AND E 1/4 CORNER DEFINED AS N89°35'27" E BY REFERENCED SURVEY.

SCALE 1"=500'



L-18-8

RECORD OF SURVEY

DATE
JULY 19, 1976

TELEK ENGINEERING
540 SW. 11TH
HERMISTON, ORE.