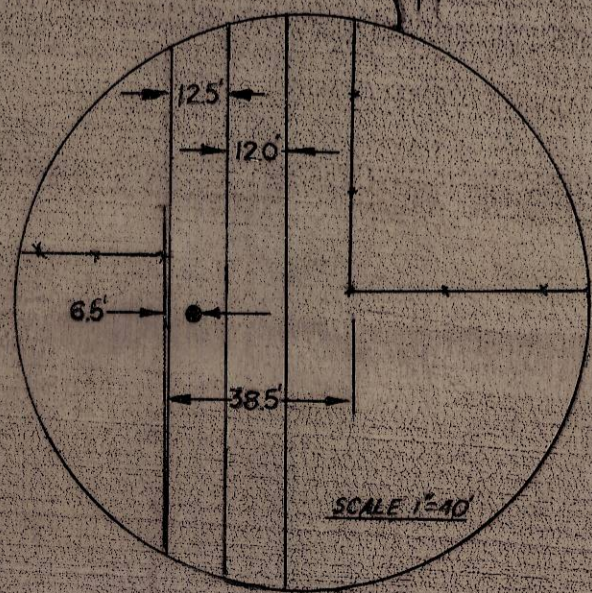
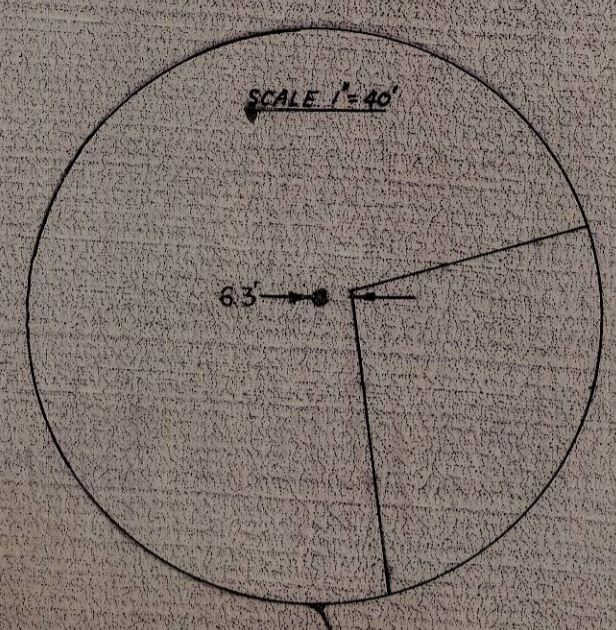


CENTER SEC. 1 COMPUTED FROM PLAT CALLS AND TIE'S TO M1 HEBRON & M1 HEBRON 2nd.

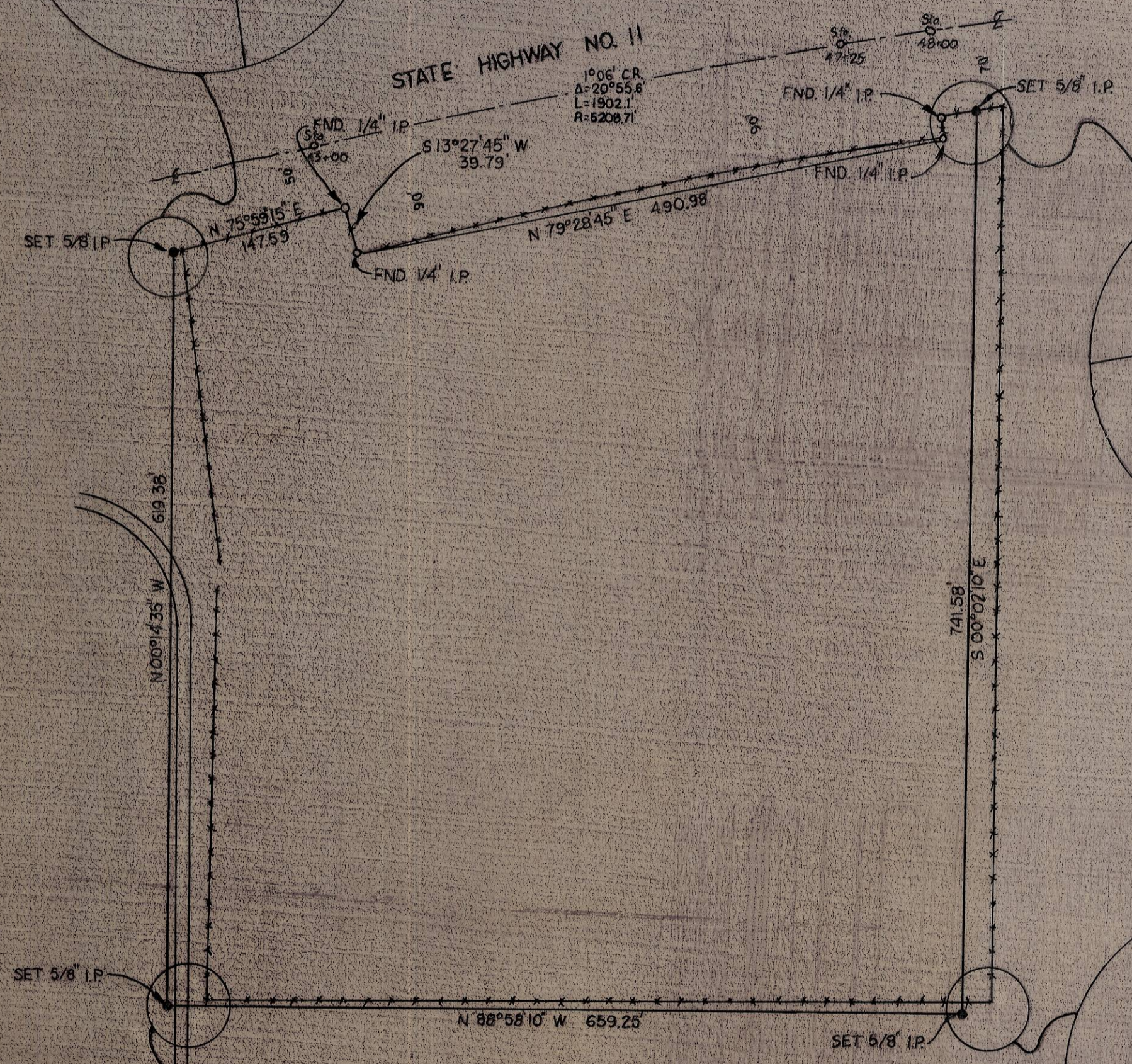
COMPUTED FROM PLAT CALLS AND TIE'S TO OSCAR SCHULTZ TRACTS.

SCALE 1"=500'

NOTE:
BEARINGS AND DISTANCES SHOWN ARE TRUE, BASED UPON TIE'S TO N.G.S. STA. PENDLETON AND MISSION.



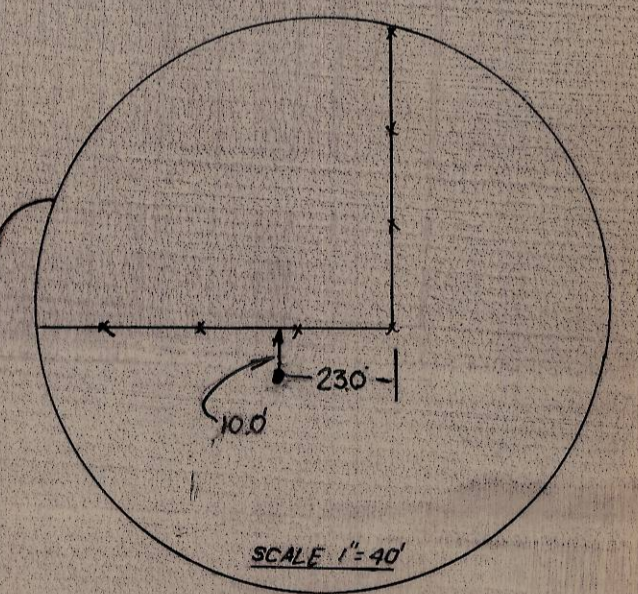
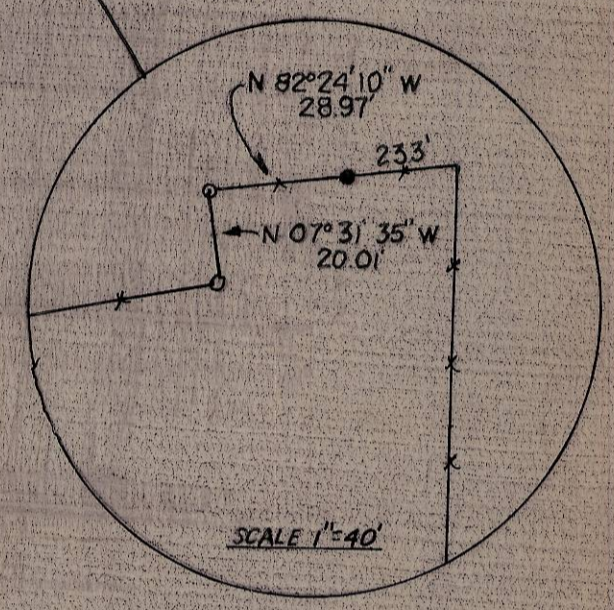
STATE HIGHWAY NO. 11



106' CR
Δ=20°55.6
L=1902.1
R=6208.71

SCALE 1"=100'

NOTE:
BEARINGS AND DISTANCES ON THE SOUTH R/W OF HWY 11 ARE CHORD BEARINGS AND DISTANCES.



REGISTERED PROFESSIONAL LAND SURVEYOR
David H. Krumbein
DAVID H. KRUMBEIN
1935

KRUMBEIN ENGINEERING CO.
ENGINEERS - SURVEYORS - PLANNERS
216 S.E. 1st, Pendleton, Oregon
SURVEY FOR GALE MARSHALL
E 1/2, NE 1/4, SE 1/4, SOUTH OF OREGON STATE HWY 11 SOUTH R/W LINE, SECTION 1, T2N, R32E, WM

SCALE AS SHOWN
DATE 8-12-76
DRN. BY W.J.R.
CKD. BY
DRAWING NO. 78-48C