

MERIDIAN BY SOLAR OBSERVATION

TRANSIT STATION NO. 31 -
S. 83° 31' 07" W, 394.18 FT.
FROM SE COR. SW 1/4 SEC. 32,
T. 4 N., R. 38 E., W. 1/4 M.
JULY 14, 1976
LATITUDE 45° 46' 26"
DECLINATION 21° 35' 14" N
VERTICAL ANGLE 44° 54' 26"
MEAN DECLINATION 21° E.

TRANSIT STATION NO. 74 -
S. 0° 10' 39" E, 611.13 FT.
FROM NE COR. SEC. 1,
T. 3 N., R. 37 E., W. 1/4 M.
JULY 28, 1976
LATITUDE 45° 45' 59"
DECLINATION 18° 50' 05"
VERTICAL ANGLE 50° 15' 10"
MEAN DECLINATION 19° E.

ENGINEER'S STATEMENT

I, JAMES D. HANLEY, A REGISTERED ENGINEER IN THE STATE OF OREGON, HEREBY CERTIFY THAT THIS PLAT AND THE NOTES HEREON, OR ATTACHED, ARE A CORRECT REPRESENTATION OF A SURVEY PERFORMED BY ME DURING JULY 14 - 29, 1976, FOR THE U.S. FOREST SERVICE, IN ACCORDANCE WITH THE STATUTES OF THE STATE OF OREGON AND WITH THE ARTICLES OF MY CONTRACT.

James D. Hanley
REG. 2808

LEGEND

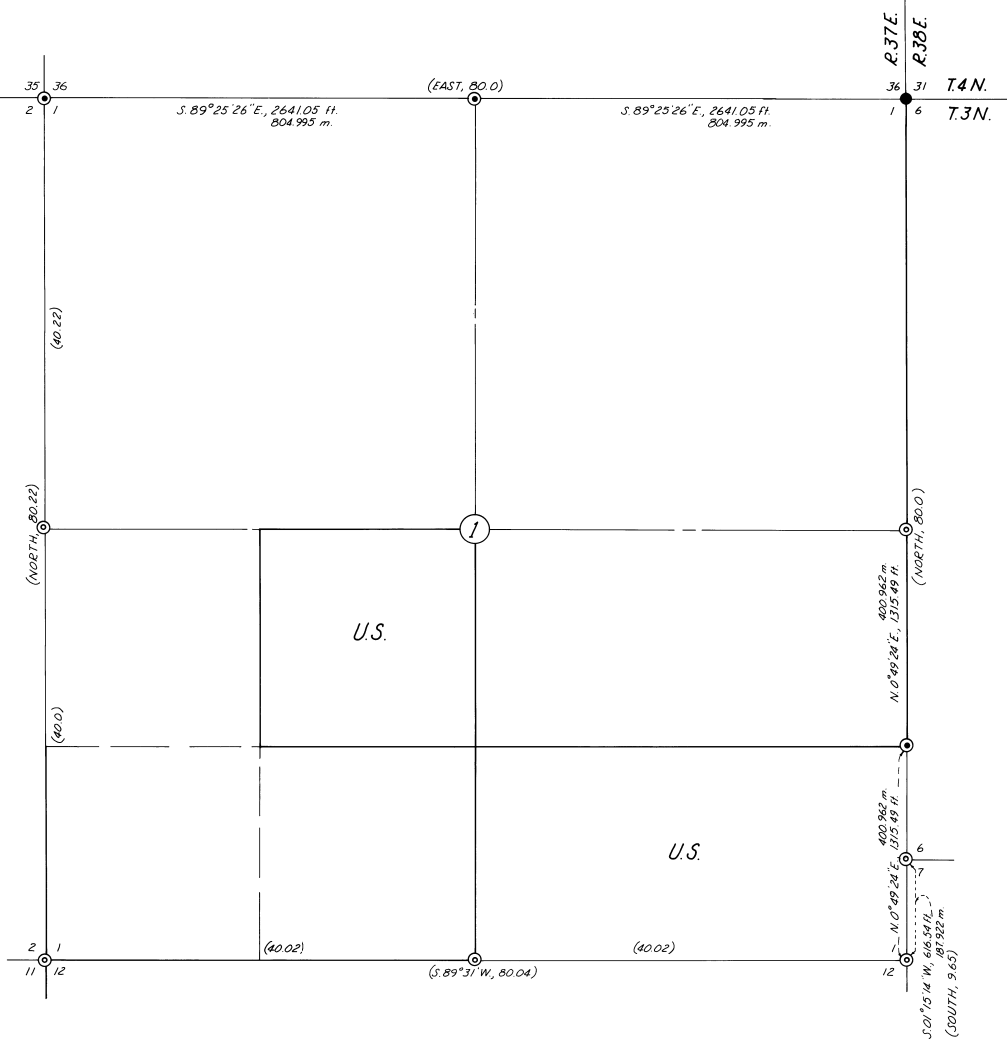
- FOUND BRASS CAP MONUMENT
- ⊙ FOUND ORIGINAL G.L.O. CORNER, SET 2 1/2" BRASS CAP ON 2" x 31" IRON PIPE
- ⊙ SET 2 1/2" BRASS CAP ON 2" x 31" IRON PIPE AT PROPORTIONATE DISTANCE
- () G.L.O. RECORDED BEARING AND DISTANCE

NOTE:

FOR MONUMENTATION RECORDS SEE MONUMENTATION SHEETS FILED SEPARATELY.

DESCRIPTION OF U.S. GOVERNMENT LAND

SECTION 1
S1/2 SEC. 1
NE 1/4 SW 1/4



PLAT OF SURVEY
FOR U.S. FOREST SERVICE
CONTRACT NO. 004971 N

SCALE 1" = 500 FT.
JULY 14 - 29, 1976

