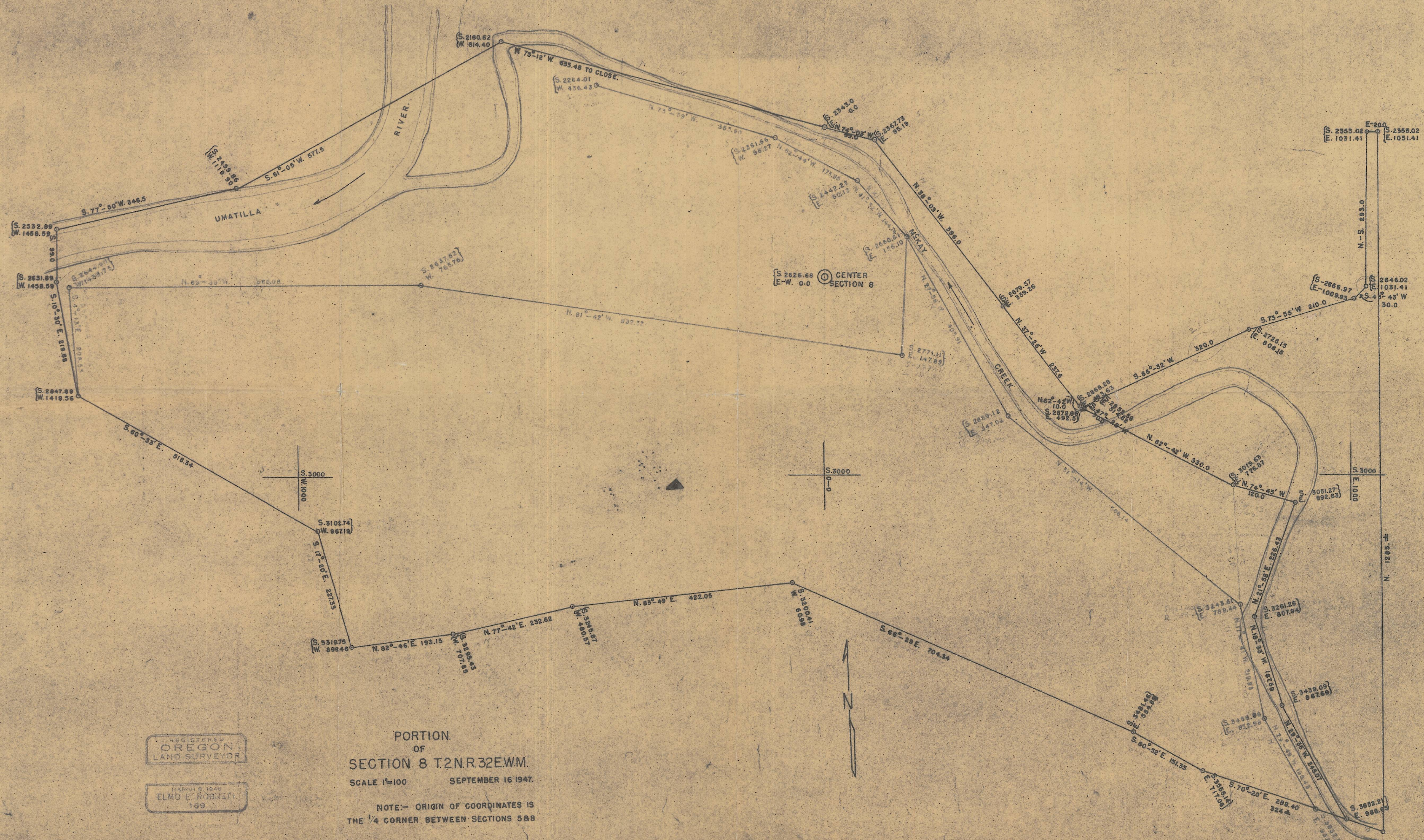
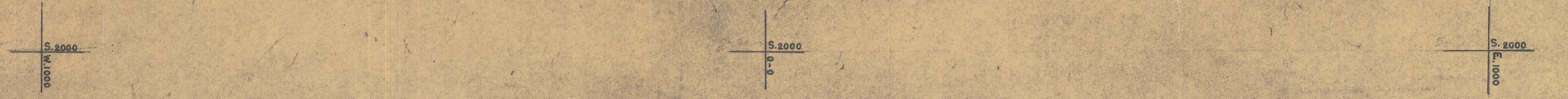


Q-208-B original



REGISTERED  
OREGON  
LAND SURVEYOR

MARCH 6, 1946  
ELMO E. ROBERTI  
199

PORTION  
OF  
SECTION 8 T.2N.R.32E.W.M.  
SCALE 1"=100 SEPTEMBER 16 1947.

NOTE:- ORIGIN OF COORDINATES IS  
THE 1/4 CORNER BETWEEN SECTIONS 5&8

341

Q-208-B 2N 32 8