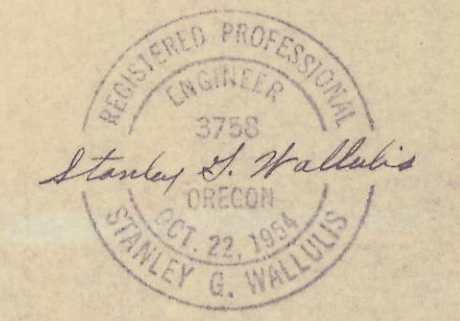
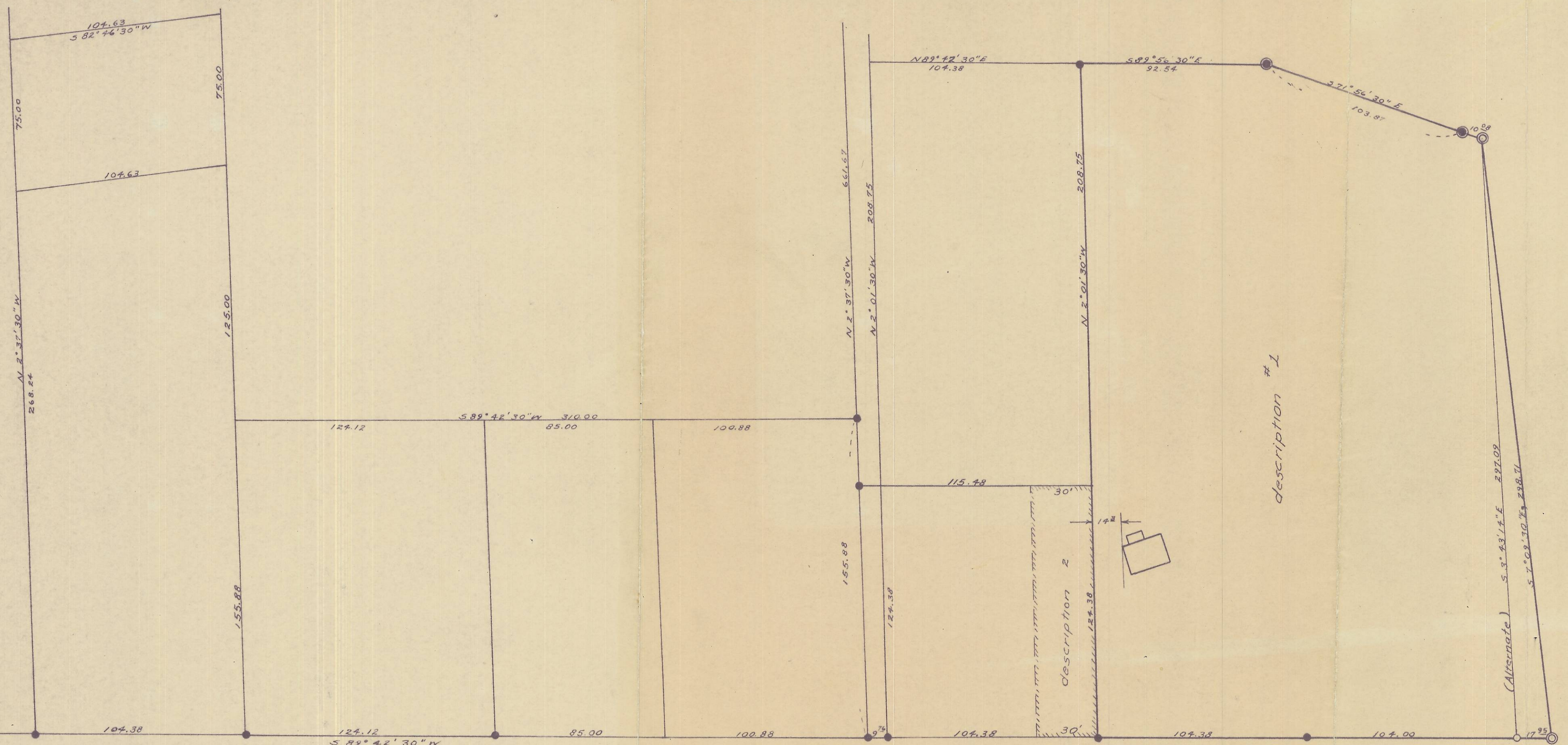


Legend

- Pipes established by "A Plat for L.B. Vaughn Et al" surveyed by "C.H. Storms & Associates" Consulting Engineers, Walla Walla, Washington. Map dated 10-4-49; Scale 1"=100'
- Pipes we set.
- ⊙ Pipes found.
- Concrete monuments with brass plates stating 1) S.W. corner, A.O.Hara, 104' x 417', Original Russel. 2) S.E. corner, A. O'Hara, 104 x 417, Original Russel

S.W. Corner of the SE 1/4 of Section 26 Twn 4 N R 37 E W M Umatilla County, Oregon



Survey for Merle Broxson & Sparks requested by Russel Blackler.

Tp. 4 N R 37 Sec 26

SCALE: 1" = 40' DATE 7-19-56
WALL AND TENNESON
 Engineers
 Pendleton Oregon

Q-751-B 4N R 37 Sec 26

via T 4 N R 37 Sec 26