

Section 18 Boundary

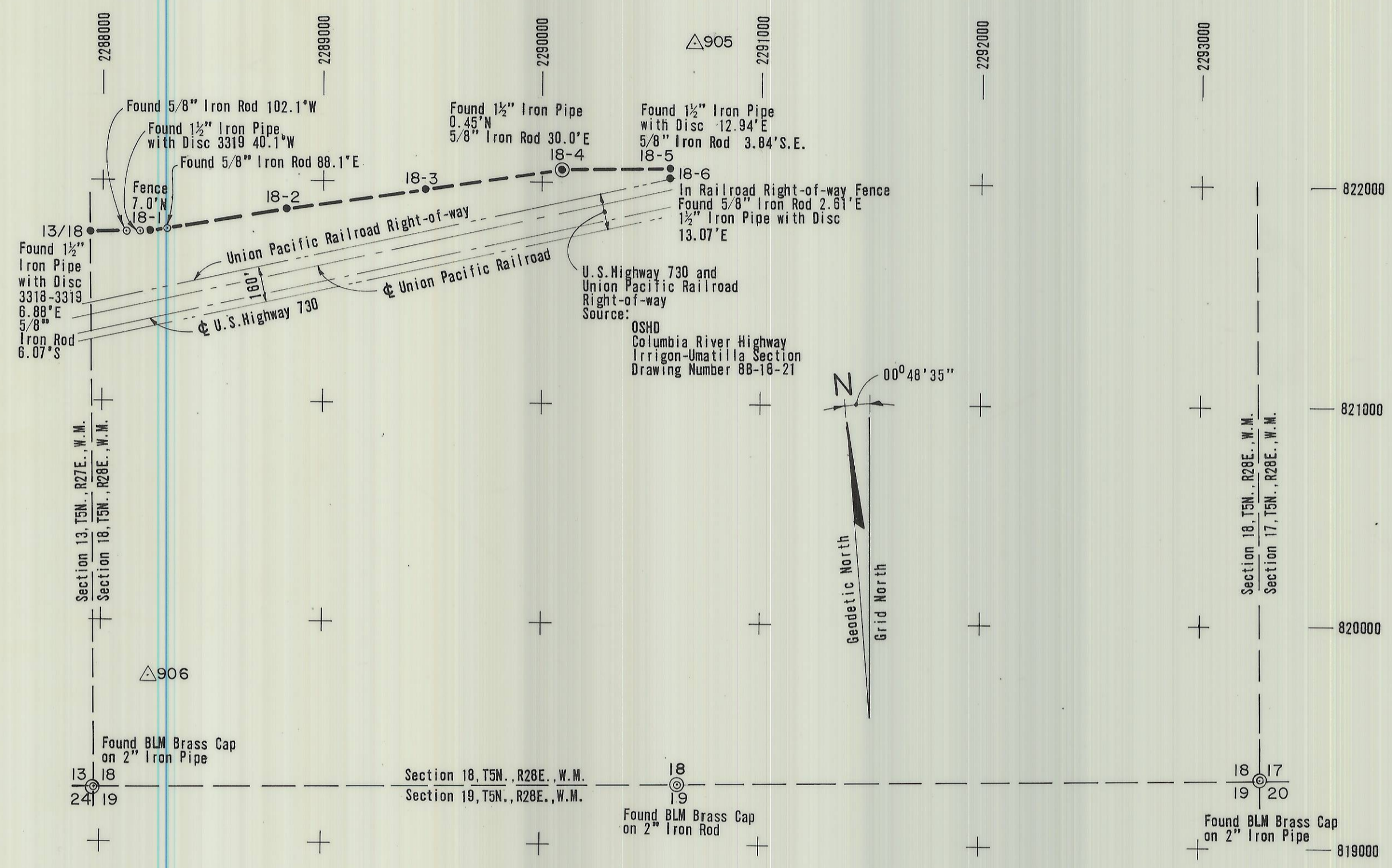
Point on Section Line 13/18	821768.81	2287939.32	S00°48'08" E	2525.89'
S.W. Corner	819243.16	2287974.69	N89°15'45" E	2649.07'
S. 1/4 Corner	819277.26	2290623.54	N89°14'48" E	2656.67'
S.E. Corner	819312.19	2293279.98		

Project Boundary

13/18	821768.81	2287939.32	N87°30'00" E	270.15'
18-1	821780.59	2288209.22	N81°35'00" E	633.30'
18-2	821873.29	2288835.69	N81°35'00" E	633.31'
18-3	821965.99	2289462.18	N81°35'00" E	633.31'
18-4	822058.68	2290088.67	N89°02'00" E	495.51'
18-5	822067.04	2290584.11	S00°48'35" E	44.70'
18-6	822022.34	2290584.74		

Horizontal Control Monument

905	822634.24	2290687.04
906	819753.69	2288241.98



- LEGEND:**
- Set 4-inch cast aluminum monument, stamped Corps of Engineers-U.S. Army Project Boundary, Survey Mark.
 - ⊙ Held Found Monument Position as Indicated.
 - △ Horizontal Control Monument

NOTE:
East and West Section Line Bearings are True North.

SCALE: 1" = 500'
COORDINATES ARE OREGON, NORTH ZONE
BEARINGS SHOWN ARE ORIENTED TO GRID.
GRID FACTOR 0.9999584

JOHN DAY PROJECT BOUNDARY
UMATILLA AREA
By CH2M HILL INC.
For The CORPS OF ENGINEERS
SECTION 18, T5N., R28E., W.M.
UMATILLA COUNTY OREGON
Surveyed March 1979 Sheet 1 of 1

REGISTERED
PROFESSIONAL
LAND SURVEYOR

Kenneth R. Wengler

OREGON
JULY 13, 1973
KENNETH R. WENGLER
1002

RECEIVED BY
Umatilla County Surveyor
Date 4-10-79
Rec'd By S. Barth
No. Q-960-B