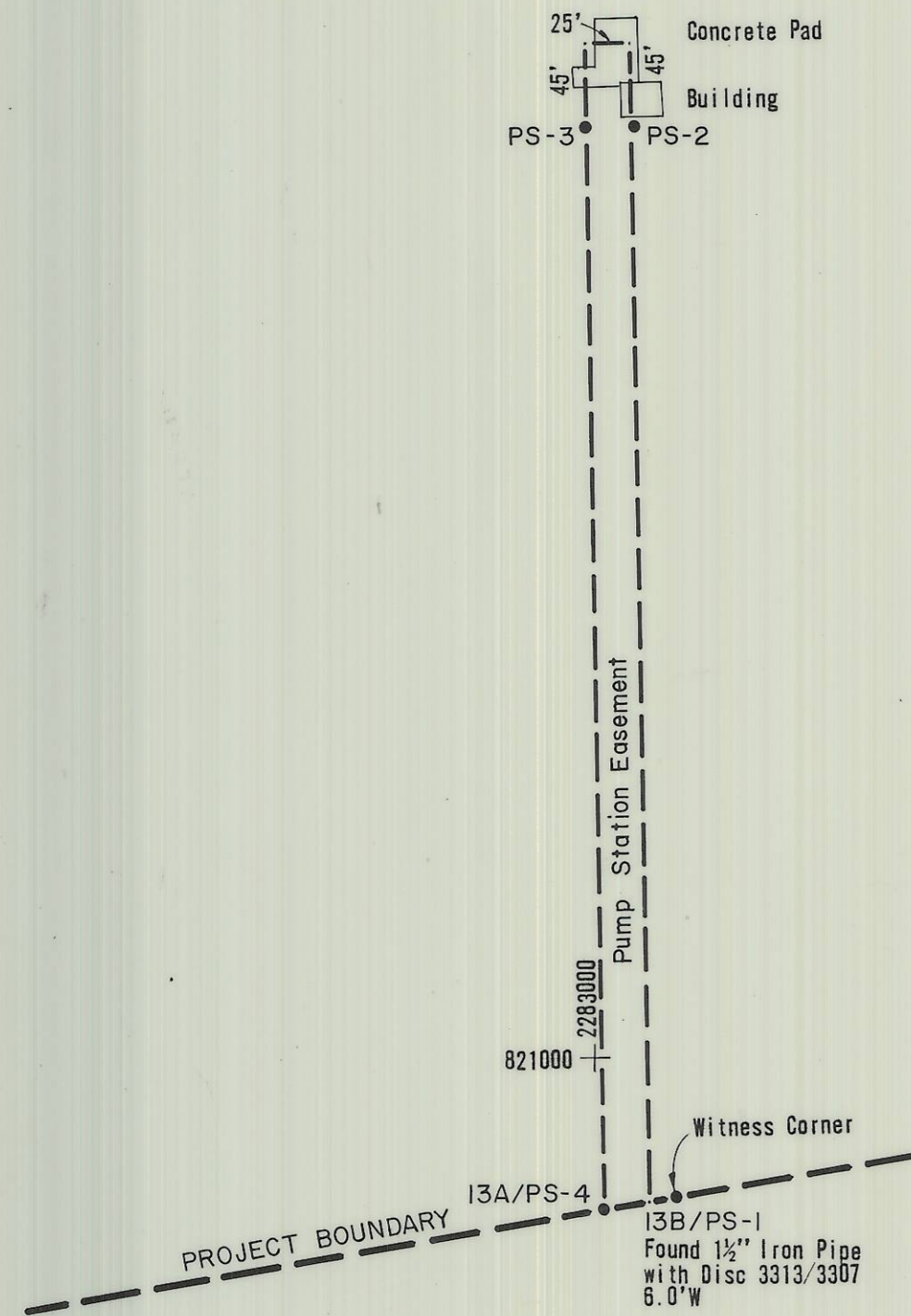


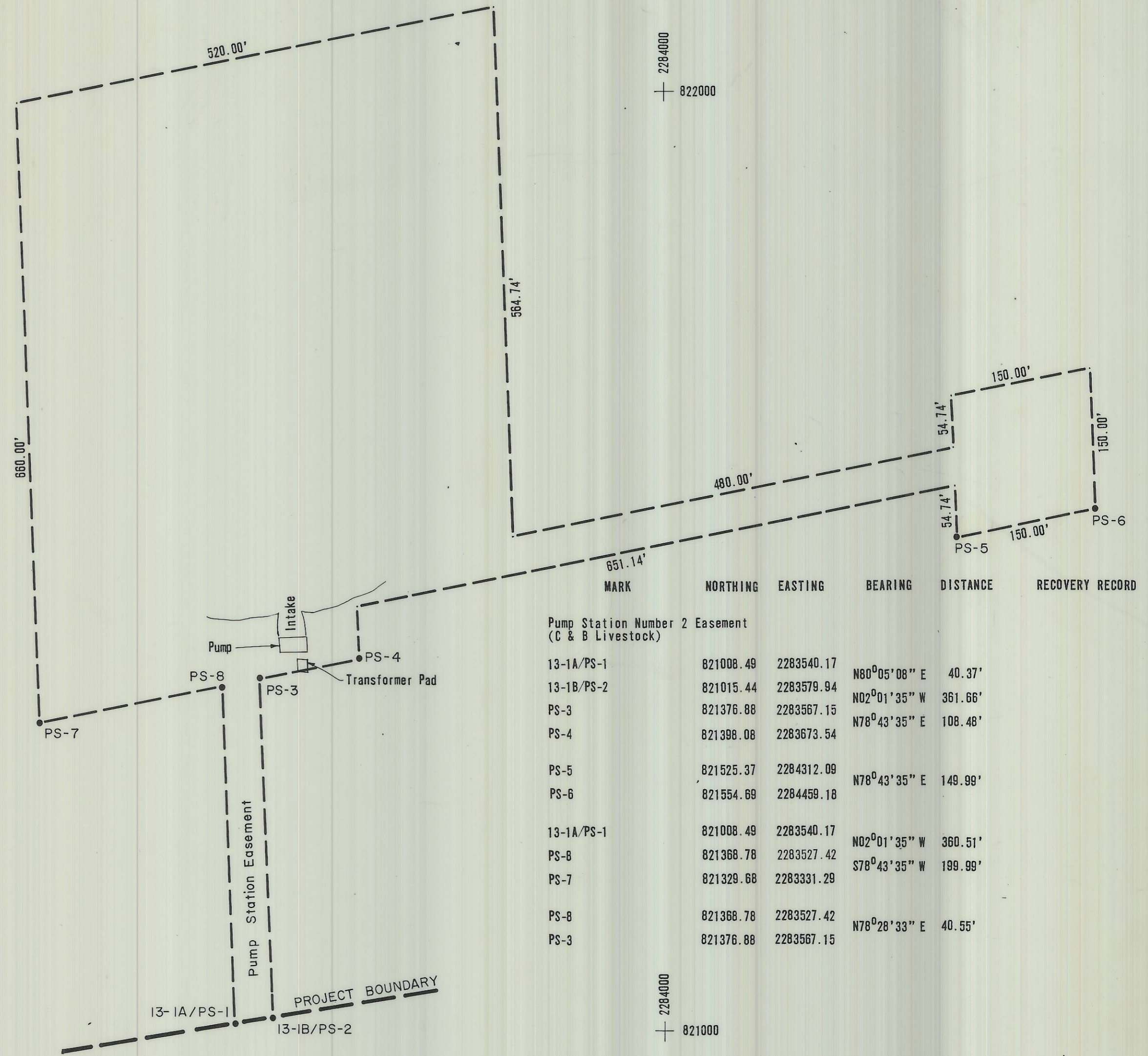
MARK	NORTHING	EASTING	BEARING	DISTANCE	RECOVERY RECORD
Pump Station Number 1 Easement (Oregon Potato Inc.)					
13B/PS-1	820920.14	2283034.84	N00°47'15" W	605.00'	
PS-2	821525.09	2283026.52	S89°12'45" W	25.00'	
PS-3	821524.74	2283001.52	S00°47'15" E	609.02'	
13A/PS-4	820915.78	2283009.90	N80°05'00" E	25.32'	
13B/PS-1	820920.14	2283034.84	N80°05'00" E	15.00'	
Witness Corner	820922.73	2283049.61			



PUMP STATION NUMBER 1 EASEMENT
(Oregon Potato Inc.) DAC W68-2-68-107
SCALE: 1" = 100'

LEGEND:

- Set 4-inch cast aluminum monument stamped Corps of Engineers-U.S. Army Project Boundary, Survey Mark.



MARK	NORTHING	EASTING	BEARING	DISTANCE	RECOVERY RECORD
Pump Station Number 2 Easement (C & B Livestock)					
13-1A/PS-1	821008.49	2283540.17	N80°05'08" E	40.37'	
13-1B/PS-2	821015.44	2283579.94	N02°01'35" W	361.66'	
PS-3	821376.88	2283567.15	N78°43'35" E	108.48'	
PS-4	821396.08	2283673.54			
PS-5	821525.37	2284312.09	N78°43'35" E	149.99'	
PS-6	821554.69	2284459.18			
13-1A/PS-1	821008.49	2283540.17	N02°01'35" W	360.51'	
PS-8	821366.78	2283527.42	S78°43'35" W	199.99'	
PS-7	821329.68	2283331.29			
PS-8	821366.78	2283527.42	N78°28'33" E	40.55'	
PS-3	821376.88	2283567.15			

PUMP STATION NUMBER 2 EASEMENT
(C & B Livestock)
SCALE: 1" = 100'

JOHN DAY PROJECT BOUNDARY AND PUMP SITES
UMATILLA AREA
By CH2M HILL INC.
For The CORPS OF ENGINEERS
SECTION 13, T5N., R27E., W.M.
UMATILLA COUNTY OREGON
Surveyed March 1979 Sheet 2 of 2

REGISTERED
PROFESSIONAL
LAND SURVEYOR

Kenneth R. Wengler

OREGON
JULY 13, 1973
KENNETH R. WENGLER
1002

RECEIVED BY
Umatilla County Surveyor
Date 4-10-79
Rec'd By S.L.B.
No. 3-96-B