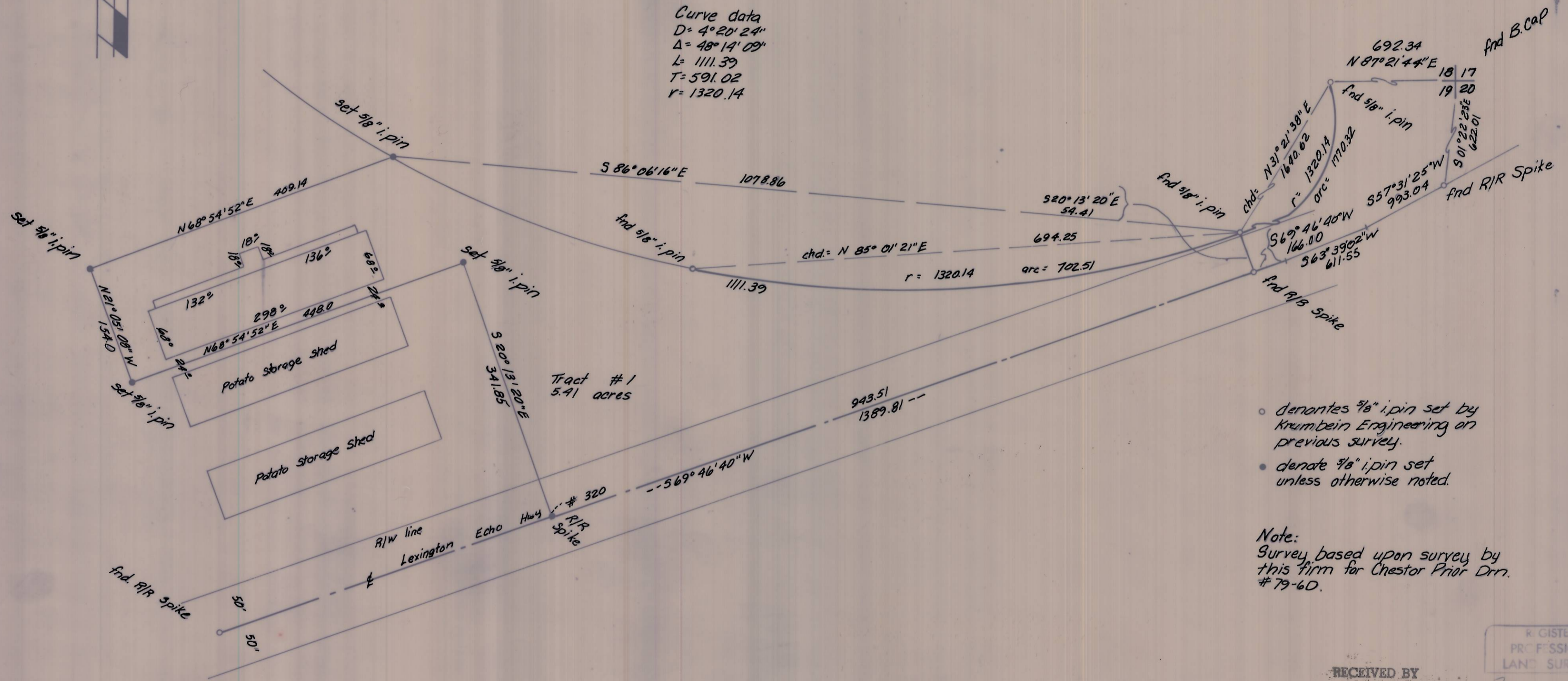




Curve data
 D = 4° 20' 24"
 Δ = 48° 14' 09"
 L = 1111.39
 T = 591.02
 r = 1320.14



- denotes 3/8" i.pin set by Krumbain Engineering on previous survey.
- denote 3/8" i.pin set unless otherwise noted.

Note:
 Survey based upon survey by this firm for Chester Prior Drrr. # 79-6D.

RECEIVED BY
 Umatilla County Surveyor
 Date 7-10-79
 Rec'd By mjt
 No. G-1213-B

REGISTERED
 PROFESSIONAL
 LAND SURVEYOR
 Terry E. Hawley
 JULY 14, 1973
 TERRY E. HAWLEY
 1638

KRUMBEIN ENGINEERING CO. ENGINEERS - SURVEYORS - PLANNERS 221 S. Main, Pendleton, Oregon	SCALE 1" = 100'
	DATE 6-29-79
DRN. BY M.L.J.	
CKD. BY J.L.C.	
DRNG. NO. 79-45C	

Survey for
EAGLE RANCH
 Chester Prior
 Parcel in Sec. 19, T3N, R29E W.M. Echo