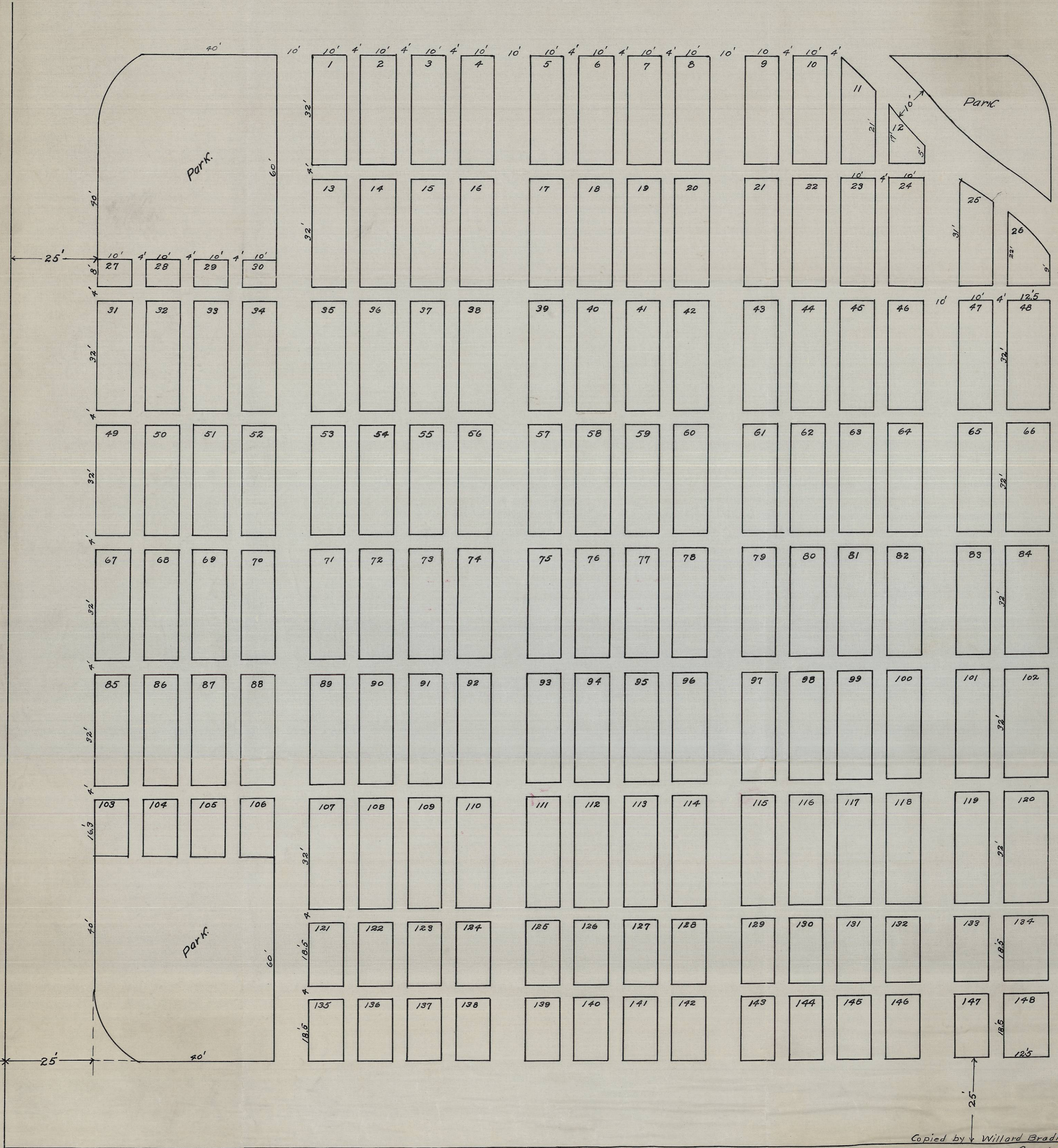


# PLEASANT VIEW CEMETERY OF STANFIELD.

Flowers.



PLEASANT VIEW CEMETERY

684.0 To Cor.  
Secs. 28-29-32-33  
T. 4N. R. 20E. W. 1

Section line between sections 28+29

Copied by Willard Bradley 1-12-1916.  
County Surveyor.