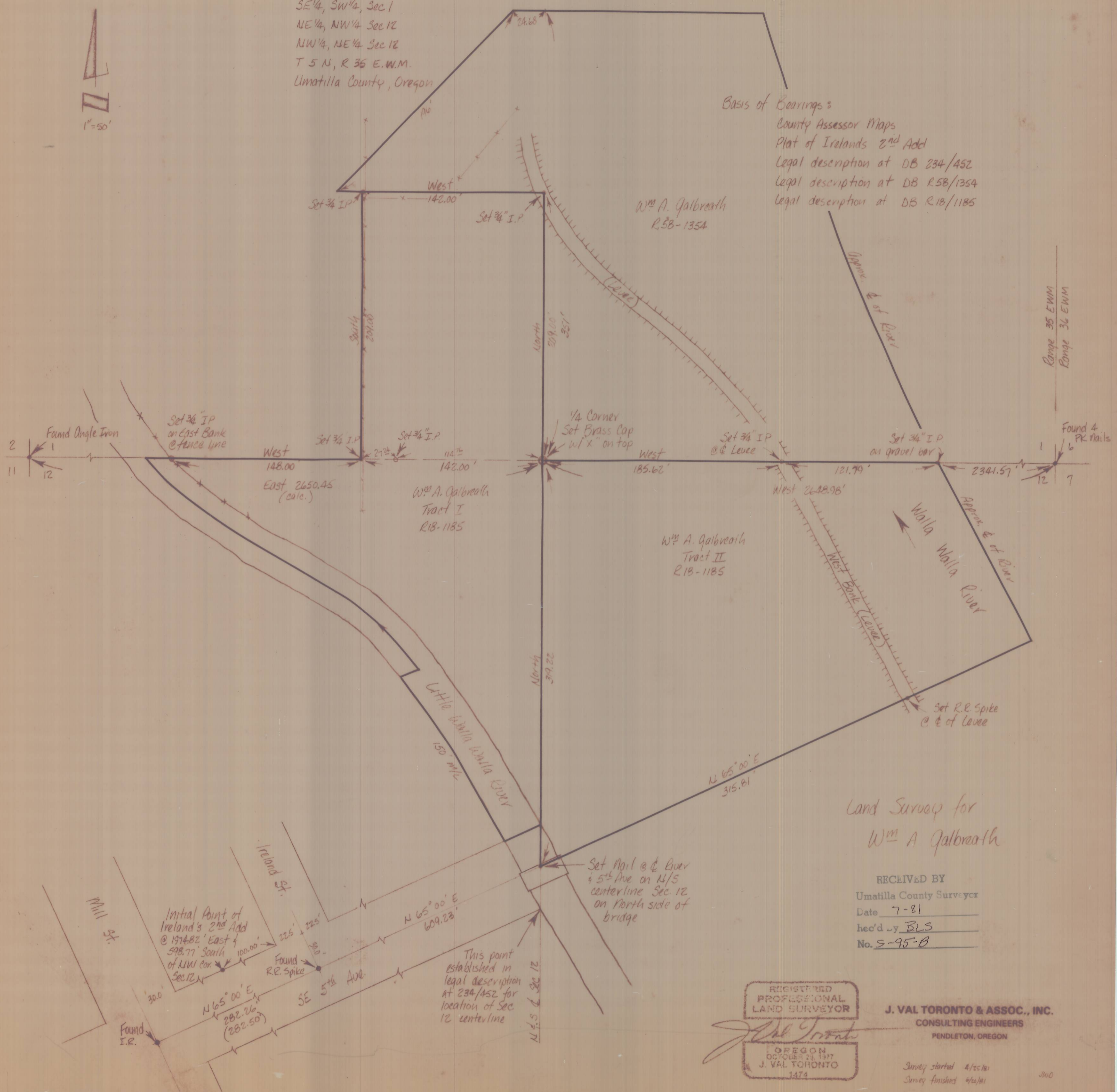




SE 1/4, SW 1/4, Sec 1  
 NE 1/4, NW 1/4 Sec 12  
 NW 1/4, NE 1/4 Sec 12  
 T 5 N, R 35 E.W.M.  
 Umatilla County, Oregon

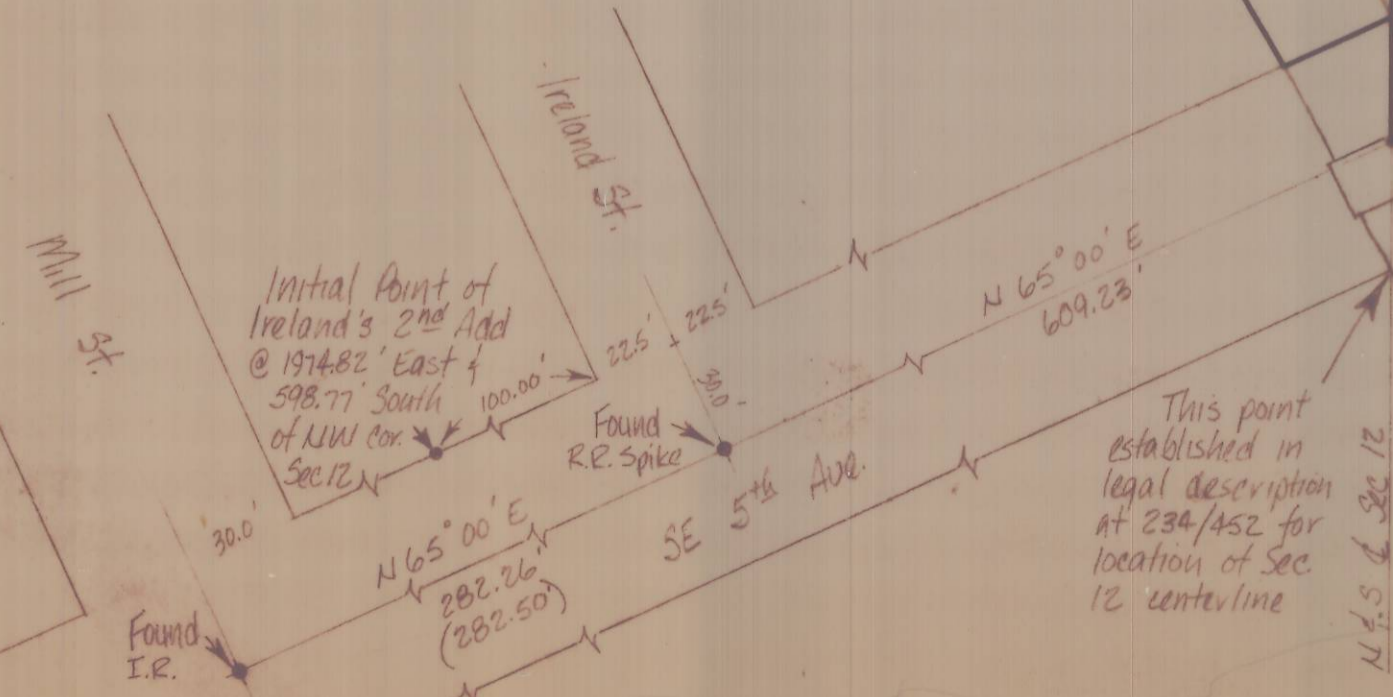
Basis of Bearings:

County Assessor Maps  
 Plat of Ireland's 2<sup>nd</sup> Add  
 Legal description at DB 234/452  
 Legal description at DB R.58/1354  
 Legal description at DB R.18/1185



Land Survey for  
 Wm A Galbreath

RECEIVED BY  
 Umatilla County Surveyor  
 Date 7-81  
 rec'd by BLS  
 No. S-95-B



REGISTERED  
 PROFESSIONAL  
 LAND SURVEYOR

*J. Val Toronto*

OREGON  
 OCTOBER 23, 1917  
 J. VAL TORONTO  
 1474

J. VAL TORONTO & ASSOC., INC.  
 CONSULTING ENGINEERS  
 PENDLETON, OREGON

Survey started 4/25/81  
 Survey finished 4/20/81

JMO



GALBREATH SURVEY  
NARRATIVE

Found iron angle bar at intersection of DeHaven & SW 2nd Streets, taken to be NW corner of Section 12. Found R.R. Spike at intersection of SW 2nd & S Main Streets, taken to be on North line of Section 12. Found PK nail on Highway 11, taken to be W 1/16 corner on North line Section 12. Found 4 PK nails all together on Cemetary road, taken to be references for NE corner Section 12. Established North line of Section 12 by wiggling in with foresight to NW corner & backsight to NE corner of Section 12 at point situated on East bluff of Walla Walla River. Set 3/4" Iron Pipe on North line Section 12 in center of West bank levee of Walla Walla River. Chained 2463.36 feet from NE Corner Section 12 to 3/4" Iron pipe set on Levee.

Found Iron rod at intersection Mill & SE 5th Streets. Found RR Spike at intersection Ireland & 5th Streets. Legal description at Deed Book 234 page 452 establishes location of NW centerline of Section 12. Calculated distance from Iron Rod at Mill & 5th up 5th Street at N 65°00'E on centerline of 5th at 891.49 feet to NW centerline and set nail on bridge, from nail on bridge on NW centerline ran North 319.22 feet to North line Section 12 and set brass cap.

From 3/4" Iron pipe on West bank levee, ran West along North line Section 12 185.62 feet to Brass cap set previously thus establishing 1/4 corner. Scribed "X" on top of Brass cap.

Set 3/4" I.P. 209.00' North of 1/4 corner, set 3/4" I.P. 142.00' West of 1/4 corner and set 3/4" I.P. 290.00' west of 1/4 corner on East Bnk of Little Walla Walla River. Concludes survey as agreed to by owner.

S-95-B